



— THE EASTERN
TRANSPORTATION
COALITION

CONNECTING FOR SOLUTIONS



TETC Truck Parking Working Group

February 2, 2024

Today's Agenda



TETC Truck Parking Working Group

Co-Chair Introductions, Opening remarks

Sara Walfoort – SWPC Manager, Freight Planning, TPWG Co-Chair
Erik Johnson, Freight Planning Specialist, Virginia DOT, TPWG Co-Chair

Introduction of Spotlight Presentation Speaker
Spotlight Presentation – Tennessee DOT Truck Parking

Erik Johnson, TPWG Co-Chair
Dan Pallme, Assistant Chief of Freight and Logistics, Tennessee DOT

Agency Roundtable

TPWG Co-chairs, TPWG members

TETC Update

Marygrace Parker

TETC TPWG Future Topics
Calendar – Meeting Schedule

Erik Johnson, Marygrace Parker

Wrap Up/Closing Remarks

TPWG Co-Chairs, TPWG Members





Spotlight Presentation: Tennessee DOT Truck Parking



Truck Parking –Tennessee TDOT

Dan Pallme
Freight & Logistics Division: Tennessee DOT

February 2, 2024

History – 3 Research Projects

- **2016 – Federal pilot**



History – 2nd Research Project

- **RES 2016 – June 2017**
 - **Ramp Truck Parking**
 - Private parking facilities also often do not have adequate parking capacity. Truck drivers are struggling to find safe parking facilities to rest and meet the federal hours-of-service (HOS) requirements. Lack of available parking or other behavioral barriers often manifests with trucks illegally parking on interstate on- and offramp shoulders. Without adequate information about available parking, many drivers are also forced to exceed HOS regulations to find appropriate parking.

History – 3rd Research Project

- **RES 2019 – Nov. 2020**
 - **Truck Parking Needs in Tennessee**
 - Whether needed for staging, pick-ups & deliveries or hours-of-service compliance, truck parking is a critical component of supply chain operations. However, there is a huge gap between the demand and supply of truck parking facilities in many states. The purpose of this project is to provide TDOT with guidance on truck parking issues and opportunities, by identifying parking needs (i.e., addition of capacity and/or construction of new facilities); developing truck parking violation rates (i.e., truck parking on on- and off- ramps) and developing/applying a methodology to identify candidate locations for new truck parking facilities in the State of TN.

History – 3rd Research Project

ID	Location	Current Capacity	Median Util. (2035)	Area	Amenities	Private parking in proximity with available capacity
3	RA EB I-40 MM73	10	123%	Positive	Yes	No
4	RA WB I-40 MM73	10	123%	Positive	Yes	
7	RA EB I-40 MM130	10	82%	Positive	Yes	No
8	RA WB I-40 MM130	10	82%	Positive	Yes	
9	RA EB I-40 MM170	13	95%	Positive	Yes	No
10	RA WB I-40 MM170	13	95%	Positive	Yes	
11	WC EB I-24 MM 0.5	23	71%	Positive	Yes	No
12	WC WB I-24 MM 0.5	31	106%	Positive	Yes	
16	WC SB I-65 MM121	15	109%	Neutral	Yes	ID: 24, Capacity: 20, MU: 21%
17	WC NB I-65 MM121	21	98%	Neutral	Yes	
25	WC WB I-24 MM160	12	102%	Neutral	Yes	No
26	WC EB I-24 MM172	16	77%	Neutral	Yes	No
41	RA WB I-40 MM426	19	108%	Negative	Yes	No
46	WC WB I-40 MM267	15	82%	Positive	Yes	No
47	WC EB I-40 MM267	15	82%	Positive	Yes	No

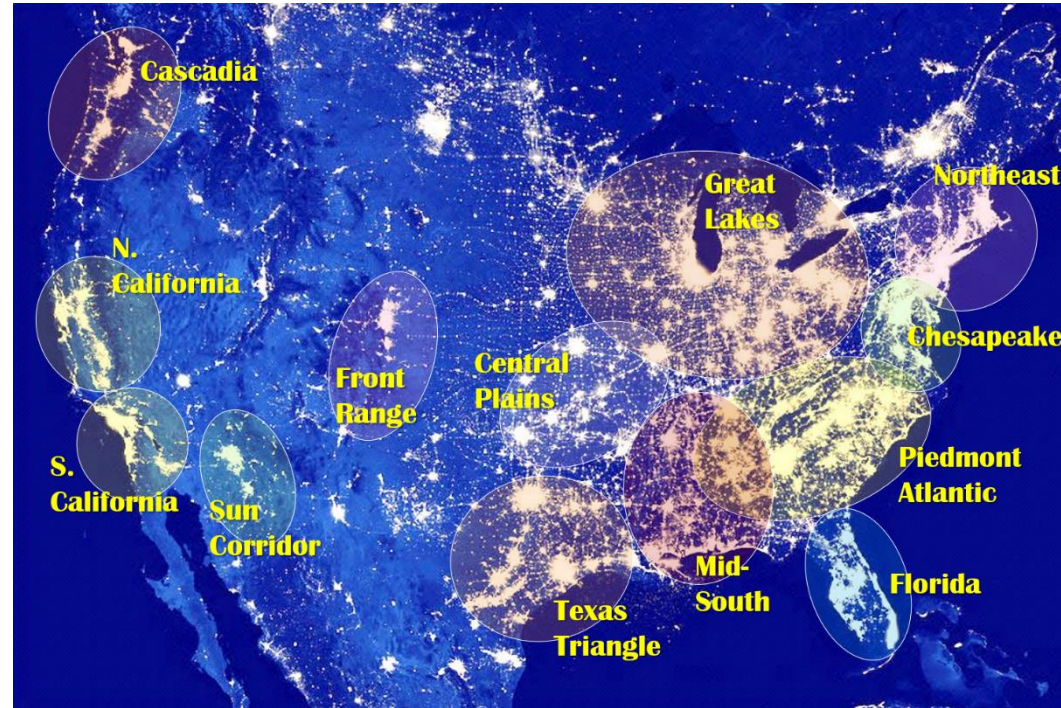
Notable other related truck parking ideas

- **National Economic Partnership project**
- **University of Memphis – 2021 NOCoE
Transportation Technology Tournament**
- **Conversations with travel center operators**

Future Freight Movement along Freight Alley

**Project Purpose –
Need: Why did we
do this?**

- **Go Beyond Boundaries and Discover Regional Advantages**
- **Collaborative Economic Development through Industry Clustering Analysis**



Automotive
Manufacturing



Aerospace
and Aviation
Manufacturing



Agri-Production
and Food
Products

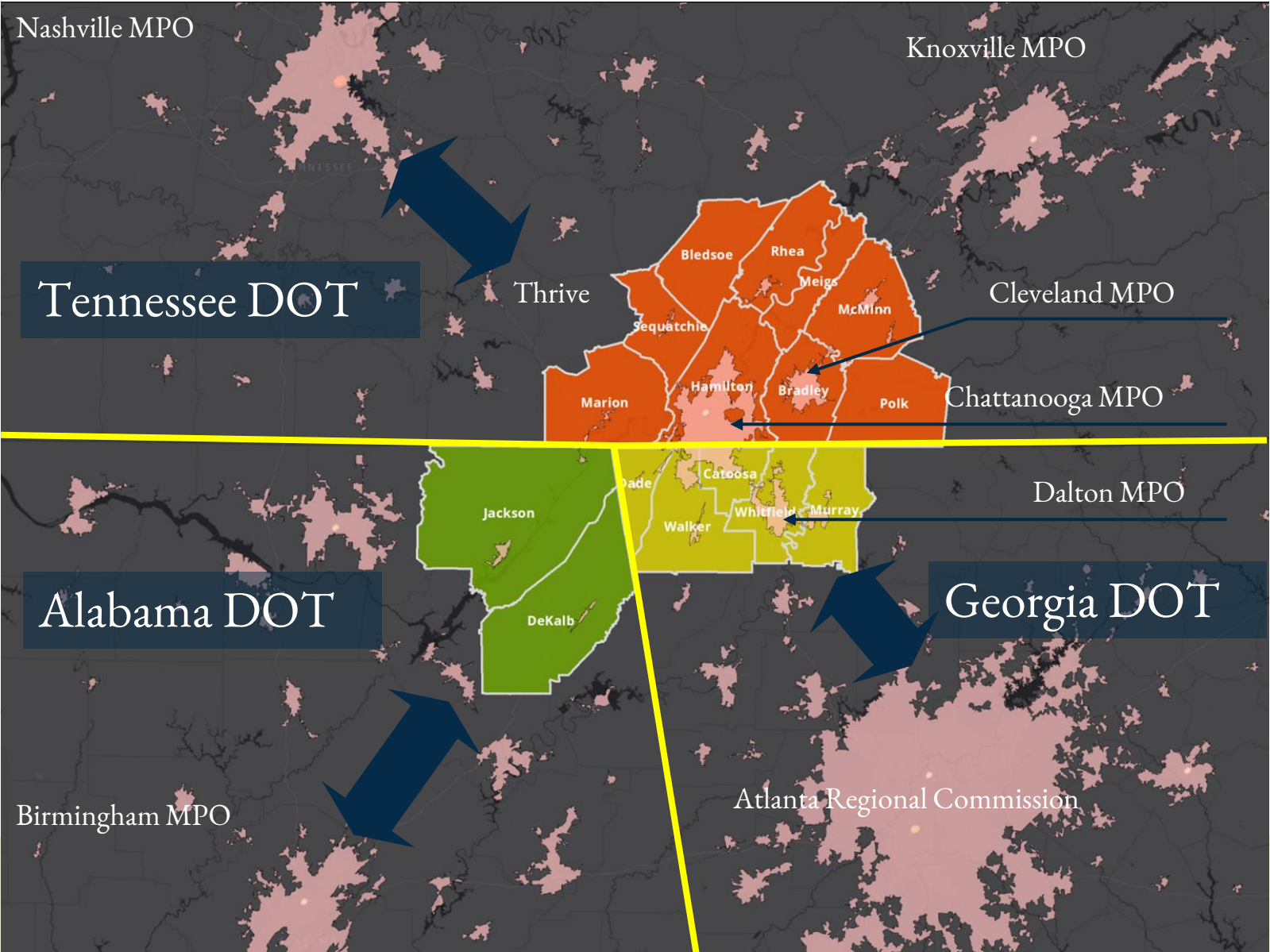


Wood Flooring
and Forest
Products



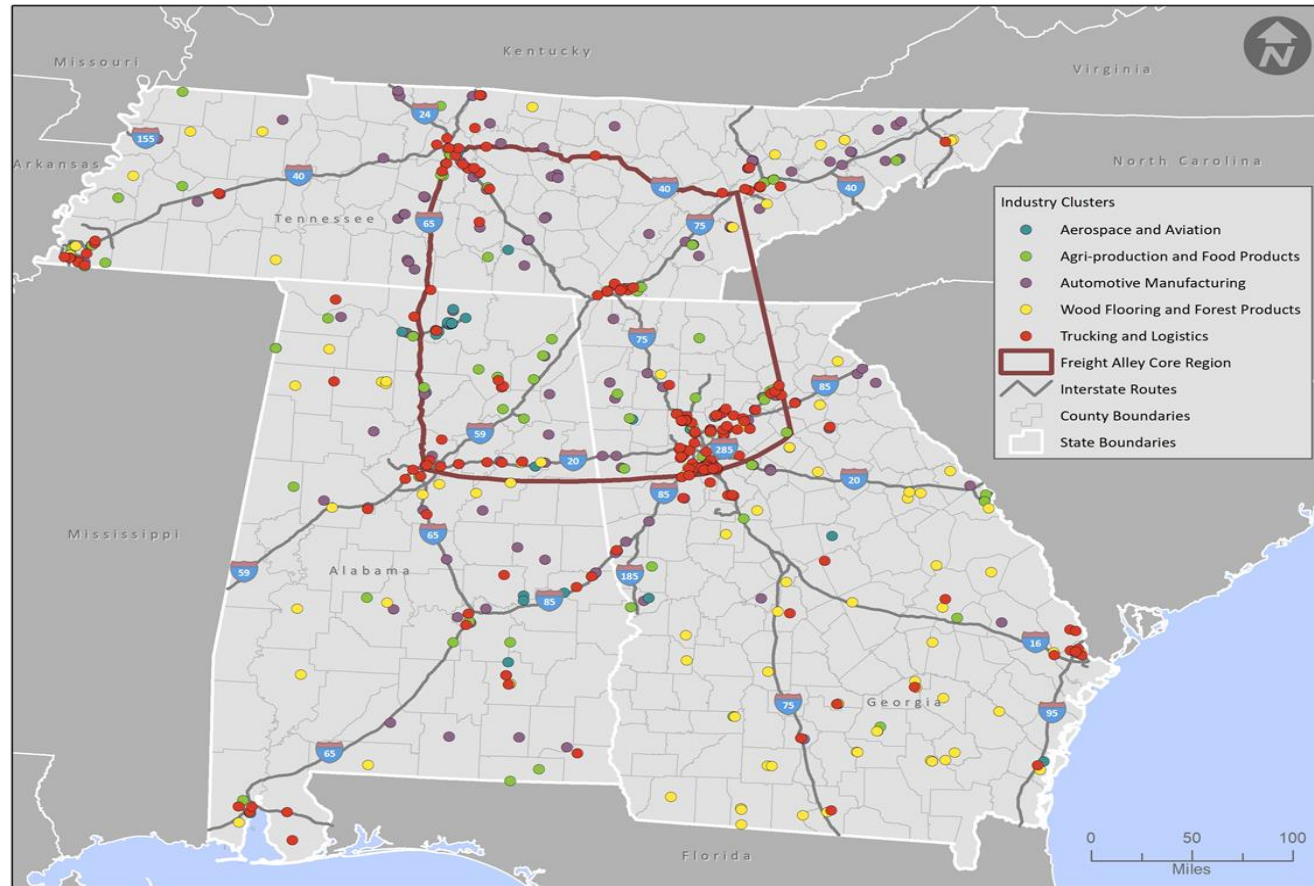
Trucking and
Logistics

NEP – THRIVE Region



NEP -Project Outcomes/Benefits:

- Megaregional Jurisdictional Planning for Industry Clusters
- Where Truck Parking and Amenities are Needed
- Duplication of Study in Other Megaregions



<https://www.tn.gov/content/dam/tn/tdot/freight-and-logistics/Consolidated%20NEP%20Final%20Report%20with%20Appendices.pdf>

NEP-Future Freight Movement along Freight Alley

Collaboration with Private and Public Sector

Truck Parking Coordination in Multi-State Area

# Parking spots – Public and private	Alternative Fuel Locations
Restrooms	Food service
Vending machines	Showers
Weigh stations	Security

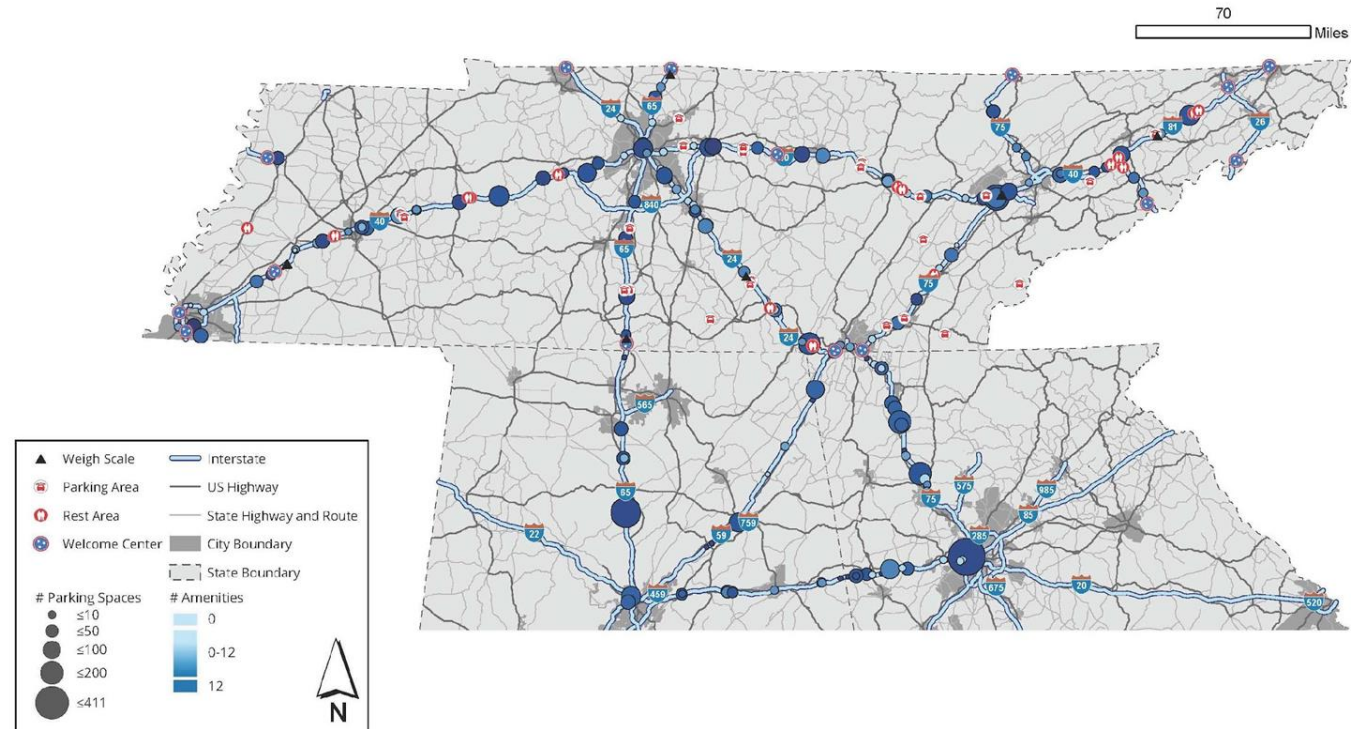
NEP -Truck Parking Locator Map

- # Parking spots – public and private
- Alternative Fuel Locations
- Restrooms
- Food service
- Vending machines
- Showers
- Weigh stations
- Next Steps

Parking locations are represented by a dot and the amount of parking spaces are depicted by the size of the dot. Location amenities are shown by shades of blue, a darker shade means a higher number of amenities.

Tennessee Truck Parking

Including major corridors in Georgia and Alabama



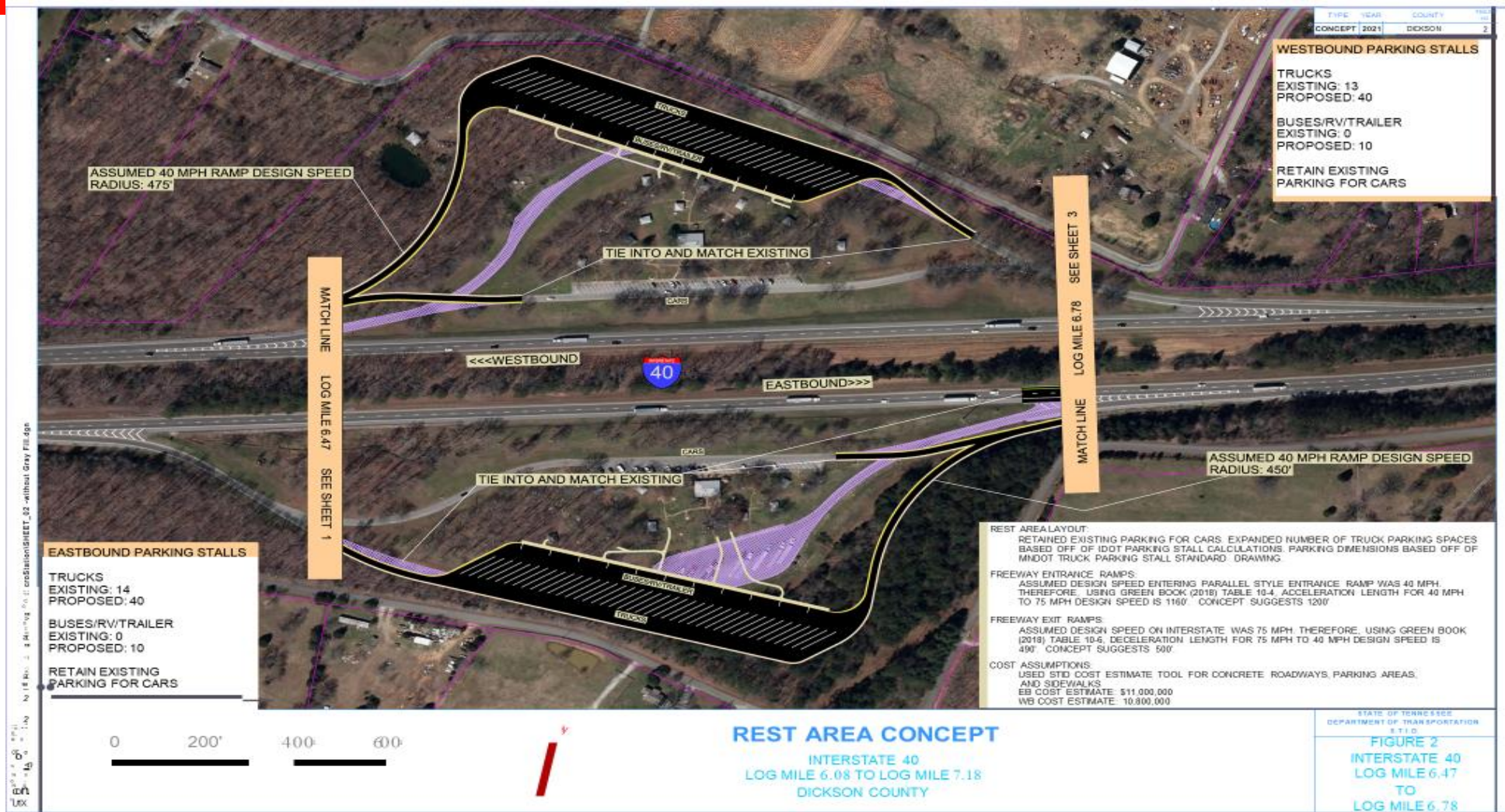
U of M Master's Class Project – I40 MM73WB



U of M Master's Class Project – I40 MM73 EB



Expansion –current rest



Latest Truck Parking Project

- Started October 2023
- 60 plus sites
 - Enlarge current truck parking sites
 - Former weigh scales
 - State owned property
- Status – current environmental phase high level on 20 sites
- ROI analysis
- Funding is last issue to solve the problem
- June 2024 completion date

Future Truck Parking Opportunities

- IIJA or BIL
 - More emphasis on FHWA grants for leveraging \$\$\$
 - WIN - Smith County Truck Parking Rest Area – MPDG award. \$53 million project
- Weigh in Motion – Full scale operation. Let - next month
- ROI project / Case Studies – Ongoing – December 2023

Next Steps in Tennessee (cont.)

- **Re-work former weigh scale stations**
- **Work internally on expansion of current rest areas.**
 - **Diagonal spaces**
 - **Unattended truck parking locations**
- **Continued dialogue with travel center operators**
- **Truck parking notification system**

Future Steps to Consider

- **Federal Grants for truck parking (story)**
 - **INFRA example**
- **Appalachian potential – truck parking**
- **Multi-state collaboration (ETC)**
- **Leverage, Leverage and more leverage**
- **Technology enhancements**
- **Future Data Analysis**

Contact Information

- Dan Pallme
- Asst Bureau Chief, Freight & Logistics
- Daniel.Pallme@tn.gov



— THE EASTERN
TRANSPORTATION
COALITION

CONNECTING FOR SOLUTIONS



THANK YOU!

For program questions contact Marygrace Parker,
Director – Freight
mgparker@tetcoalition.org

Connecting for Solutions
TETCoalition.org