



— THE EASTERN
TRANSPORTATION
COALITION



Truck Parking Working Group

June 17, 2022



Today's Agenda

- Spotlight Presentation: Kentucky Transportation Cabinet: Truck Parking Initiatives
 - Jeremy Edgeworth; Freight, Rail and Waterways Coordinator
- Coalition Update
 - TETC Truck Parking Resource Matrix
- Agency Roundtable
- Future TETC/TPWG Meetings



THE EASTERN
TRANSPORTATION
COALITION



Spotlight Presentation: Kentucky Transportation Cabinet, Truck Parking Initiatives

Jeremy Edgeworth
Freight, Rail and Waterways Coordinator
KYTC

Taking Action on Truck Parking

Kentucky's Truck Parking Assessment and Action Plan

Jeremy Edgeworth, Kentucky Transportation Cabinet

KENTUCKY TRUCK
PARKING STUDY



Purpose, Need, Vision

- What's the problem?



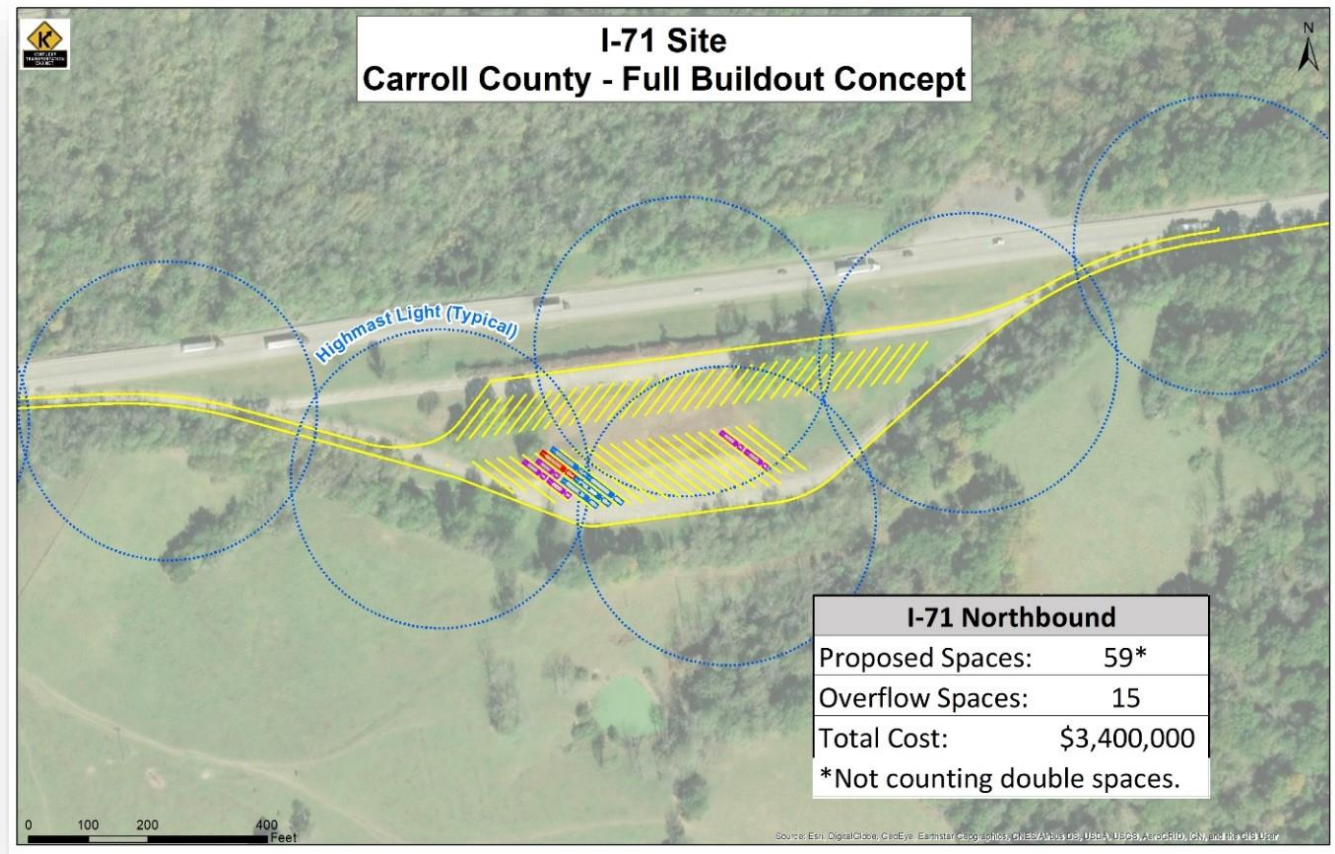
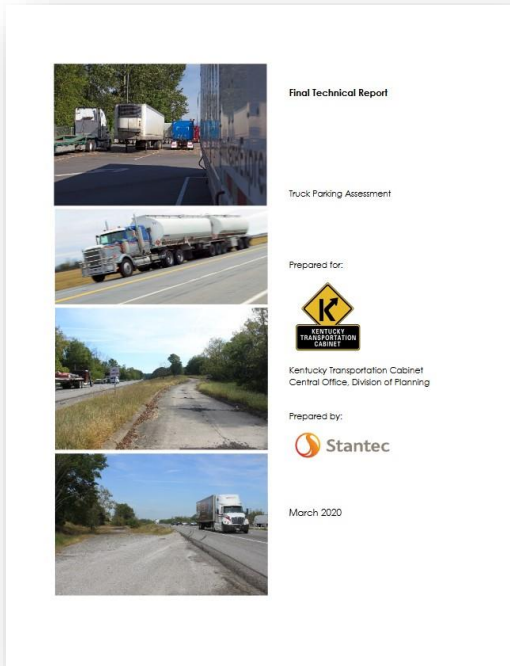
Purpose, Need, Vision

- Just build more parking?



Purpose, Need, Vision

- 2019 Truck Parking Quick Look Study



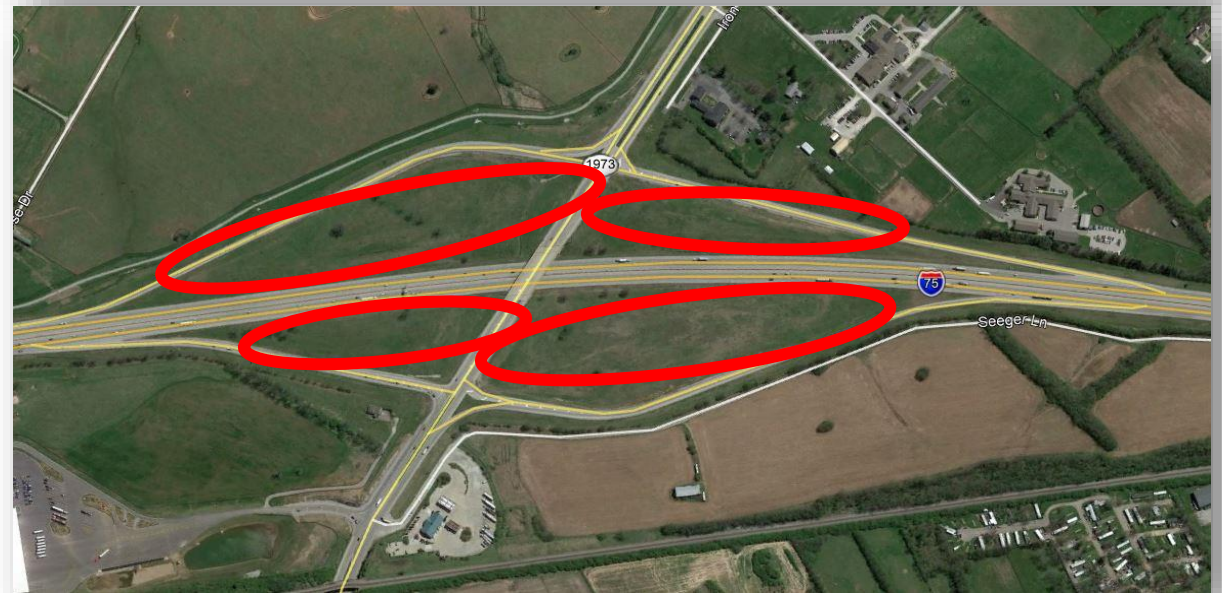
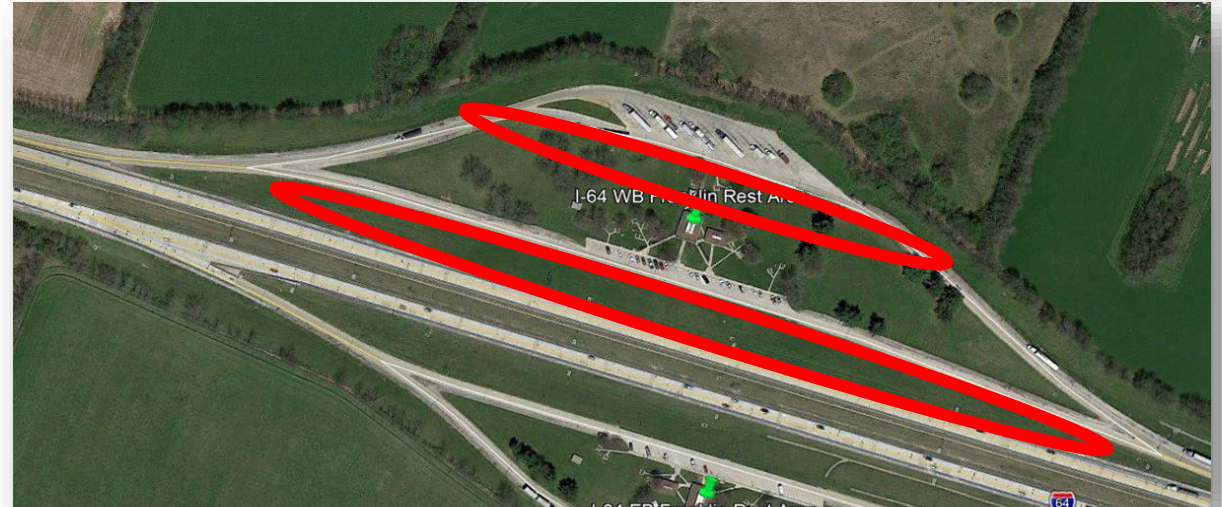
Purpose, Need, Vision

- Where are they parking?



Purpose, Need, Vision

- What are our options?



Purpose, Need, Vision

- Truck Parking IMS/Apps



Purpose, Need, Vision

- Take Action!



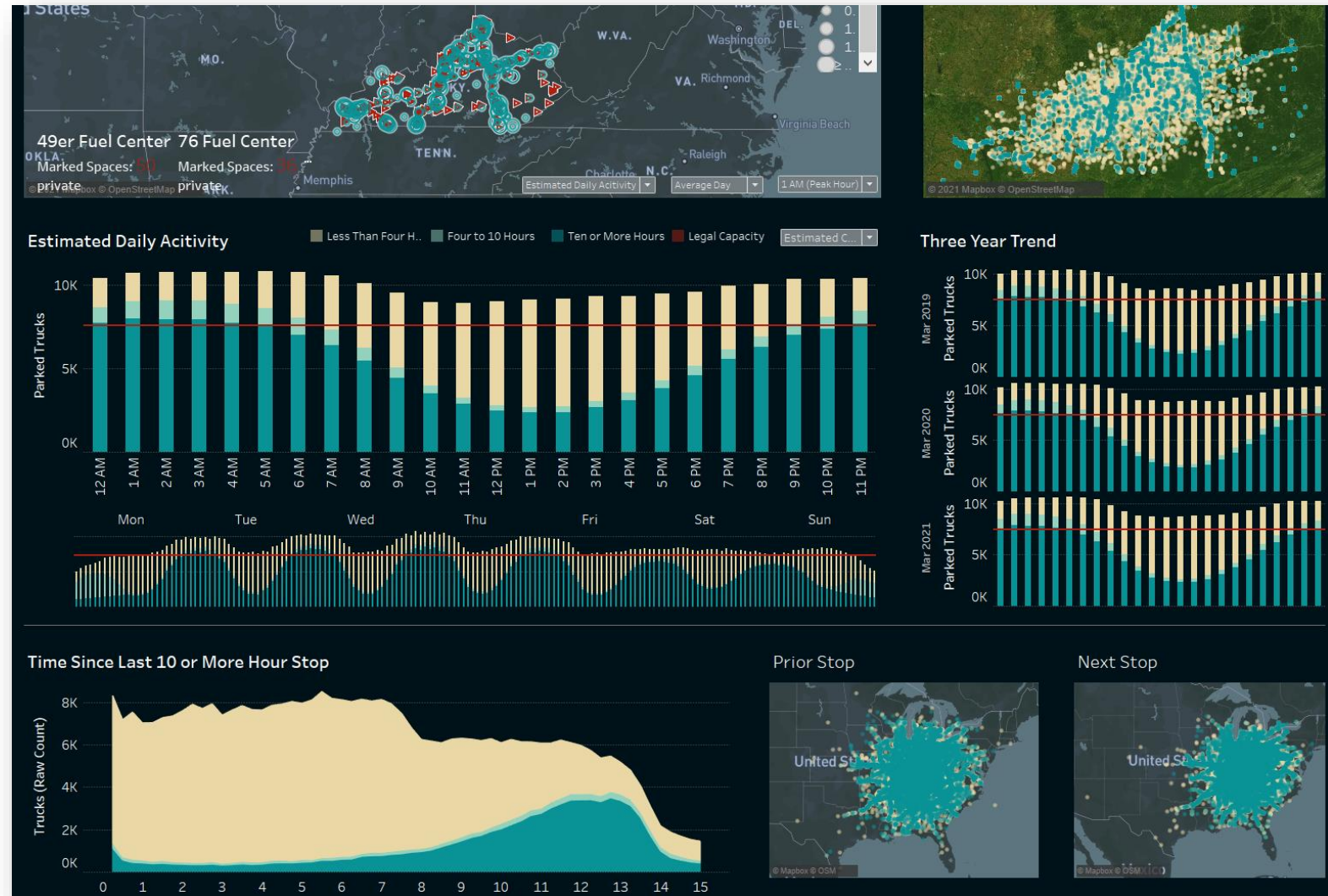
Inventory Analysis

- What is our supply?
 - 7,200 Spaces

Category	Demand	Capacity	Ratio
Rest Area	1,186	890	1.33
Weigh Station	131	144	0.91
Truck Stop	5,931	5,861	1.01
Other	411	281	1.46
Walmart/Box Store	295	-	n/a
Ramp	164	-	n/a
TOTAL	8,118	7,176	

Demand Analysis

- 9,000 drivers per night



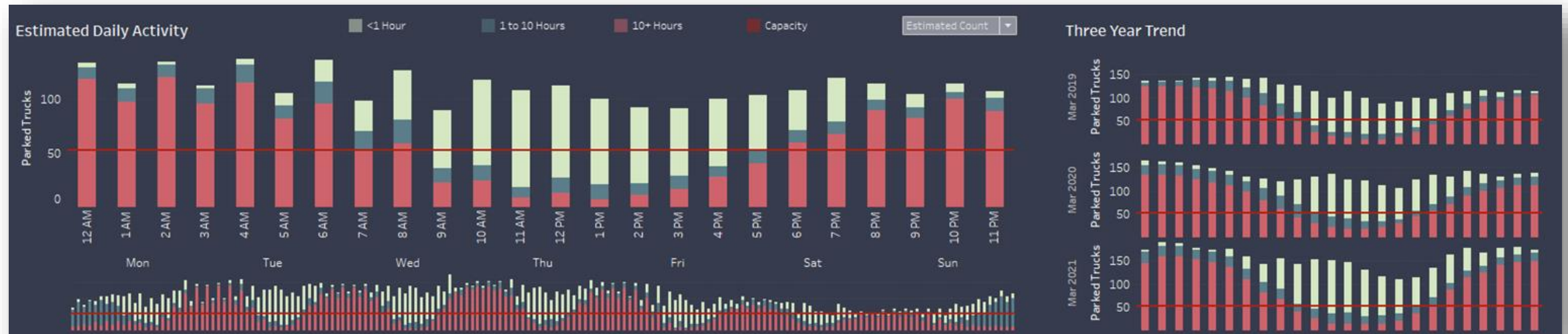
Demand Analysis

- I-71/I-75 Boone County Rest Areas
- Northbound
 - Capacity: 53 spaces
 - Peak Demand: 106
- Southbound
 - Capacity 67
 - Peak Demand: 150
- Dots
 - Red = 10+ hours
 - Blue = 1-10 hours
 - Green = <1 hour



Demand Analysis

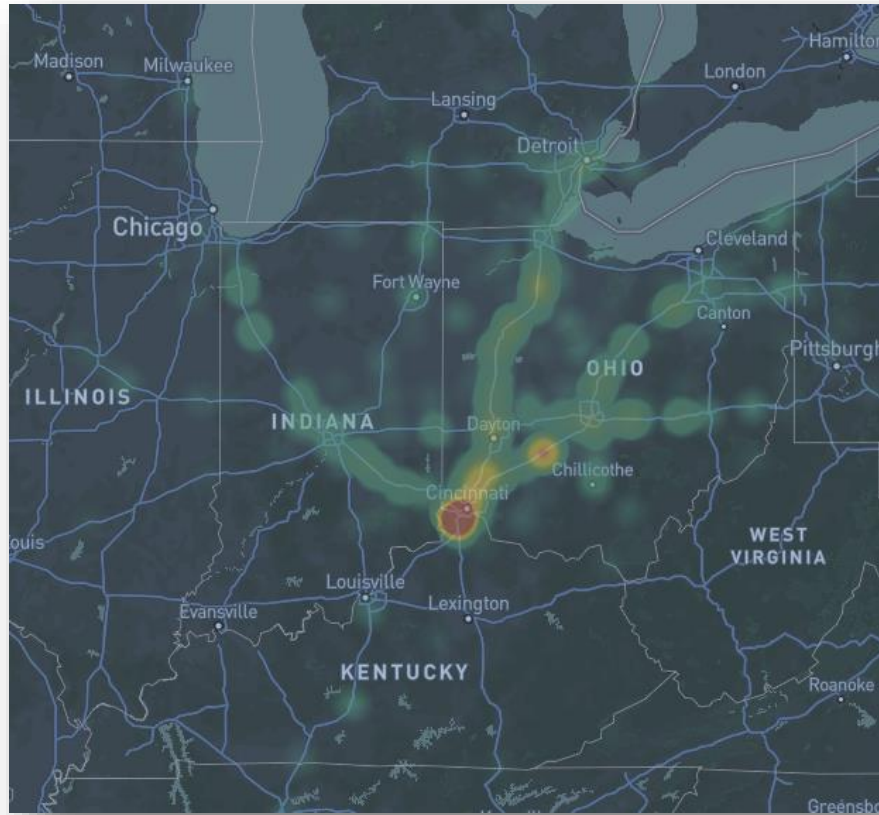
- At capacity between 6 P.M. and 8 A.M.
- Three-year trend shows increasing demand between 2019 and 2021



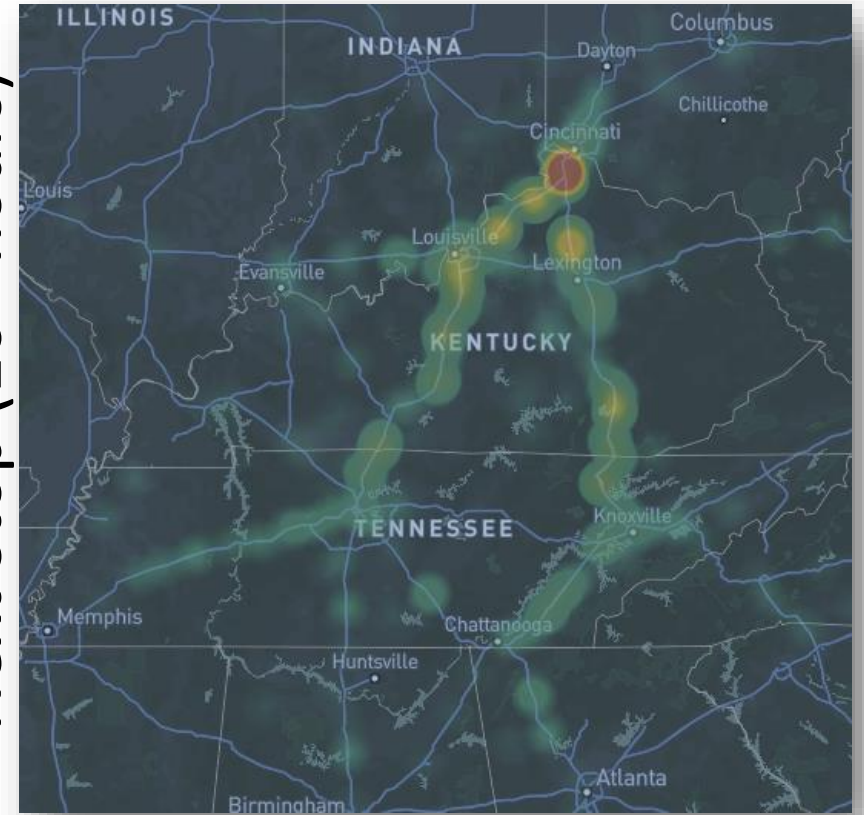
Demand Analysis

- Travel Sheds-Southbound

Last Stop (10+ hours)



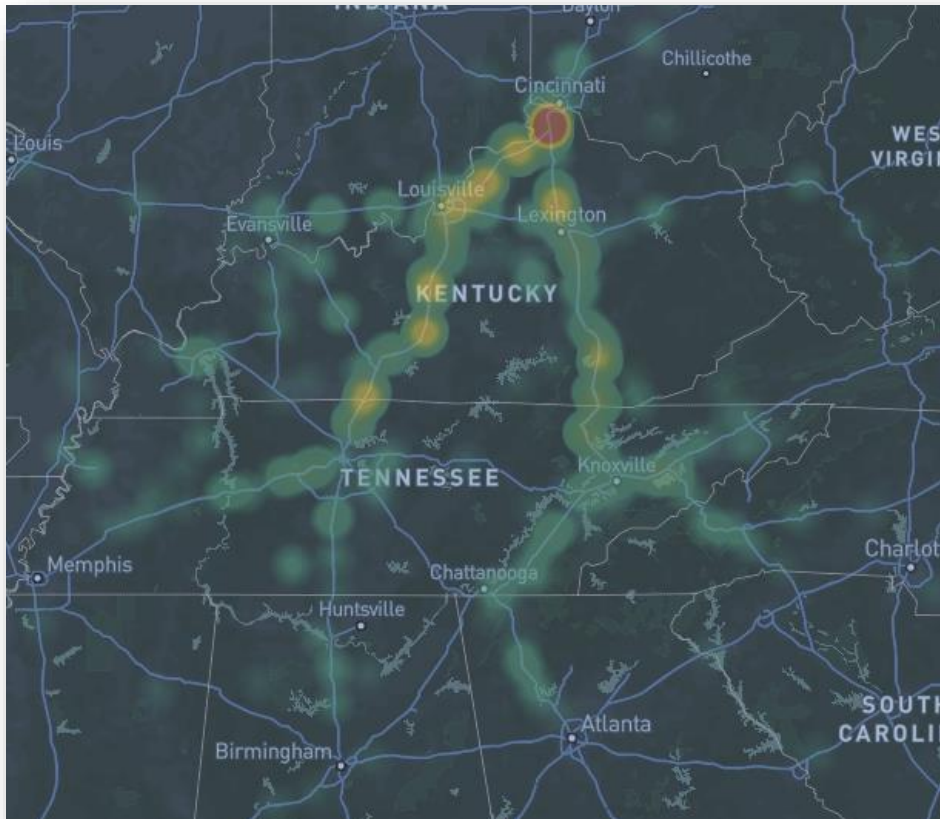
Next Stop (10+ hours)



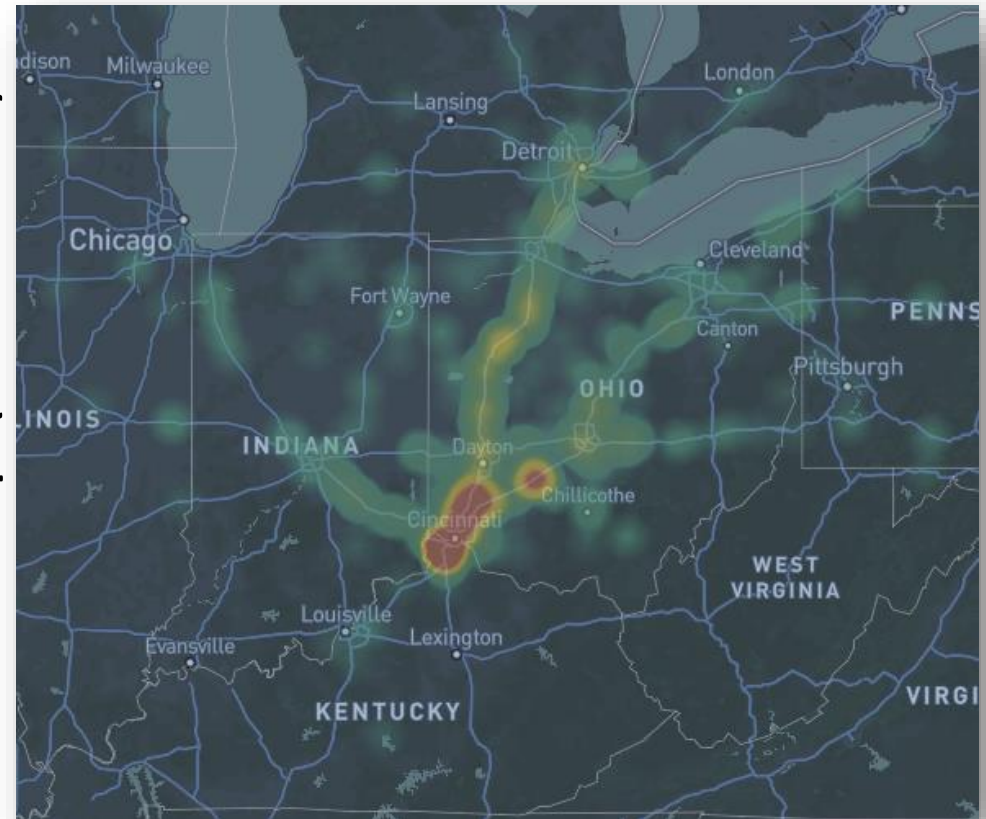
Demand Analysis

- Travel Sheds: Northbound

Last Stop (10+ hours)



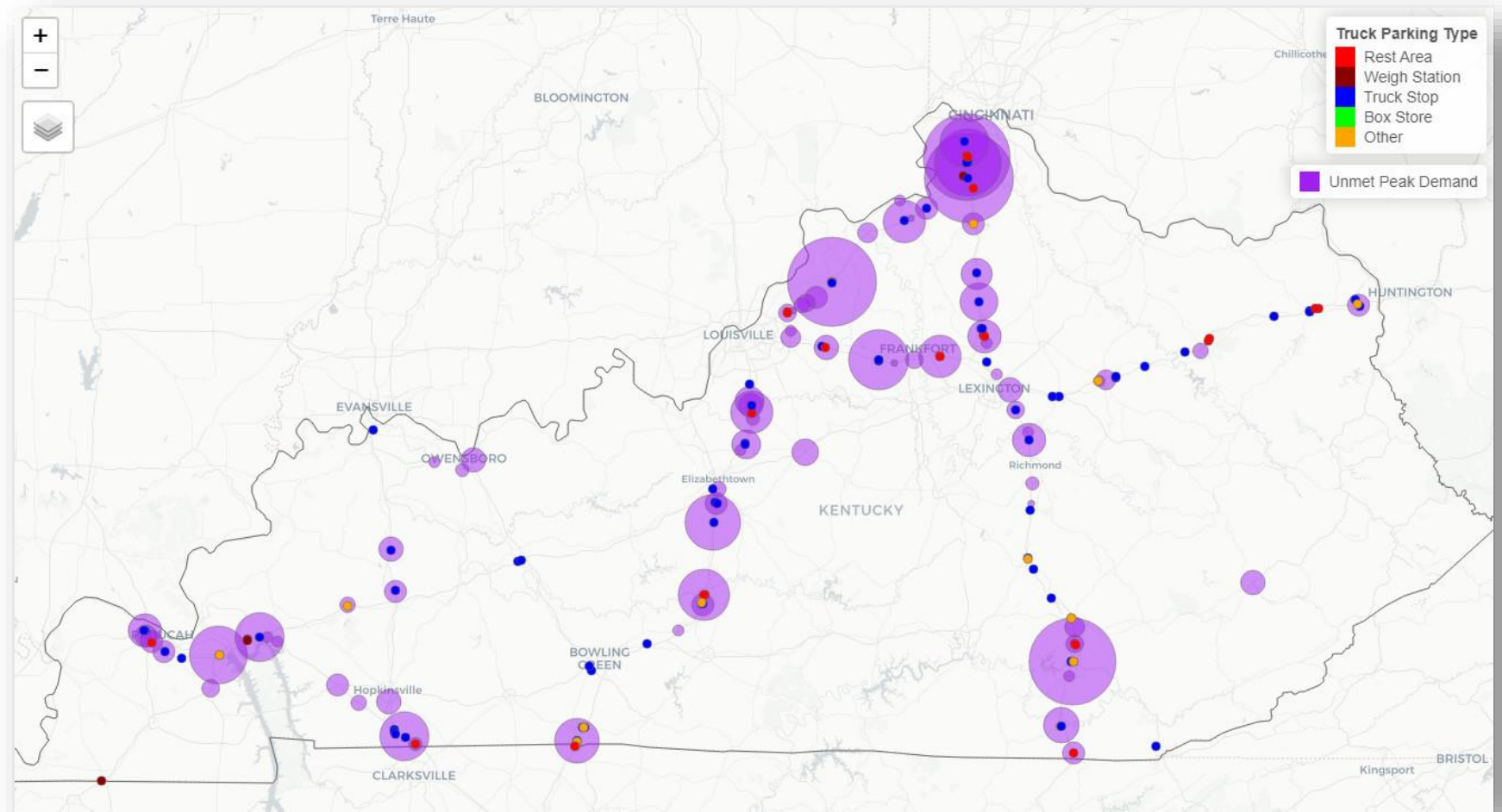
Next Stop (10+ hours)



THE KENTUCKY TRANSPORTATION CABINET

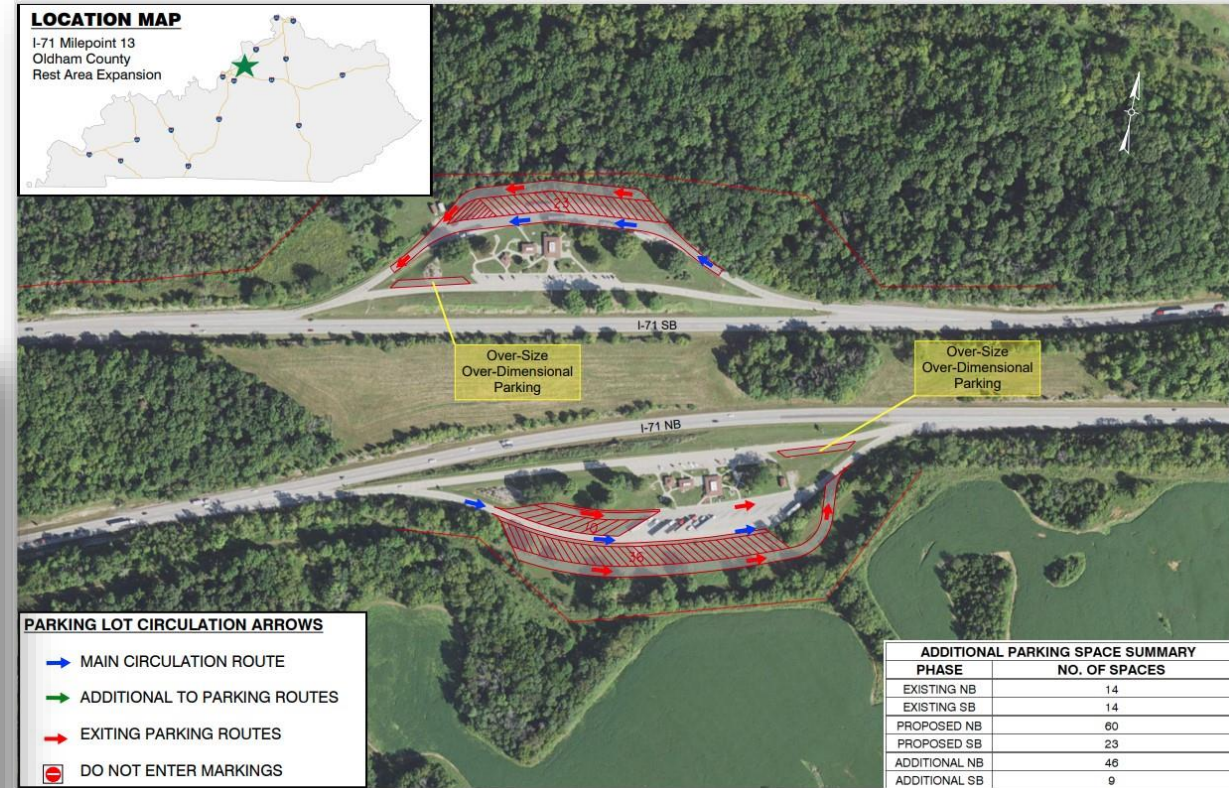
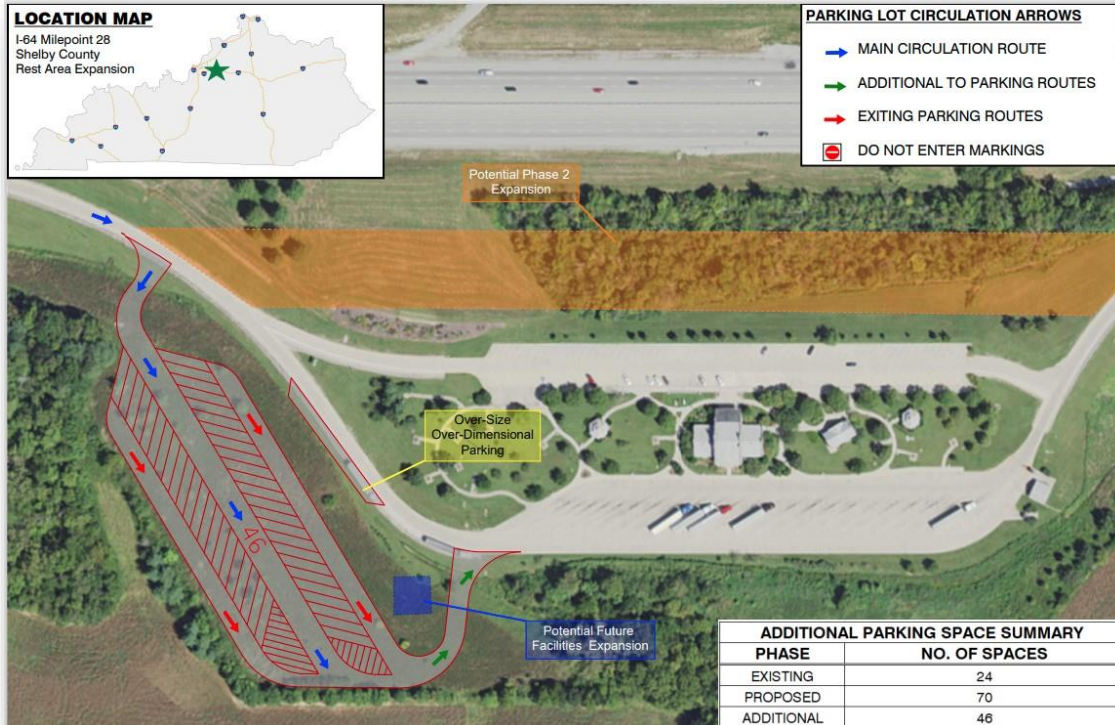
Demand Analysis

- Problem Areas



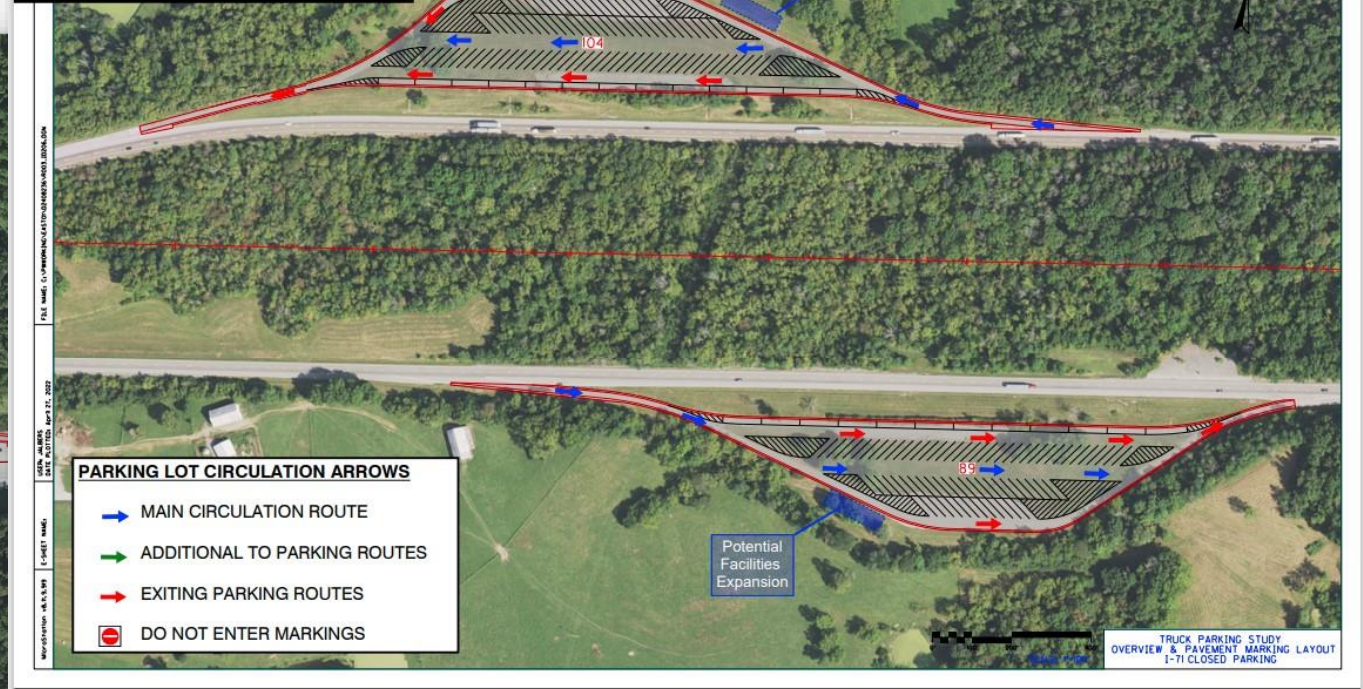
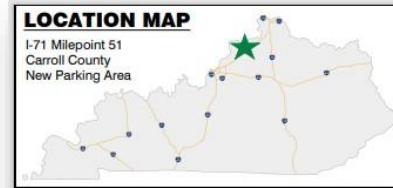
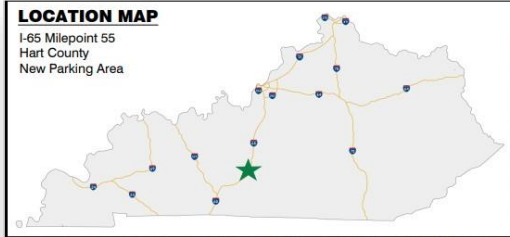
Right of Way Solutions

- Design Types
 - Existing Facility Expansion



Right of Way Solutions

- Design Types
 - Vacant Facility Expansion

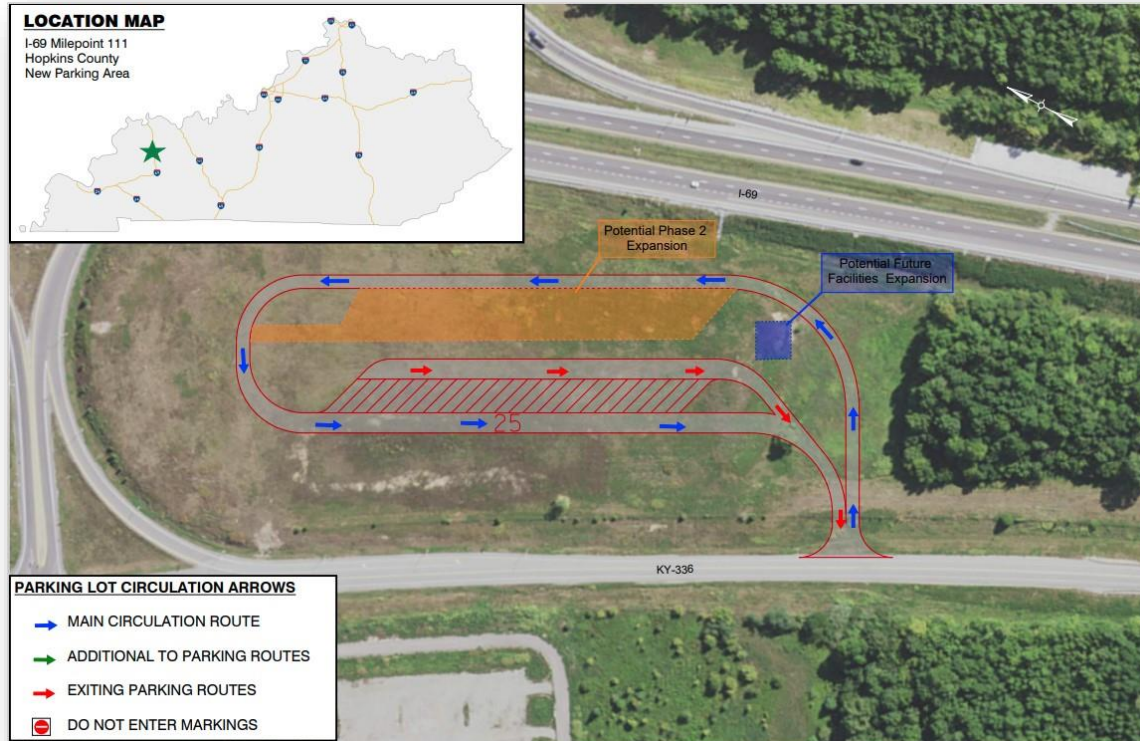
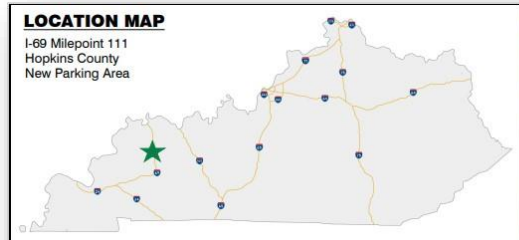


PARKING LOT CIRCULATION ARROWS

- MAIN CIRCULATION ROUTE
- ADDITIONAL TO PARKING ROUTES
- EXITING PARKING ROUTES
- ⊘ DO NOT ENTER MARKINGS

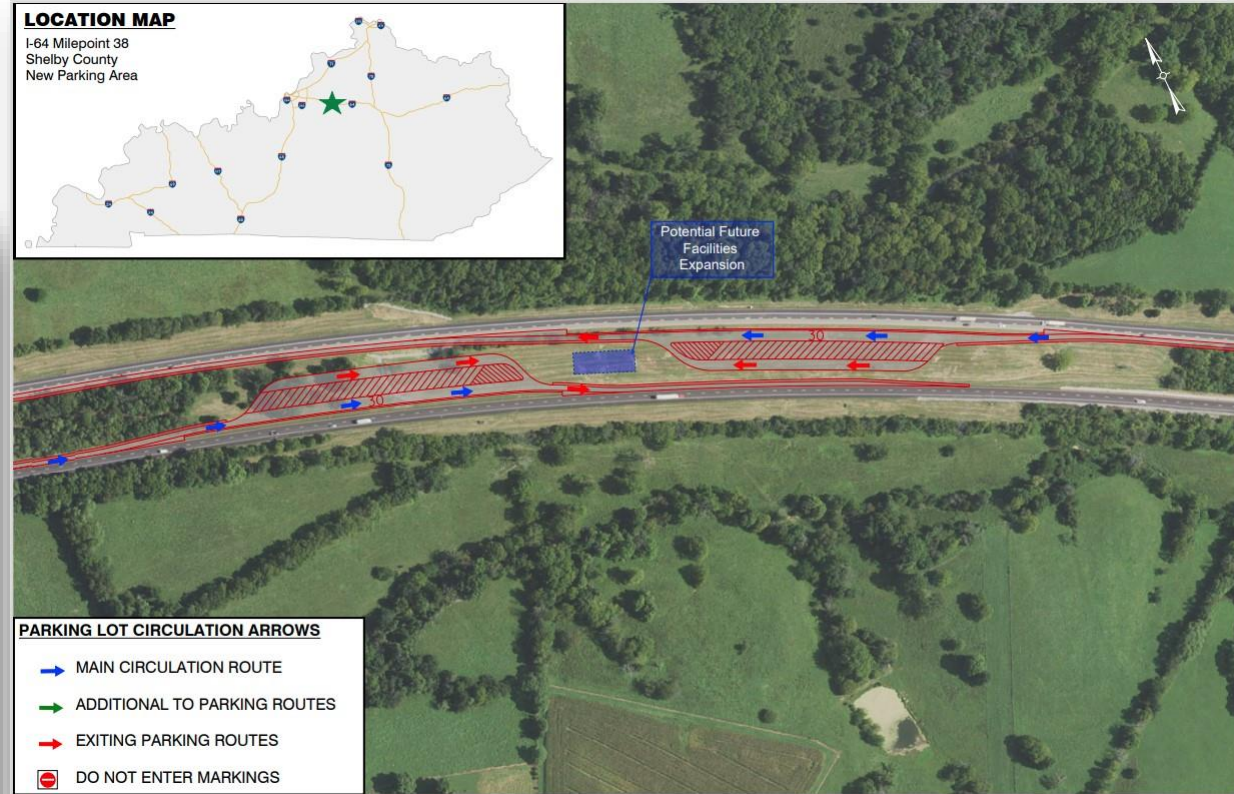
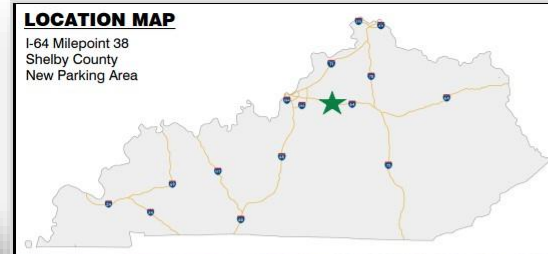
Right of Way Solutions

- Design Types
 - Excess ROW



PARKING LOT CIRCULATION ARROWS

- MAIN CIRCULATION ROUTE
- ADDITIONAL TO PARKING ROUTES
- EXITING PARKING ROUTES
- ⊘ DO NOT ENTER MARKINGS

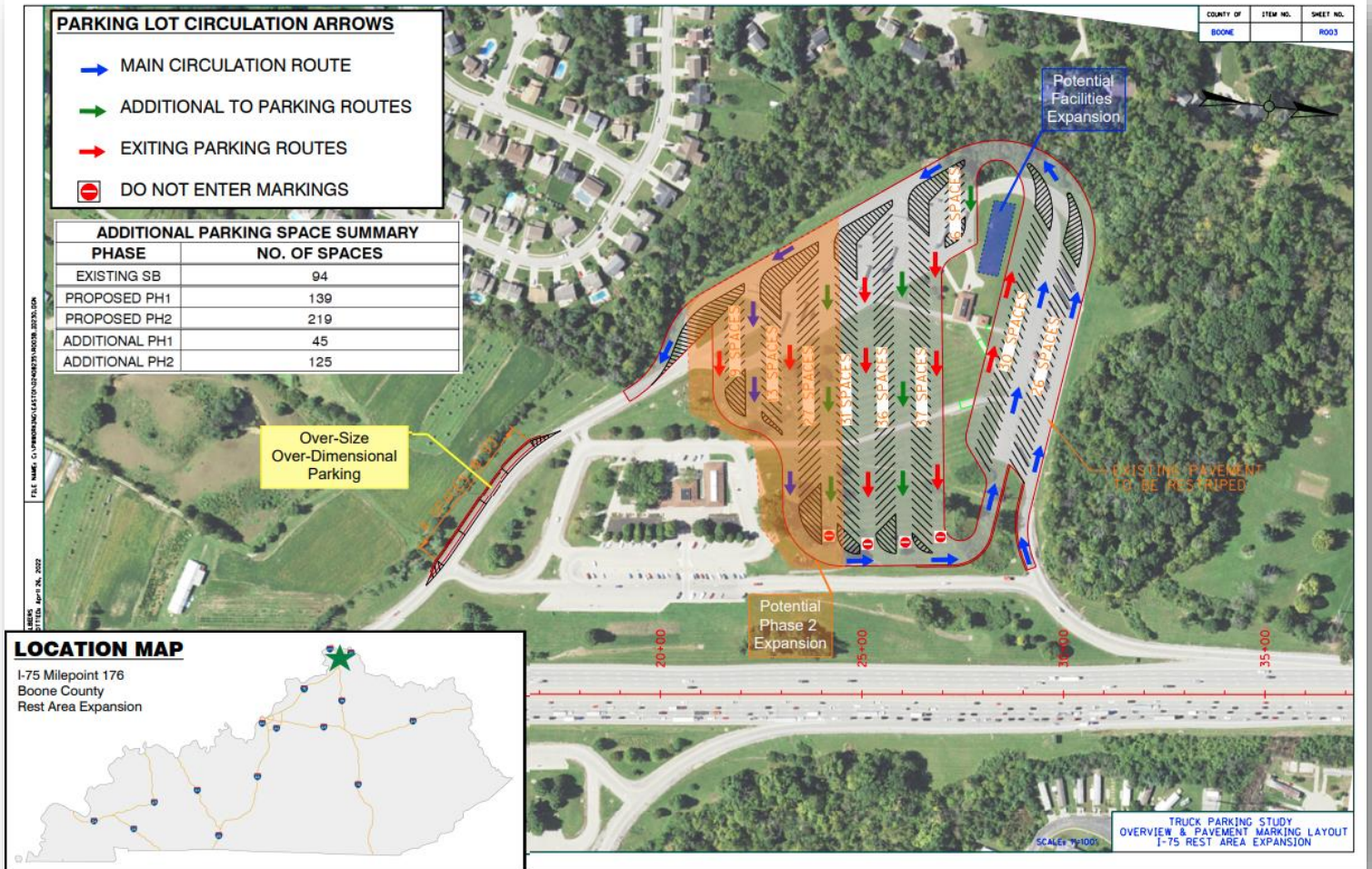


PARKING LOT CIRCULATION ARROWS

- MAIN CIRCULATION ROUTE
- ADDITIONAL TO PARKING ROUTES
- EXITING PARKING ROUTES
- ⊘ DO NOT ENTER MARKINGS

Right of Way Solutions

- Conceptual Designs
- Tier I
- Tier II



Outreach Efforts

- Drivers Survey #1-Needs



[kytruckparking.com](https://www.kytruckparking.com)

THE KENTUCKY TRANSPORTATION CABINET

Outreach Efforts

- Drivers Survey #1-Needs



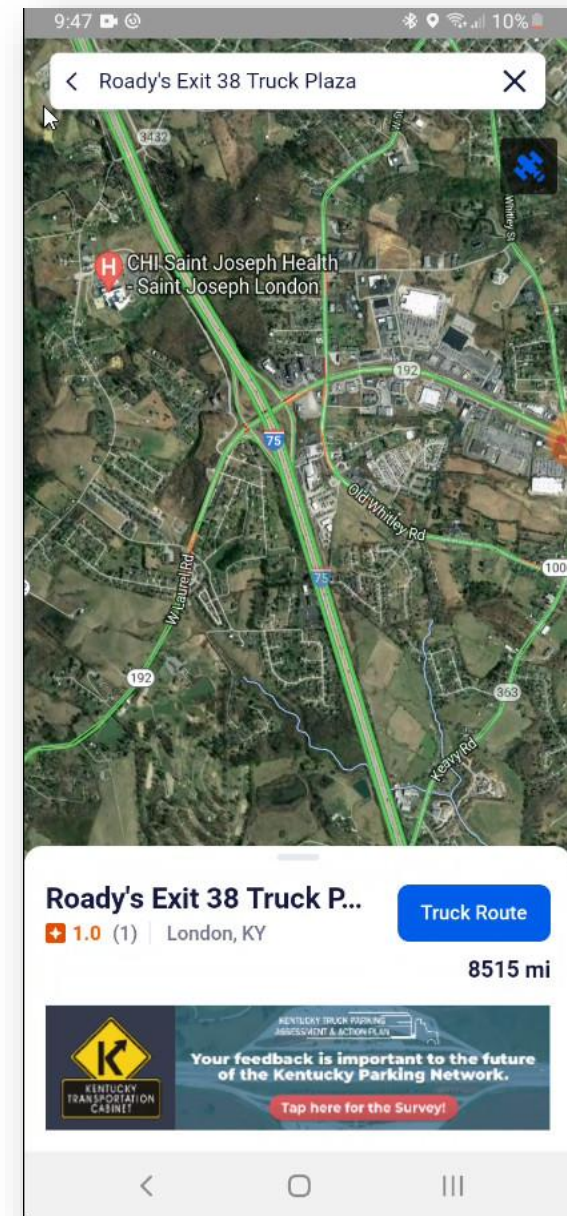
Outreach Efforts

- Drivers Survey #1-Needs



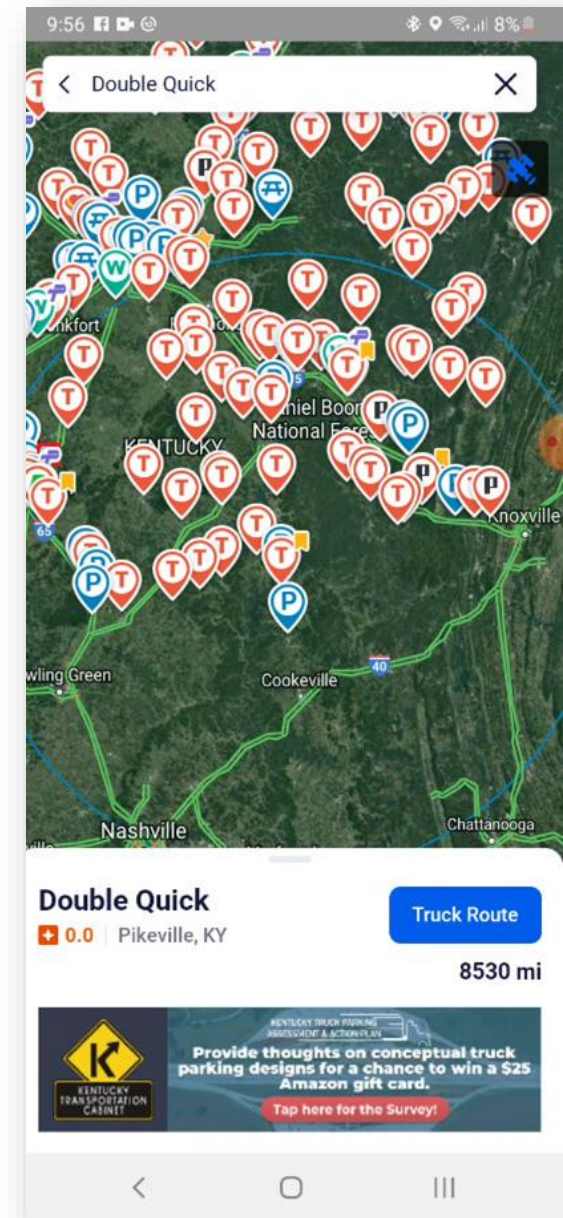
Outreach Efforts

- Drivers Survey #1-Needs



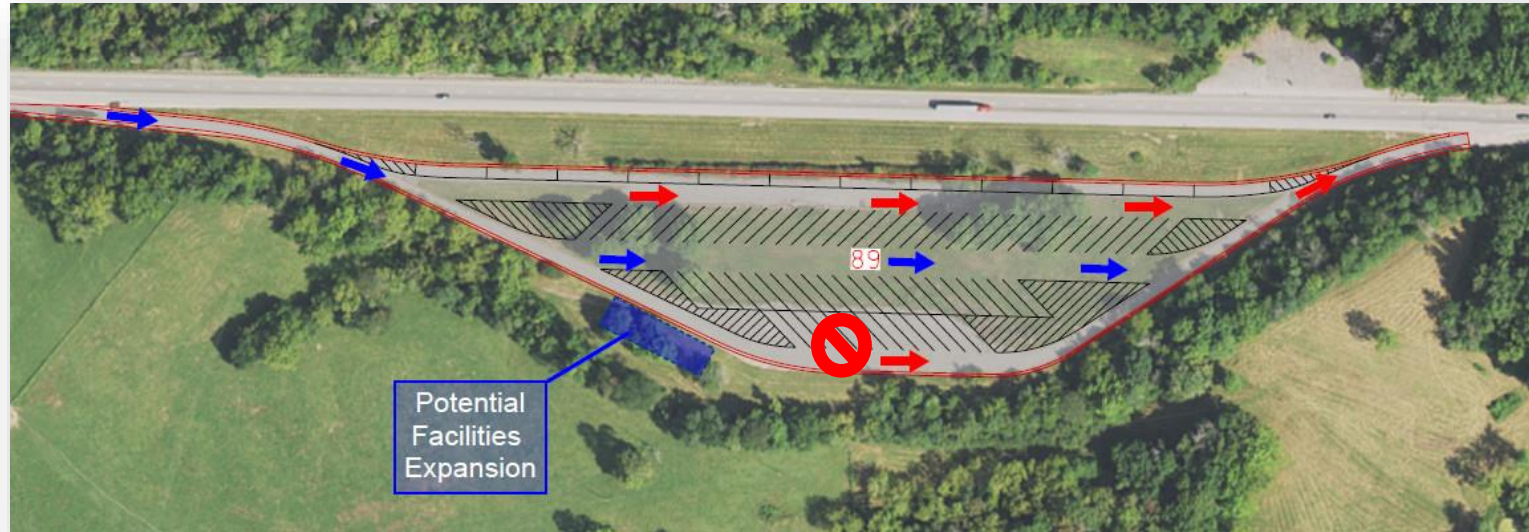
Outreach Efforts

- Drivers Survey #1-Needs
- FHWA Consultation
- KYTC Highway District Consultation
- Drivers Survey #2-Designs



Outreach Efforts

- Drivers Survey #1-Needs
- FHWA Consultation
- KYTC Highway District Consultation
- Drivers Survey #2-Designs



Technology Options

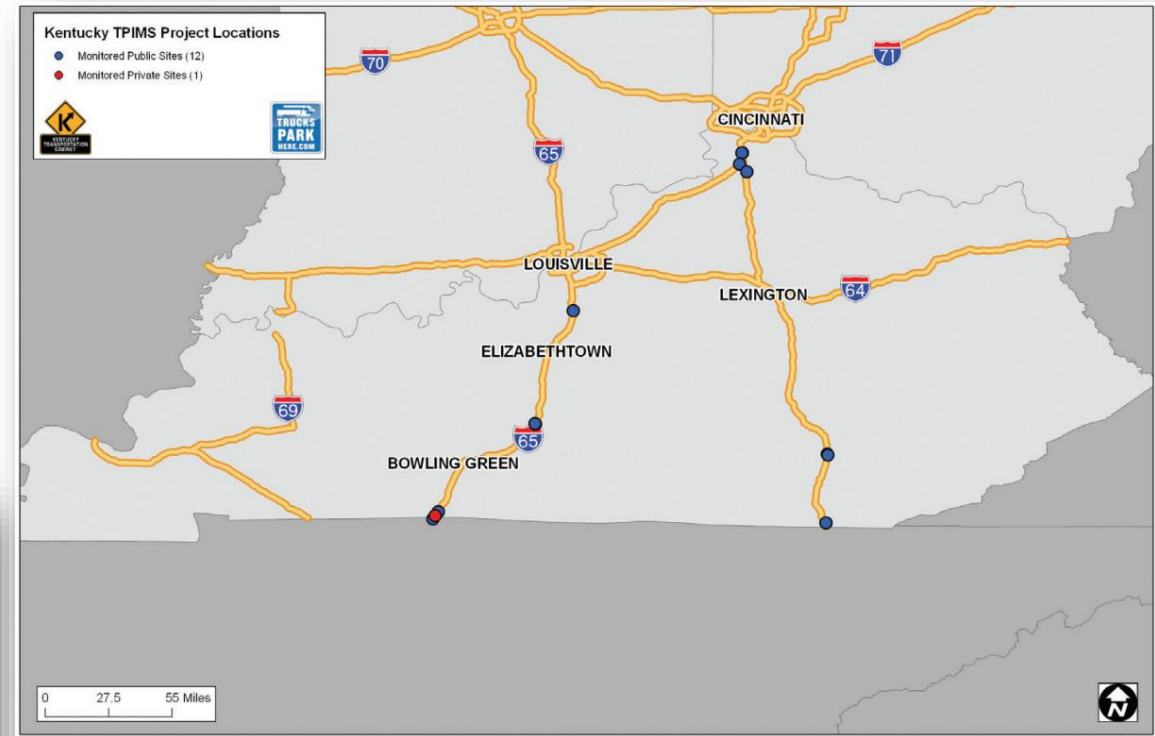
- TPIMS Expansion
- App Integration
- New technologies?

P
SPACES OPEN

I-75 SB Rest Area @ MP 177 **LOW**

I-75 SB Weigh Station @ MP 168 **38**

I-75 SB Weigh Station @ MP 34 **LOW**



Final Action Plan

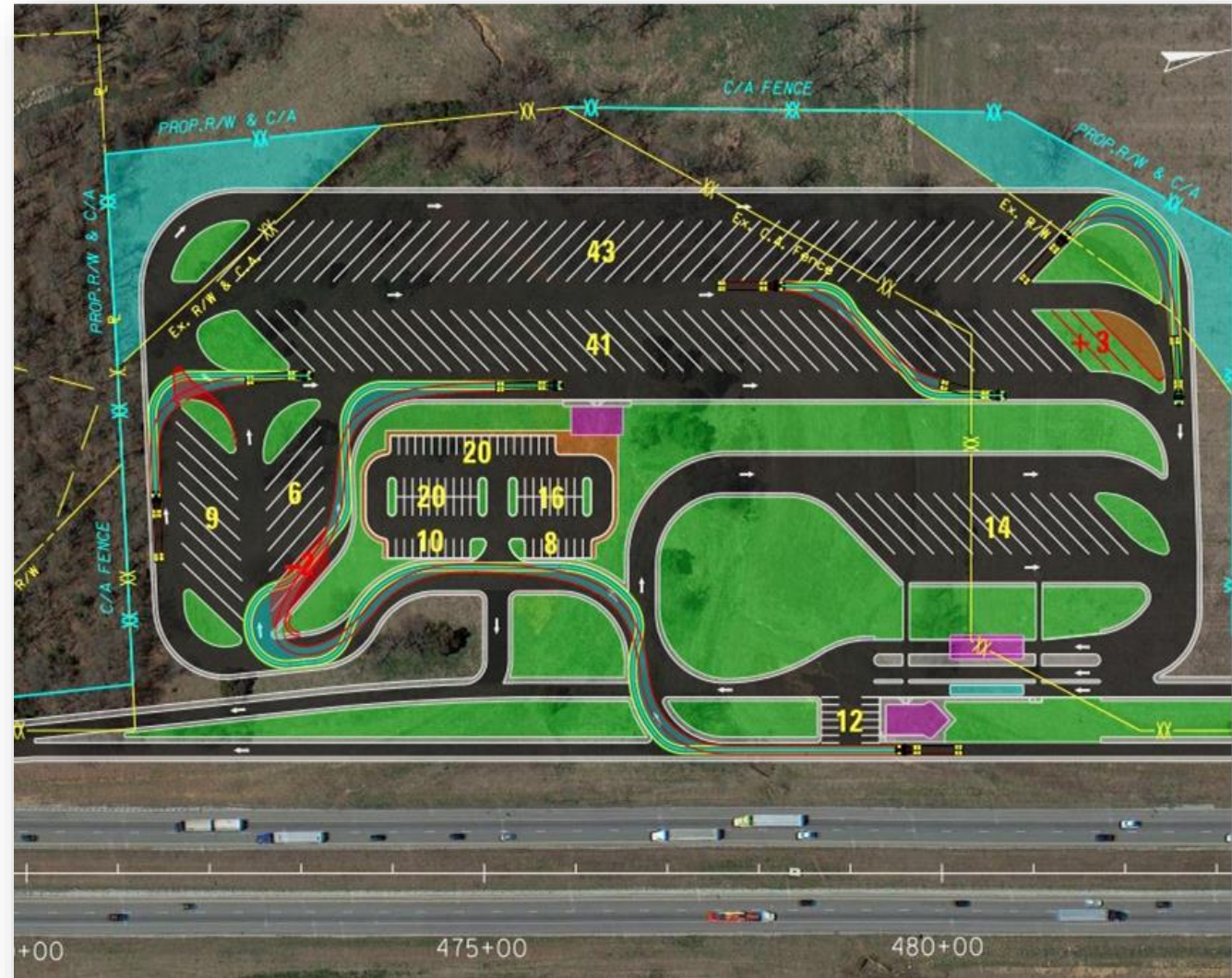
- Prioritized list of improvements
- 27 conceptual designs
- 10 sites with 15% drawings/estimates
- Schedule to develop/timing
- Technology recommendations
- Funding options
- Partnership opportunities



[kytruckparking.com](https://www.kytruckparking.com)

Recent Developments

- FY 23-I-71/I-75 Boone County Rest Area Truck Parking Study-\$1.1 million
- FY 24-\$4 million to expand truck parking at one of four sites.
- FY 24-I-24 Lyon County Weight Stations-\$1.9 million to construct restroom facilities.
- FY 23-27-I-65 Hardin County SB Weigh Station Relocation-\$16 million
 - 100+ truck parking spaces



QUESTIONS?

CONTACT INFORMATION

Jeremy Edgeworth, KYTC
Jeremy.edgeworth@ky.gov
502-782-5095

Twitter: @KYTC
Facebook: /kytc120



— **THE EASTERN
TRANSPORTATION
COALITION** —

CONNECTING FOR SOLUTIONS



THANK YOU!

For Questions or Additional Information, please contact:

Marygrace Parker, Freight Director, 518-852-4083, mgparker@tetcoalition.org