



## I-95 CC Vehicle Probe Project, VPP Suite & VTM November 2016

### Keep up to date on all things VPP!

**Meeting Reminder- VPP Suite User Group Web meeting, November 17, 2016 (10:30am - noon).** Please join us for presentations, a chance to ask questions & provide input.

**Sign up now! [To register for this web meeting, please click here](#)**

#### Spotlight Presentation: BMC provides data to plan holiday travel

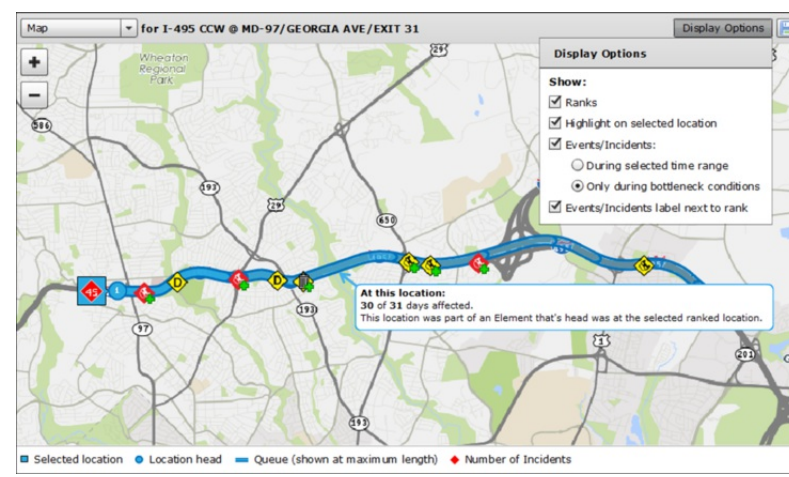
Ed Styc (Baltimore Metropolitan Council) will give a Spotlight Presentation illustrating how they used the Congestion Scan/Trend Map to inform Labor Day travelers of the best times to leave/return.

#### Improved Bottleneck Ranking Tool Tutorial/Demo

Are you interested in getting the most out of the new Bottleneck Ranking Tool? If so, please plan to participate in the presentation/demonstration of the new Bottleneck Tracking & Ranking Algorithm conducted by Drew Lund (UMD CATT Lab).

The goal of the session is to get users up to speed on the latest features, functions and visualizations. The new algorithm is significantly faster and has no date range restrictions. It's better at identifying the bottleneck source (head) and accounting for bottleneck dynamics (growing, shrinking or merging).

**To get the most out of this session – check it out! Go to the Bottleneck Ranking Tool, select the new algorithm and give it a try, so you can be better prepared to ask questions and share your experience.**



### VPP Suite Feature Deployment Table for Q3 is available!

See what improvements have been made to the VPP Suite during Q3 2016 and in the year-to-date!

### Other VPP News

#### VPP Volume & Turning Movement Project is Moving Forward

The Volume & Turning Movement Application Survey is currently underway. Steering Committee members are providing input on the needs, requirements, and market potential of a volume data feed. A reminder that all surveys need to be completed as soon as possible.

A Steering Committee meeting was held on October 13, 2016. The purpose of this project, sponsored by the I-95 Corridor Coalition, is to accelerate the time frame to achieve viable volume and turning movement data through outsourced probe data. All project related documents are now available on the VPP page of the I-95 Corridor Coalition website on the Volume & Turning Mvmt tab.

If agency members have any questions they should contact Kaveh Farokhi Sadabadi (UMD CATT), Denise Markow (I-95 Corridor Coalition) or Stan Young (NREL).

### Upcoming Meetings:

Please click the link below to register for the web meeting.

[VPP Suite User Group Web meeting - November 17, 2016 \(10:30am-noon\)](#)

### Recent Validation Results on the

**website:** (Under the validation tab)

- [MD Validation: US-1 & US-29 - April 2016 \(MD-10\)](#)
- [PA Validation: PA-3, PA-23 & US-30 - May 2016 \(PA-09\)](#)
- [NH Validation: NH - I-89 & I-93 - Sept 2016 \(NH-01\)](#)

### Recent Meeting Info

VPP Suite User Group Web meeting - July 28, 2016

- [Main Presentation](#)
- [Meeting Notes](#)
- [VPP Suite Feature Deployment Table](#)

[Past copies of the VPP newsletters are available on the Coalition Website under the Newsletters Tab!](#)



### Questions or Concerns:

**General Coalition or VPP Questions:** Denise Markow at 301-789-9088 or [dmarkow@i95coalition.org](mailto:dmarkow@i95coalition.org).

**VPP Contracting Issues:** Kathy Frankle at 301-405-8271 or [kfrankle@umd.edu](mailto:kfrankle@umd.edu)

**VPP Data Validation:** Masoud Hamedi at 301-405-2350 or [masoud@umd.edu](mailto:masoud@umd.edu)

**VPP Suite: (Technical)** UMD CATT Lab at [vpp-support@rtis.org](mailto:vpp-support@rtis.org)

**Volume & Turning Mvmt Project:** Kaveh Sadabadi at [kfarokhi@umd.edu](mailto:kfarokhi@umd.edu), Denise Markow at [dmarkow@i95coalition.org](mailto:dmarkow@i95coalition.org) or Stan Young at [Stanley.Young@nrel.gov](mailto:Stanley.Young@nrel.gov)

**VPP Logistics:** Joanna Reagle at 610-228-0760 or [jreagle@kmjinc.com](mailto:jreagle@kmjinc.com)

Share this email:



[Manage](#) your preferences | [Opt out](#) using TrueRemove™

Got this as a forward? [Sign up](#) to receive our future emails.

View this email [online](#).

120 E. Lancaster Ave, Suite 105  
Ardmore, PA | 19003 US

This email was sent to .

To continue receiving our emails, add us to your address book.