



## RITIS User Group Updates

Spring 2023

Help Improve  
RITIS

Transportation  
Data  
Marketplace

Upcoming  
Coalition  
Events

### Catch up on The Eastern Transportation Coalition - RITIS News!

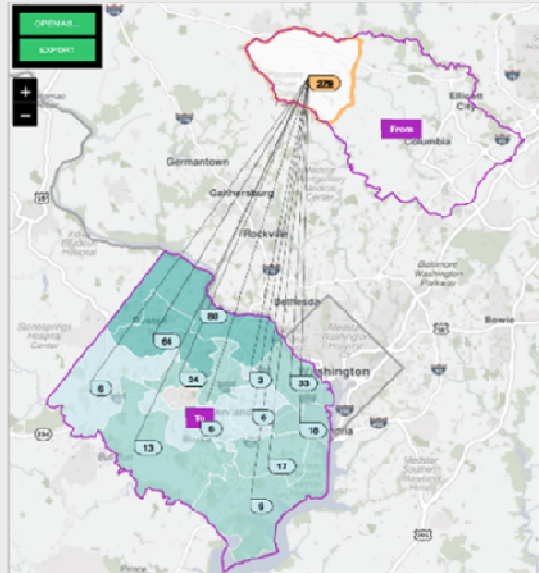
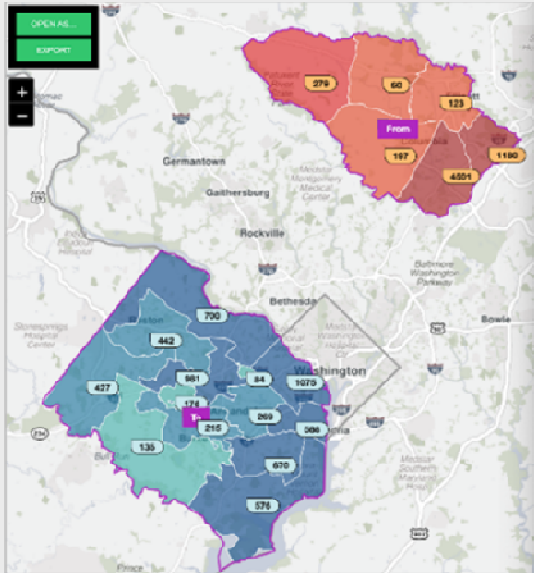
The Coalition has been very busy providing RITIS users with training and information exchanges and we are sharing it with you here!

For information regarding the events described below, please visit the User Group Tab on the RITIS page (<https://tetcoalition.org/projects/ritis-pda-suite/>).

### **RITIS Workshop: Using Trip Analytics to Support Operations & Planning - April 20, 2023**

**Rick Ayers and Greg Jordan of the University of Maryland CATT Lab** led a virtual workshop of almost 150 people detailing the novel ways that planning and operations teams can use the Trip Analytics tool. The first half of the workshop focused on uses for operations staff. Greg demonstrated use cases for detour planning and compliance, before-and-after studies for signal timings, and major event “last mile” routing and travel time statistics. The second half focused on use cases for planners, such as model calibration, bottleneck mitigation studies, and urban route truck compliance. More information can be found via the links below.

## Visualizing an OD Matrix



- [Presentation with Audio](#)
- [Slides Only](#)
- [Question & Answer Summary](#)

### RITIS User Group Meeting – May 4, 2023

A RITIS User Group Web Meeting was held on May 4, 2023. Please click on the links below for more information about the event or visit the User Group tab on the RITIS page of the Coalition website (<https://tetcoalition.org/projects/ritis-pda-suite/>).

- [Presentation with Audio](#)
- [Slides Only](#)
- [Question & Answer Summary](#)

### Spotlight Presentation 1: Using RITIS to Assess the Benefits of ITS Deployments in Louisiana

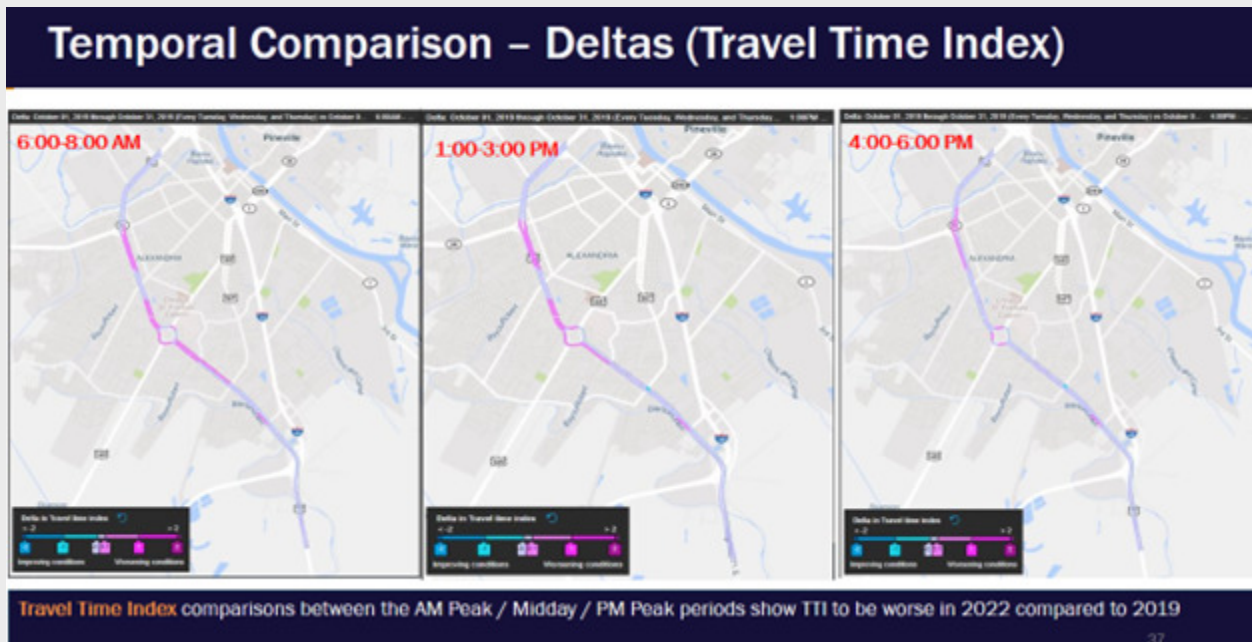
Introduced by **Julius Codjoe of the Louisiana Transportation Research Center (LTRC)**, **Stephen Mensah of Stantec** presented how tools in the RITIS & PDA Suite were used to determine the effectiveness of ITS deployments.

Stantec and LTRC used performance charts, performance summaries, travel time comparisons, travel time delta ranking, temporal comparison maps, and causes of congestion graphs to compare before-and-after performance measures for an ITS deployment along US-71, between October 2019 (pre-deployment) and October 2022 (post-deployment). These

tools helped provide a framework for future studies to justify costs for corridor-wide deployments of DMS, cameras, and fiber to increase safety and reliability.

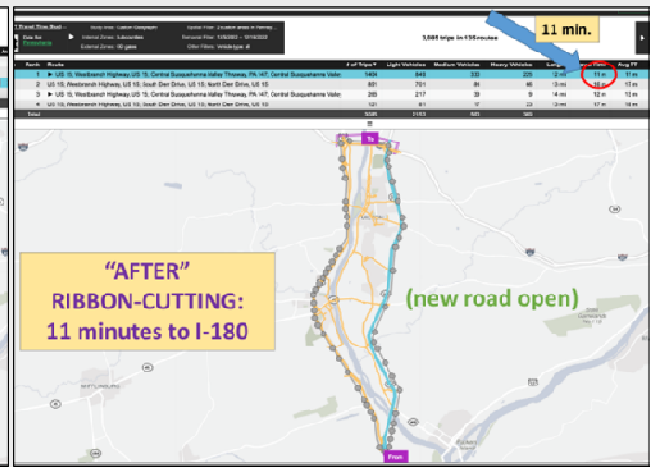
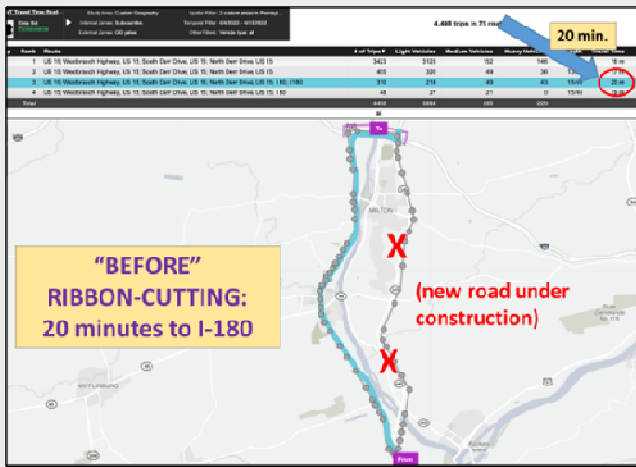
The Stantec and LTRC team also used the Bottleneck Ranking tool to highlight corridors to be targeted for ITS deployments for rapid incident detection and management.

The team continues to monitor locations and refine their evaluation processes, citing RITIS tools, along with the ITS deployment framework, for their ability to better target locations and evaluate the benefits of ITS deployment for taxpayers.



## Spotlight Presentation 2: Before and After Ribbon-cutting: Documentation of Demand Shift and Travel Time Improvements for a New Freeway Link

**Greg Jordan of the University of Maryland CATT Lab** provided a demonstration of how to use the Trips Analytics tool to conduct before and after studies for new roadway facilities. The study included data from April 4-15, 2022, before a new freeway bridge (Route 147) opened, and again from December 5-16, 2022, several months after the opening of Route 147. As shown below, the median travel time through the study area decreased from 20 minutes to 11 minutes as drivers selected the new faster route. Participants were particularly interested in the ability to select custom timeframes in Trip Analytics, including hour-by-hour data.



## Want to share how your agency uses the RITIS PDA Suite?

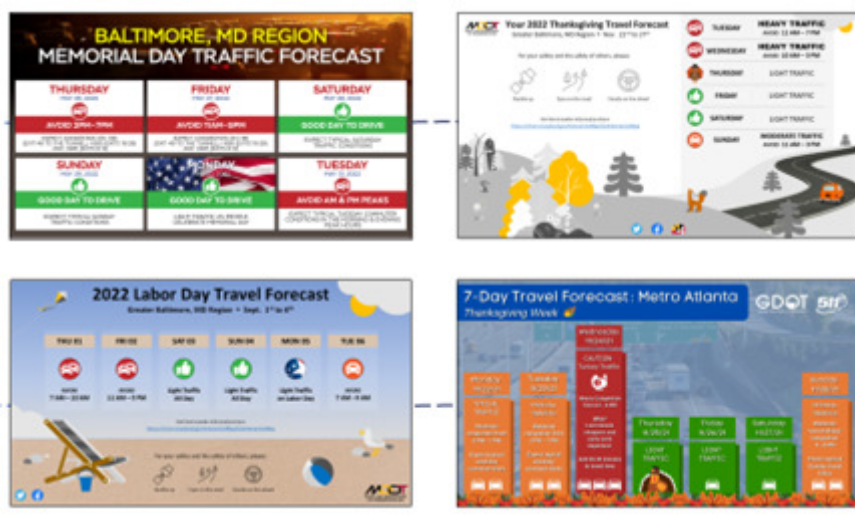
We'd like to thank Stephen and Greg for their presentations. Does your agency have a RITIS use case to share with others? The Eastern Transportation Coalition would like to highlight how agencies use the RITIS tools. Please contact John Allen ([jalLEN35@umd.edu](mailto:jalLEN35@umd.edu)) and Rick Ayers ([rayers@umd.edu](mailto:rayers@umd.edu)) to discuss sharing your use case.

## Performance Measures Working Group Update

John Allen of the University of Maryland CATT Lab reviewed the progress of the PDA Suite Performance Measures Working Group. The group met in May 2023 to focus on developing a work zone reporting package in conjunction with the Automated Work Zone Reporting Working Group.

The Holiday Travel Forecast Reporting package is now available on the [RITIS Templates page](#). The package includes templates, design resources, agency use cases, and a how-to guide.

Staff from member agencies who are interested in reviewing these templates should contact John Allen ([jalLEN35@umd.edu](mailto:jalLEN35@umd.edu)) or Rick Ayers ([rayers@umd.edu](mailto:rayers@umd.edu)).



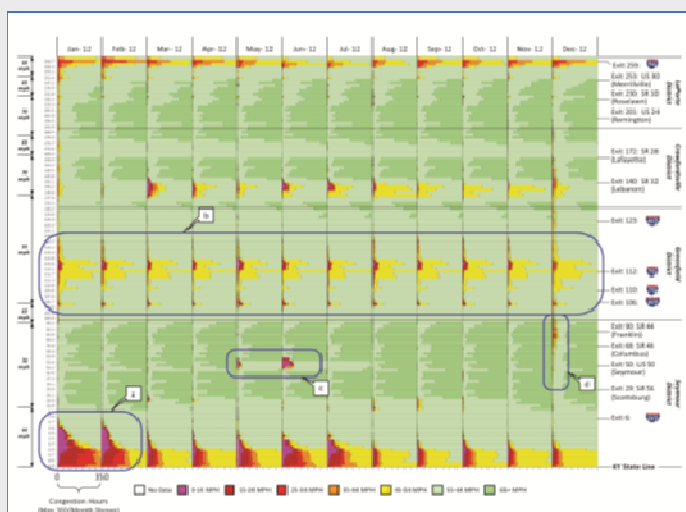
## RITIS Product Enhancement Working Group Update

**Bob Frey of Massachusetts DOT** provided an update on the Product Enhancement Working Group. Their most recent meeting was held on March 2, 2023, during which members suggested RITIS enhancements to fund during FY2024. The next meeting will be in the summer of 2023.

Some updates on the enhancements include:

- Corridor Speeds Bin enhancements (below) were deployed in May 2023
- The Causes of Congestion Chart will now be updated weekly
- The Map Click Corridor Selection feature is currently in development
- Sharing of Dashboards is currently in development
- Police Crash Data (safety analytics) in the Event Query Tool will be deployed fall 2023

Staff from agencies who are interested in joining this group should contact Bob Frey ([bob.frey@dot.state.ma.us](mailto:bob.frey@dot.state.ma.us)) and Michael Pack ([PackML@umd.edu](mailto:PackML@umd.edu)).



## What's New in RITIS!

To find out more about what's new in the RITIS Platform, visit the “What’s New” section of each major platform area:

- [https://www.ritis.org/release\\_notes](https://www.ritis.org/release_notes)
- <https://pda.ritis.org/suite/updates/>
- <https://trips.ritis.org/new>

## Agency Feedback

The CATT Lab team is always looking for ways to improve the RITIS platform and the PDA Suite. RITIS users can reach out at any time to the support team at [support@ritis.org](mailto:support@ritis.org).



### Update your Traffic Volumes:

The tools discussed provide more accurate results when **you** provide updated traffic volume data! Please contact Michael Pack ([PackML@umd.edu](mailto:PackML@umd.edu)) for more information on getting your newer data into the PDA Suite.

## Transportation Data Marketplace

The Transportation Data Marketplace has six data sets and 12 vendors! Visit the [TDM page of the Coalition's website](#) for more information

### Follow the Coalition on YouTube and subscribe to be informed!

The Coalition has a YouTube channel. Recordings from many of the Coalition's webinars are available [here - take a look!](#)

### Questions or Comments:

**General Coalition:** Denise Markow at 301.789.9088 or [dmarkow@tetcoalition.org](mailto:dmarkow@tetcoalition.org)

**Logistics:** Joanna Reagle at 610.228.0760 or [jreagle@kmjinc.com](mailto:jreagle@kmjinc.com)