



## RITIS Workshop: Integrating RITIS Probe Data Analytics and GIS for CMP Report Visualizations Follow-Up March 2025

RITIS  
Login Page

Help  
Improve  
RITIS

Transportation  
Data  
Marketplace

Upcoming  
Coalition  
Events

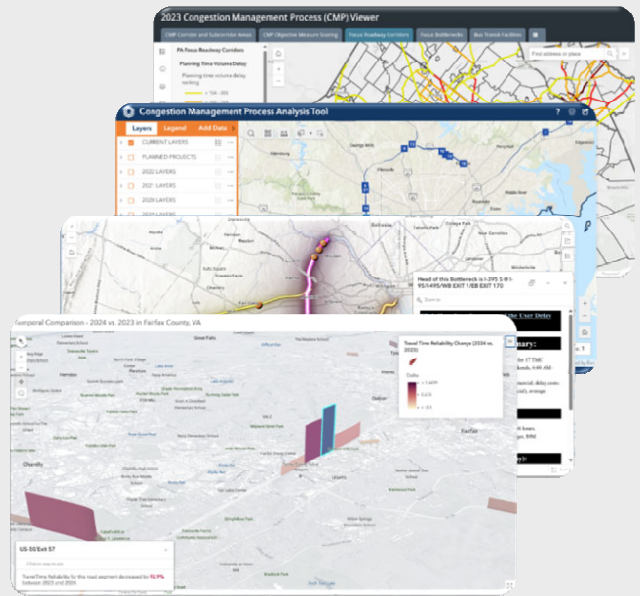
Thanks to those who participated in the RITIS Workshop: *Integrating RITIS Probe Data Analytics and GIS for CMP Report Visualizations* held on February 25, 2025. We hope that you found the workshop informative and that it gave you a better understanding of how ArcGIS Online can be integrated with PDA Suite Tools to openly share performance measure insights.

To access this or other **Workshops and Working Groups presentations**, visit the Workshops and Working Groups tab on the RITIS page of the Coalition website (<https://tetcoalition.org/projects/ritis-pda-suite/>), where you will find links to the following:

- Presentation with Audio
- Slides Only
- Question & Answer Summary

Rick Ayers of the University of Maryland's CATT Lab guided participants in using RITIS Probe Data Analytics Suite and [ArcGIS Online](#) to enhance their ability to monitor, understand, and share urban congestion data. The example centered on the [top ten bottleneck causes in Fairfax County, Virginia](#).

[ArcGIS Online](#) is a ubiquitous platform for users who want to create advanced data visualizations (beyond the RITIS platform). It provides a vast library of templates used to visualize CMP reports for all agencies and easily incorporates tabular integration efforts into spatial data.



In addition to ArcGIS Online, Rick used the following PDA Suite tools for his demonstration:

- Bottleneck Ranking
- Temporal Comparison Maps
- User Delay Cost
- Causes of Congestion

## RITIS Resources

Links to additional RITIS reports, tools, and tutorials mentioned in the workshop can be found below. *Please note that access to the resources below may require logging into RITIS*

- Probe Data Analytics - <https://pda.ritis.org>
- Report Template Page - <https://learn.ritis.org/reports>
- Tool Catalog - <https://ritis.org/tools>
- Tutorials - <https://ritis.org/tutorials>
- States Using CATT Lab Products: [go.umd.edu/States](http://go.umd.edu/States)
- URLs Used in Workshop Demonstration:  
<https://drive.google.com/file/d/1JvdRBjy9QycRTQh2ITw1v3cs0OtyHuX7/view>

## Agency Feedback

The CATT Lab team is always looking for ways to improve the RITIS platform and the PDA Suite. RITIS users can reach out at any time to the support team at [support@ritis.org](mailto:support@ritis.org).

### **Upcoming Coalition Events – stay tuned for more information!**

- RITIS User Group Web Meeting - May 1, 2025 - *stay tuned for more information!*



#### **Update your Traffic Volumes:**

The tools discussed provide more accurate results when **you** provide updated traffic volume data! Please contact Michael Pack ([PackML@umd.edu](mailto:PackML@umd.edu)) for more information on getting your newer data into the PDA Suite.

### **Transportation Data Marketplace**

The Transportation Data Marketplace has six data sets and 11 vendors. Visit the [TDM page of the Coalition's website](#) for more information

### **Follow the Coalition on social media and subscribe to be informed!**

Recordings from many of the Coalition's web events are available on [TETC's YouTube channel - take a look.](#)

Follow the Coalition on [LinkedIn](#) to hear about events, collaborations, and industry news.

#### **Questions or Comments:**

**TSMO Program:** Sheryl Bradley at [sbradley@tetcoalition.org](mailto:sbradley@tetcoalition.org)

