



RITIS User Group Web Meeting Follow Up December 2023

Get Access

Help
Improve
RITIS

Transportation
Data Marketplace

Upcoming
Coalition
Events

Thanks to those who participated in the RITIS Workshop: What's New with PDA & RITIS Tools held on December 5, 2023. We hope that you found the workshop useful in making your performance reporting quicker, easier, and more informative.

To access this, or other **Workshops and Working Groups presentations**, visit the Workshops and Working Groups tab on the RITIS page of the Coalition website (<https://tetcoalition.org/projects/ritis-pda-suite/>).

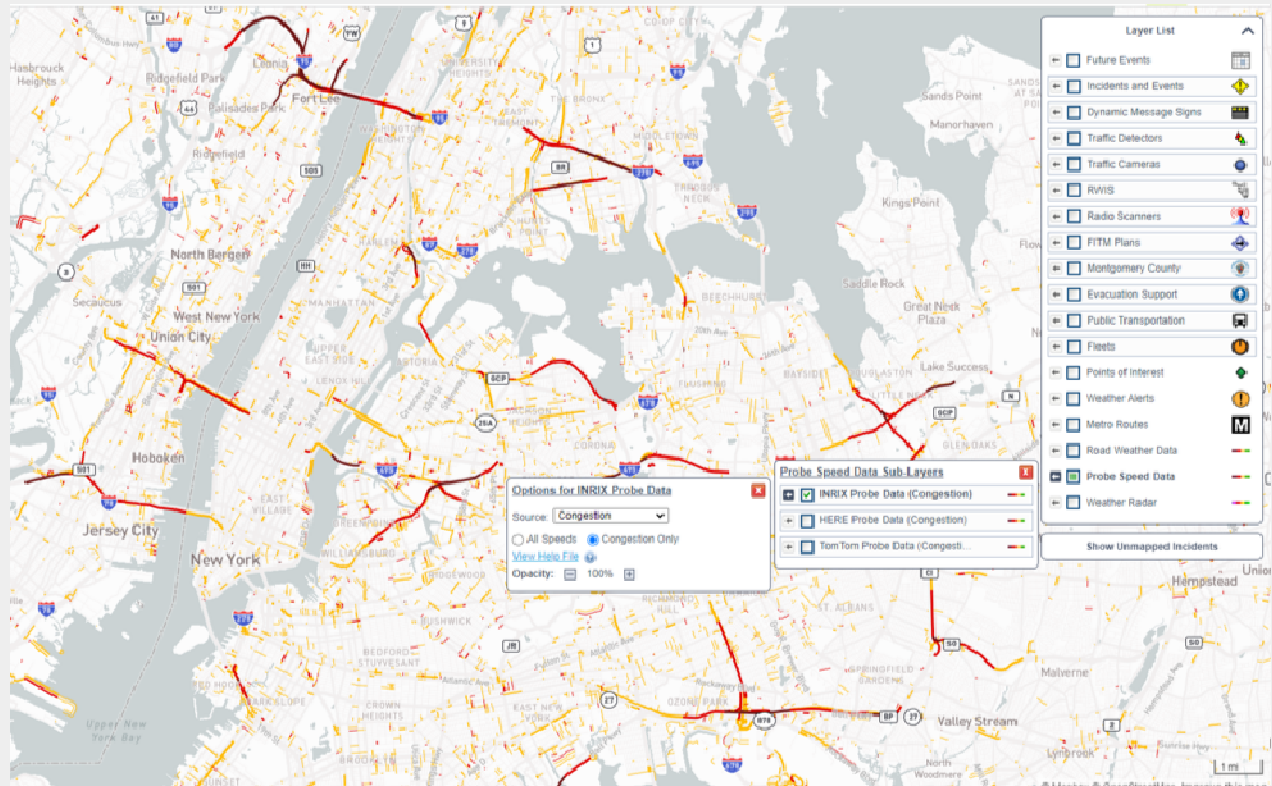
- [Presentation with Audio](#)
- [Slides Only](#)
- [Question & Answer Summary](#)

Rick Ayers of the University of Maryland's CATT Lab provided demonstrations during this workshop on how to use the following new tools in RITIS and PDA Suite:

- [Weather and Congestion Data Layers](#) within the Traffic Map tool
- [Route Selection Tool](#)
- [Corridor Speed Bins Tool](#)
- [Sharing Dashboards](#) within your organization

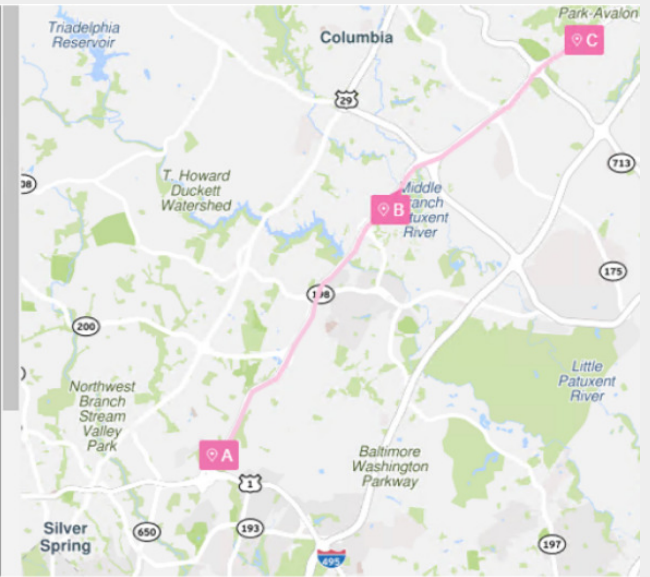
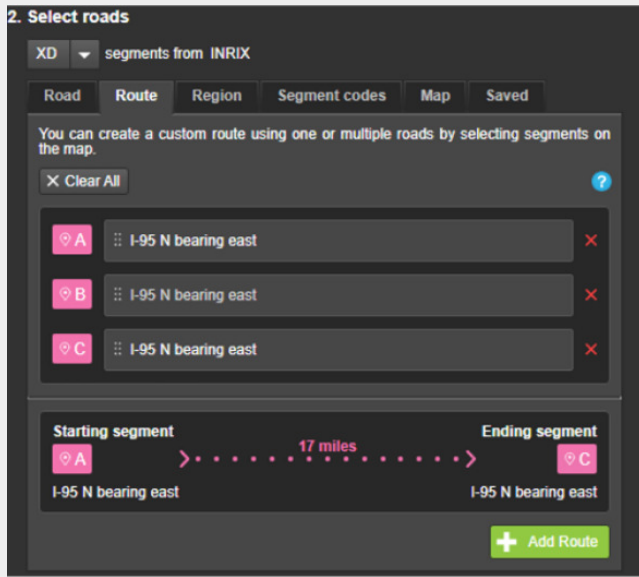
The **Traffic Map tool (below)** has two new layers for users – road weather data and a congestion traffic-only layer. The road weather layer is powered by [Nexrad](#). The data is real-time (updating every 3-5 minutes) and color-coded based on precipitation rate.

The congestion-only layers allow users to declutter their map views and focus on areas of high congestion. Other data layers that may help with this initiative include incidents and work zones.

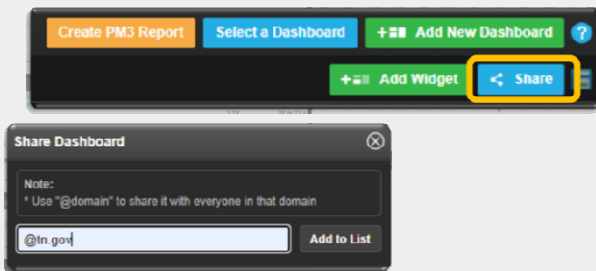
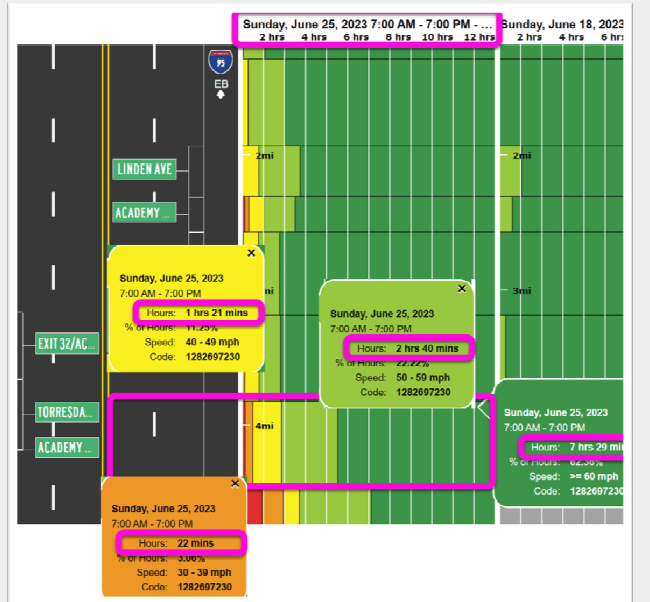


The **Congestion-only layer** helps users quickly identify congested locations (on the Layer List, click Probe Speed Data, then select your data provider and finally a metric and Congestion Only)

Next, Rick provided tips for using the **refined route selection tool (below)**. This tool can be used to define travel routes (e.g., a multi-road path from suburbs to city), not just individual roads. *This feature is currently available for XD data users only.*



The next spotlighted tool was the **Corridor Speed Bins (right)** that visualizes congestion measures by time spent at each speed on a stretch of road. Some uses of this tool include identifying delays along a corridor, excessive speed locations, probe speed readings for a selected date/time range, and work zone reporting of critical speeds for specific times of the day.



The **Dashboard sharing** tool (left) allow users to quickly share reports with fellow agency members without downloading reports multiple times. RITIS Users can share their reports with one member or an entire agency.

Find out about the latest improvements and enhancements to RITIS, PDA Suite and Trip Analytics by clicking on the links below.

Please note that access to the resources below may require logging into RITIS.

- <https://ritis.org/intro#>
- https://www.ritis.org/release_notes
- <https://pda.ritis.org/suite/updates/>
- <https://trips.ritis.org/new>

Agency Feedback

The CATT Lab team is always looking for ways to improve the RITIS platform and the PDA Suite. RITIS users can reach out at any time to the support team at support@ritis.org.



Update your Traffic Volumes:

The tools discussed provide more accurate results when **you** provide updated traffic volume data! Please contact Michael Pack (PackML@umd.edu) for more information on getting your newer data into the PDA Suite.

Transportation Data Marketplace

The Transportation Data Marketplace has six data sets and 11 vendors! Visit the [TDM page of the Coalition's website](#) for more information.

Follow the Coalition on social media and subscribe to be informed!

Recordings from many of the Coalition's web events are available on [TETC's YouTube channel - take a look.](#)

Follow the Coalition on [LinkedIn](#) to hear about upcoming events, collaborations, and industry news.

Upcoming Coalition Events – stay tuned for more information!

- RITIS User Group Web Meeting – February 1, 2024 – 1:00pm-2:30pm, ET – *more information to come!*

Questions or Comments:

TSMO Program: Sheryl Bradley at sbradley@tetcoalition.org

Logistics: Joanna Reagle at jreagle@kmjinc.com