



RITIS-PDA Suite User Group Follow-Up August 2019

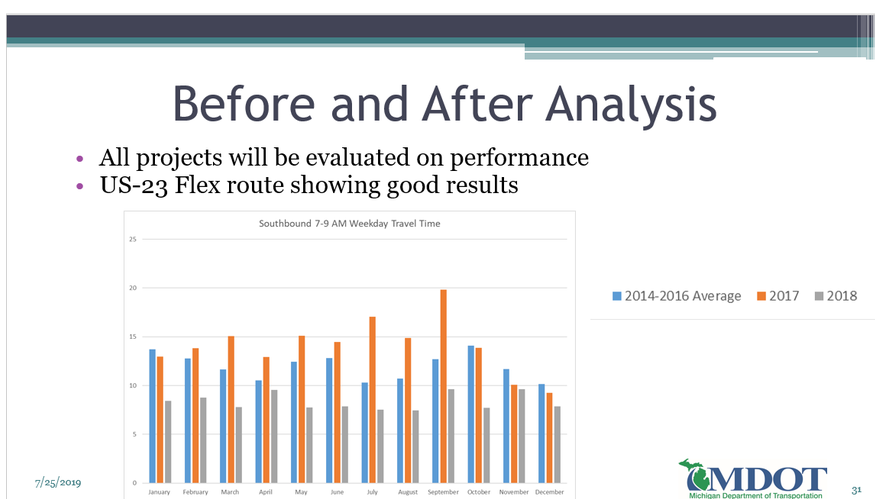
July 2019 User Group Meeting:

Thanks to those who participated in the RITIS-PDA Suite User Group meeting that was held on Thursday, July 25, 2019. Please visit the [RITIS or PDA page on the I-95 Corridor Coalition website](#) or click on the links below for more information about the meeting.

- [Presentation with Audio](#) (not a complete recording)
- [Slides only](#)
- [Q&A Summary](#)

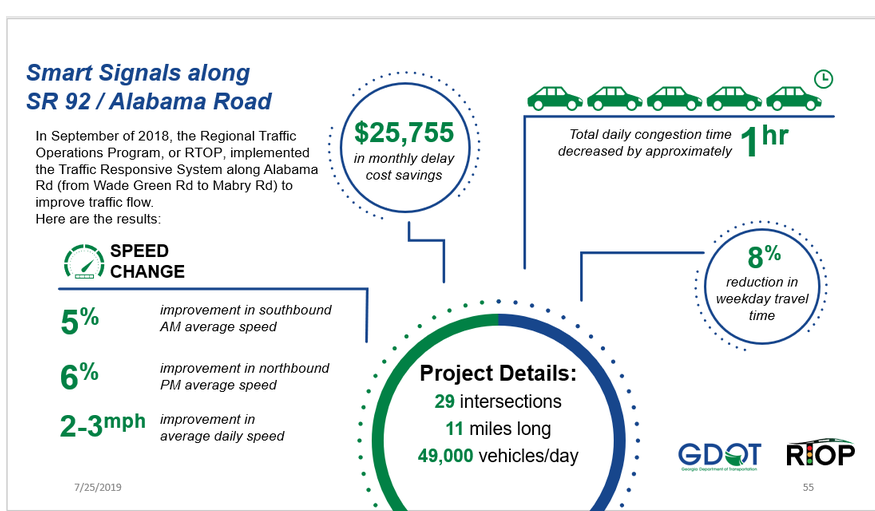
Prioritizing Project Selections for Operations within Michigan

Jason Firman, Congestion and Reliability Section Manager, Michigan DOT, gave the assembled group an overview of how Michigan DOT uses RITIS outputs to prioritize freeway and non-freeway projects. Michigan DOT will soon have \$50M annually available for freeway and non-freeway projects to meet their mobility goals. With numerous projects submitted for funding a screening method was developed to assess the projects. Reliability and operations performance measures (PMs) were part of the screening process. Each PM was given a point value and RITIS was used to gather the data needed to assess the score. Some of the PMs for both non-freeway and freeway scoring are: PTI (planning time index), TTI (travel time index), LOTTR (level of travel time reliability). A before and after analysis is completed for each project. The US-23 Flex route project shown below, has experienced favorable reduction in travel time upon completion of the improvements.



Using RITIS to support project prioritization in Georgia

Shahram Malek, PhD, PE, Vice President, ARCADIS for Georgia DOT, provided an overview of the extensive operations and performance reporting on arterials relative to the GDOT Regional Traffic Operations Program (RTOP). Usage ranges from real-time/live traffic monitored from the traffic operations center to performance measures related to impacts at the corridor level, holiday analysis and uses for social media. Below is a social media-based post demonstrating the value of traffic responsive signals.



What's New

Michael Pack, UMD CATT Lab, described the recent RITIS-Probe Data Analytics Suite deployments and enhancements. [Click here](#) to find out more about what's new in the RITIS-PDA Suite. (<https://pda.ritis.org/suite/updates/>)

Recent RITIS Deployments include

- New Transit Routes
- Added Illinois Sensor Data
- MassDOT joins RITIS
- New Volume updates for MD and VA
- Option for expanded NPMRDS/Full TMC Network coverage now visible
- New Tiling Infrastructure

- Major update for faster display and better reliability of RITIS maps and layers, especially on larger screens showing many layers.
- Smoother zooming transitions
- Paves the way for agency-specific tiles and reduces dependence on 3rd party mapping providers

WORK IN PROGRESS

- Bottleneck Ranking Modernization (Flash migration)
- Advanced Road Selection
- Detector Tools
- Timeline Media Redesign
- AARs in EQT
- Route Analysis in Trajectory Analytics
- Causes of Congestion
- Reliability Widgets
- Additional Transit Layers

LOOK OUT for the Next Use Group Meeting

To be held on October 3, 2019

Check the Coalition out on YouTube!

The I-95 Corridor Coalition has a YouTube channel. [Recording from many of the Coalition's webinars are available here – take a look!](#)

Questions or Concerns:

General Coalition or User Group Questions: Denise Markow at 301-789-9088 or dmarkow@i95coalition.org.
PDA Technical Support: UMD CATT Lab at vpp-support@ritis.org
RITIS Technical Support: support@ritis.org
Logistics: Joanna Reagle at 610-228-0760 or jreagle@kmjinc.com

Share this email:



[Manage](#) your preferences | [Opt out](#) using TrueRemove™

Got this as a forward? [Sign up](#) to receive our future emails.

View this email [online](#).

120 E.Lancaster Ave Suite 105
Ardmore, PA | 19003 US

This email was sent to .

To continue receiving our emails, add us to your address book.

[Subscribe](#) to our email list.