



RITIS-PDA Suite User Group Follow-Up

October 2019

Create Holiday Advisories using the PDA Suite

Yet another benefit! You can use the Probe Data Analytics Suite tools to help travelers better plan for a safer and less stressful trip this Thanksgiving holiday week.

Here is how to get started: First, you need to access the PDA Suite through your account. Next, go to the “Help” menu and select “Template” then choose “Holiday Travel Forecast.” Inside this folder you can find instructions to guide you and templates from both the UMD CATT Lab and Georgia DOT.

If this is your first time, “power users” suggest giving yourself four weeks to prepare the material and coordinate with the appropriate staff in your agency to get the word out. Please contact pda-support@ritis.org with any questions.



NEW VALIDATION REPORT AVAILABLE:

The 2019 “[Validation of Arterial Probe Data, Summary Report](#)” is complete and is now available on the Coalition website! This report provides an update to the 2015 arterial validation report, quantifies the accuracy of VPPI data across 13 additional arterial datasets and two additional vendors, and compares these results to the original VPPI case studies. These results indicate that probe data performance on arterials has improved since the original analysis in 2014. If you are interested in low volume roads, please see pages 25-27 for an explanation of improvements and limitations for these roadways. For questions, please contact Denise Markow (DMarkow@i95coalition.org).

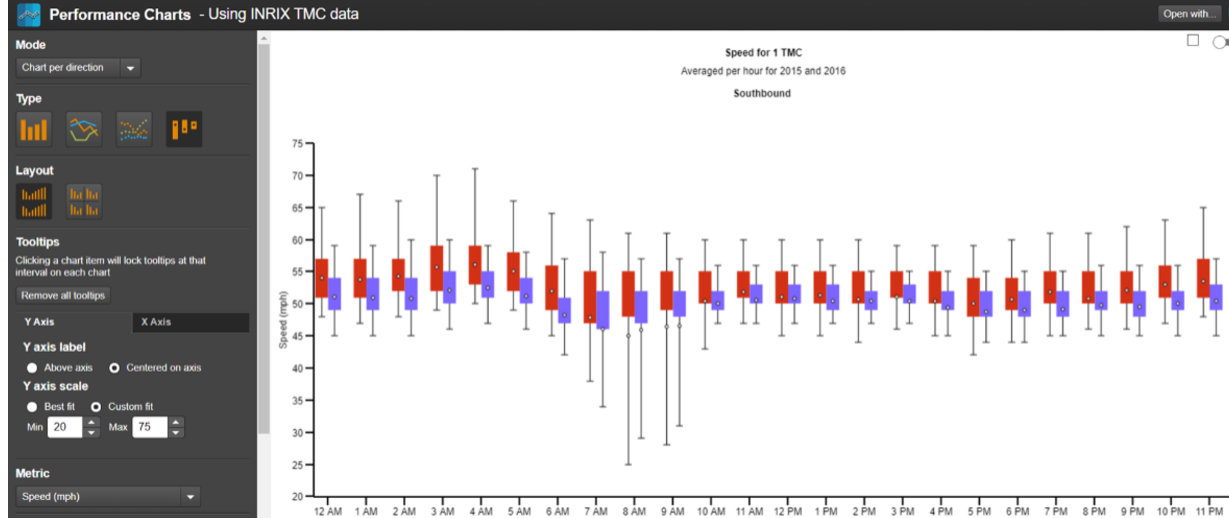
RITIS-PDA SUITE USER GROUP MEETING - October 2019

Thanks to those who participated in the RITIS-PDA Suite User Group meeting that was held on Thursday, October 3, 2019. Please click on the links below for more information about the meeting or visit the [RITIS & PDA page on the I-95 Corridor Coalition website](#).

- [Presentation with Audio](#)
- [Slides Only](#)
- [Q&A Summary](#)

Spotlight Presentation #1 – Data Enforced: An Exploratory Analysis on the Impacts of Automated Speed Enforcement in the District of Columbia

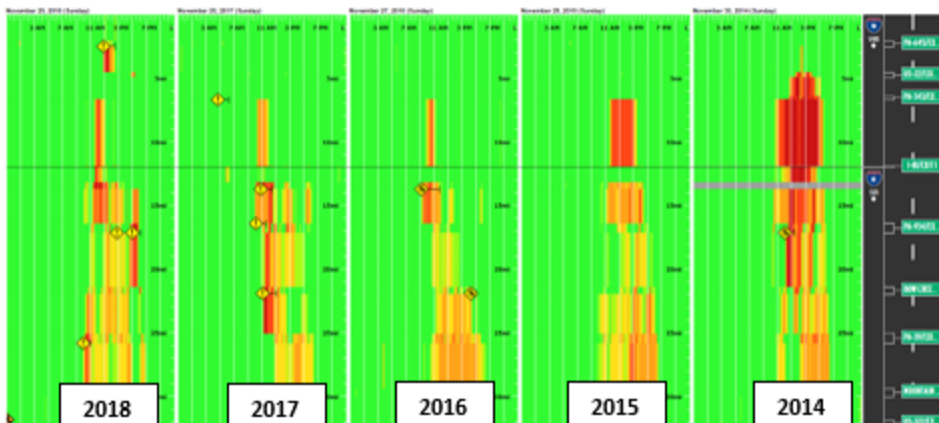
Awad Abdelhalim, Virginia Tech for District DOT, presented a recent study on the impacts of Automated Speed Enforcement (ASE) in achieving the District’s Vision Zero goals. Travel speeds acquired through the PDA Suite were used as part of this study to illustrate before and after speeds. The study found that the citation rate had decreased after installation of the ASE cameras. Below is a speed profile chart from the PDA Suite demonstrating the before and after speed distribution for one TMC segment.



Spotlight Presentation #2 – PennDOT: Using the PDA Suite for Holiday Travel: Operations and Traveler Information

Scott Benedict, Functional Architect for Pennsylvania DOT, explained how PennDOT has been using the PDA Suite during the last few years to help travelers understand the traffic patterns and avoid bottleneck locations for both Memorial Day and Thanksgiving. PennDOT uses Trend Maps, created in the PDA Suite, to illustrate traffic (via comparative speed) from the prior two years for each of their eight 511PA regions. After the initial set up, Scott noted that it takes about an hour to prepare this information for each holiday.

PennDOT has also used historical trend maps and congestion scans to identify ‘hot spots’ for potential improvements. As shown below, a Congestion scan illustrates the impact of encouraging an alternate route for a bottleneck location.

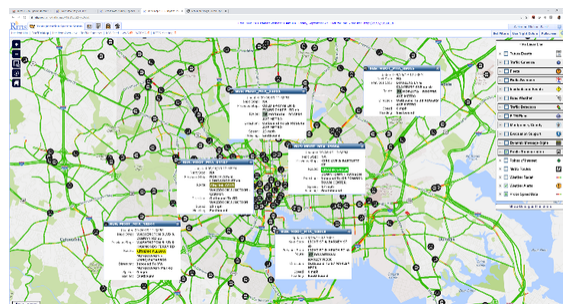


What’s New!

Michael Pack, UMD CATT Lab, described the recent RITIS-Probe Data Analytics Suite deployments and enhancements. [Click here](#) to find out more about what’s new in the RITIS-PDA Suite. (<https://pda.ritis.org/suite/updates/>)

Recent RITIS Deployments include

- Enhanced probe data density display and faster tiling
- Updated VDOT’s FTIM (Freeway Incident Traffic Management Plan) (contact Michael Pack if you would like your agency’s plans added)
- Bus Info – Vehicle locations, Bus Heading, Routes, Stops – or any combination of this information displayed simultaneously
- Event Query Tool “heatmapping” changes to allow fixed clustering
- New Arterial Signal Analytics features – updated visualizations (scatterplot and delta chart) provide a different way to new signal performance measures.
- Reliability Dashboard Widget
- Bottleneck Ranking modernization – view up to five visualizations at the same time
- Time zone Selection
- And many other XD improvements



Work in Progress

- Advanced Road Selection
- Detector Tools
- AARs in Event Query Timeline
- Route Analysis in Trajectory Analytics
- Causes of Congestion
- Event/Incident Dashboard Widgets
- Additional Transit Layers

UPDATE YOUR TRAFFIC VOLUMES!

The tools provide more accurate results when you provide your updated traffic volume data! Please contact Michael Pack (PackML@umd.edu) for more information on getting your newer data into the PDA Suite.

Check out the Coalition on YouTube!

The I-95 Corridor Coalition has a YouTube channel. Recording from many of the Coalition’s webinars are available [here](#) – take a look!

LOOK OUT for upcoming Coalition sponsored meetings

- November 13, 2019 – Ubiquitous Traffic Volume from Probe Data Project Meeting
- November 21, 2019 – TDADS (Transportation Disruption and Disaster Statistics) Meeting
- February 6, 2020 – RITIS-PDA Suite User Group Web Meeting



Questions or Concerns:

General Coalition or User Group Questions: Denise Markow at 301-789-9088 or dmarkow@i95coalition.org.

PDA Technical Support: UMD CATT Lab at ypp-support@ritis.org

RITIS Technical Support: support@ritis.org

Logistics: Joanna Reagle at 610-228-0760 or jreagle@kmjinc.com

Share this email:



[Manage](#) your preferences | [Opt out](#) using TrueRemove™

Got this as a forward? [Sign up](#) to receive our future emails.

View this email [online](#).

120 E.Lancaster Ave Suite 105
Ardmore, PA | 19003 US

This email was sent to .

To continue receiving our emails, add us to your address book.

[Subscribe](#) to our email list.