



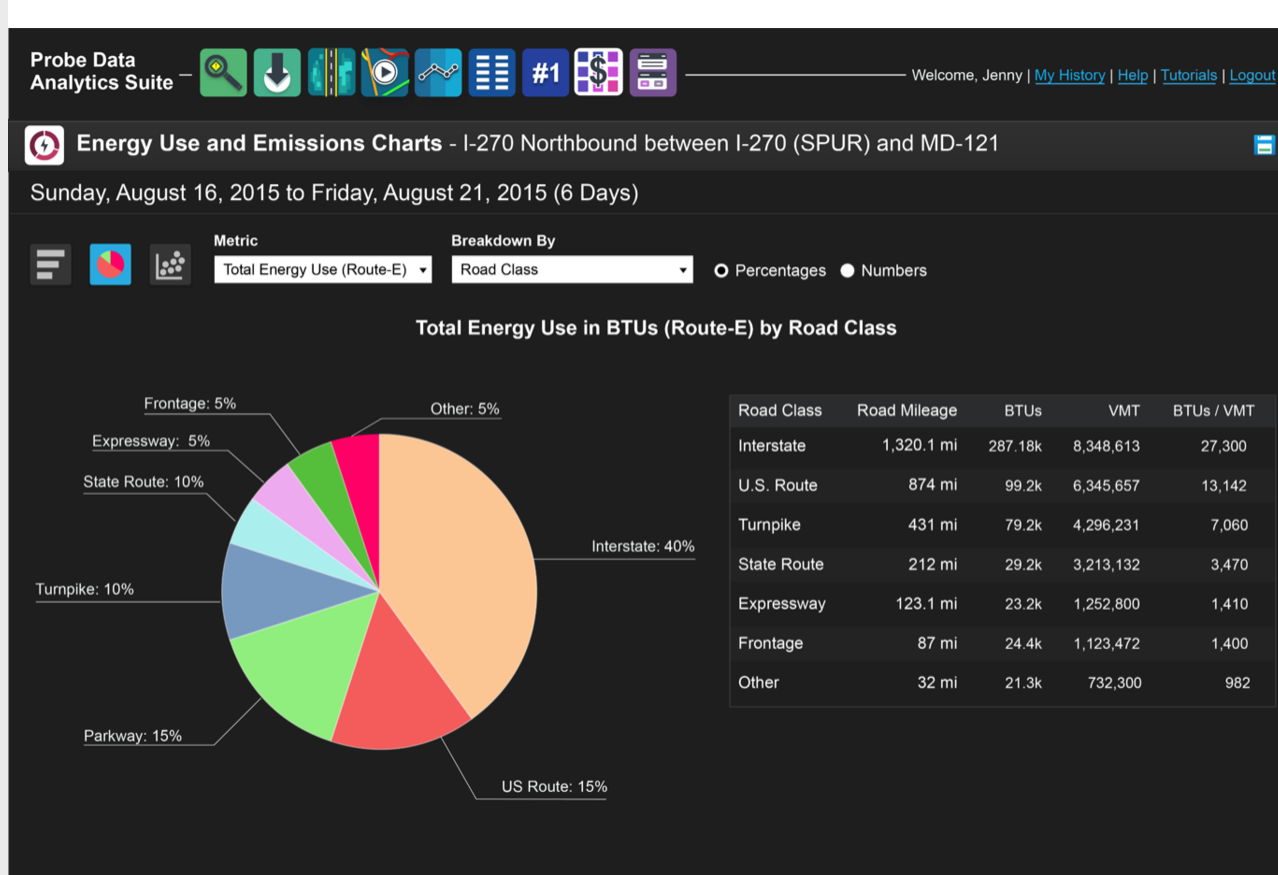
## RITIS User Group Web Meeting Follow-Up - March 2021

Thanks to those who participated in the RITIS User Group Web Meeting on February 11, 2021. Please click on the links below for more information about the event or visit the User Group Tab on the RITIS section of the Coalition's website (<https://tetcoalition.org/projects/ritis-pda-suite/>).

- [Slides Only](#)
- [Question & Answer Summary](#)

### Spotlight Presentation: Transportation Energy Analytics Dashboard (TEAD)

Mark Franz of the University of Maryland CATT Lab and Stan Young of the National Renewable Energy Lab (NREL) explained how TEAD will be integrated with RITIS to bridge the gap between transportation planning and analyzing greenhouse gas emissions. This integration will help answer questions such as "Will state-level policy goals for electric vehicles have an impact on GHG?", "How do we track EV uptake and its impact on emissions?", and much more. The TEAD objectives and impacts were explained including the creation of an online tool to measure and visualize transportation energy end emissions metrics. Mark gave a demonstration of the TEAD tools, including the Energy Use and Emissions Matrix (pictured below), an emissions trend map, vehicle ownership charts, and more. TEAD is sponsored by the Department of Energy-Vehicle Technology Office. Project partners include the CATT Laboratory, NREL, Metropolitan Washington Council of Governments, Mid-Ohio Regional Planning Commission, and the Maryland Transportation Institute. The team is working on giving Coalition members access to TEAD and are pursuing enhancement funding. For more details regarding Transportation Energy Analytics, [check out this brief write-up](#).



Energy Use and Emissions Chart example

### New RITIS Product Enhancement Working Group

Matt Glasser of Georgia DOT introduced the RITIS Product Enhancement Working Group. This group will work together to gather funds that will speed up the process of adding features to RITIS. The goal is to create a framework that allows the group to find common needs and have the platform upgraded quickly, for the functionality that is of most interest to the group. **Staff from member agencies who are interested in joining this group should contact Matt Glasser ([mglasser@dot.ga.gov](mailto:mglasser@dot.ga.gov), 404.635.2838).**

### What's New in RITIS!

Michael Pack described the recent RITIS-Probe Data Analytics Suite deployments and enhancements. To find out more about what's new in the RITIS Platform, visit the "What's New" section of each major platform area:

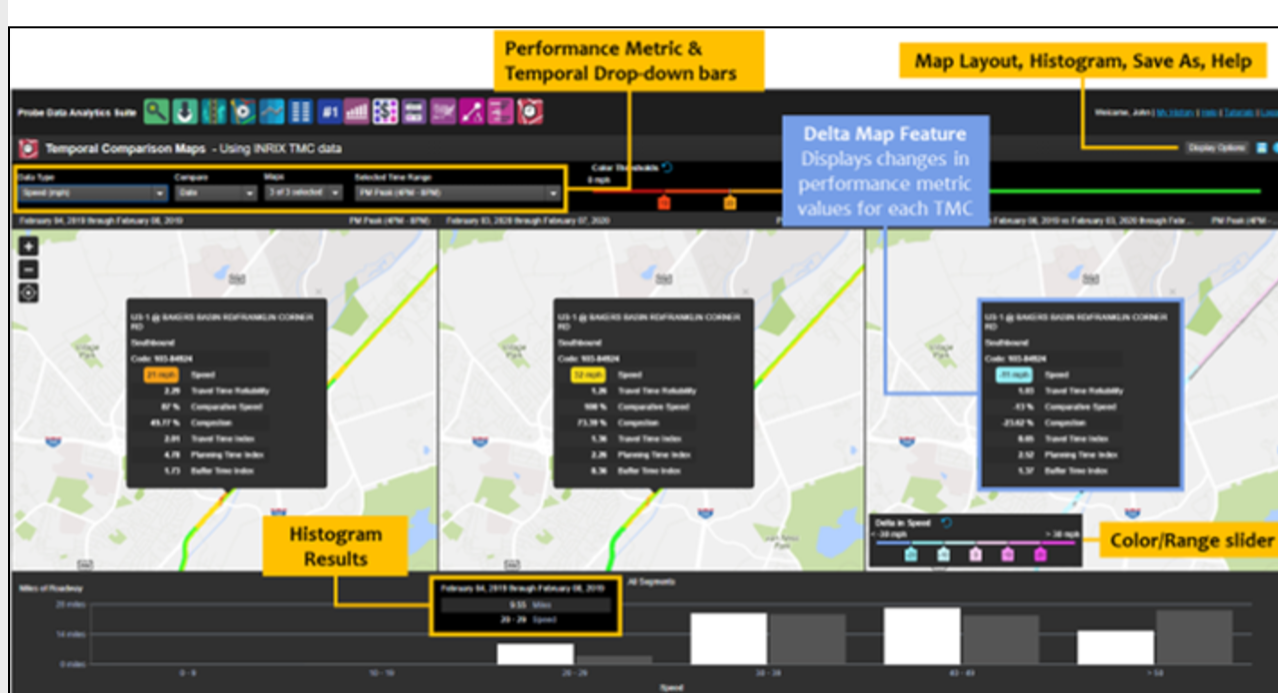
- [https://www.ritis.org/release\\_notes](https://www.ritis.org/release_notes)
- <https://pda.ritis.org/suite/updates/>
- <https://trips.ritis.org/new>

### Recent RITIS Updates Include:

- A feature for administrative power users to easily filter and close active events
- Additional video tutorials added to <https://www.ritis.org/tutorials/>
- New data source selection interface added to the Event Query Tool
- WZPMA Current Conditions pane have been improved on single direction road segments
- Keep up with current user stories and innovative new solutions from the CATT Lab by [subscribing to RITIS Report](#), their quarterly newsletter. Checkout the [Winter Edition here](#).

### PDA Suite Updates Include:

- Release of the Energy Use and Emissions Tools
- Temporal Comparison Maps allow you to analyze changes in conditions for up to seven different time periods
- Various small enhancements and minor bug fixes
- As of March 9, 2021, the **Probe Data Analytics Suite will not support Internet Explorer**



A showcase of the NEW Temporal Comparison Maps

### Other Updates Include:

- Ability to define a custom analysis area by uploading a GeoJSON file for Trip Analytics
- New Help pages clearly explain widgets and functions

### What's in Development (for PDA Suite):

- Developing a space on PDA Suite to house Performance Reporting Templates
- Access and download Report Templates, How-to Guides & DesignSheets, and view agency use cases, all in one location

### Agency Feedback Session

During the web meeting, Michael Pack of the University of Maryland CATT Lab asked participants questions to gather information on enhancements and issues regarding RITIS and PDA-Suite. RITIS users can reach out at any time to the support team at [support@ritis.org](mailto:support@ritis.org). The CATT Lab team is always looking for ways to improve the RITIS platform and the PDA Suite in particular.



### Update Your Traffic Volume Data:

The tools discussed provide more accurate results when you provide updated traffic volume data! Please contact Michael Pack ([PackML@umd.edu](mailto:PackML@umd.edu)) for more information on getting your newer data into the PDA Suite.

### Traffic Data Marketplace (formerly known as VPPIII)

The Eastern Transportation Coalition's Traffic Data Marketplace (ETC TDM) is coming! With the current VPP contract set to expire in 2022, the Coalition is working on getting the ETC TDM operational within the next year, with data, ancillary products, and more. Stay tuned!

### Upcoming Coalition Events:

- Traveler Info Services Virtual Summit – April 1, 2021 - [register here!](#)
- RITIS User Group Web Meeting – May 6, 2021 - more information to come!

### Follow the Coalition on YouTube and subscribe to be informed!

The Coalition has a YouTube channel. Recordings from many of the Coalition's webinars are available [here - take a look!](#)

### Questions or Comments:

**General Coalition:** Denise Markow at 301.789.9088 or [dmarkow@tetcoalition.org](mailto:dmarkow@tetcoalition.org)  
**Logistics:** Joanna Reagle at 610.228.0760 or [jreagle@kmjinc.com](mailto:jreagle@kmjinc.com)

Share this email:



[Manage](#) your preferences | [Opt out](#) using TrueRemove™

Got this as a forward? [Sign up](#) to receive our future emails.

View this email [online](#).

120 E. Lancaster Ave Suite 105  
Ardmore, PA | 19003 US

This email was sent to .

To continue receiving our emails, add us to your address book.

[Subscribe](#) to our email list.