

THE EASTERN TRANSPORTATION COALITION

CONNECTING FOR SOLUTIONS



RITIS-PDA Suite User Group Follow Up May 2020

RITIS-PDA Suite User Group Meeting - May 7, 2020

Thanks to all who participated in the RITIS-PDA Suite User Group web meeting that was held on Thursday, May 7, 2020. Please click on the links below for the meeting materials, or visit the User Group tab located on the [RITIS and PDA page](#) on the I-95 Corridor Coalition website.

- [Presentation with Audio](#)
- [Slides Only](#)
- [Question & Answer Summary](#)

Spotlight Presentation #1 - Leveraging the new "Trip Analytics" to Better Understand Truck Trip Origins & Destinations within Rhode Island

Josh O'Neil and Ben Jacobs, Rhode Island Division of Statewide Planning, Department of Administration, explained how Rhode Island is currently using the Trip Analytics, a separate tool within RITIS, to better understand the origins and destinations of major freight generators within their state. Specifically, they focused on the differences between heavy and medium truck patterns to determine regions in the state that should be studied further. Ben explained the methodology they used to create heat maps for the various destinations and weight classes. He described the various issues they encountered and how they addressed them to get their results. Josh described the initial outcomes from the analyses highlighting various locations and freight generators associated with each. They explained their anticipated next steps including additional refinement of the data, further use of the Trip Analytics, and continued outreach to local planners and to the freight industry operators.



Providence Freight Generators

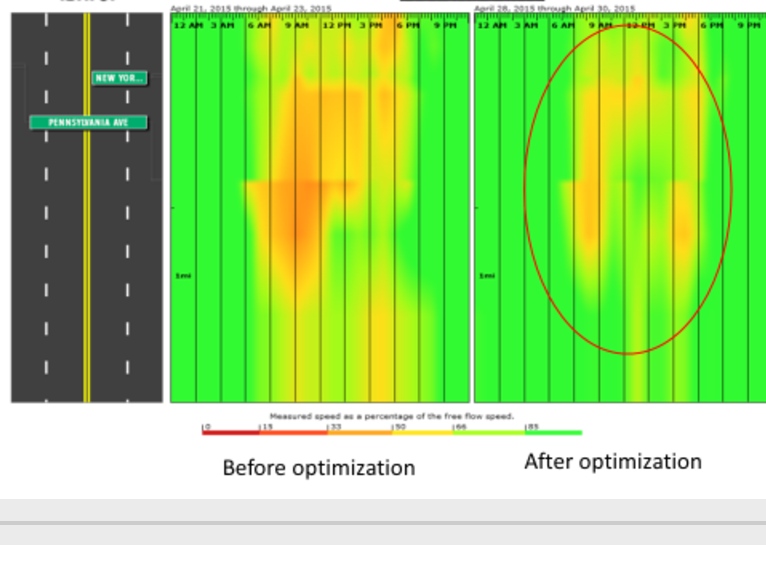
<http://www.planning.ri.gov/planning-areas/transportation/freight-scans.php>

- 1) Port of Providence
- 2) United States Postal Service
- 3) Coca Cola Bottling Company

Spotlight Presentation #2 - Probe Data Analytics Applications for Evaluating Operations and Safety in Washington, DC

Tom Knofczynski, Sabra & Associates/Mead & Hunt (District DOT), explained the numerous ways that they are using the PDA Suite tools to assist the District DOT including citizen requests, assessing signal timing changes, and monitoring traffic changes due to COVID-19. Tom described a citizen concern over a recent signal timing change that was easily investigated, validated, and resolved using the PDA Suite tools and without any additional data collection. He also provided an example of how the travel time graphics from the Performance Charts tool in the PDA Suite were used to illustrate the impacts of signal retiming. He explained that more recently the tools were being used to assess the impact of adding Leading Pedestrian Intervals (LPIs) to traffic signals in the District. The PDA Suite (specifically the Performance Chart tool) is also being used to compare traffic volumes during the COVID-19 pandemic and subsequent travel restrictions.

Downtown Results – VPP Congestion



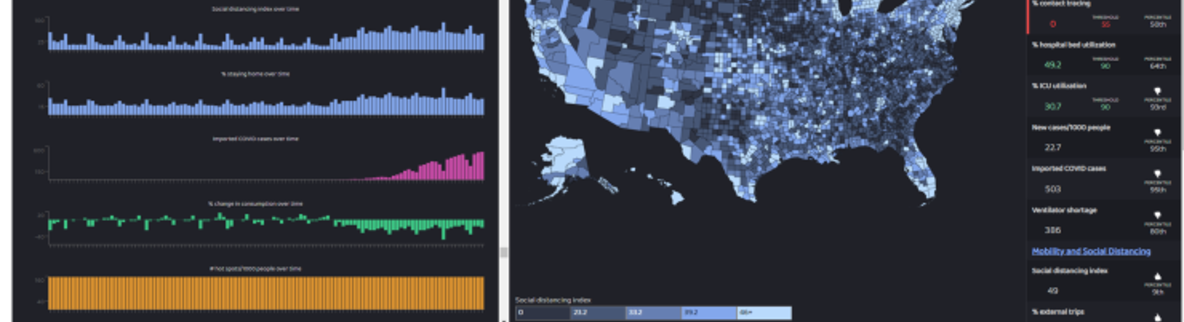
Significantly reduced queuing and increased speeds noted during 'after' AM, Midday and PM period

What's New in Development!

Michael Pack, UMD CATT Lab, described the recent RITIS-Probe Data Analytics Suite deployments and enhancements. [Click here](#) to find out more about what's new in the RITIS-PDA Suite. Michael noted that webinars on some of these new features are being planned so that more time can be spent explaining the tools and answering questions.

- **RITIS Tutorials** for Probe Data Analytics Dashboard, Signal Analytics Intersection Analysis, RITIS Event Query Tool, RITIS Map, After Action Review of the Woodrow Wilson Bridge Incident, Arterial Signal Performance Measures Demo, RITIS 101, AASHTO MAP-21 Tutorials, and Work Zone Performance Monitoring Application
- **Causes of Congestion** - updated "Congestion Pie Charts" are now live for MD and CO - with additional states going live later this year
- **COVID-19 Analytics** - <https://data.covid.umd.edu/> (publicly available). Developed in conjunction with the Maryland Transportation Institute for each state (and county) providing health, economic impact, and vulnerable populations.
- **Route Analytics** (and major speed improvements)
- **Signal Analytics** - new - provides signal operational information for selected time period without the field hardware
- **Detector Tools** Modernization

COVID-19 Analytics



What's Development:

- User Delay Cost Updates/Improvements/Standardization
- New COVID-19 Mobility Impact Metrics, Analytics and Visualizations
- Advanced Road Selection
- Detector Tools (Graphing and Road Profiles)
- AARs in Event Query Tool (EQT)
- Screen and Cordon Lines in Route Analysis
- Reporting Tutorials

Work in Progress - We need your help!

John Allen, UMD CATT Lab, provided an update on the Performance Summary Reports being developed by the CATT Lab. The types of reports were reviewed as well as sample formats. The CATT Lab is looking to engage the **Performance Measure Summary Report Focus Group** for feedback and further refinement of the reports and guides. **Staff from member agencies who are interested in participating in this focus group should contact John Allen (jallen35@umd.edu, 215.666.3057).**

Building a Performance Summary Report

B/A Before & After Study

Decide on a layout

Define the overall look and feel of your document.

Add your information

Select the data, graphics, images and text that best tells your story.

Share your report

Distribute your finished product to inform, help make a decision, meet a requirement or promote an action.

Backlog Prioritization and Funding - We need to hear from you!

Michael Pack explained that they receive numerous requests for features. Some agencies directly fund enhancements that are then made available to the other participating members. At the next meeting, the CATT lab will review the requests that have been received and (if known) the anticipated costs. They are looking for input and guidance from the RITIS and PDA Suite users. Please plan to participate in this meeting!

Update Your Traffic Volumes!

The tools provide more accurate results when you provide your updated traffic volume data! Please contact support@ritis.org for more information on getting your newer data into the PDA suite.

VPP Marketplace Updates

Additional products by each of the current vendors (HERE, INRIX and TomTom) were highlighted. If you would like more information, please contact Denise Markow.

In addition to the RITIS-COVID-19 Impacts platform mentioned above, current VPP vendors are providing information to the public on the impacts of COVID-19 on travel. Here are a couple of examples:

- INRIX - <https://inrix.com/blog>
- TomTom - https://www.tomtom.com/en_gb/traffic-index/philadelphia-traffic

VPP III is coming in the summer of 2021. With the current VPP contract set to expire in 2022, the Coalition is working on getting VPP III operational by July 1, 2021, with data, ancillary products, and agencies to staff the Steering Committee. Stay tuned!

Upcoming Coalition Sponsored Meetings

- May 28, 2020 - TSMO Webinar - Protecting Our Infrastructure - Tunnel Management and WIM's - [register here](#)
- June 17, 2020 - New Technologies providing Traveler Information (web meeting) - [register here](#)
- Summer 2020 - RITIS-PDA Suite User Group (web meeting)

FLIPPING THE SWITCH:

On July 1, 2020, the I-95 Corridor Coalition will officially become The Eastern Transportation Coalition.

The Coalition is pleased to announce that Tennessee and Alabama are the newest members of the Coalition!



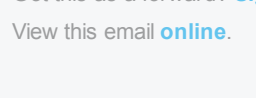
Follow the Coalition on YouTube and subscribe to be informed!

The Coalition has a YouTube channel. Recordings from many of the Coalition's webinars are available [here - take a look!](#)

Questions or Comments:

General Coalition: Denise Markow at 301.789.9088 or dmarkow@i95coalition.org
Logistics: Joanna Reagle at 610.228.0760 or jreagle@kmjinc.com

Share this email:



Manage your preferences | [Opt out](#) using TrueRemove™
 Got this as a forward? [Sign up](#) to receive our future emails.
 View this email [online](#).

120 E.Lancaster Ave Suite 105
 Ardmore, PA | 19003 US

This email was sent to .
 To continue receiving our emails, add us to your address book.

[Subscribe](#) to our email list.