

RITIS User Group Web Meeting Follow-Up

November 2022

Help Improve
RITIS

Transportation
Data
Marketplace

Update Your
Traffic
Volumes

Upcoming
Coalition
Events

Thanks to those who participated in the RITIS User Group Web Meeting on October 20, 2022. Please click on the links below for more information about the event or visit the User Group tab on the RITIS page of the Coalition website (<https://tetcoalition.org/projects/ritis-pda-suite/>).

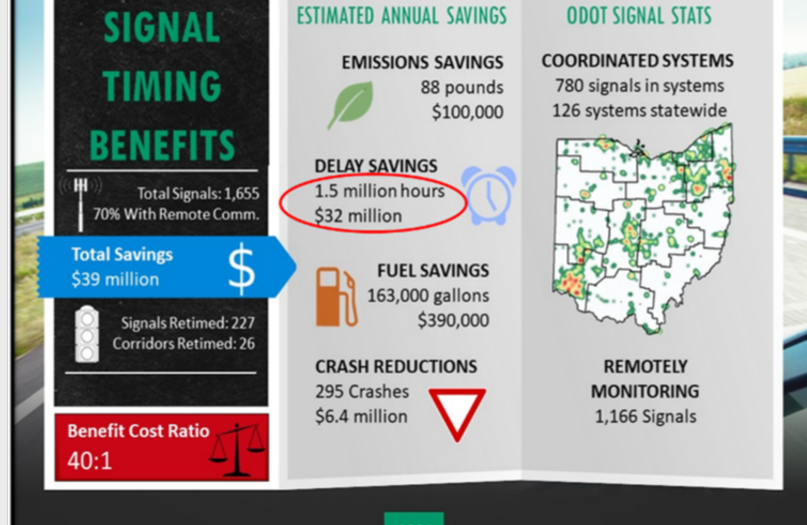
- [Presentation with Audio](#)
- [Slides Only](#)
- [Question & Answer Summary](#)

Please note: Access to the resources linked below may require logging into your RITIS account.

Spotlight Presentation: Ohio DOT's use of RITIS for Travel Time Comparison and Travel Time Delta Ranking

Charlie Fisher of Ohio DOT presented how they use several RITIS tools as part of ODOT's Signal Retiming Program. First, ODOT uses the PDA Region Explorer to help choose which corridors to study. They use the Travel Time Delta Ranking to evaluate and prioritize candidate corridors and then monitor real-time performance via the PDA Dashboard. Finally, the Signal Analytics tool is used to investigate issues at individual intersections.

The use of these tools provides ODOT with time/resource savings (shown below) and helps communicate plans by showing visuals of rankings.



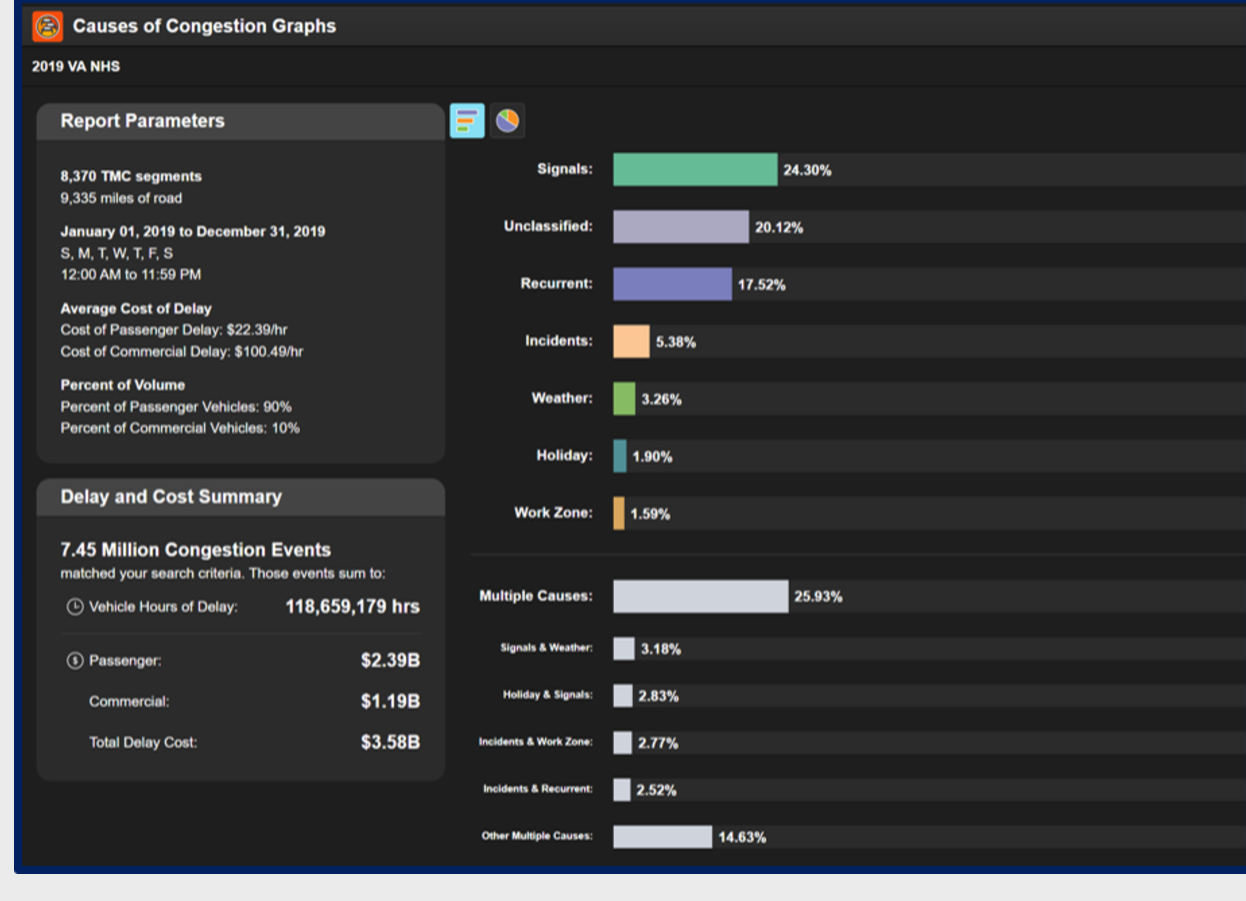
Causes of Congestion Tool Update

Mark Franz of the University of Maryland CATT Lab provided an update on the Causes of Congestion tool. Users can now enable monthly breakdowns of national, state, and county causes of congestion. Coverage of the National Highway System (NHS) has also been increased (a breakdown by the state is included in the presentation). Future updates for the Causes of Congestion tool may include enhanced spatial and temporal coverage, including agency incident and work zone data and customized analysis.

Mark also demonstrated the following use cases for the Causes of Congestion tool:

- How does the addition of agency incident and WZ data change the results?
- How do results differ when I filter for weekdays and daylight hours (7am-7pm)?
- What is the underlying cause of congestion for the top interstate bottleneck in Massachusetts?

Step-by-step instructions for these use cases can be found in the [webinar recording](#) and [presentation](#).



PDA Suite Performance Measures Working Group Update

John Allen of the University of Maryland CATT Lab reviewed the progress of the PDA Suite Performance Measures Working Group. The Top 10 Bottlenecks report discussed at the last meeting is now available on the [RITIS Report Templates page](#). At the next meeting, members will review the Holiday Travel Forecast template package content and discuss a Work Zone templates package.

Staff from member agencies who are interested in reviewing these templates should contact John Allen (jallen35@umd.edu) or Rick Ayers (rayers@umd.edu).

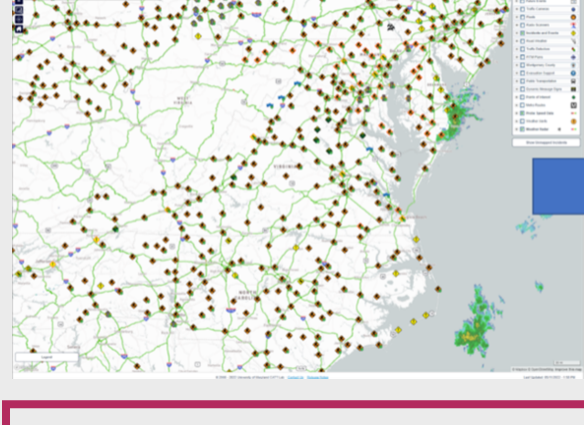
REGISTER NOW: A RITIS Workshop detailing how to use After Action Report Templates will be held on November 17, 2022, from 1:00pm-2:15pm, ET. You can register for this workshop at: <https://t.e2ma.net/click/8kftax/s4br02cc/cwmlv7f>



RITIS Product Enhancement Working Group Update

Bob Frey of Massachusetts DOT provided an update on the Product Enhancement Working Group. He listed the group's Enhancement Priorities through June 2023, including the ability to share dashboards and templates outside of the RITIS platform. The Satellite/ Aerial Imagery in RITIS Maps enhancement (below) was deployed on September 20, 2022.

The next meeting of this working group is scheduled for December 1, 2022, which will include designing the Automated Work Zone Reporting tool. Staff from agencies who are interested in joining this group should contact Bob Frey (bob.frey@dot.state.ma.us) and Michael Pack (PackML@umd.edu)



Want to share how your agency uses the RITIS PDA Suite?

We'd like to thank Charlie Fisher (ODOT) for his presentation. Does your agency have a RITIS use case to share with others? The Eastern Transportation Coalition would like to highlight how agencies use the RITIS tools. Please contact John Allen (jallen35@umd.edu) or Rick Ayers (rayers@umd.edu) to discuss sharing your use case.

What's New in RITIS!

Michael Pack of the University of Maryland CATT Lab described the recent RITIS-Probe Data Analytics Suite deployments and enhancements. To find out more about what's new in the RITIS Platform, visit the "What's New" section of each major platform area:

- https://www.ritis.org/release_notes
- <https://pda.ritis.org/suite/updates/>
- <https://trips.ritis.org/new>

Recent RITS updates include:

- Traffic Map - Added the ability to change the base map to satellite imagery on RITIS TrafficMap and [TrafficView](#) maps.
- Added the [Causes of Congestion Graphs](#) to the [RITIS Tool Catalog](#)
- Various Data Source Updates
- Added an FAQ to TrafficView explaining that CCTV video is not recorded

Probe Data Analytics Suite Updates:

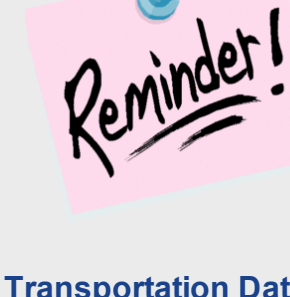
- Added support for HERE Topology Subsegments (TS) to the Massive Data Downloader
- All RITIS/PDA states now have access to Causes of Congestion Graphs (now with ten new states)
- NPMRDS data is now updated weekly
- Updated the popup for roadway incidents in Trend Map, Region Explorer, and Bottleneck
- Ranking to include the associated segment code
- Enhanced the quality of error logging to improve RITIS customer support
- Began working on road selection by map click (start and end point)

Signal Analytics Tool

- Added 43 new optional metrics to the Intersection Analysis results table

Agency Feedback Session

The CATT Lab team is always looking for ways to improve the RITIS platform and the PDA Suite in particular. RITIS users can reach out at any time to the support team at support@ritis.org.



Update Your Traffic Volume Data:

The tools discussed provide more accurate results when **you** provide updated traffic volume data! Please contact Michael Pack (PackML@umd.edu) for more information on getting your newer data into the PDA Suite.

Transportation Data Marketplace

The Transportation Data Marketplace went live on July 1, 2022, with six data sets and 12 vendors! Visit the [TDM page of the Coalition's website](#) for more information.

Upcoming Coalition Events – stay tuned for more information!

- RITIS Workshop #3 - After Action Templates - Nov. 17, 2022 – [register here!](#)
- NHTS Next Gen Webinar - Jan. 26, 2023
- RITIS User Group Meeting - Feb. 2, 2023

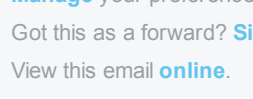
Follow the Coalition on YouTube and subscribe to be informed!

The Coalition has a YouTube channel. Recordings from many of the Coalition's webinars are available [here - take a look!](#)

Questions or Comments:

General Coalition: Denise Markow at 301.789.9088 or dmarkow@tetcoalition.org
Logistics: Joanna Reagle at 610.228.0760 or jreagle@kmjinc.com

Share this email:



Manage your preferences | Opt out using TrueRemove™

Got this as a forward? Sign up to receive our future emails.

View this email [online](#).

120 E. Lancaster Ave Suite 105

Ardmore, PA | 19003 US

This email was sent to .

To continue receiving our emails, add us to your address book.

[Subscribe](#) to our email list.