

RITIS Workshop

Integrating RITIS Probe Data Analytics and GIS for CMP Report Visualizations
February 25, 2025

Upcoming RITIS Events!



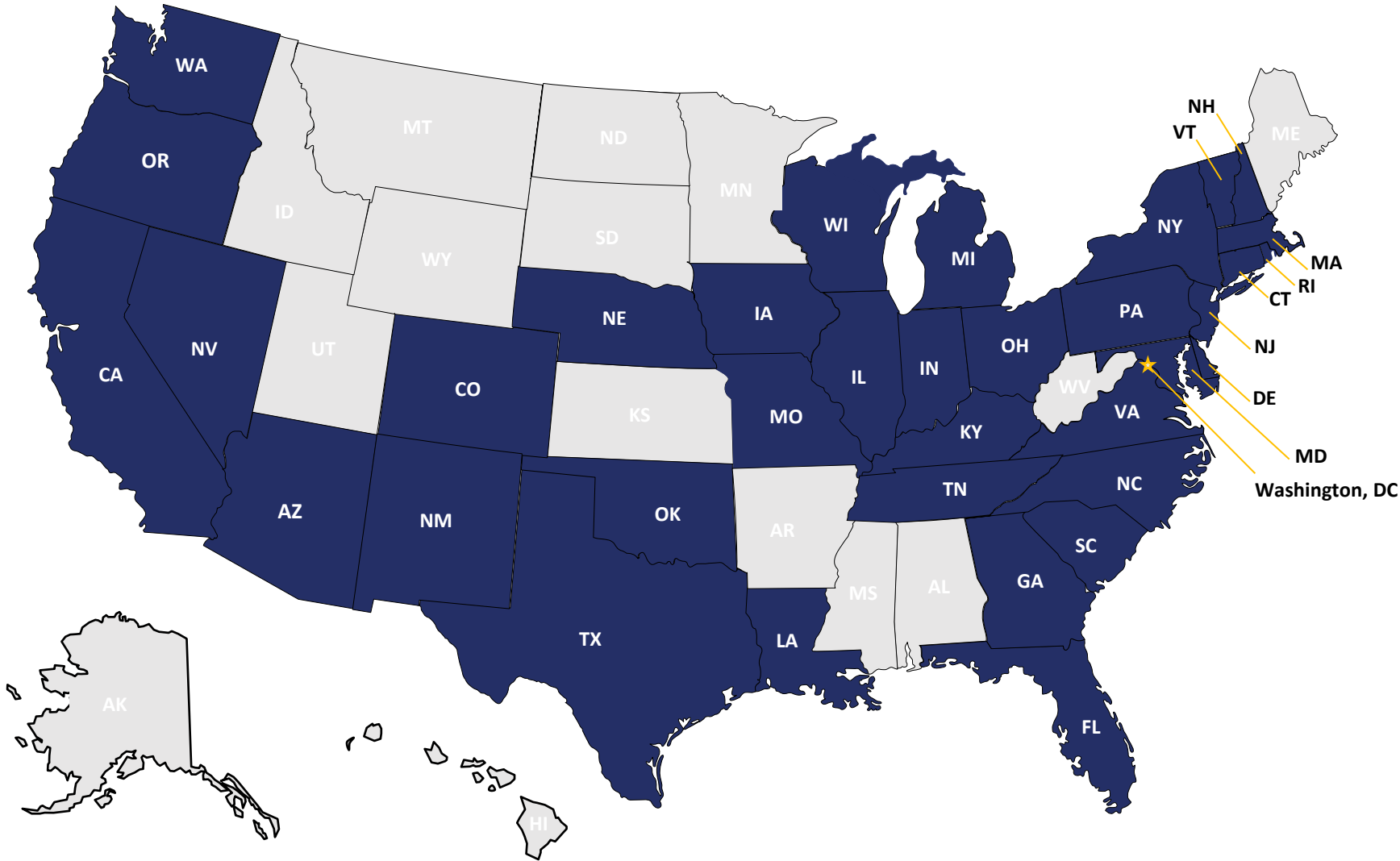
Nicole Forest

The Eastern Transportation Coalition
TSMO Program Associate

| Event | Date |
|------------------------------|-------------|
| RITIS User Group Web Meeting | May 1, 2025 |



Welcome to our Meeting Participants



35 States are participating in today's virtual event!

- DOTs
- MPOs
- Transportation Authorities
- Federal Agencies
- Local Agencies
- Universities

Today's Speaker



Rick Ayers
UMD CATT Lab
Public Sector Advocate



In the spotlight...

Using RITIS Probe Data Analytics and GIS for CMP Reports -

Rick Ayers

Public Sector Advocate



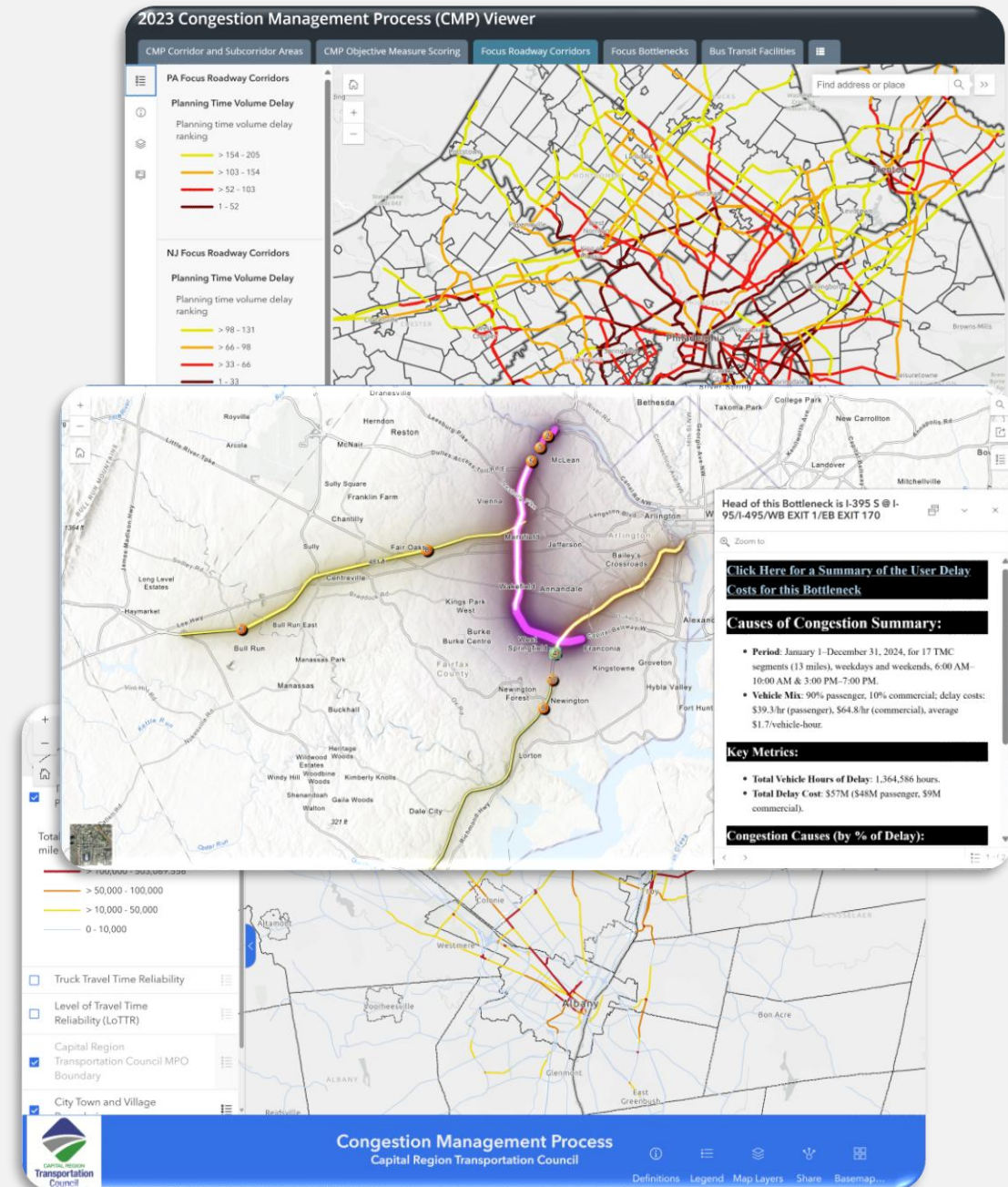
Background

RITIS Probe Data Analytics - Benefits

- World's largest mobility performance measures archive
- Easy to use GUI for querying vast amounts of spatial and temporal performance measures data
- Terrific data visualizations

ArcGIS Online - Benefits

- Mostly ubiquitous access for state DOTs and their partner agencies
- Web based solution as a service is very easy to work with
- Many out of the box templates for creating online content to TELL YOUR STORY



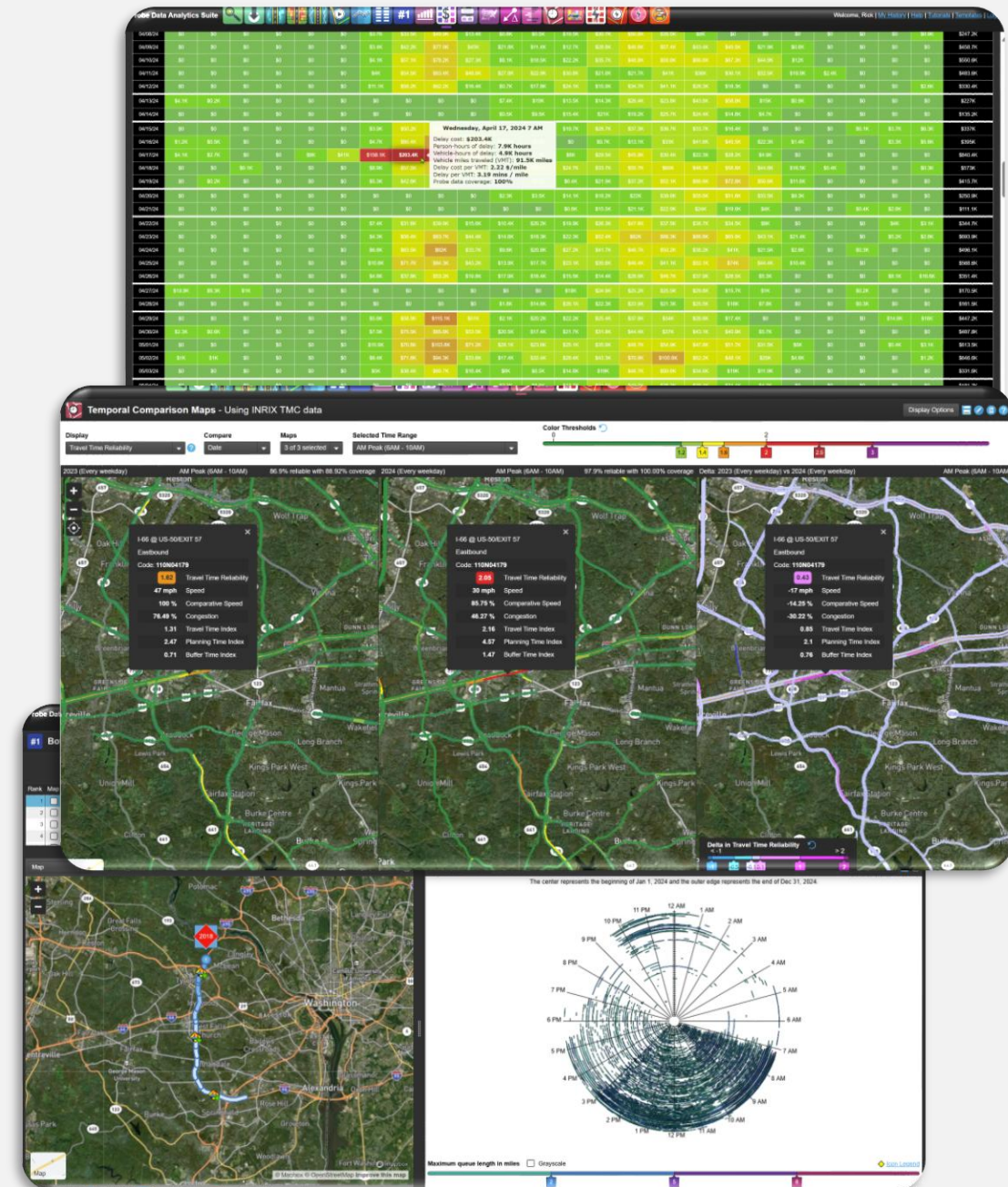
Polling Questions

How often do you use RITIS Probe Data Analytics for generating performance measures reports?

- Weekly
- Monthly
- Quarterly

How familiar are you with Esri products, in particular ArcGIS Online?

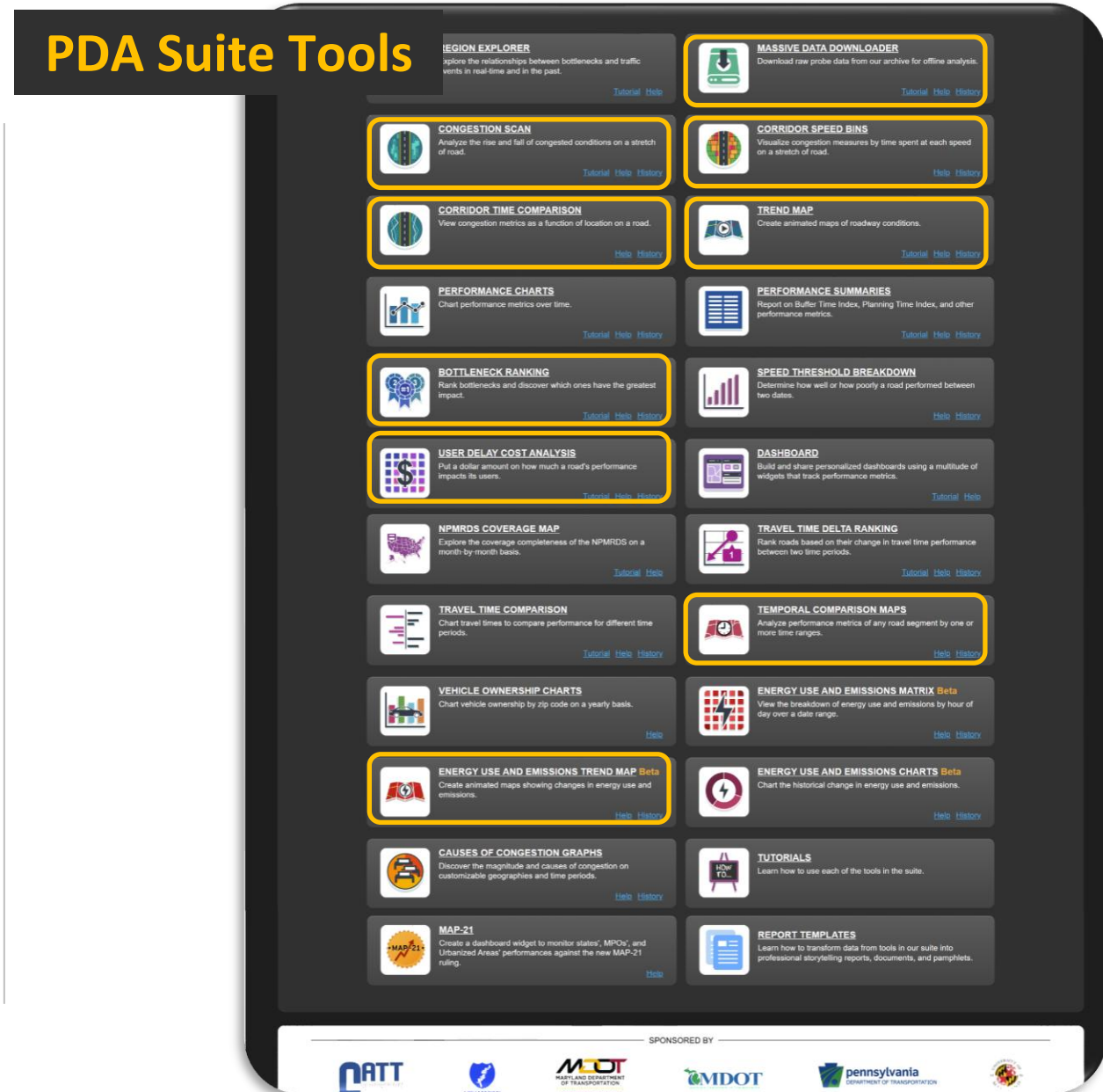
- None
- Casual user
- Use the online software solution regularly



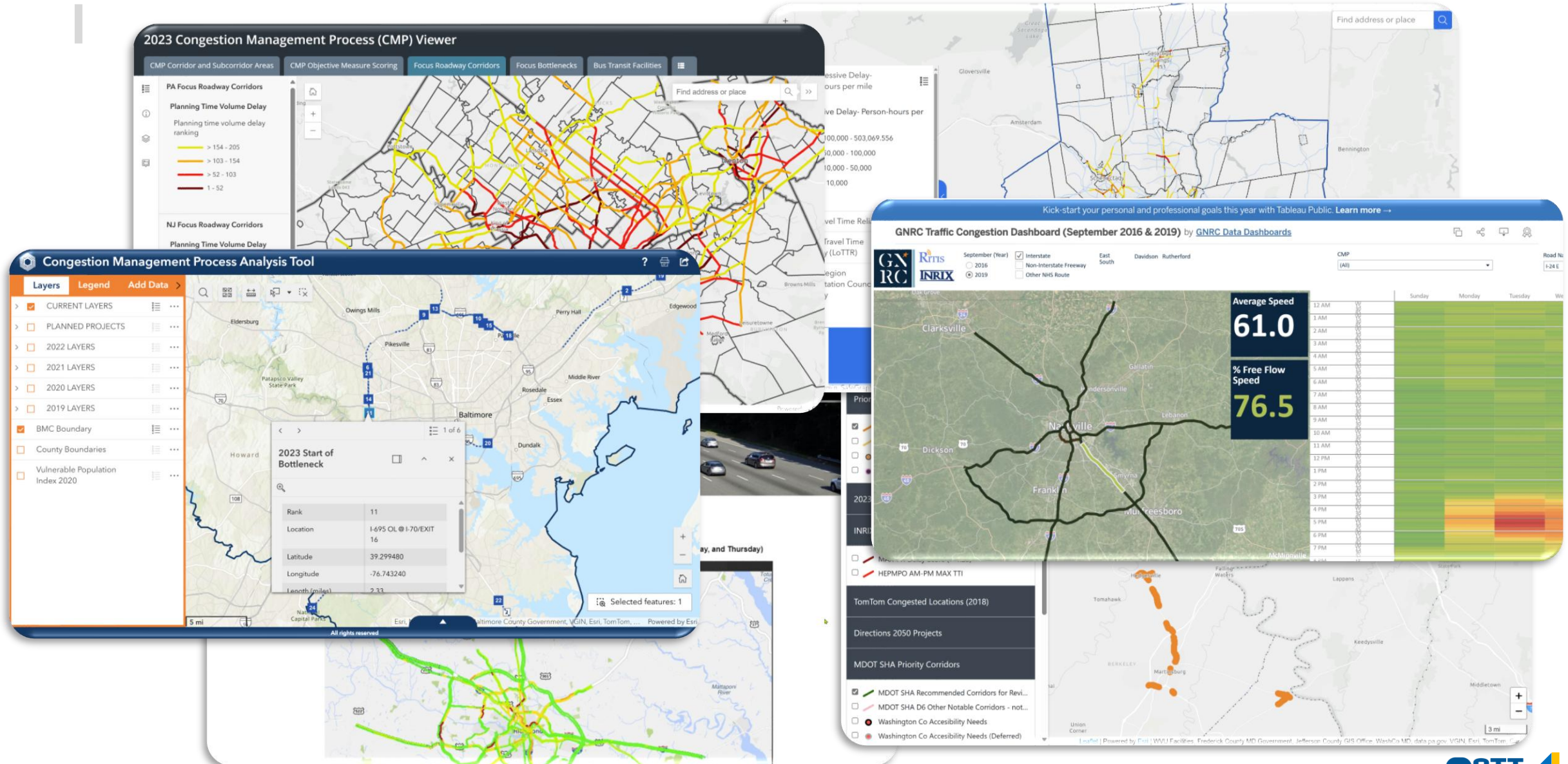
PDA – Which Tools Support Easy GIS Integration

Output reports that contain TMC or XD IDs:

- Congestion Scan
- Corridor Speed Bins
- Corridor Time Comparison
- Trend Map
- Bottleneck Ranking
- Temporal Comparison Maps
- Energy Use and Emissions Trend Map (*New)
- Massive Data Downloader



Agency CMPs Today – Integration of PDA and GIS



PDA – Tools Used in Today's Demos

Used these PDA Suite tools for my analysis:

- Bottleneck Ranking
- Temporal Comparison Maps
- User Delay Cost
- Causes of Congestion

GIS integration with ArcGIS Online for telling the story.

Also, a bit of LLM AI (Grok) along the way

PDA Suite Tools



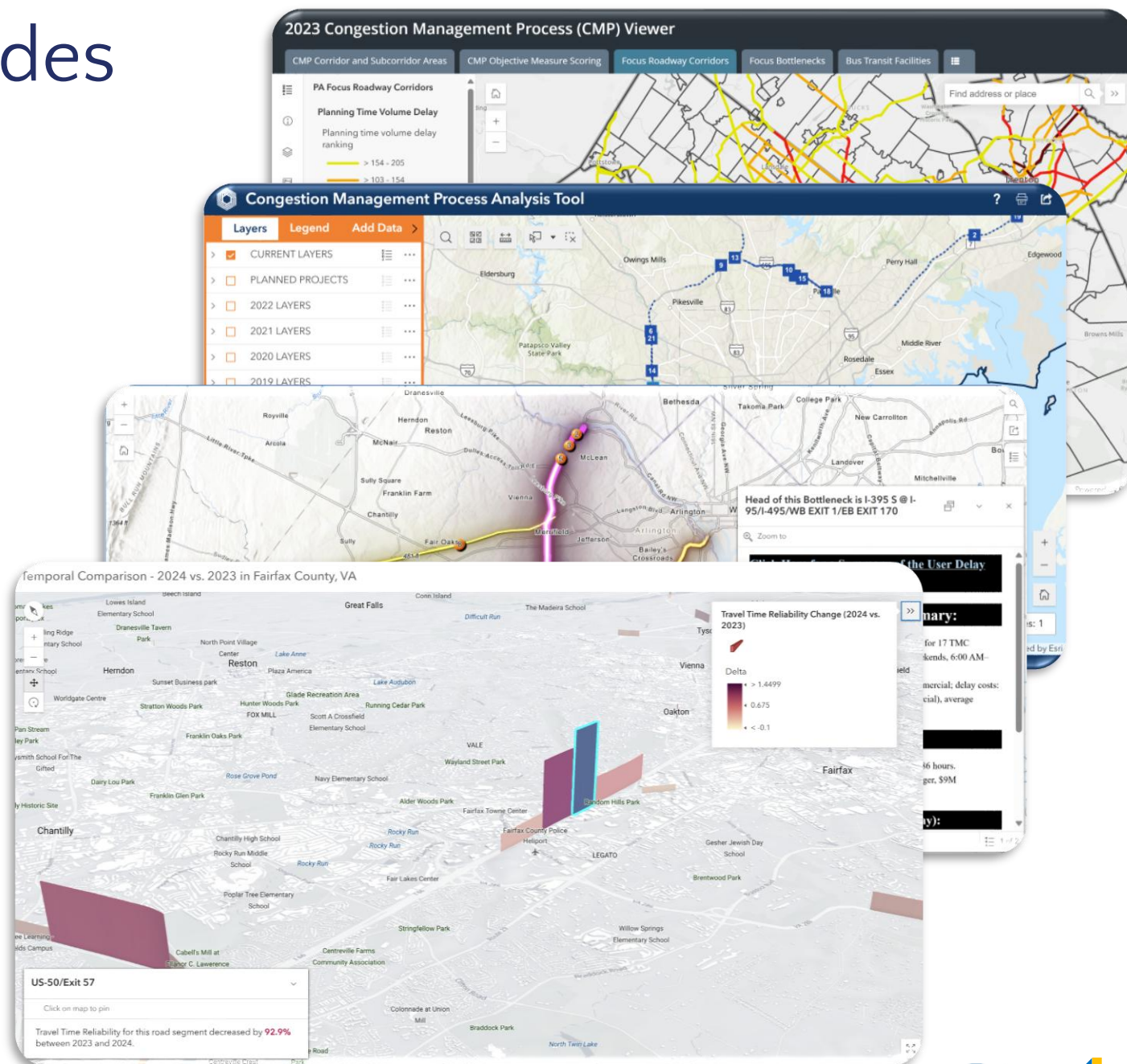
Wrap-up

- Several tools within PDA generate reports that can easily be integrated into ArcGIS Online
- ArcGIS Online serves as a nice platform to openly share your CMP performance measures insights
- Broad range of example CMPs that are available to peruse via ArcGIS Online catalog



Today's Demos and Slides

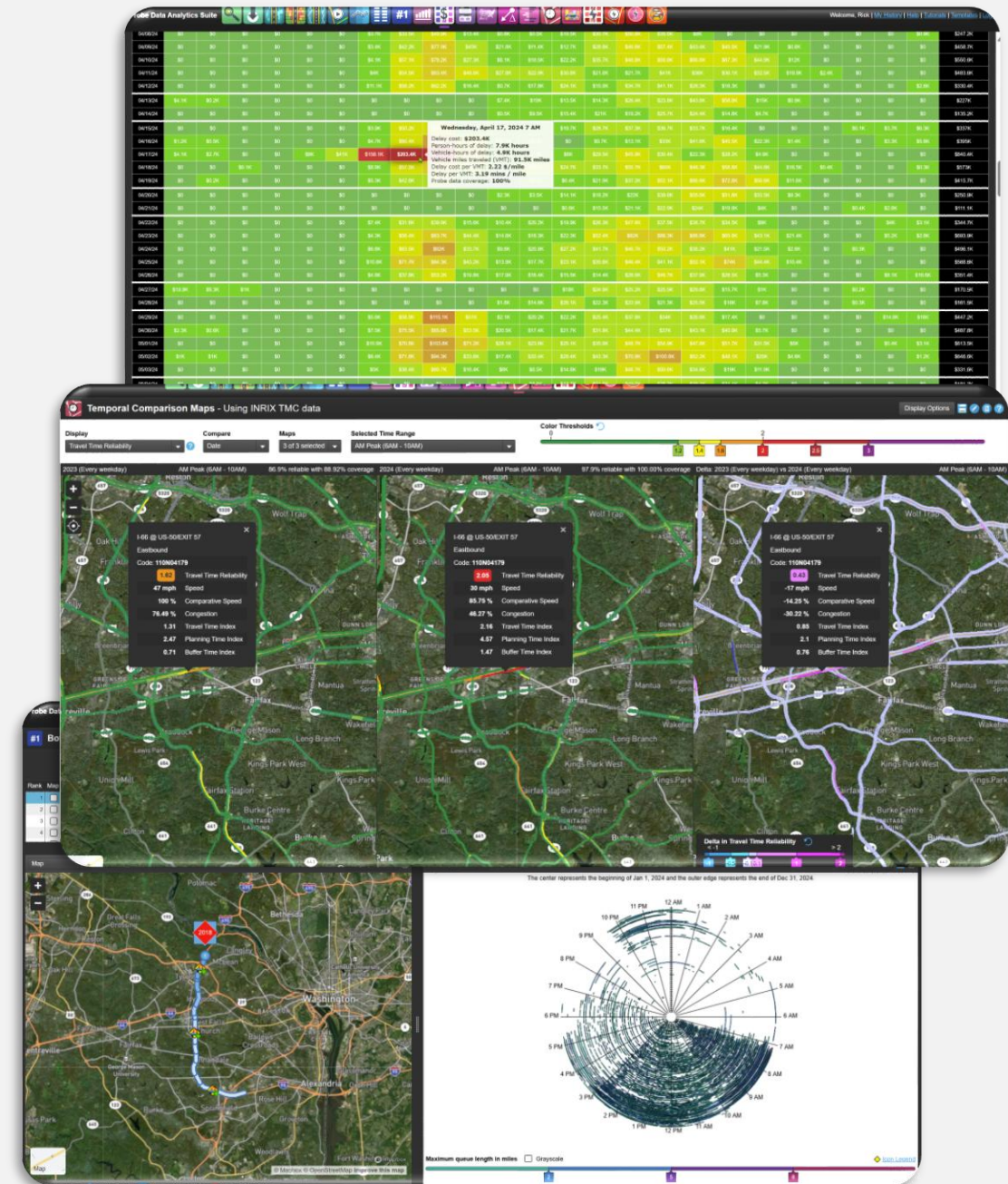
- [Link to PDF of all PDA reports and AGOL map apps used in today's demos](#)



Final Polling Question

What topic would you like the next RITIS workshop to dive into?

- Free form response





For more information, please
contact:

Rick Ayers
(CATT Lab)
rayers@umd.edu

Questions?



Sheryl Bradley (TETC)

sbradley@tetcoalition.org

Nicole Forest (TETC)

nforest@tetcoalition.org

Michael Pack (CATT Lab)

PackML@umd.edu

RITIS Tech Support

support@ritis.org

PDA Suite Tech Support

pda-support@ritis.org

