

Rob Bamford
TRANSCOM

Integrating Waze data with Public Agencies' Data

Transcom

Integrating Waze Data with Public Agencies' Data

TRANSCOM

I-95 Crowdsourcing Summit

WAZE “One-Click” Agreement

- Two Options
 - One-Way (WAZE → XCM)
 - Two-Way (WAZE <-> XCM)
- WAZE CCP Program operates per terms of “One-Click”
 - XCM Data Exchange T&C’s will not be recognized
 - Reviewed agreement with Counsel and no additional exposure or risk to TRANSCOM and/or Member Agencies.
 - It was decided to provide TRANSCOM Data to WAZE per terms of “One Click” Agreement.

Initial Look at Waze Data

- Data secured for states of New York/New Jersey/Connecticut
- Per TRANSCOM Agency Policy – 3rd party data used for informational purposes by agencies only
- 3 types of events available in Event Feed:
 - Alerts
 - Jams
 - Irregularities

Alerts in the Waze Data

- ACCIDENT
 - Minor
 - Major
 - No subtype
- JAM
 - MODERATE TRAFFIC
 - HEAVY TRAFFIC
 - STAND STILL TRAFFIC
 - LIGHT TRAFFIC
 - NO SUBTYPE

Alerts in the Waze Data

- WEATHER HAZARD/HAZARD
 - On road
 - On shoulder
 - Weather
 - On road object
 - On road pot hole
 - On road road kill
 - On shoulder car stopped
 - On shoulder animals
 - On shoulder missing sign

Alerts in the Waze Data

- WEATHER HAZARD/HAZARD (continued)
 - Weather fog
 - Weather hail
 - Weather heavy rain
 - Weather heavy snow
 - Weather flood
 - Weather monsoon
 - Weather tornado
 - Weather heat wave
 - Weather hurricane

Alerts in the Waze Data

- WEATHER HAZARD/HAZARD (continued)
 - Weather freezing rain
 - On road lane closed
 - On road oil
 - On road ice
 - On road construction
 - On road car stopped
 - No subtype

Alerts in the Waze Data

- MISC
 - No subtype
- CONSTRUCTION
 - No subtype
- ROAD CLOSED
 - Hazard
 - Construction
 - Event
 - No subtype

Alerts in the Waze Data

Tuesday 12/6/16

- All alerts
 - 3,223,001
 - 2,092,198 - Minus yellow event types
- Total unique alert count
 - 66,034
 - 40,174 – Minus yellow event types

Alerts in the Waze Data

Tuesday 12/6/16

- Total unique alert count with confidence > 3
 - 2,476
 - 989 - Minus yellow event types
- Total unique alert count with confidence > 3 and no 511NJ alerts
 - 2,458
 - 971 - Minus yellow event types

Jams in the Waze Data

- Streets
- Primary Streets
- Freeways
- Ramps
- Trails
- Primary
- Secondary
- 4X4 Trails
- Ferry crossings

Jams in the Waze Data

- Walkway
- Pedestrian
- Exit
- Stairway
- Private roads
- Railroads
- Runway/taxiway
- Parking lot roads

Jams in the Waze Data

Tuesday 12/6/16

- All jams
 - 2,675,934
 - 2,632,209 - Minus yellow roadway types
- Total unique jam count
 - 207,820
 - 207,774 – Minus yellow roadway types

Jams in the Waze Data

Tuesday 12/6/16

- **Total unique jam count with congestion level = 5**
 - 40,466
 - 40,422 - Minus yellow roadway types
- **Total unique alert count with congestion level = 5 and no 511NJ alerts**
 - 1,051
 - 1,007 - Minus yellow roadway types

Irregularities in the Waze Data

- Per definition from Waze, Irregularities are Events and Jams that exceed 'normal' conditions.
 - Important note: original Event or Jam distributed in feed prior to issuing Irregularity.

Waze Data

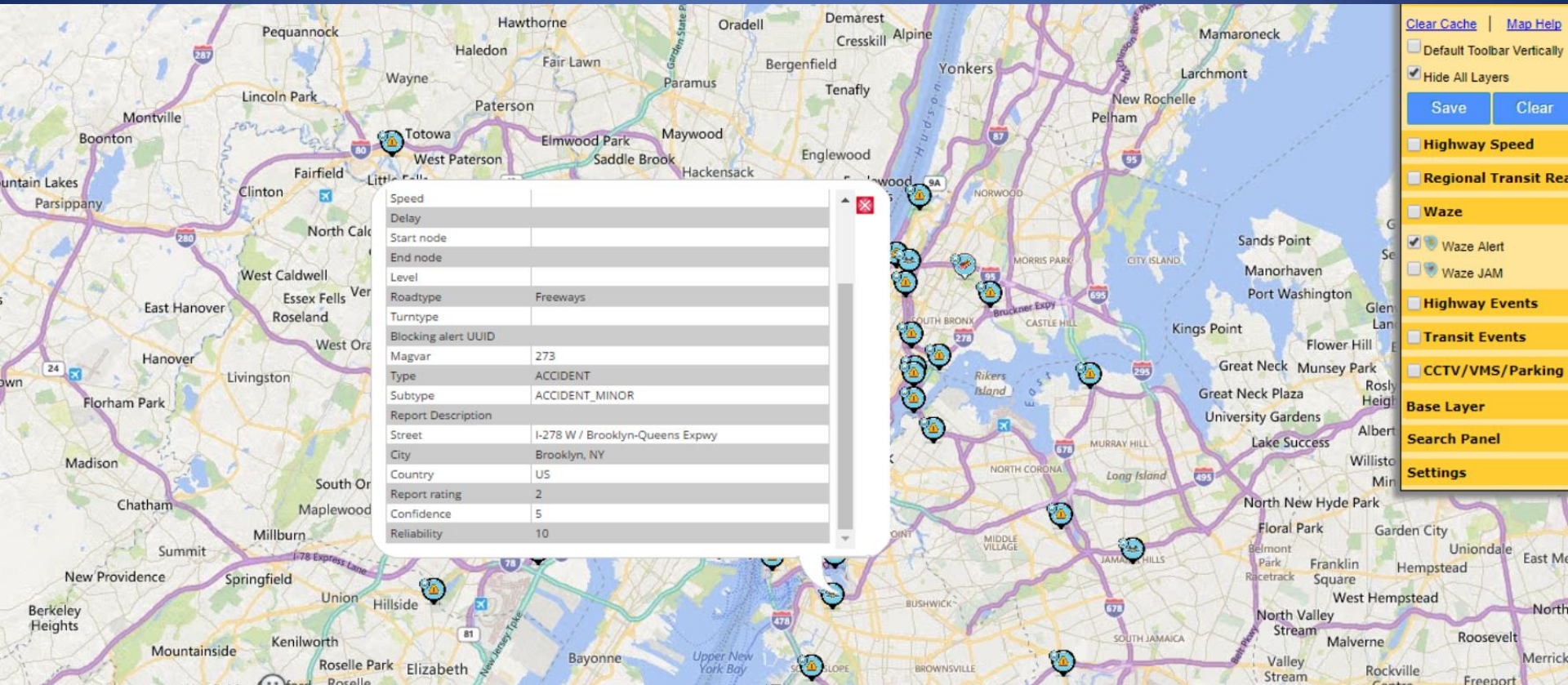
Tuesday 12/6/16

- ALERTS – 971
- JAMS – 1,007
- IRREGULARITIES - ??
- TOTAL – 1,978

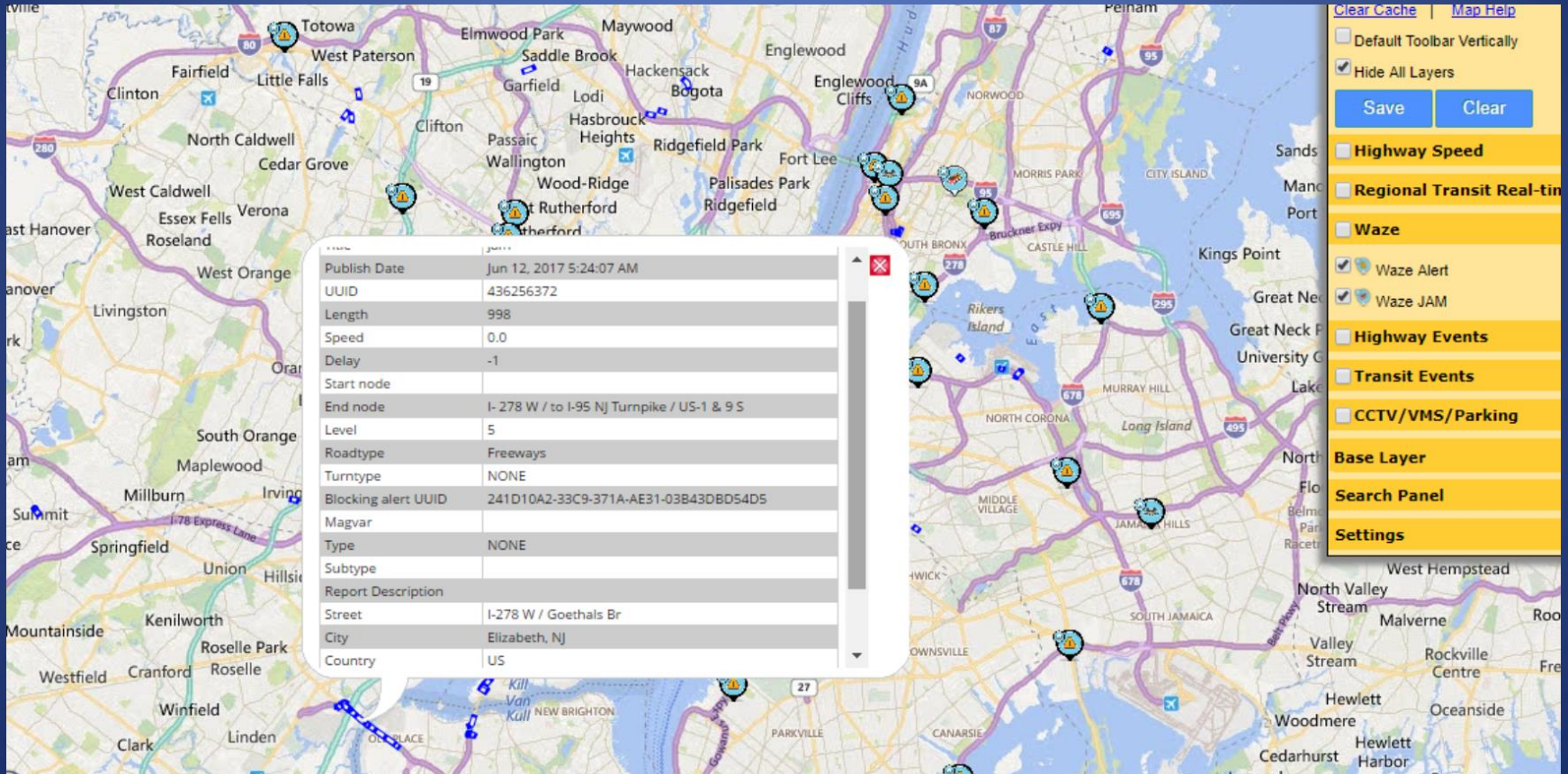
Waze Data

- Data did include:
 - Lat/Long
- However, data did not always include:
 - Agency
 - Roadway
 - Direction
 - Type of accident
 - Specifics of incident

Waze Data – Event Sample



Waze Data – Jam Sample



Waze Data Usage

- Per TRANSCOM Agency Policy – 3rd party data used for informational purposes only
 - Data available via TRANSCOM System Tools
 - Usage/actions are determined by agencies subject to their procedures and policies
 - Example - Jam vs. recurring congestion

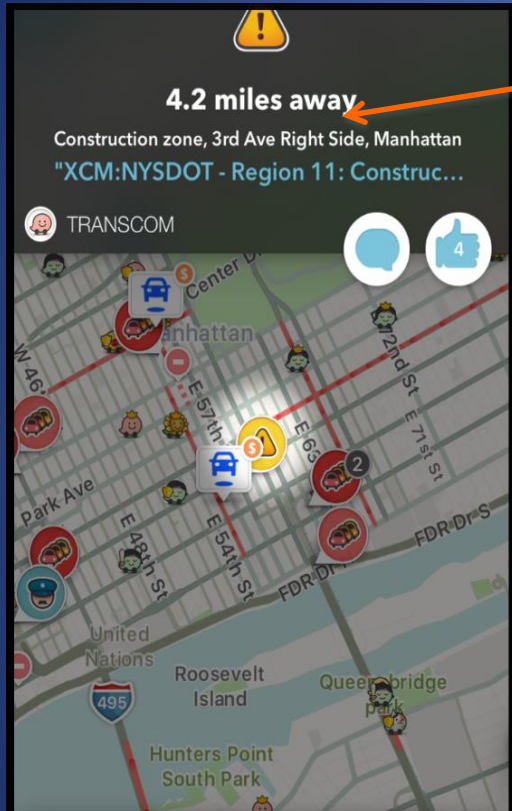
TRANSCOM Data to Waze

- Initial datafeed provided all content (planned and active Events)
 - Subject to observed significant durations, planned events removed from datafeed.
 - Thanksgiving's day parade was being posted for 2017 in April 2017.
- Event Message updated per agency feedback as part of Penn Station support activities
 - Cut down from 160 characters to 70

TRANSCOM Data to Waze

- Per Waze configuration, a designated keystroke required to address data recursion on the Waze -> TRANSCOM interface.

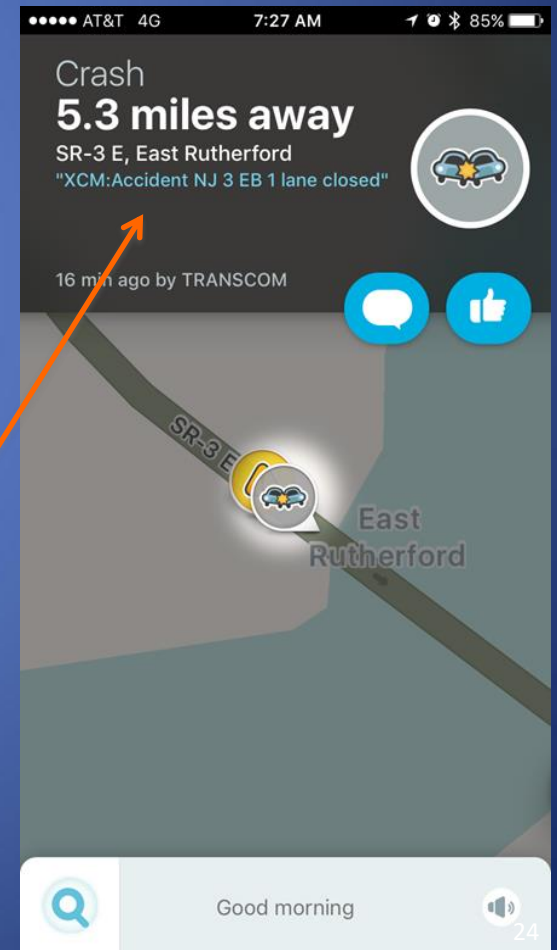
Waze Use of TRANSCOM Data



Original configuration based on existing Datafeed structure

Based on character limitation – message Description was being cut off and/or truncated

- Per request from agencies as part of Penn Station Maintenance, message customized for Waze to focus on event description



TRANSCOM 3rd Party Data - Next Steps

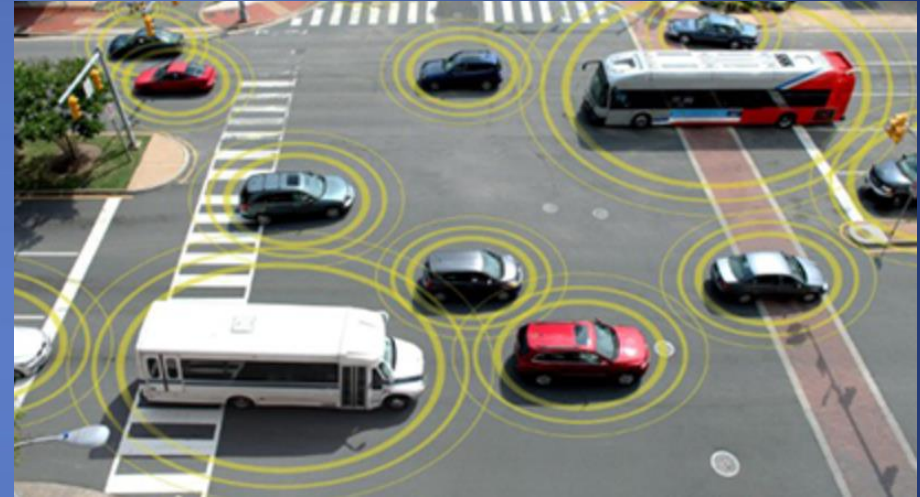
UBER Movement

- Working to secure feed for assessment/review by TRANSCOM Member Agencies
 - Offers alternative to Waze
 - Another data source that can be integrated into TRANSCOM Data Fusion Engine

TRANSCOM 3rd Party Data - Next Steps

As part of TRANSCOM Regional Architecture, 2018 update to include CV data elements

- Support data exchange
- Specification source for Member Agency procurements/assessments



Questions?

Rob Bamford

TRANSCOM

bamford@xcm.org