

Clifton Curtis

Maine Department of Transportation

Maine Waze



MAINE WAZE

I-95 Corridor Coalition Crowdsourcing Summit

September 14, 2017



[HTTP://WWW.MAINE.GOV/MDOT/MAPVIEWER/](http://www.maine.gov/mdot/mapviewer/)

File Edit View Favorites Tools Help

Mobile Device Portal AIMS - MATS Web Report... Best of the Web Channel Guide Internet Start MaineDOT Intranet MATS Fundamentals Rep... MATS Fundamentals Web...

MaineDOT Map Viewer

Login Layers Imagery Apps Tools Share ?

Search...

PORTLAND

CAPE ELIZABETH

Scale: 1:36000 0.4mi

Maine WAZE Viewer

Refreshed at 9:39:41 AM Refreshing in 99 seconds.

<input checked="" type="checkbox"/>		Hazard (52)	
<input checked="" type="checkbox"/>		Road Closed (29)	
<input checked="" type="checkbox"/>		Traffic Jam (6)	
<input checked="" type="checkbox"/>		Congestion Level 1 (3)	
<input checked="" type="checkbox"/>		Congestion Level 2 (4)	
<input checked="" type="checkbox"/>		Congestion Level 3 (10)	
<input checked="" type="checkbox"/>		Congestion Level 4 (1)	
<input checked="" type="checkbox"/>		Congestion Level 5 (29)	

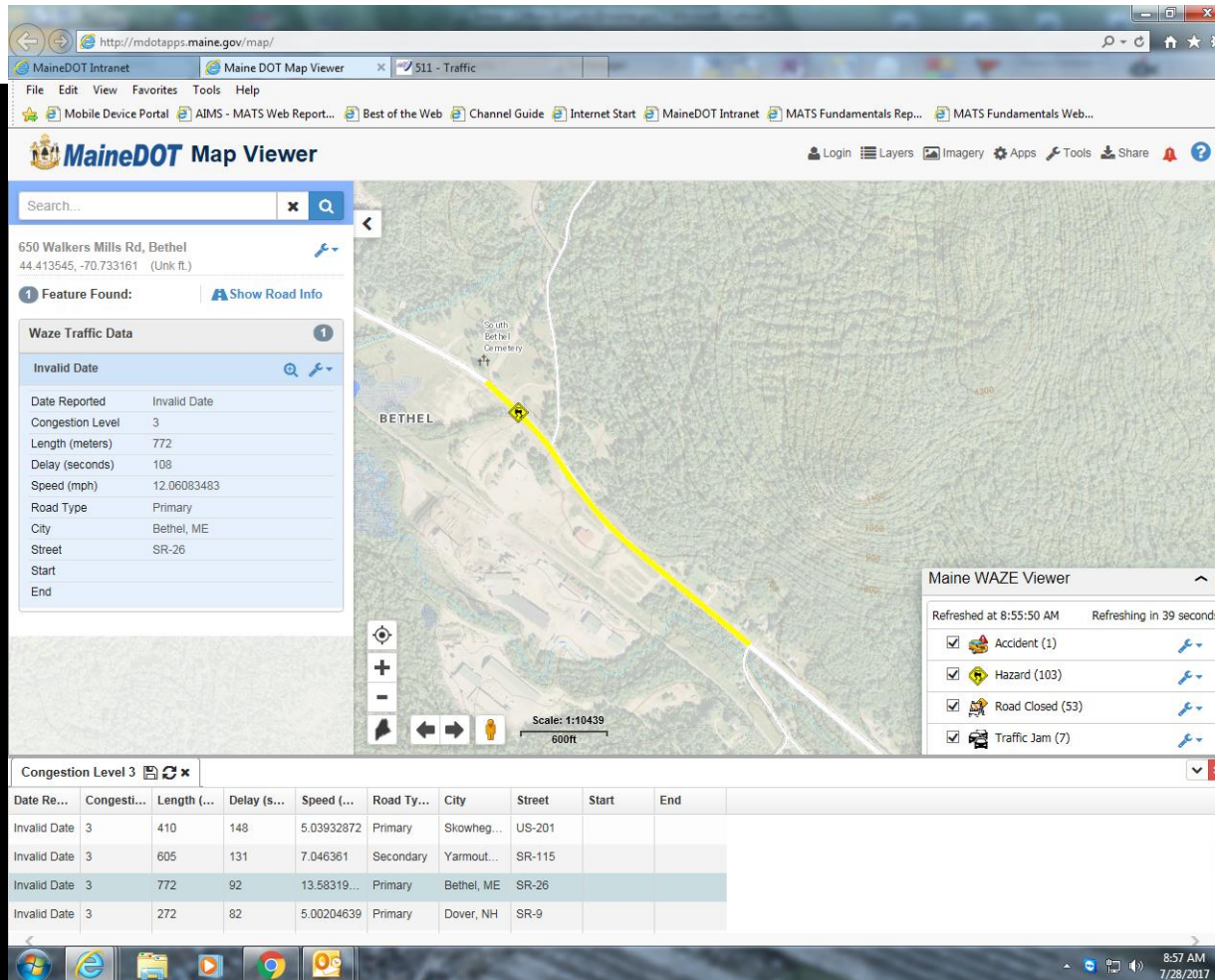
Map Layers

12 User Layers

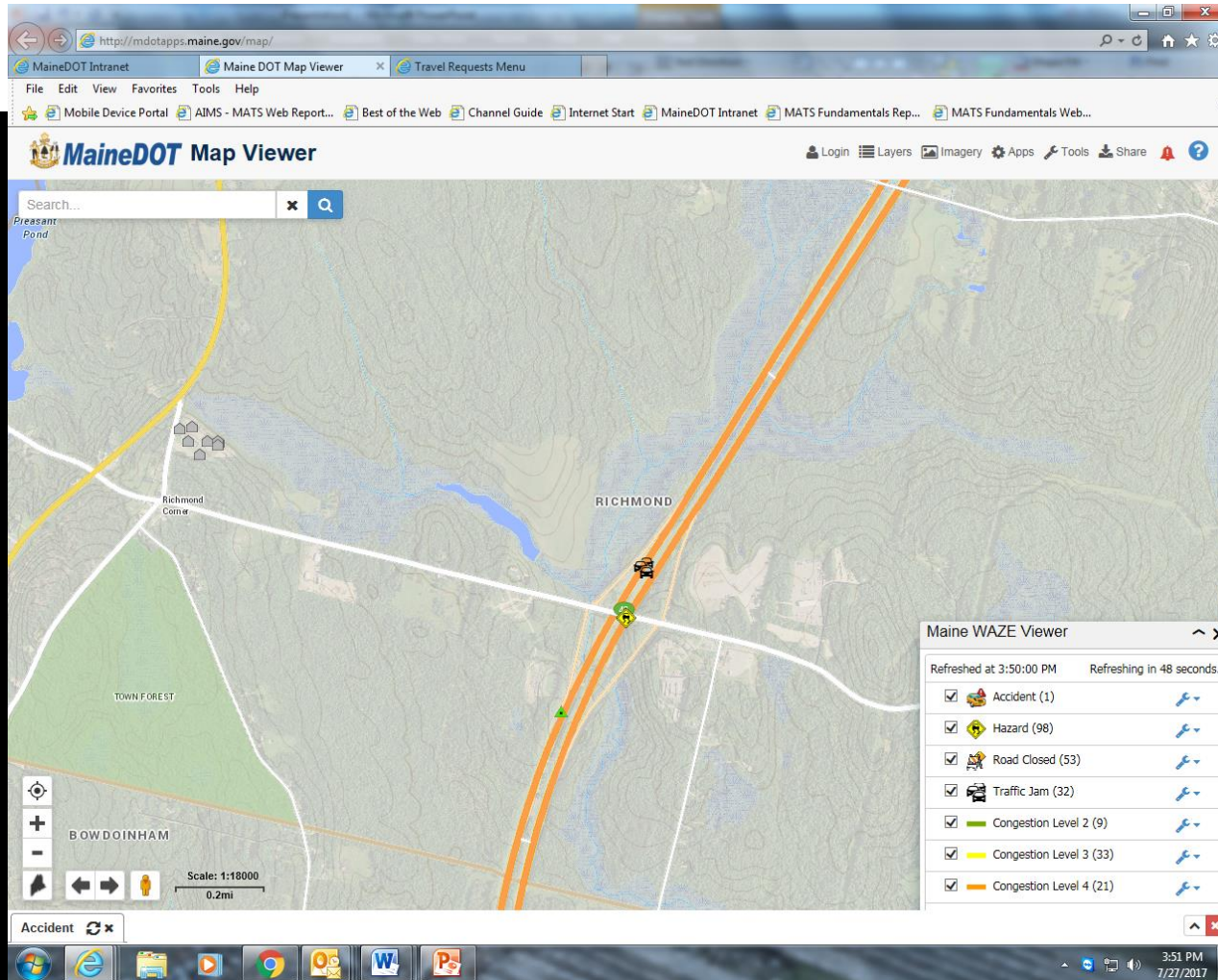
- ☐ Bridges - All
- ☐ Buildings
- ☐ Interstate Mileposts
- ☐ Maine 511
- ☒ Data Filter: OFF
- ☐ Projects - Construction Phase
- ☐ Speed Limit
- ☐ Summer Crew
- ☐ Survey - MEDOT CORS
- ☐ Traffic Signals
- ☐ Waze Alerts
- ☐ Waze Traffic
- ☐ Winter Crew

Basemap Layers

MONITOR – INTERNAL APP



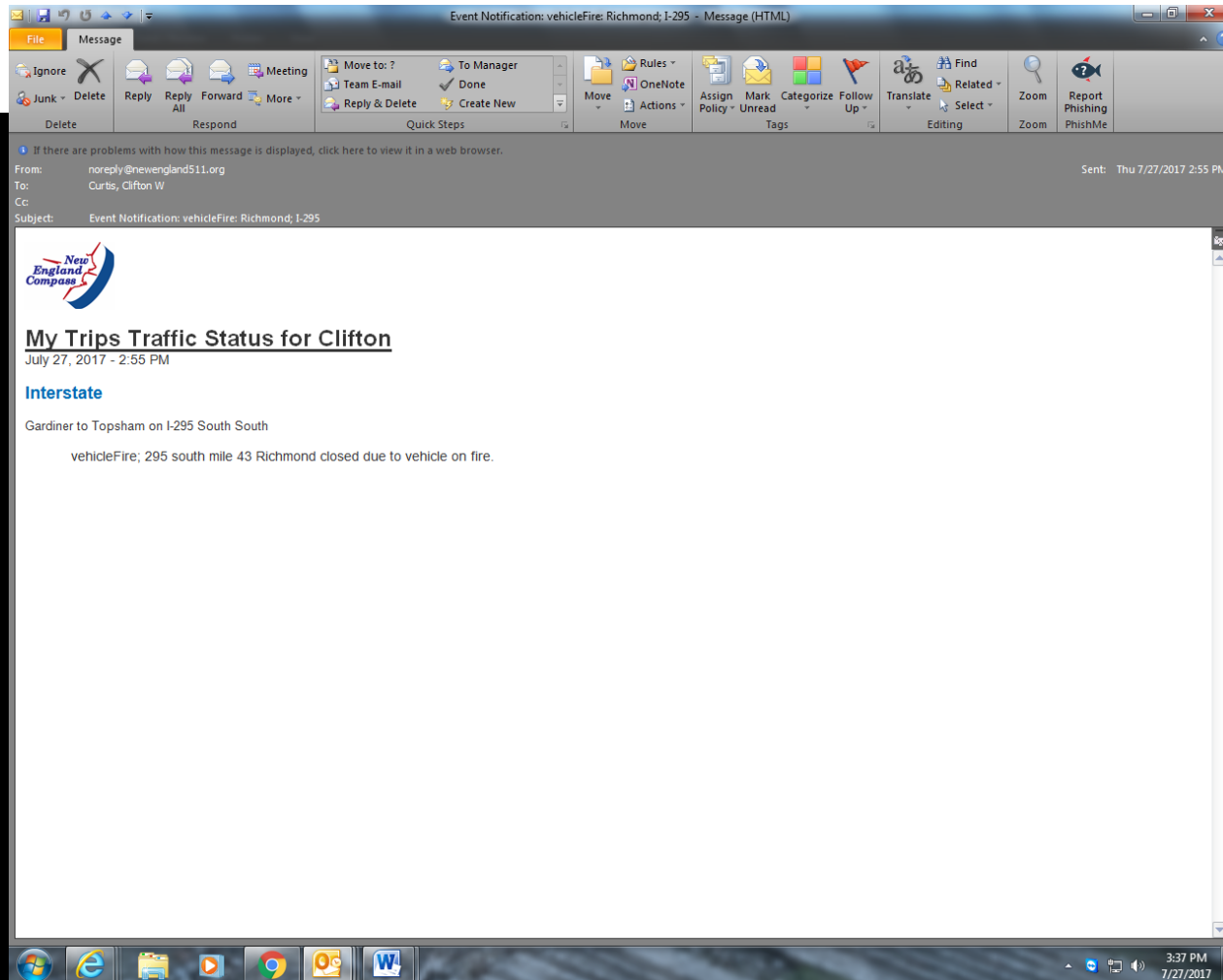
ALERT



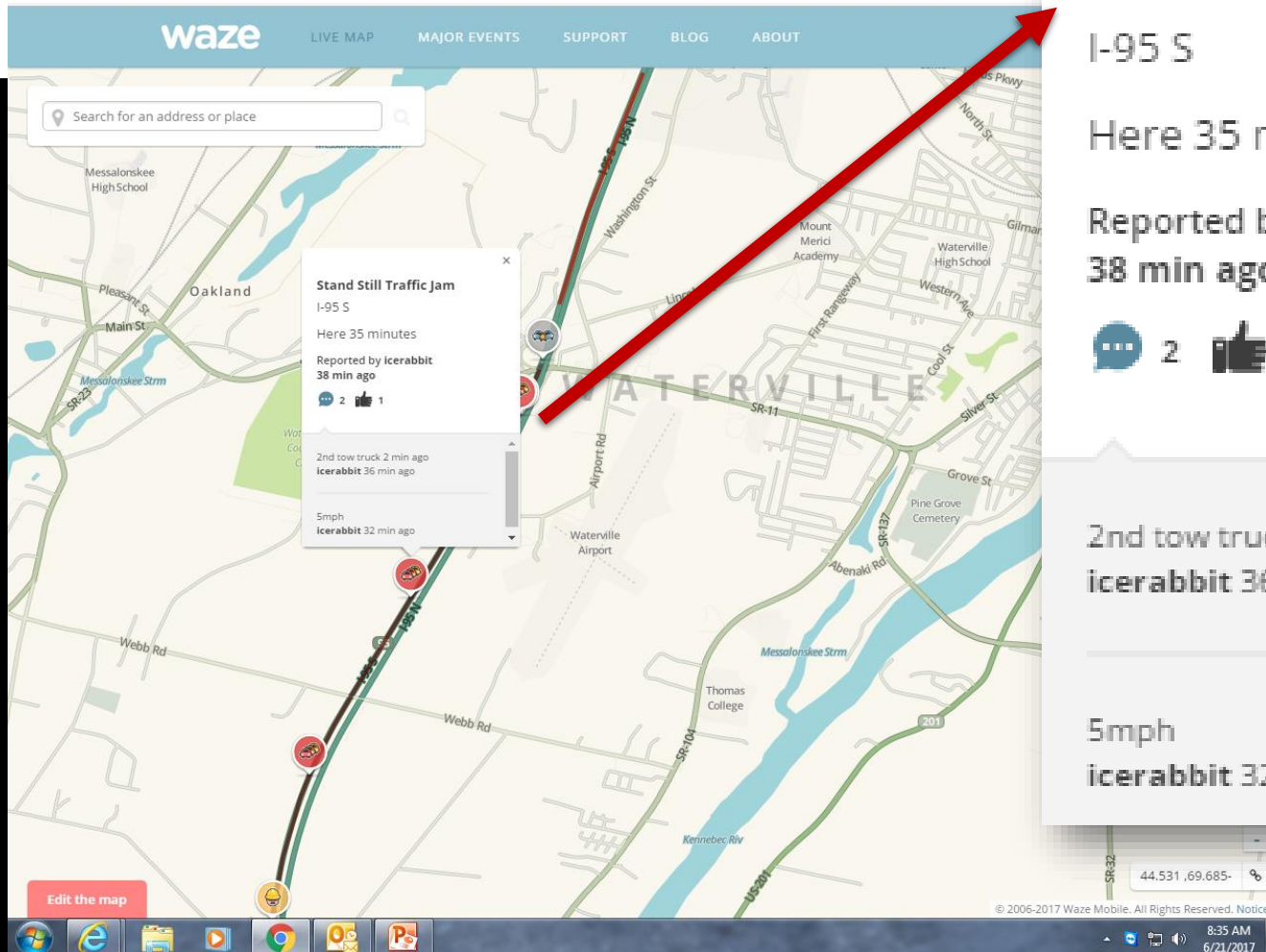
VERIFY



DISSEMINATE



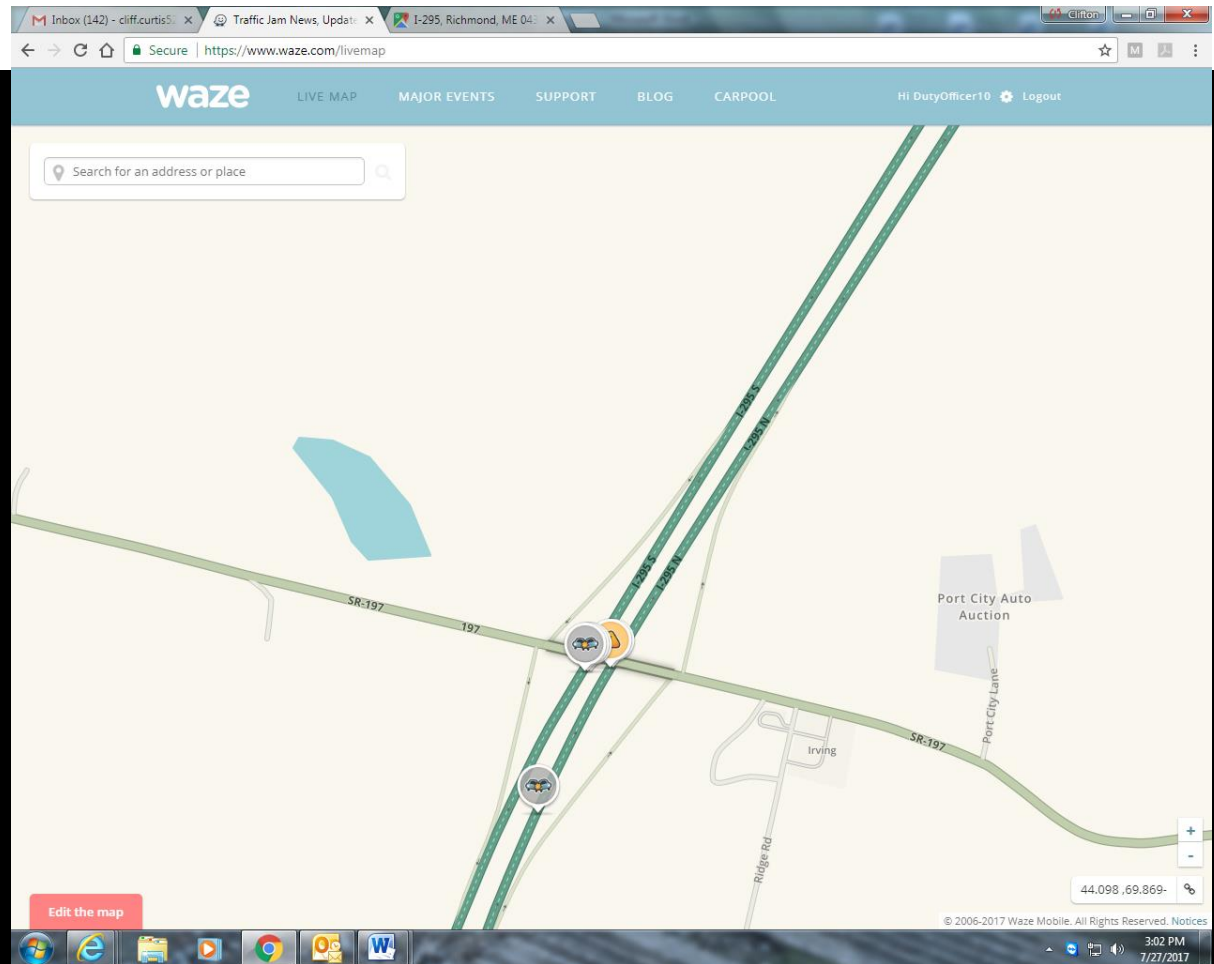
WAZE LIVE MAP



September 14, 2017

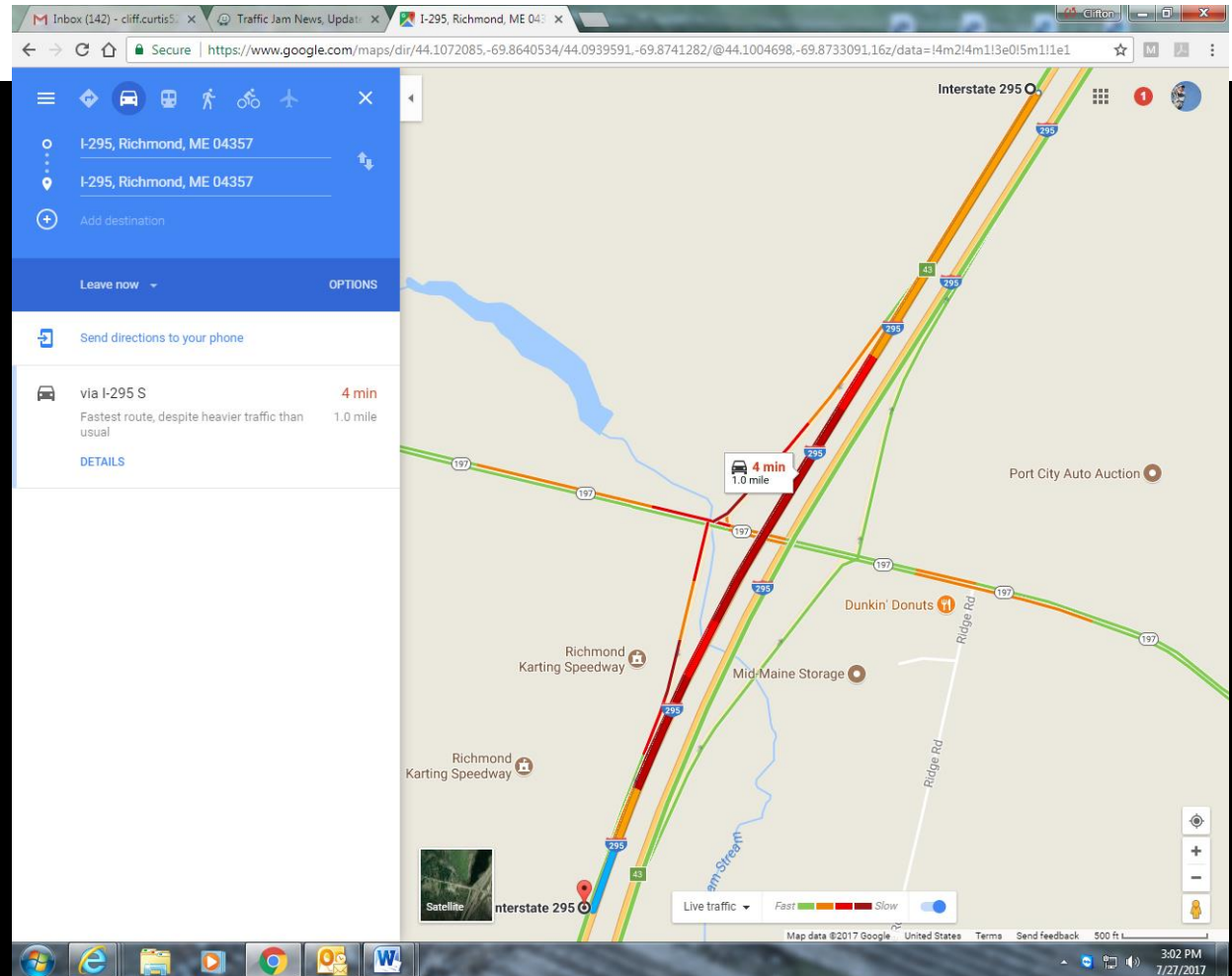
INITIAL TRAVEL TIME - WAZE

Shows crashes, but
no travel time
information for the
first few minutes



MONITOR – GOOGLE MAPS

Google is showing information faster, but need to refresh screen to get updated information



MONITOR - WAZE

After a few minutes, delay shows up in system and reports real-time impacts. Automatically stays updated.

The screenshot shows the Waze live map interface. At the top, there's a navigation bar with the Waze logo and links for LIVE MAP, MAJOR EVENTS, SUPPORT, BLOG, and CARPOOL. Below this is a search bar. The map displays a section of I-295 S in Richmond, ME, with a red line indicating heavy traffic. A red arrow points from a detailed text box on the left to a smaller notification box on the map.

Heavy traffic
On I-295 S in Richmond, ME
Due to: major accident
Average speed: 14 mph
Driving time: 3 minutes
1 minute ago

I-295 S
Richmond, ME

The map also shows other roads like Langdon Rd, SR-197, and Ridge Rd. A location marker for 'Port City Auto Auction' is visible. The bottom of the screen shows the Waze Mobile copyright notice and the time 3:03 PM on 7/27/2017.

FUTURE

- Exploring Google Map's API for speed information.
- Will record "normal" travel times using Waze's Traffic View, and perform fuzzy math to identify delays along corridors.
- Need to find real-time updated reporting. Currently, still need to refresh webpage to collect updated information.
- Add Waze reports to TIS for general public awareness.
- DOT will continue reporting events missed by crowdsourced data.

SUCCESSFUL PROJECTS ARE USING
TOOLS, BEING CREATIVE AND HAVING
THE WILL POWER TO SUCCEED.



QUESTIONS?

Clifton Curtis

Maine Department of Transportation

Clifton.W.Curtis@maine.gov



Lunch including - Roundtable Data Discussion (45min)



Please note that we will be muting the conference call line at DVRPC during this break – you may stay on the line & we will resume after the break