

I-26 Reversal Operations I-26 at I-77

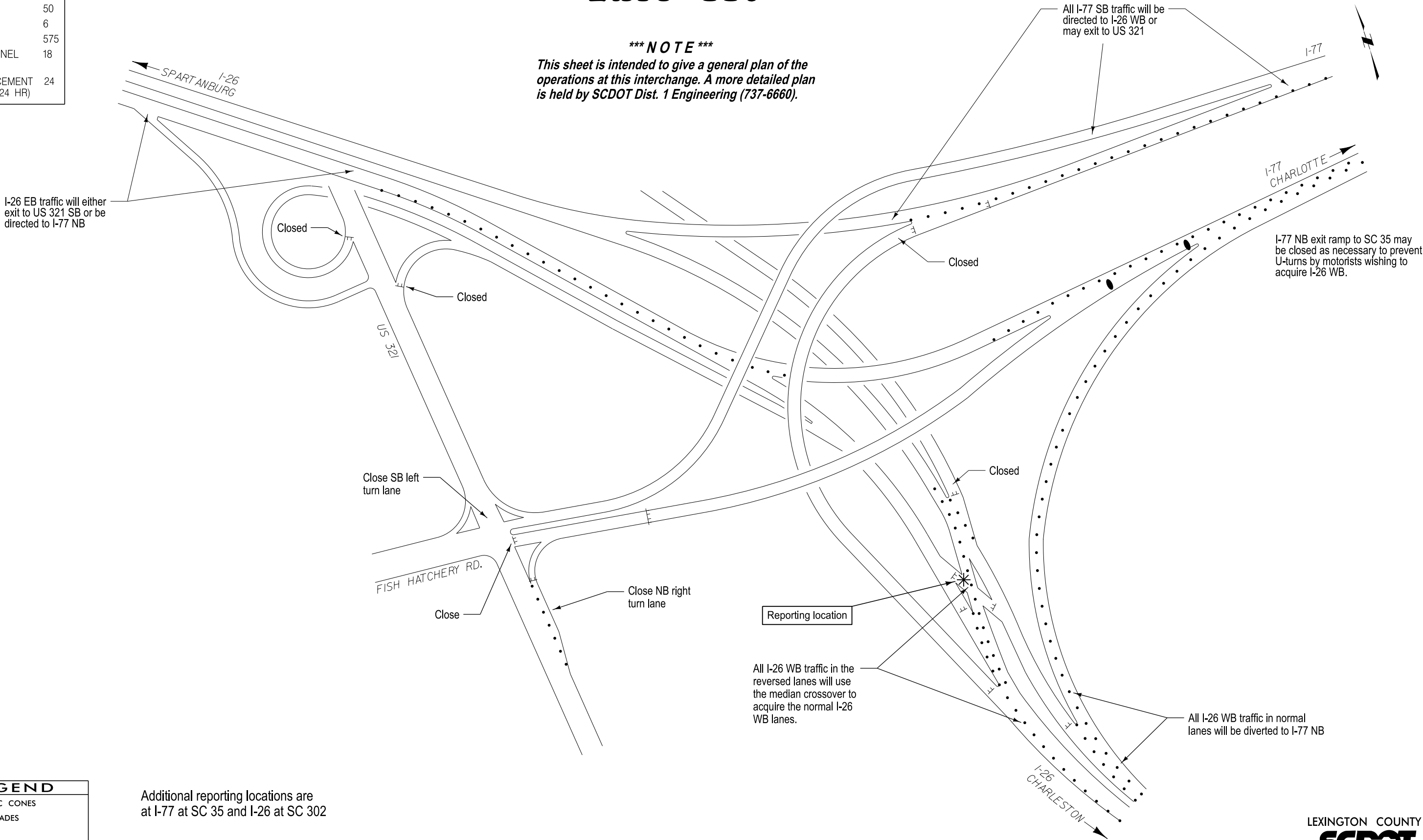
EXIT 116

REQUIRED ASSETS:

BARRICADES	50
DRUMS	6
CONES	575
DOT PERSONNEL (Per Shift)	18
LAW ENFORCEMENT PERSONNEL (24 HR)	24

*** NOTE ***

This sheet is intended to give a general plan of the operations at this interchange. A more detailed plan is held by SCDOT Dist. 1 Engineering (737-6660).



LEGEND

- TRAFFIC CONES
- ± BARRICADES
- DRUMS

Additional reporting locations are at I-77 at SC 35 and I-26 at SC 302

REVISED: 4/15/11

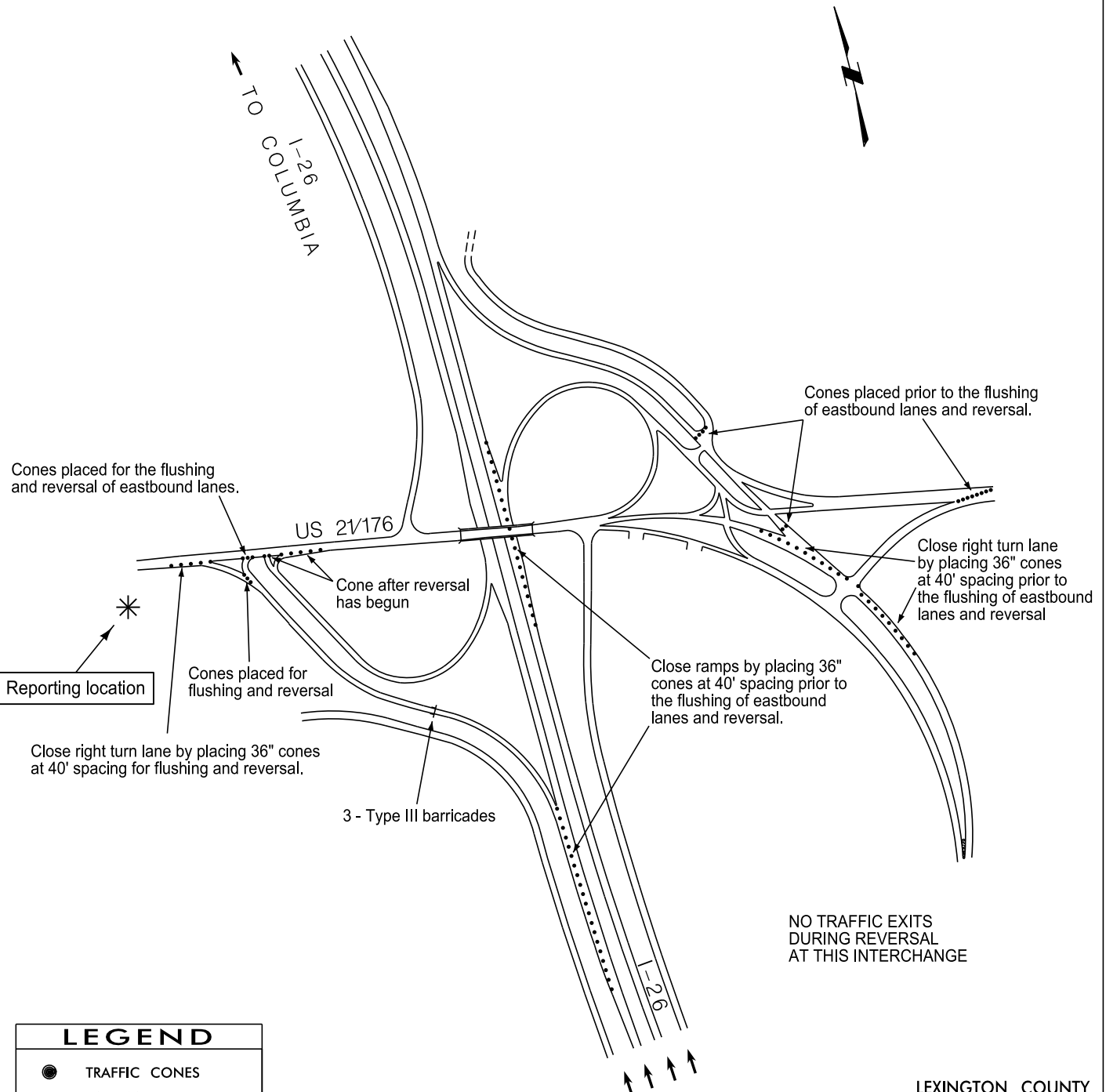
I-26 Reversal Operations

I-26 at US 21/176

REQUIRED ASSETS:

CONES	140
DOT PERSONNEL	2
LAW ENFORCEMENT PERSONNEL (24 HR)	6

EXIT 119



LEGEND

- TRAFFIC CONES
- == BARRICADES

REVISED: 6/25/13

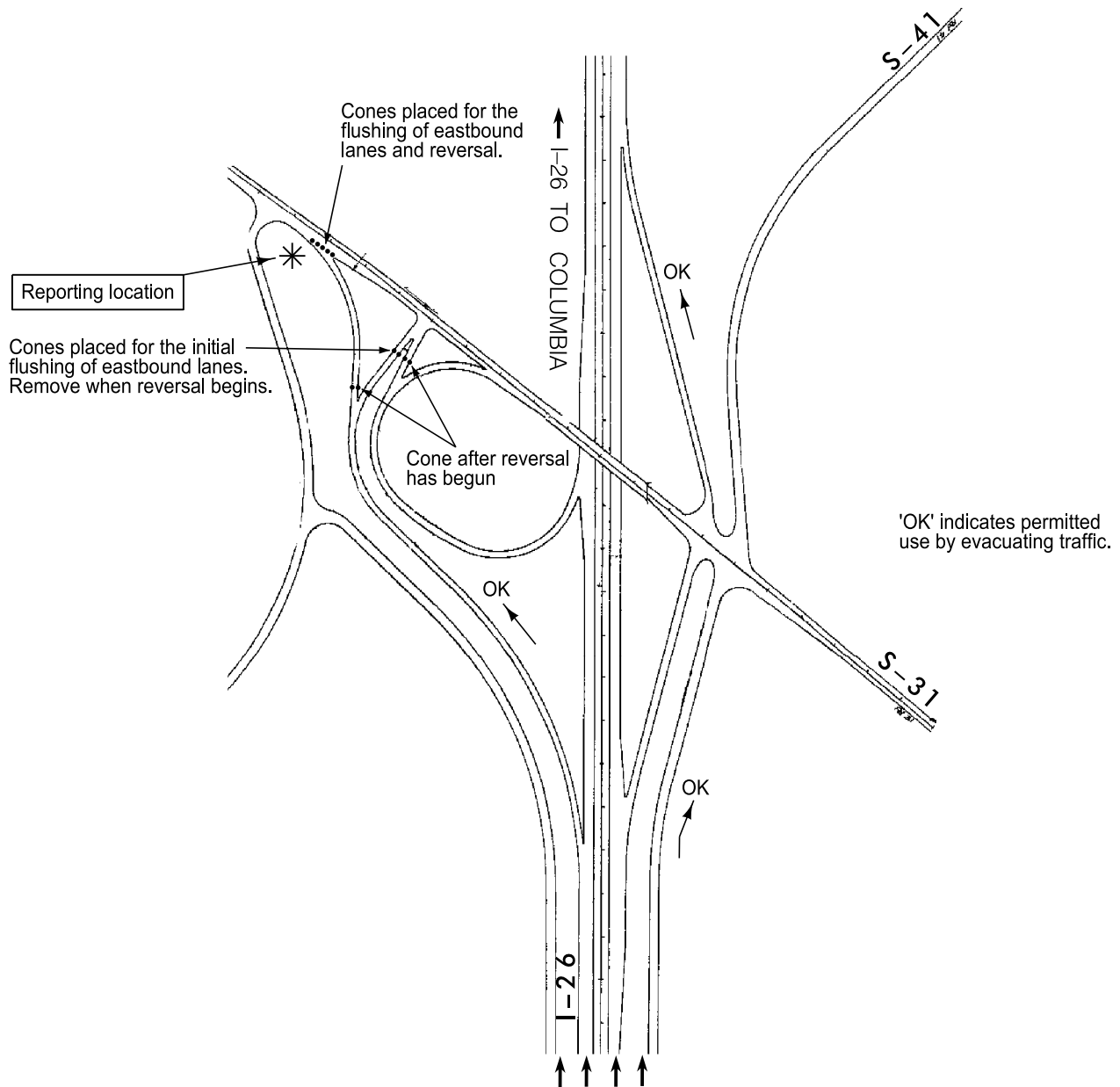
I-26 Reversal Operations

I-26 at S-31

REQUIRED ASSETS:

CONES	38
DOT PERSONNEL	3
LAW ENFORCEMENT PERSONNEL (24 HR)	8

EXIT 125



LEGEND

● TRAFFIC CONES

REVISED: 3/8/11

CALHOUN COUNTY
SCDOT

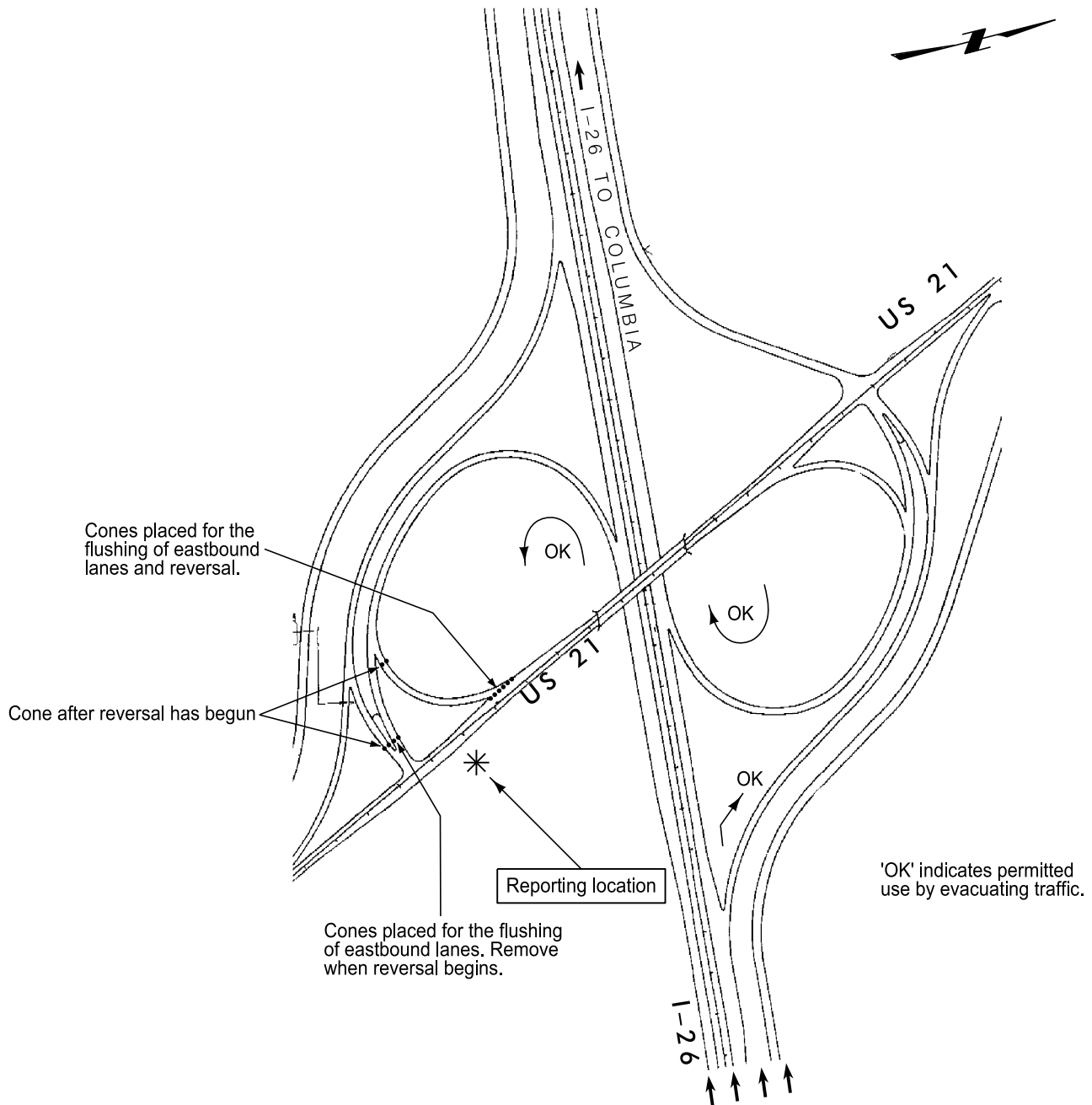
I-26 Reversal Operations

I-26 at US 21

REQUIRED ASSETS:

CONES	36
DOT PERSONNEL	3
LAW ENFORCEMENT PERSONNEL (24 HR)	8

EXIT 129



LEGEND

● TRAFFIC CONES

REVISED: 3/8/11

LEXINGTON COUNTY
(MANNED BY CALHOUN COUNTY)

SCDOT

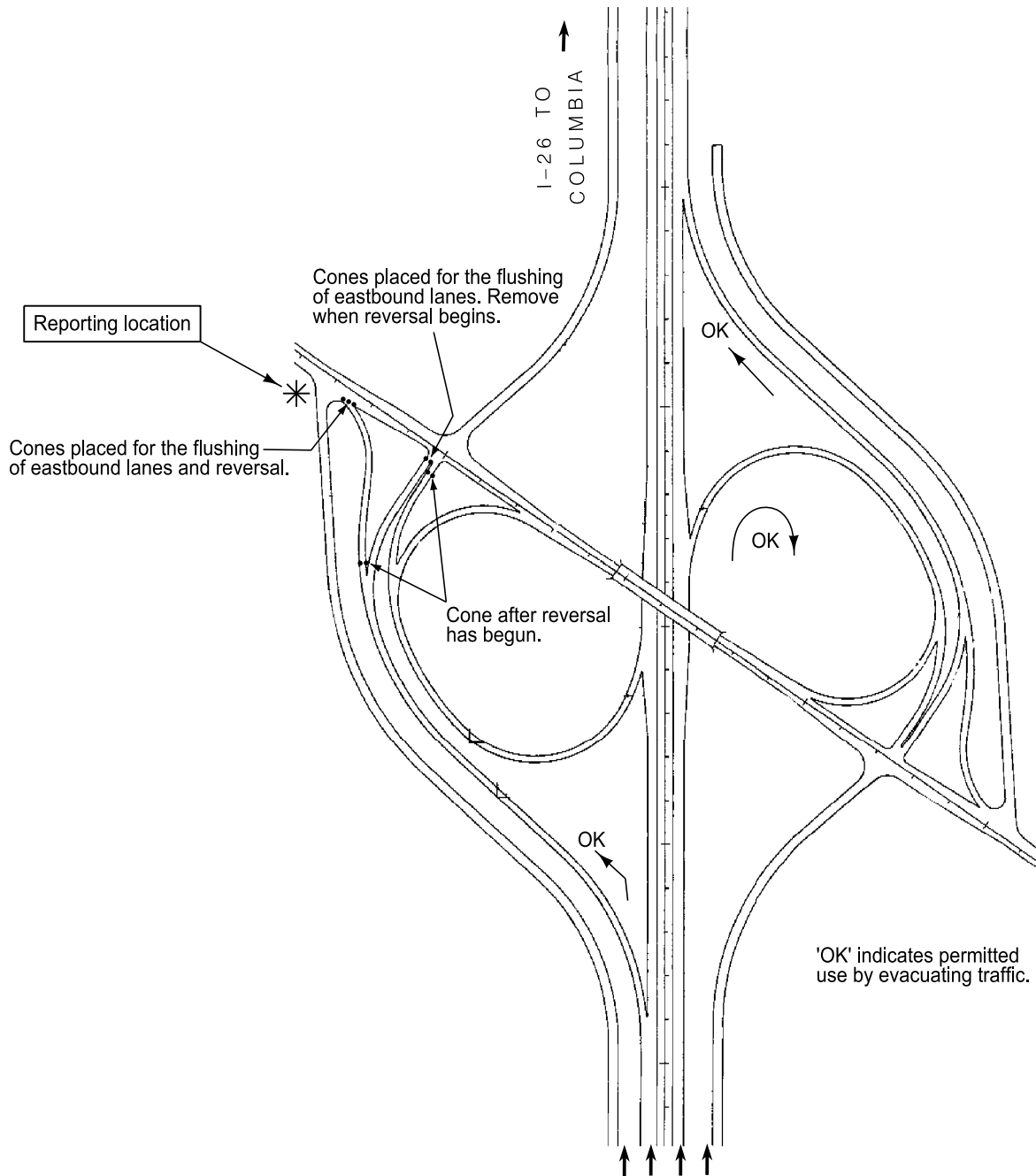
I-26 Reversal Operations

I-26 at SC 6

REQUIRED ASSETS:

CONES	31
DOT PERSONNEL	3
LAW ENFORCEMENT PERSONNEL (24 HR)	6

EXIT 136



LEGEND

● TRAFFIC CONES

REVISED: 3/16/11

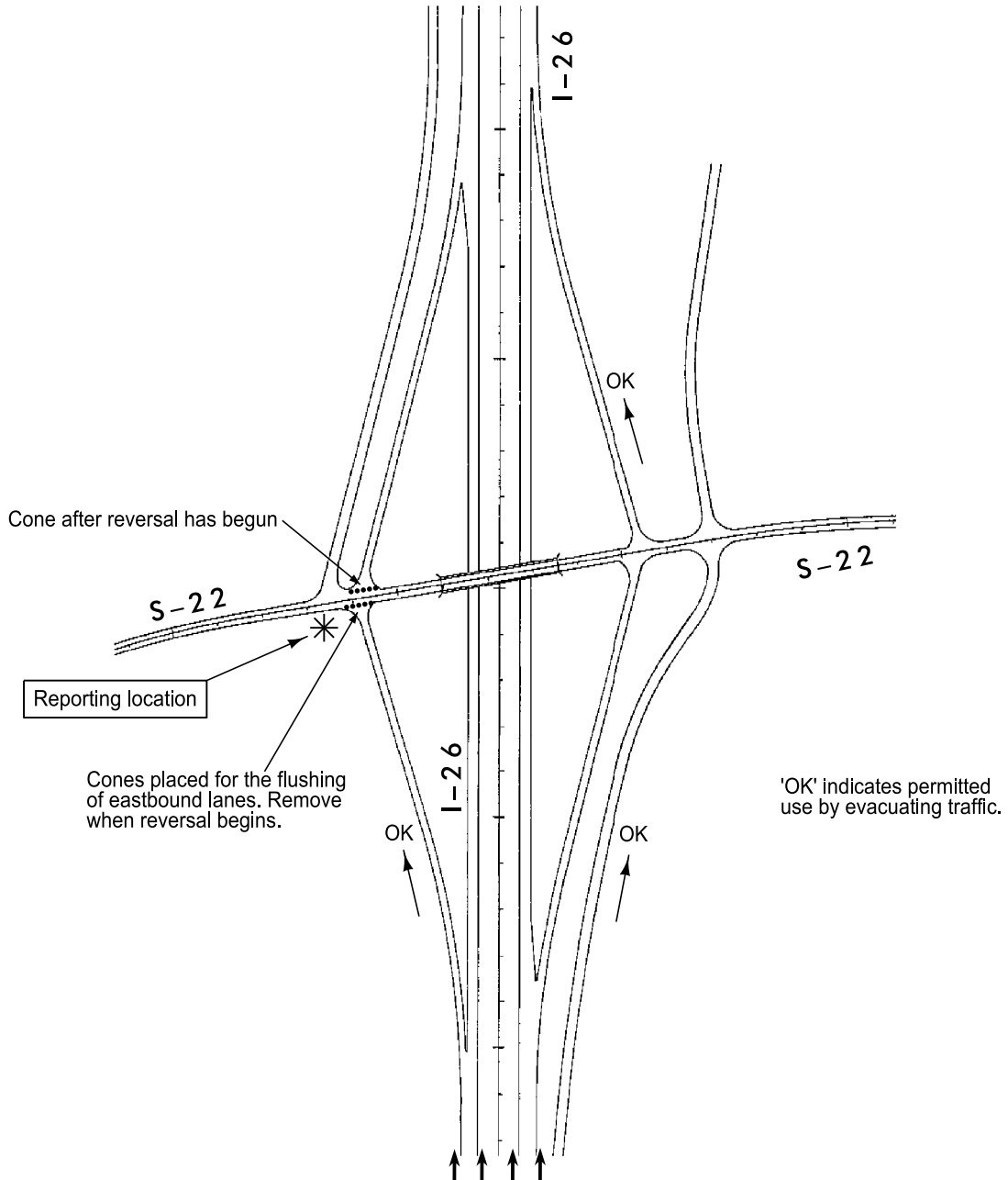
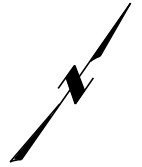
I-26 Reversal Operations

I-26 at S-22

REQUIRED ASSETS:

CONES	32
DOT PERSONNEL	3
LAW ENFORCEMENT PERSONNEL (24 HR)	6

EXIT 139



LEGEND

● TRAFFIC CONES

REVISED: 3/8/11

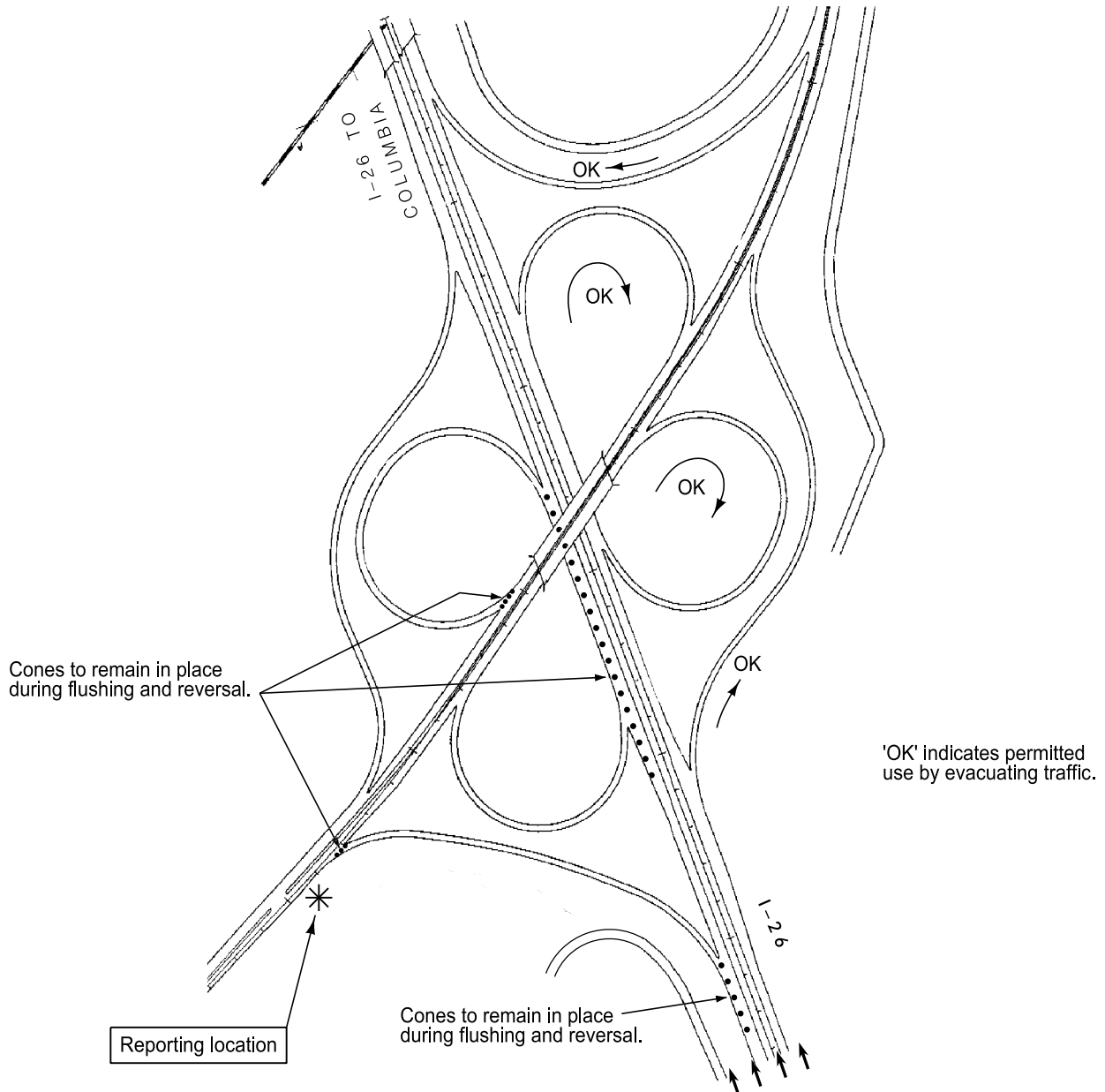
I-26 Reversal Operations

I-26 at US 601

REQUIRED ASSETS:

CONES	92
DOT PERSONNEL	6
LAW ENFORCEMENT PERSONNEL (24 HR)	6

EXIT 145



LEGEND

● TRAFFIC CONES

NO EXIT FROM REVERSED LANES

REVISED: 3/8/11

ORANGEBURG COUNTY
SCDOT

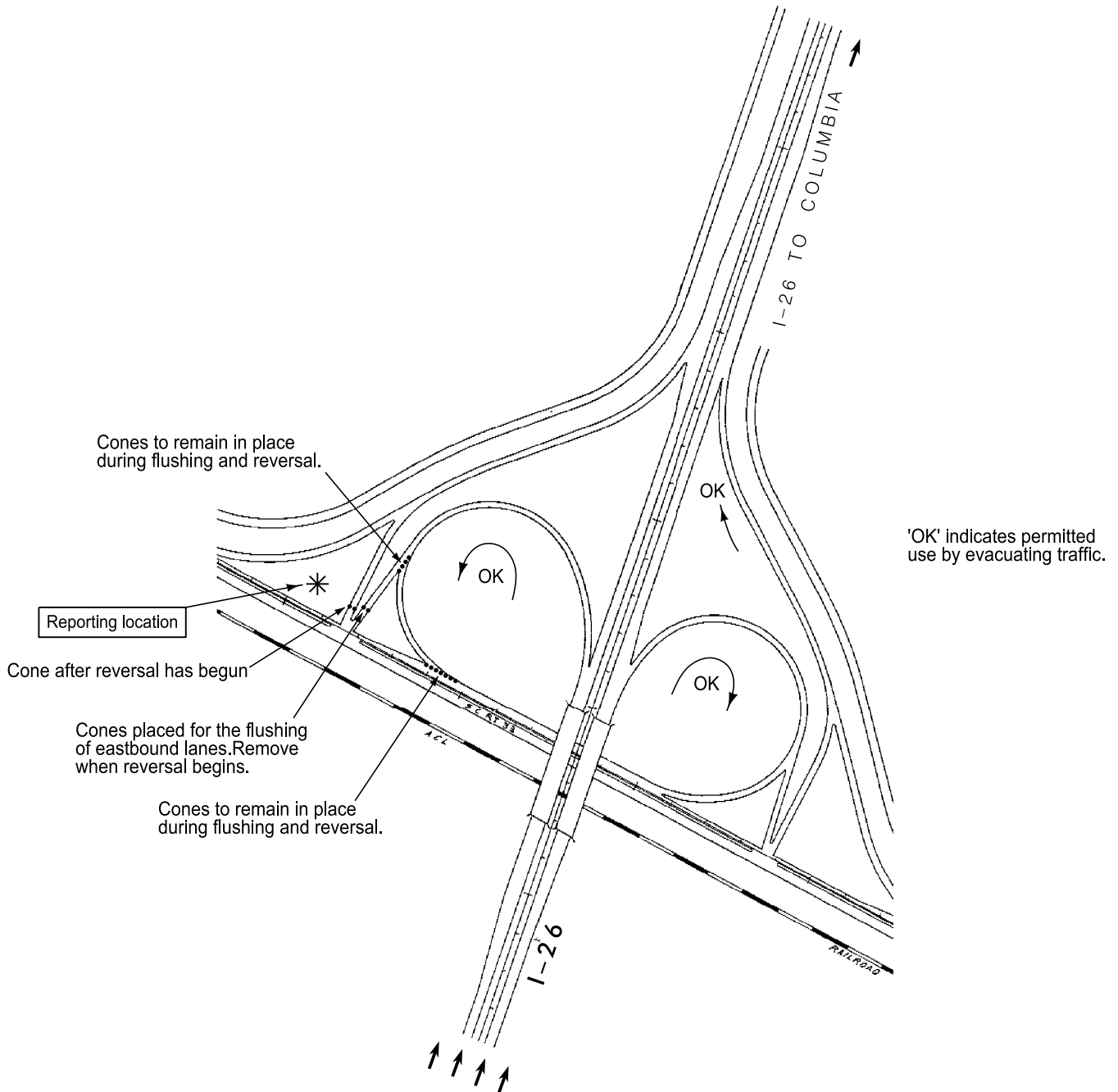
I-26 Reversal Operations

I-26 at SC 33

REQUIRED ASSETS:

CONES	40
DOT PERSONNEL	6
LAW ENFORCEMENT PERSONNEL (24 HR)	6

EXIT 149



LEGEND

● TRAFFIC CONES

REVISED: 3/16/11

ORANGEBURG COUNTY
SCDOT

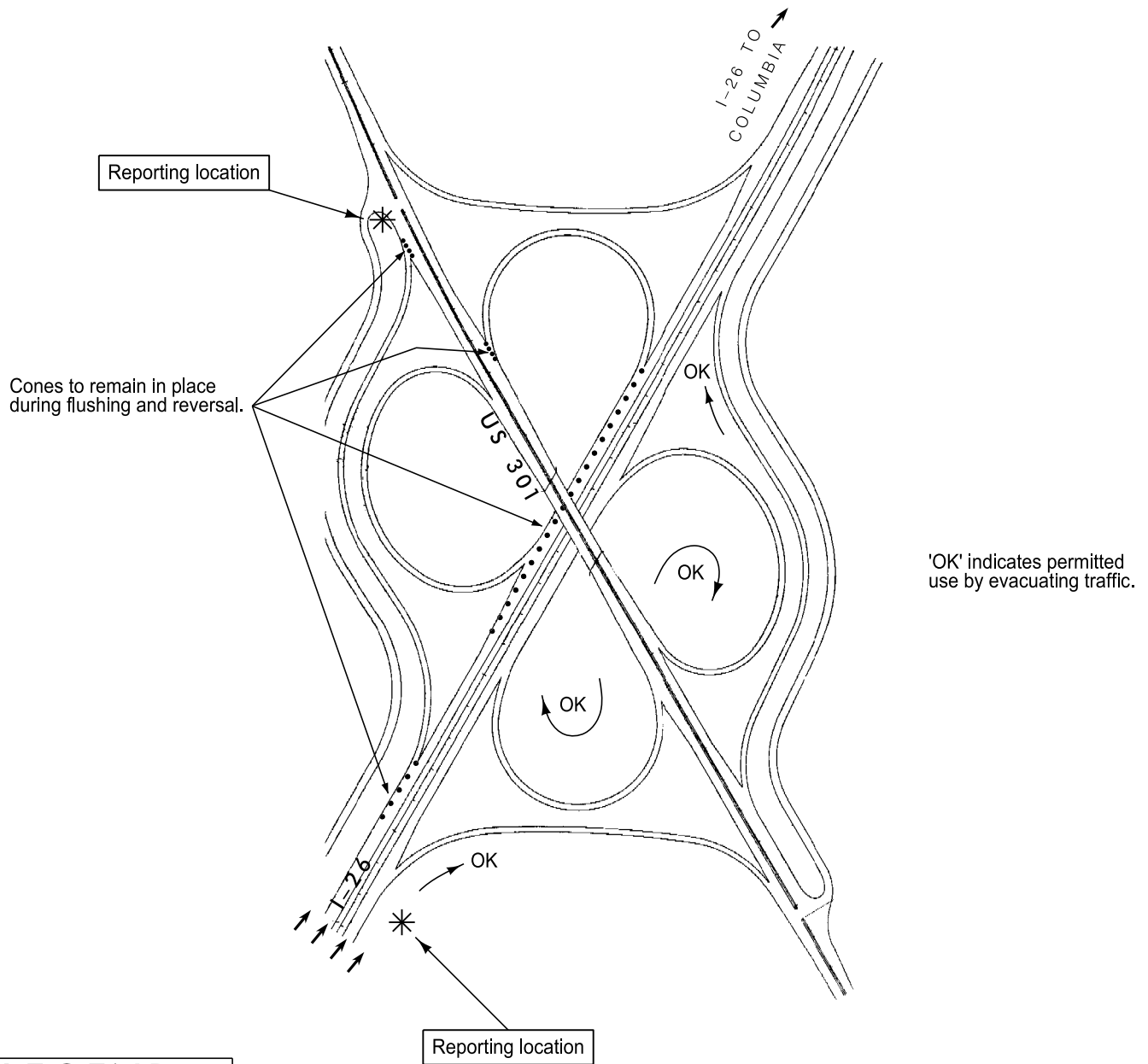
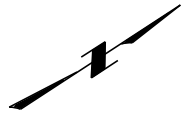
I-26 Reversal Operations

I-26 at US 301

REQUIRED ASSETS:

CONES	101
DOT PERSONNEL	7
LAW ENFORCEMENT PERSONNEL (24 HR)	6

EXIT 154



LEGEND

● TRAFFIC CONES

REVISED: 3/8/11

ORANGEBURG COUNTY
SCDOT

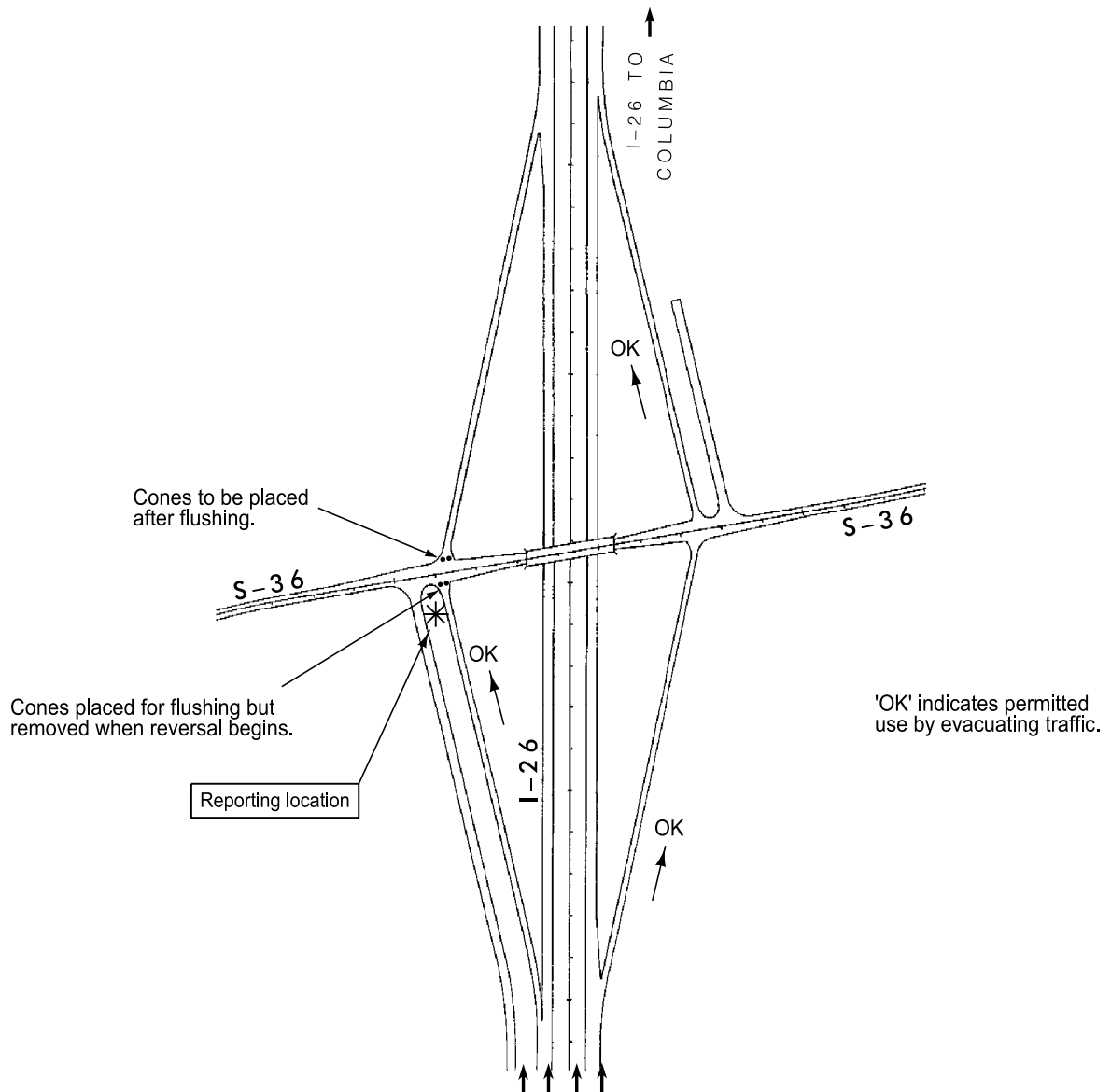
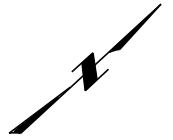
I-26 Reversal Operations

I-26 at S-36

REQUIRED ASSETS:

CONES	28
DOT PERSONNEL	4
LAW ENFORCEMENT PERSONNEL (24 HR)	6

EXIT 159



LEGEND

● TRAFFIC CONES

REVISED: 3/8/11

ORANGEBURG COUNTY
SCDOT

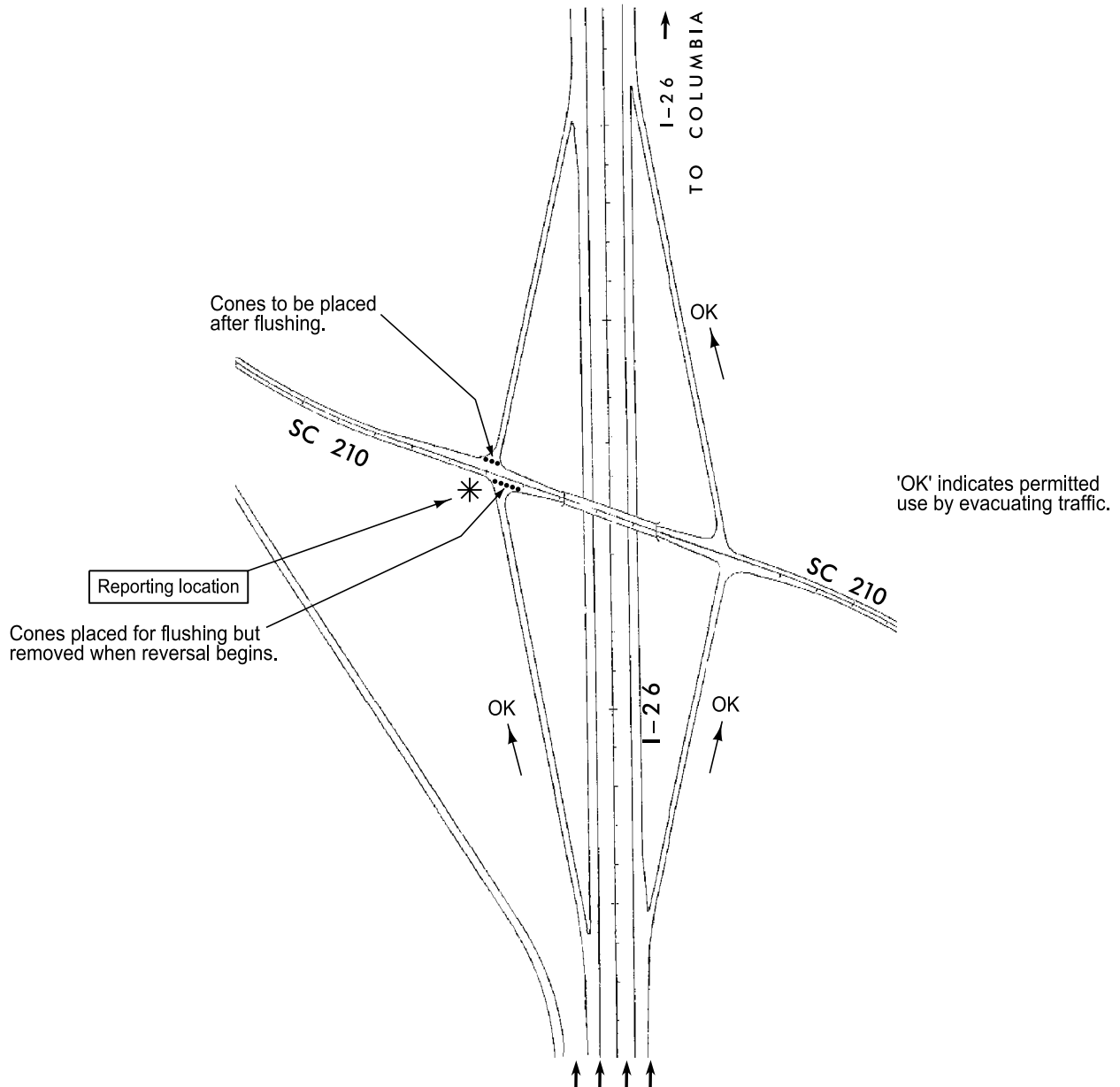
I-26 Reversal Operations

I-26 at SC 210

REQUIRED ASSETS:

CONES	40
DOT PERSONNEL	4
LAW ENFORCEMENT PERSONNEL (24 HR)	6

EXIT 165



LEGEND

● TRAFFIC CONES

REVISED: 3/8/11

ORANGEBURG COUNTY
SCDOT

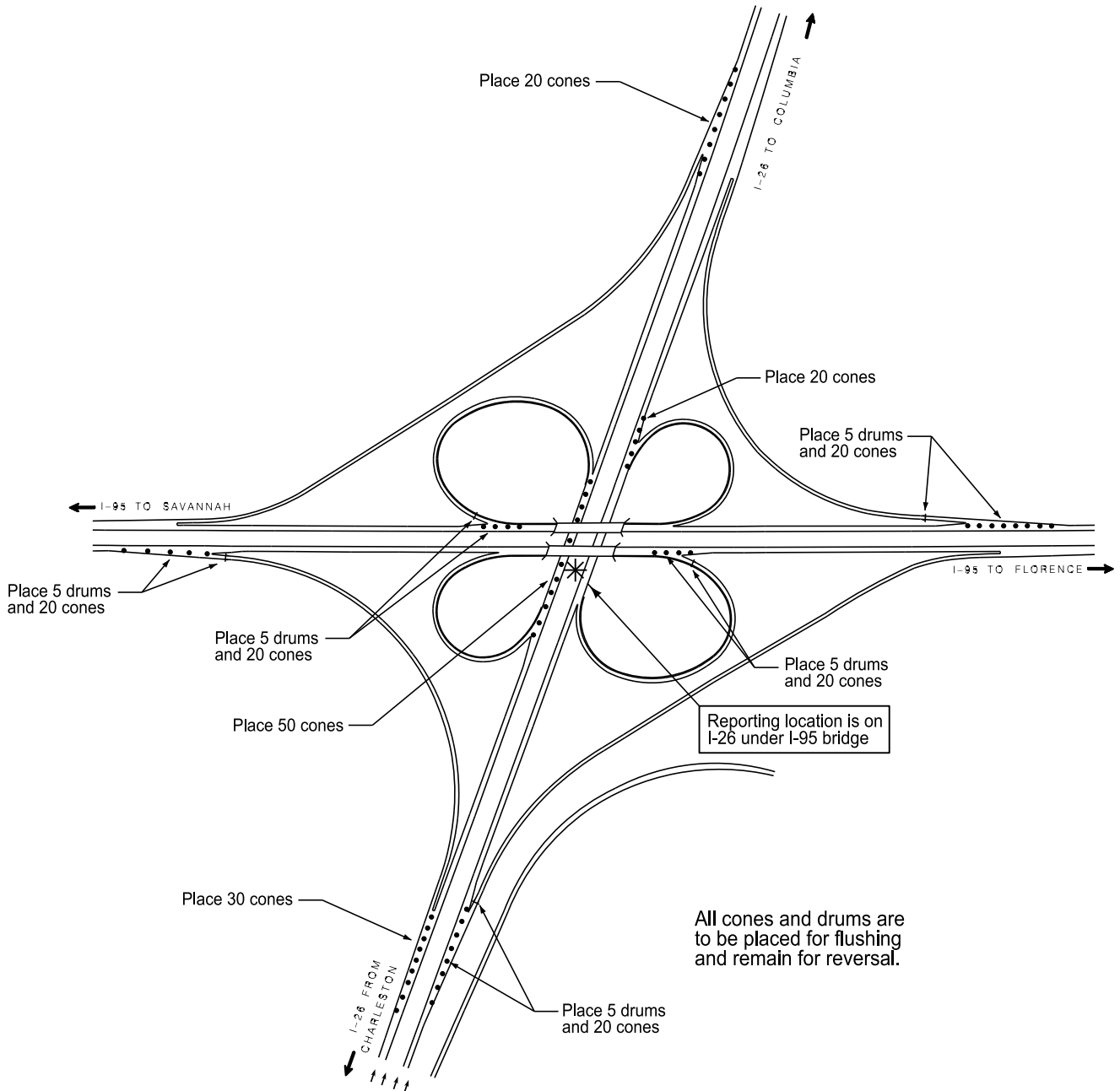
I-26 Reversal Operations

I-26 at I-95

REQUIRED ASSETS:

DRUMS	25
CONES	184
DOT PERSONNEL	7
LAW ENFORCEMENT PERSONNEL (24 HR)	12

EXIT 169



LEGEND

- TRAFFIC CONES
- ⋯ DRUMS

NO ACCESS FROM I-26 TO I-95
NO ACCESS FROM I-95 TO I-26

REVISED: 8/16/11

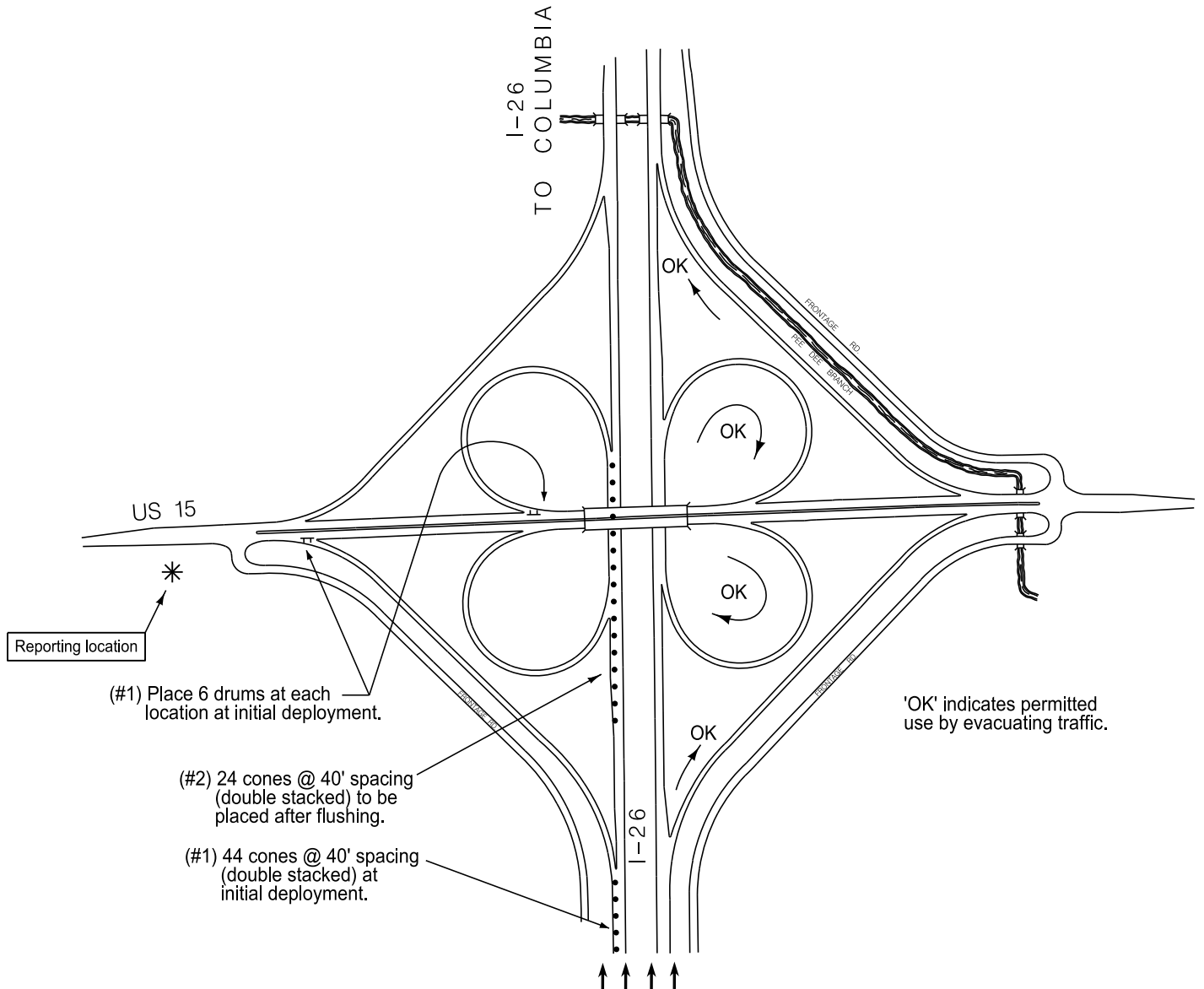
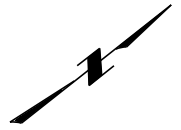
I-26 Reversal Operations

I-26 at US 15

REQUIRED ASSETS:

DRUMS	22
CONES	68
DOT PERSONNEL	5
LAW ENFORCEMENT PERSONNEL (24 HR)	8

EXIT 172



LEGEND

(#)	ASSET PLACEMENT PHASING
●	TRAFFIC CONES
⌞	DRUMS

NOTE: 10 DRUMS (5 ON EACH SIDE) TO BE PLACED @ CROSSOVER FOR M.P. 169.4

NO REVERSE LANE EXITS

REVISED: 3/8/11

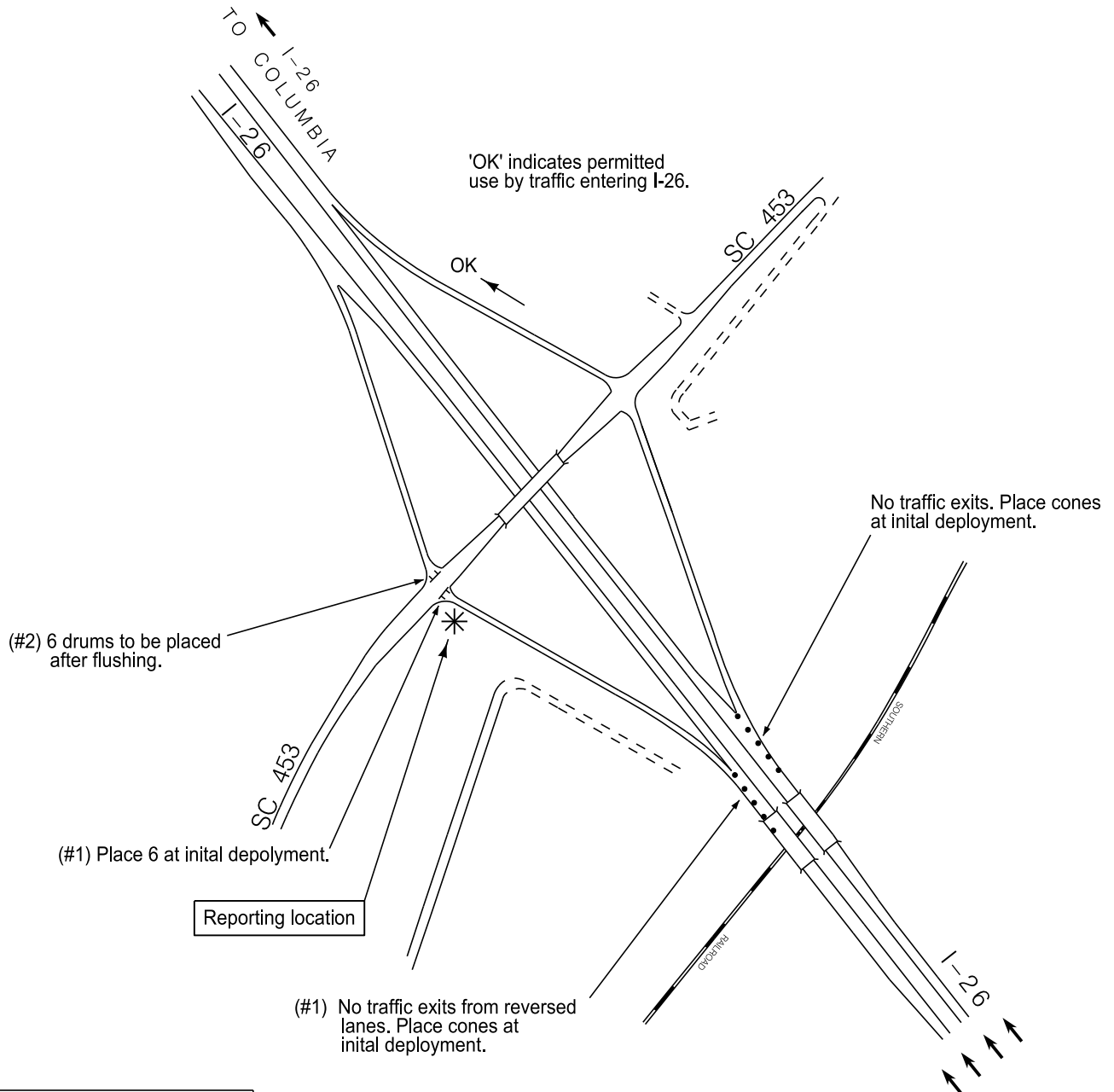
I-26 Reversal Operations

I-26 at SC 453

REQUIRED ASSETS:

DRUMS	12
CONES	50
DOT PERSONNEL	2
LAW ENFORCEMENT PERSONNEL (24 HR)	6

EXIT 177



LEGEND

(#)	ASSET PLACEMENT PHASING
●	TRAFFIC CONES
⚡	DRUMS

NO TRAFFIC EXITS DURING REVERSAL
AT THIS INTERCHANGE.

DORCHESTER COUNTY
SCDOT

REVISED: 3/8/11

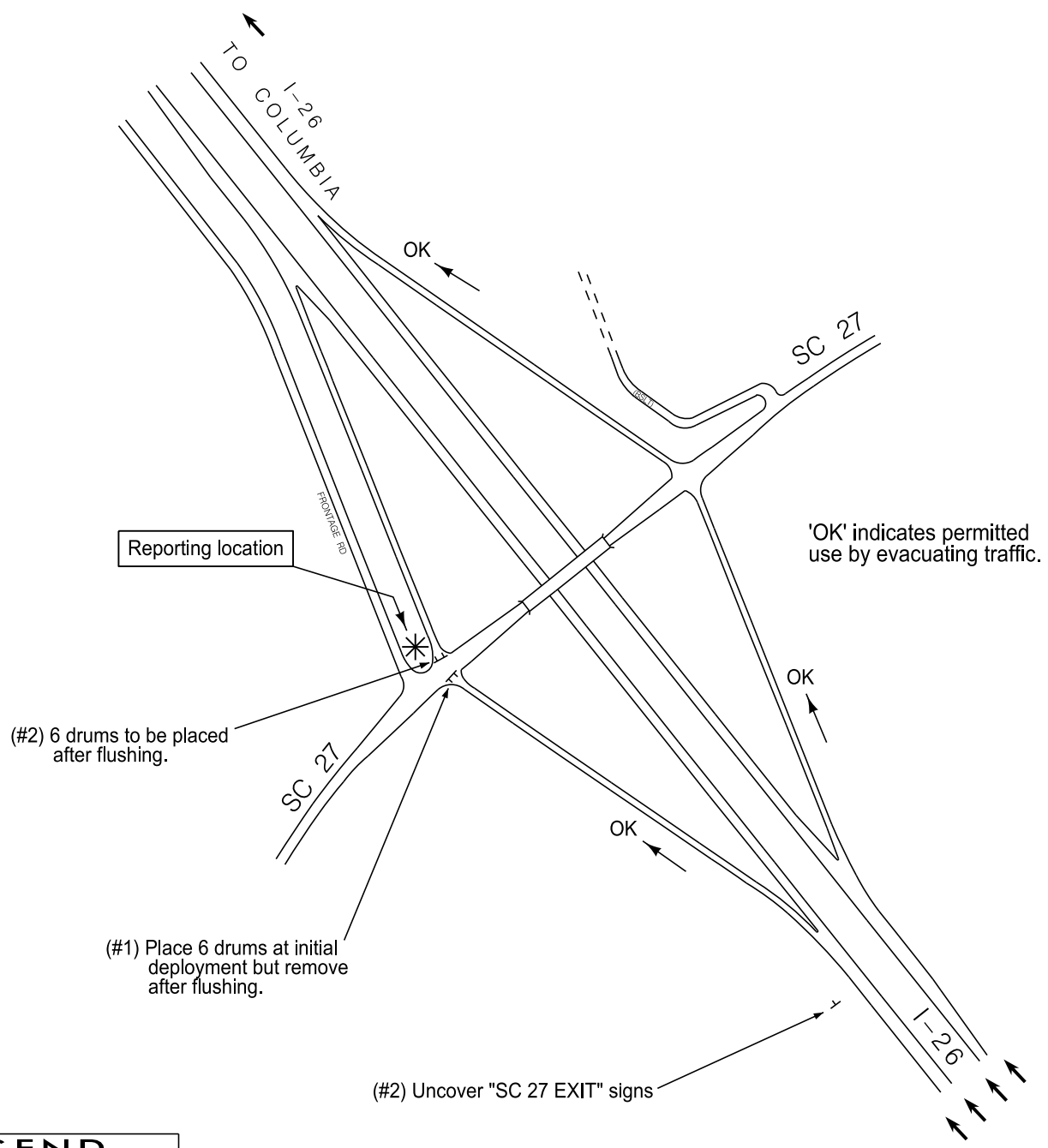
I-26 Reversal Operations

I-26 at SC 27

REQUIRED ASSETS:

DRUMS	12
DOT PERSONNEL	2
LAW ENFORCEMENT PERSONNEL (24 HR)	6

EXIT 187



LEGEND

- (#) ASSET PLACEMENT PHASING
- TRAFFIC CONES
- == DRUMS

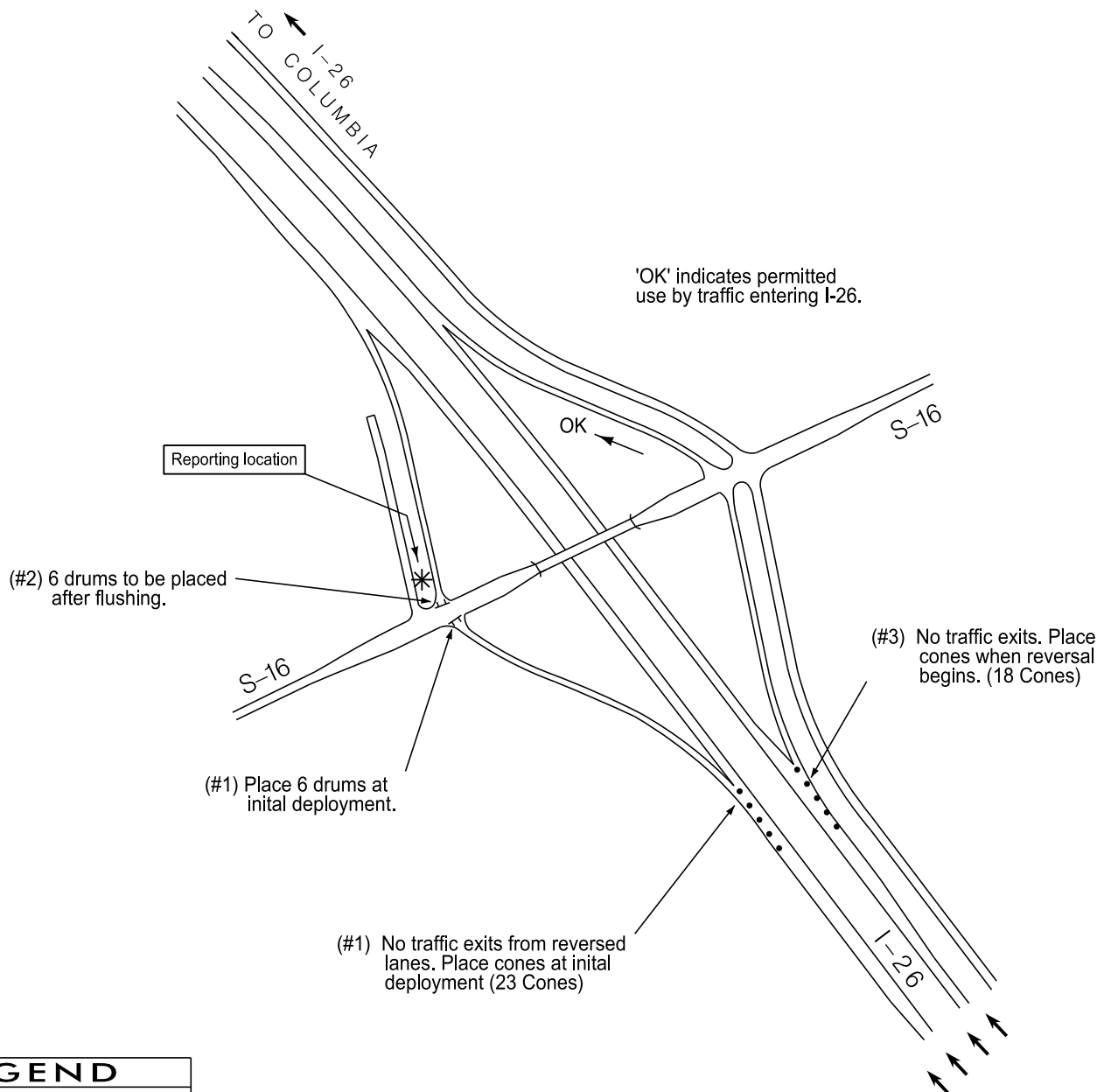
I-26 Reversal Operations

I-26 at S-16

REQUIRED ASSETS:

DRUMS	12
CONES	41
DOT PERSONNEL	2
LAW ENFORCEMENT PERSONNEL (24 HR)	6

EXIT 194



LEGEND

(#)	ASSET PLACEMENT PHASING
●	TRAFFIC CONES
⌌	DRUMS

NO TRAFFIC EXITS DURING REVERSAL
AT THIS INTERCHANGE.

REVISED: 3/8/11

BERKELEY COUNTY
SCDOT

EXIT 199

DRUMS	15
CONES	107
DOT PERSONNEL	6
LAW ENFORCEMENT PERSONNEL (24 HR)	10



REVISED: 3/8/11

I-26 Reversal Operations

I-26 at S-62 (College Park Road)

REQUIRED ASSETS:

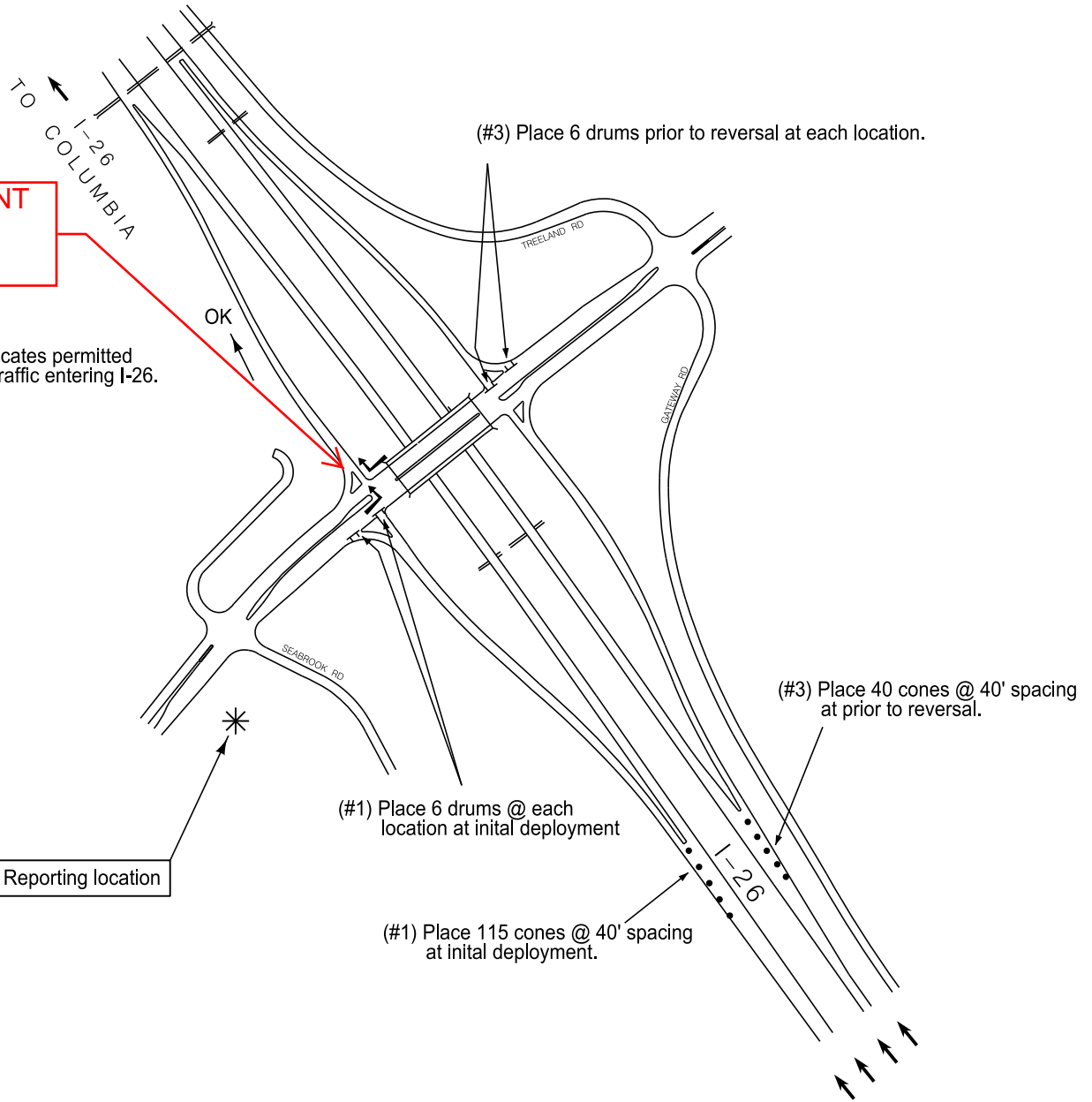
DRUMS	24
CONES	155
DOT PERSONNEL	4
LAW ENFORCEMENT PERSONNEL (24 HR)	6

EXIT 203



**INGRESS POINT
FOR LANE
REVERSAL**

'OK' indicates permitted use by traffic entering I-26.



LEGEND

(#)	ASSET PLACEMENT PHASING
●	TRAFFIC CONES
⊥	DRUMS

REVERSE LANE LOADING
NO TRAFFIC EXITS DURING REVERSAL
AT THIS INTERCHANGE

REVISED: 3/8/11

BERKELEY COUNTY
SCDOT

I-26 Reversal Operations

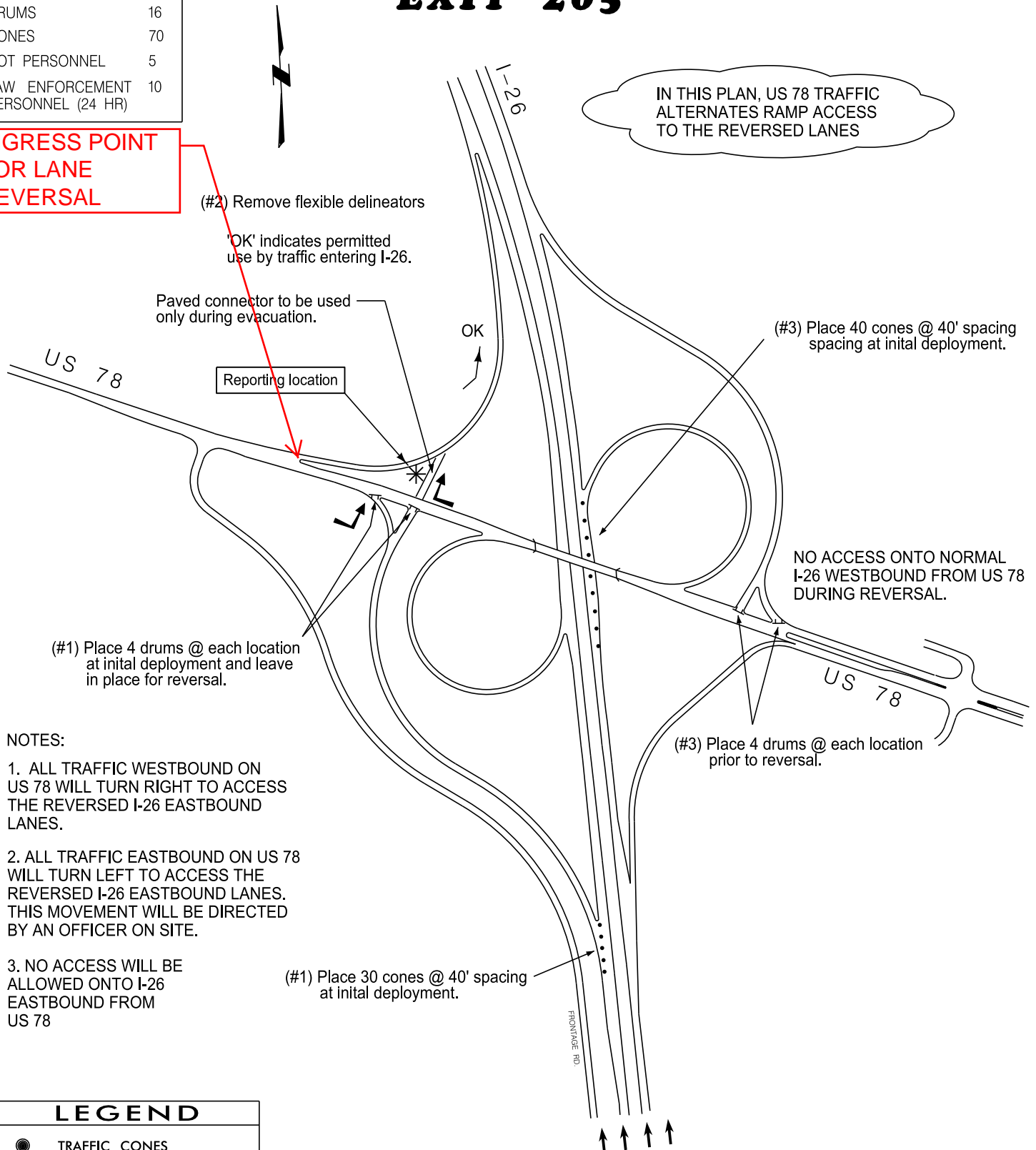
I-26 at US 78

REQUIRED ASSETS:

DRUMS	16
CONES	70
DOT PERSONNEL	5
LAW ENFORCEMENT PERSONNEL (24 HR)	10

INGRESS POINT FOR LANE REVERSAL

EXIT 205



NOTES:

1. ALL TRAFFIC WESTBOUND ON US 78 WILL TURN RIGHT TO ACCESS THE REVERSED I-26 EASTBOUND LANES.
2. ALL TRAFFIC EASTBOUND ON US 78 WILL TURN LEFT TO ACCESS THE REVERSED I-26 EASTBOUND LANES. THIS MOVEMENT WILL BE DIRECTED BY AN OFFICER ON SITE.
3. NO ACCESS WILL BE ALLOWED ONTO I-26 EASTBOUND FROM US 78

LEGEND

- TRAFFIC CONES
- ⊥ DRUMS

REVERSE LANE LOADING

REVISED: 3/8/11

I-26 Reversal Operations

I-26 at Ashley Phosphate Road and US 52 Conn.

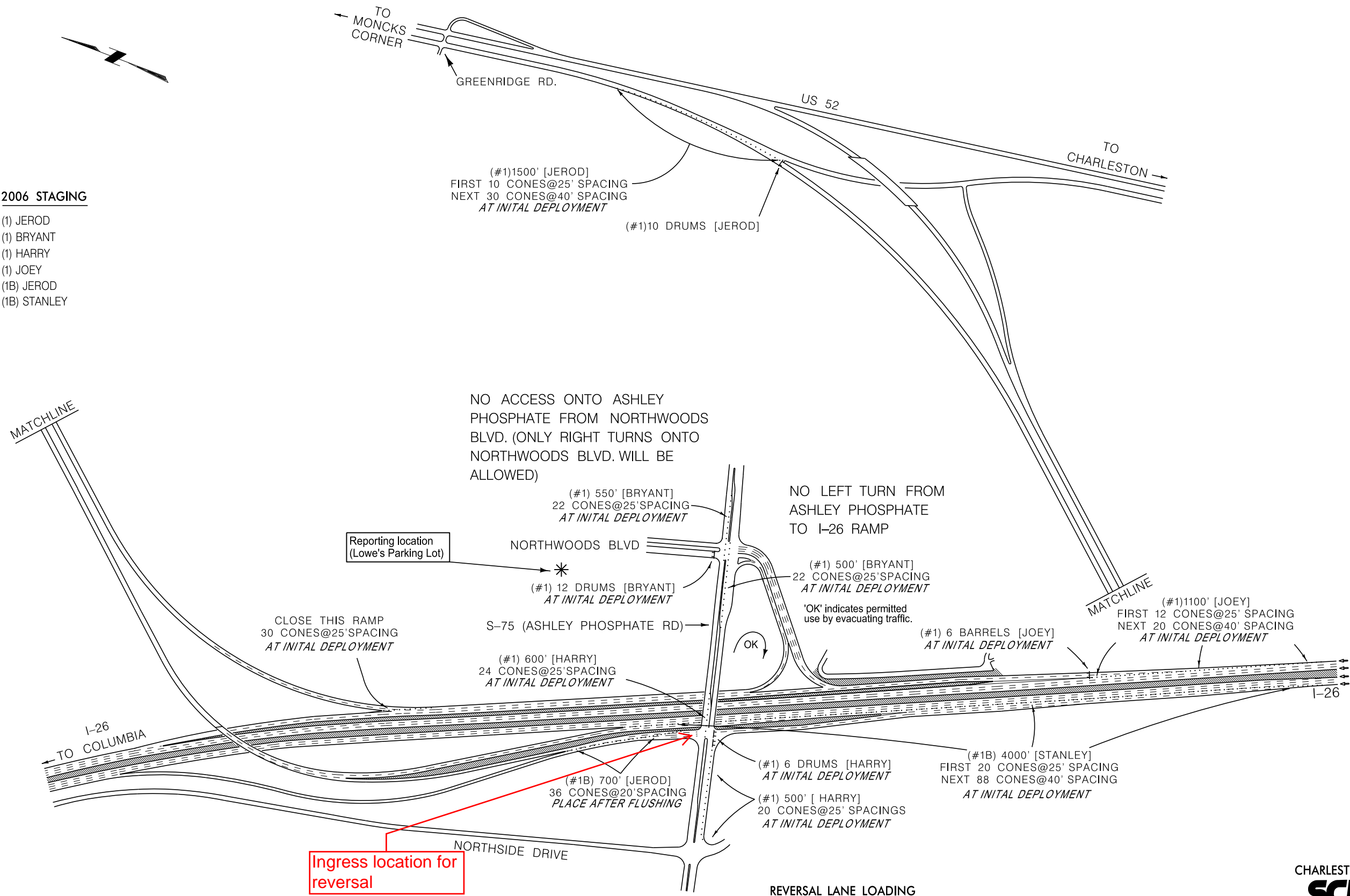
EXITS 208, 209A, and 209B

REQUIRED ASSETS:

DRUMS	34
CONES	334
DOT PERSONNEL (Per Shift)	20
LAW ENFORCEMENT PERSONNEL (24 HR)	22

2006 STAGING

- (1) JEROD
- (1) BRYANT
- (1) HARRY
- (1) JOEY
- (1B) JEROD
- (1B) STANLEY



LEGEND	
(#)	ASSET PLACEMENT PHASING
●	TRAFFIC CONES
⋯	DRUMS

REVISED: 3/8/11

I-26 Reversal Operations

I-26 at Aviation Avenue

REQUIRED ASSETS:

DRUMS	20
CONES	60
DOT PERSONNEL	4
LAW ENFORCEMENT PERSONNEL	4

EXIT 211



Place 25 cones
after flushing

Place 4 drums
after flushing

Place 4 drums at
initial deployment

NO ACCESS FROM US 52
TO AVIATION AVE.

Reporting location

Place 4 drums at
initial deployment

Place 4 drums at
initial deployment

LEGEND

-  TRAFFIC CONES
-  DRUMS

NO ACCESS TO I-26 FROM THIS
INTERCHANGE DURING REVERSAL

CHARLESTON COUNTY
SCDOT

REVISED: 3/16/11

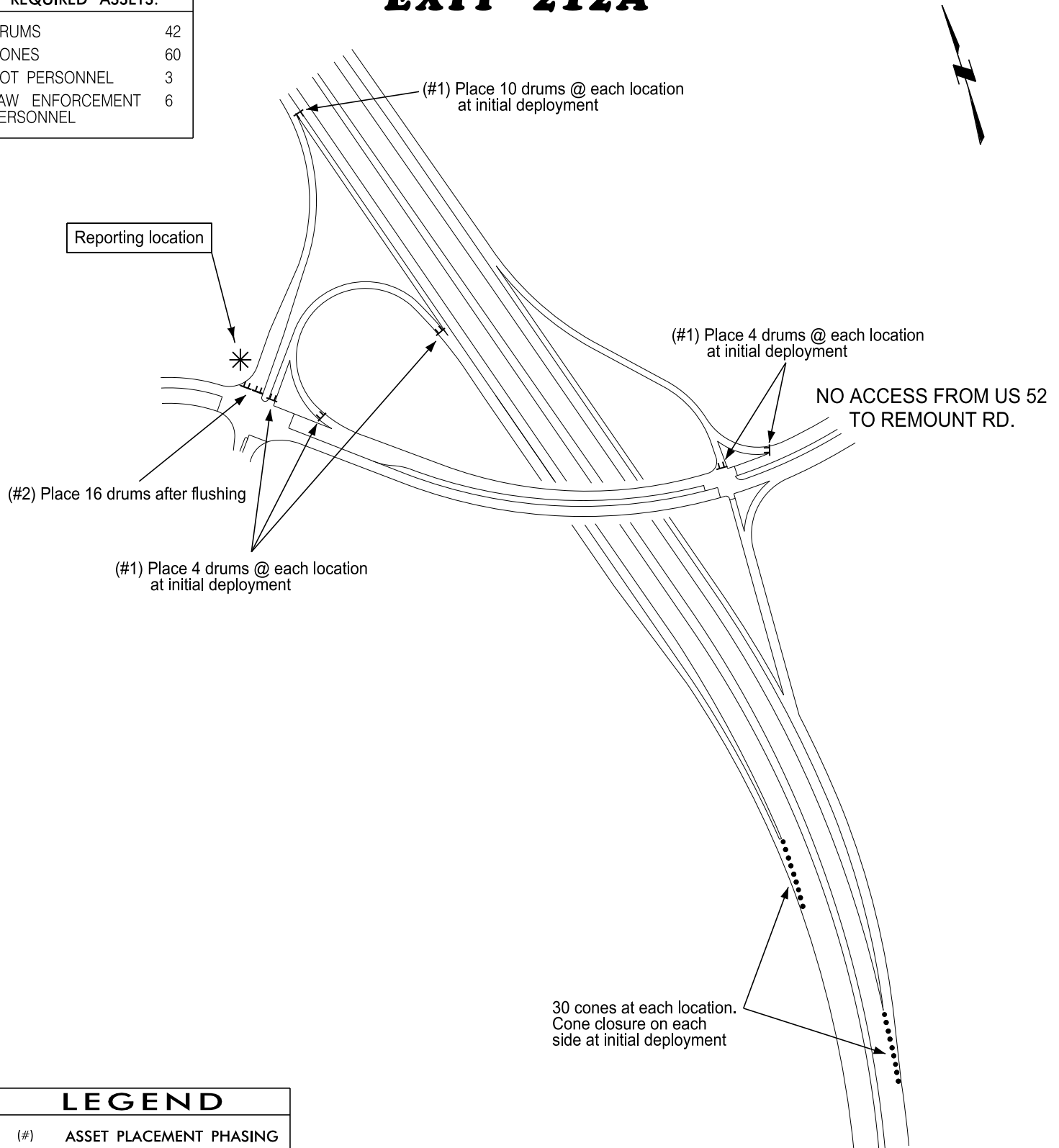
I-26 Reversal Operations

I-26 at Remount Road

REQUIRED ASSETS:

DRUMS	42
CONES	60
DOT PERSONNEL	3
LAW ENFORCEMENT PERSONNEL	6

EXIT 212A



REVISED: 6/17/11

NO ACCESS TO I-26 FROM THIS
INTERCHANGE DURING REVERSAL

CHARLESTON COUNTY
SCDOT

I-26 Reversal Operations

I-26 at I-526

EXIT 212B and 212C

REQUIRED ASSETS		
	CREW 1	CREW 2
DRUMS	20	28
CONES	140	75
DOT PERSONNEL	3	3
LAW ENFORCEMENT PERSONNEL (24 HR)	14	

INGRESS POINT FOR LANE REVERSAL

EVACUATION CROSSOVER

Reporting Location

CREW 1

Place prior to reversal but after flushing
(#2) 20 CONES
(#2) 4 DRUMS

CREW 1

Place prior to reversal but after flushing
(#2) 26 CONES

CREW 1

Place after flushing
(#2) 12 DRUMS

CREW 1

Place prior to reversal but after flushing
(#2) 4 DRUMS

I-526 TO MT. PLEASANT

CREW 1

Place prior to reversal but after flushing
(#2) 26 CONES

CREW 2

Place prior to reversal but after flushing
(#2) 75 CONES

CREW 2

Place prior to reversal but after flushing
(#2) 8 DRUMS AT EACH LOCATION

CREW 2

Place after flushing
(#2) 4 DRUMS

EVACUATION CROSSOVER

CREW 2

(#2) 8 DRUMS

LEGEND

- (#) ASSET PLACEMENT PHASING
- TRAFFIC CONES
- ⬇ DRUMS

INGRESS POINT FOR LANE REVERSAL

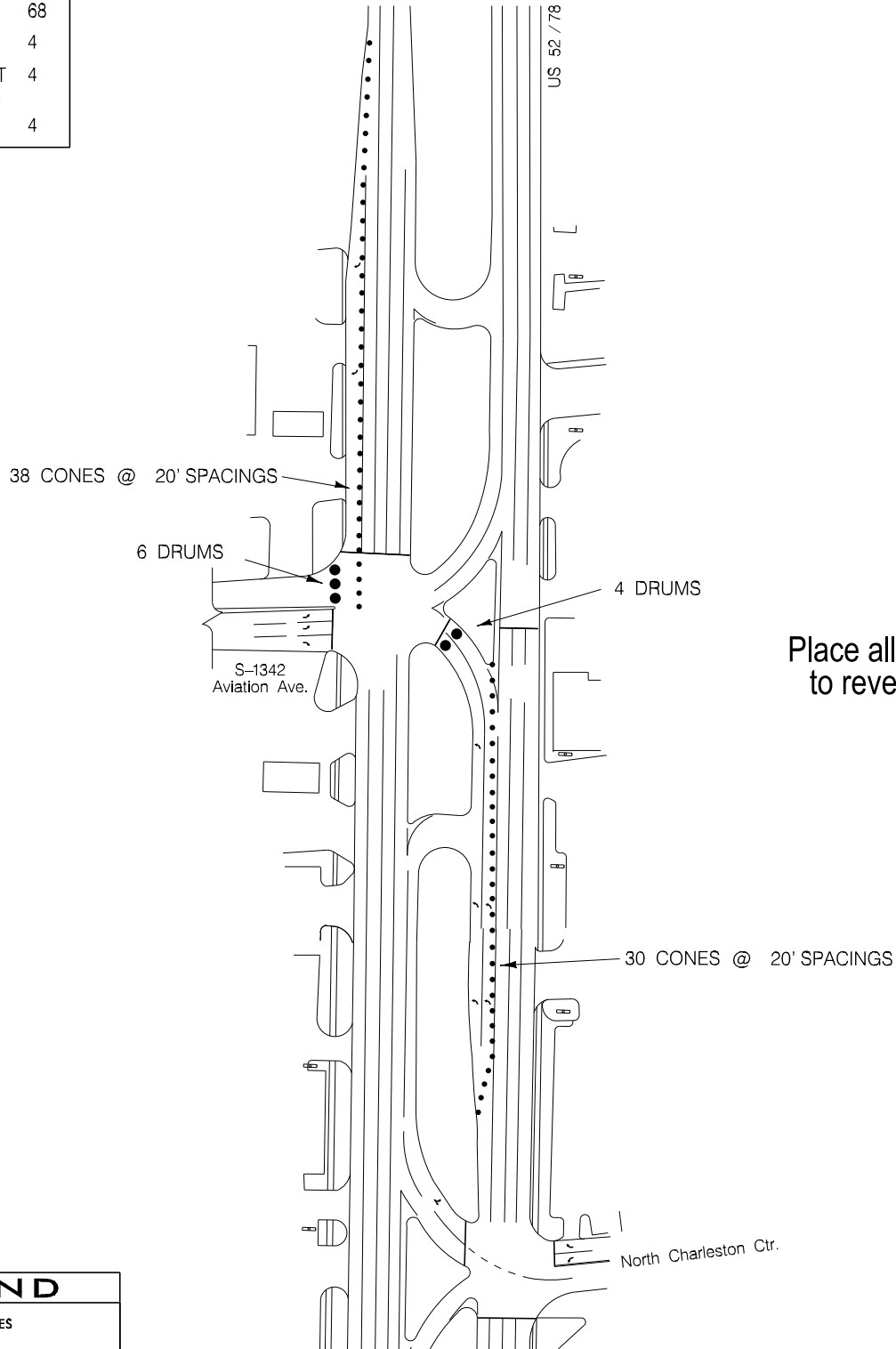
REVERSE LANE LOADING

I-26 Reversal Operations

US 52/78 at S-1342 Aviation Avenue

REQUIRED ASSETS:

DRUMS	10
CONES	68
DOT PERSONNEL	4
LAW ENFORCEMENT PERSONNEL (24 HR)	4
NATIONAL GUARD	4



Place all assets prior to reversal of I-26

LEGEND

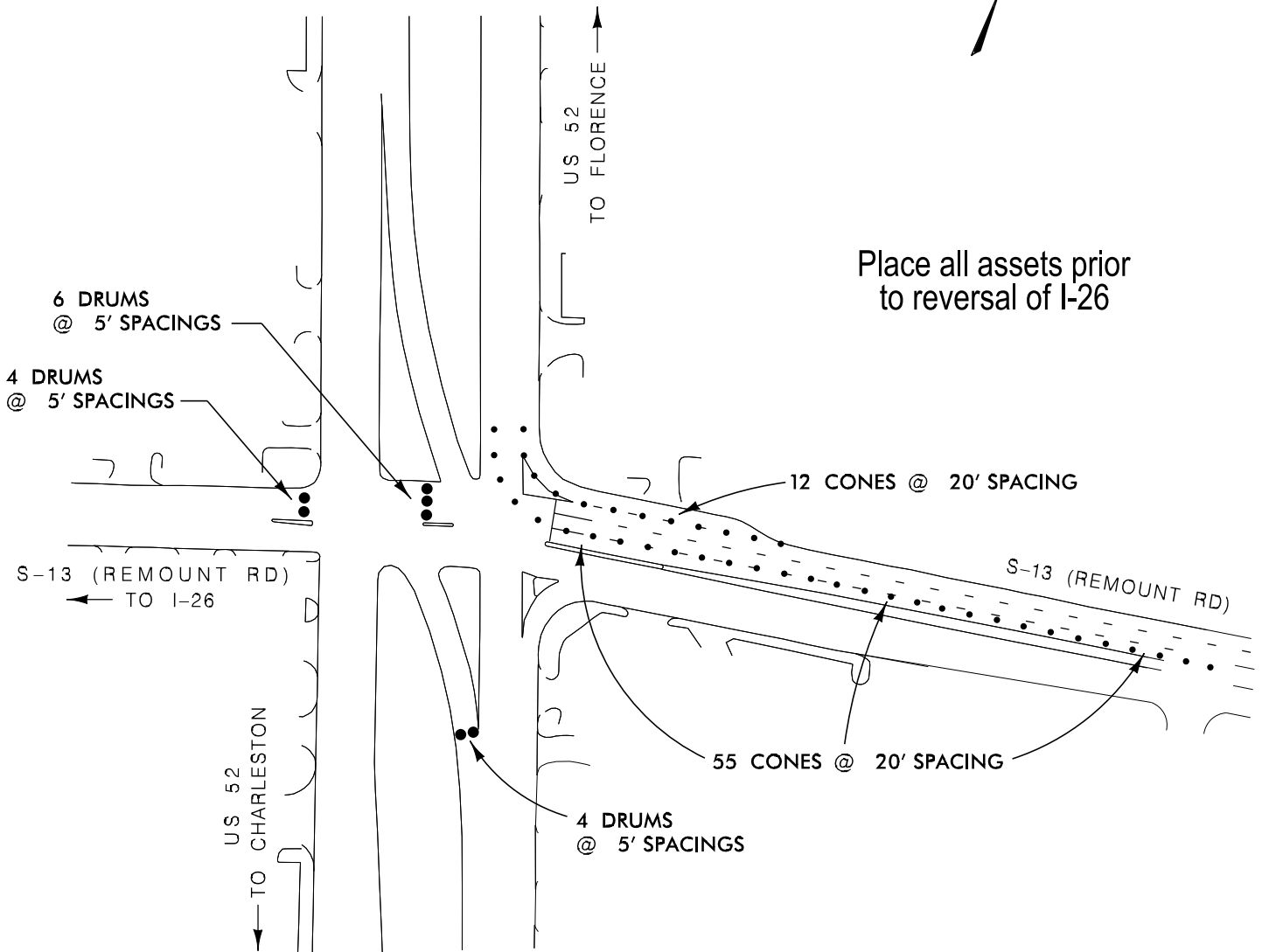
- TRAFFIC CONES
- DRUMS

REVISED: 3/8/11

I-26 Reversal Operations US 52 at S-13 (Remount Rd.)

REQUIRED ASSETS:

DRUMS	14
CONES	67
DOT PERSONNEL	4
LAW ENFORCEMENT PERSONNEL (24 HR)	4
NATIONAL GUARD	4



LEGEND

- TRAFFIC CONES
- DRUMS

REVISED: 3/8/11