



Virtual Exchange: NYS Bridge Strike Task Force Initiative

December 15, 2023

Welcome

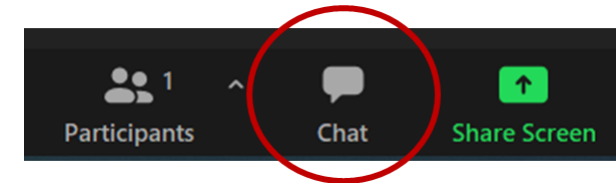
- We are using **Zoom Meeting**
- **VIDEO:** You are welcome to turn on your camera *during the Q&A session* by pressing the camera icon in the bottom left corner of your screen
- **AUDIO (Computer):** Use your computer speakers and microphone by clicking the “Join Audio” button at the bottom left of the screen.
- **Alternate Audio (Phone):** Call into the meeting by dialing the phone number based on your location (provided in the confirmation email) and enter the Meeting ID at the prompt.
- Please keep your line muted when you are not speaking.
- **This web meeting is being recorded for internal purposes.**
- **Questions** with the audio or web? Please contact Esther directly via the chat box or email (ekleit@kmjinc.com)



Asking Questions in Zoom Meeting

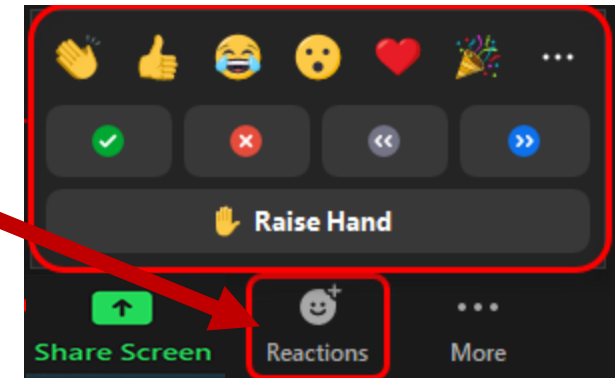
- **In the Chat Box**

- You may pose your question using the Chat Box. Click on the chat icon at the bottom of your screen

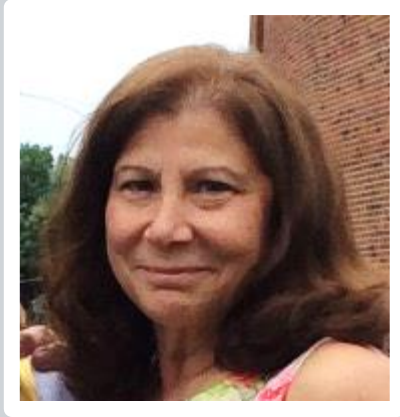


- **Verbally**

- Please raise your hand (click on the reactions button at the bottom of the screen then select the “Raise Hand” button), then you can unmute your line.
- Please give your name and organization before asking your question.
- All questions will be monitored and answered at the end of the session.
- Please mute yourself when you are finished speaking.



Welcome



Marygrace Parker, Freight Program Director
The Eastern Transportation Coalition

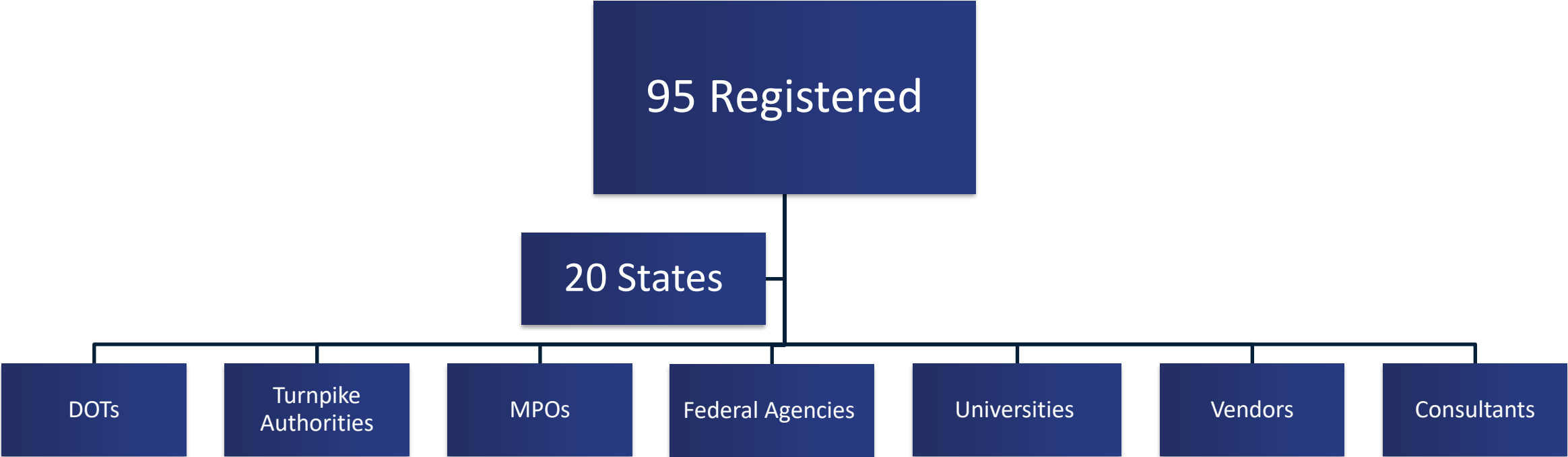


Agenda

Topic	Speaker
Welcome & Introductions	Marygrace Parker, Freight Program Director, The Eastern Transportation Coalition
Opening Remarks	Commissioner Marie Therese Dominguez, New York State DOT
NYS Bridge Strike Task Force Initiative <ul style="list-style-type: none">• Background of the Problem• Engineering Approach• Crash Analysis• Task Force – Enforcement and Education Campaign• Lessons Learned/Next Steps	Rob Limoges, Director, Office of Traffic Safety and Mobility, New York State DOT Daniel Carey, Professional Engineer, New York State DOT
Q&A and Polling Discussion with States	Q&A facilitated by Marygrace Parker
Next Steps	Marygrace Parker



The Eastern Transportation Coalition Sponsored Event



Opening Remarks



Commissioner Marie Therese Dominguez
New York State DOT



New York State Bridge Strike Task Force Work: *Bridge Hit Mitigation*



Rob Limoges

Director, Office of Traffic Safety and Mobility
New York State DOT



Daniel Carey

Professional Engineer
New York State DOT

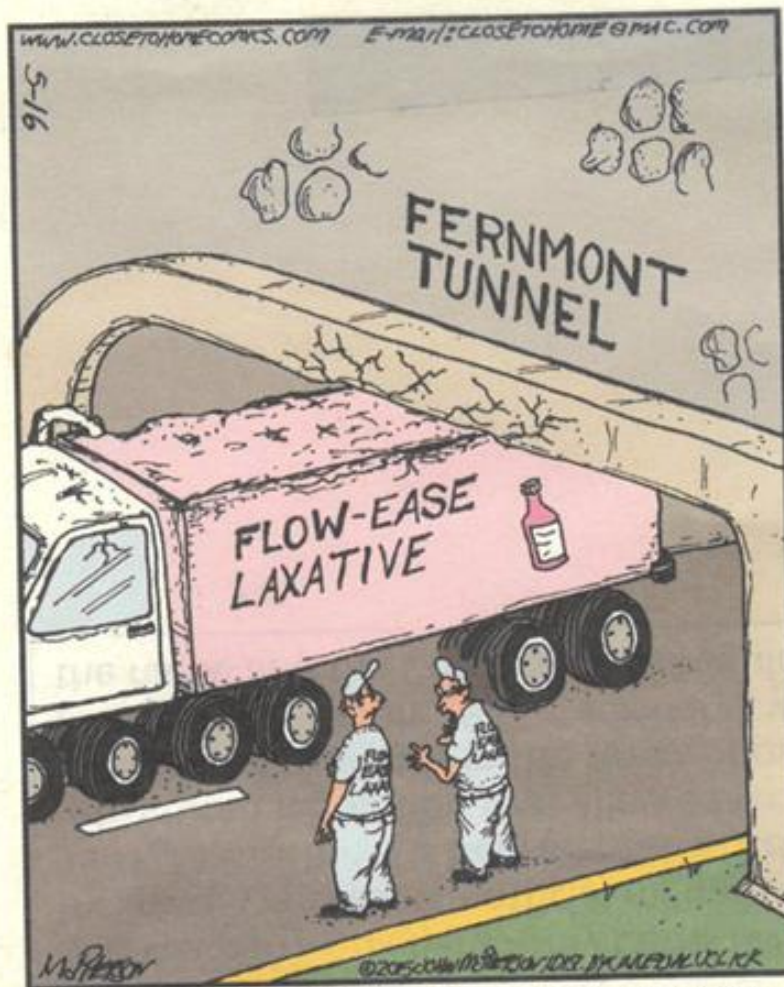


Bridge Hit Mitigation



Dan Carey, P.E.
Office of Traffic Safety & Mobility
New York State Department of Transportation

December 15, 2023



"For the third time, yes, I get how ironic it is that the truck is stuck in the tunnel!"

**CLOSE
TO HOME**

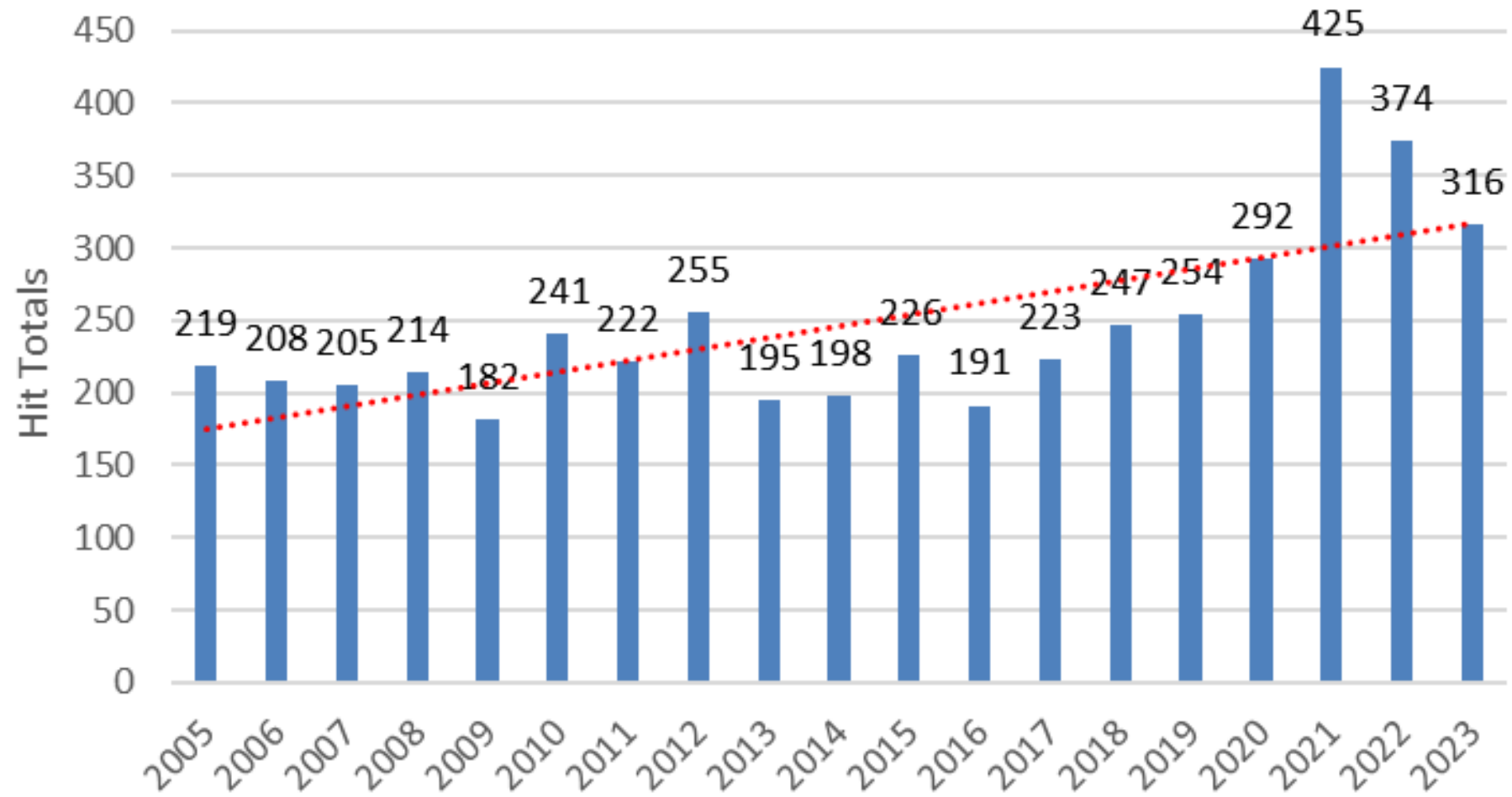
**MON
MAY
15**

Agenda:

1. Background of the Problem
2. Engineering Approach
3. Crash Analysis
4. Task Force – Enforcement and Education Campaign
5. Lessons Learned/Next Steps



NYS Annual Bridge Hits Totals



Background of the Problem: Infrastructure

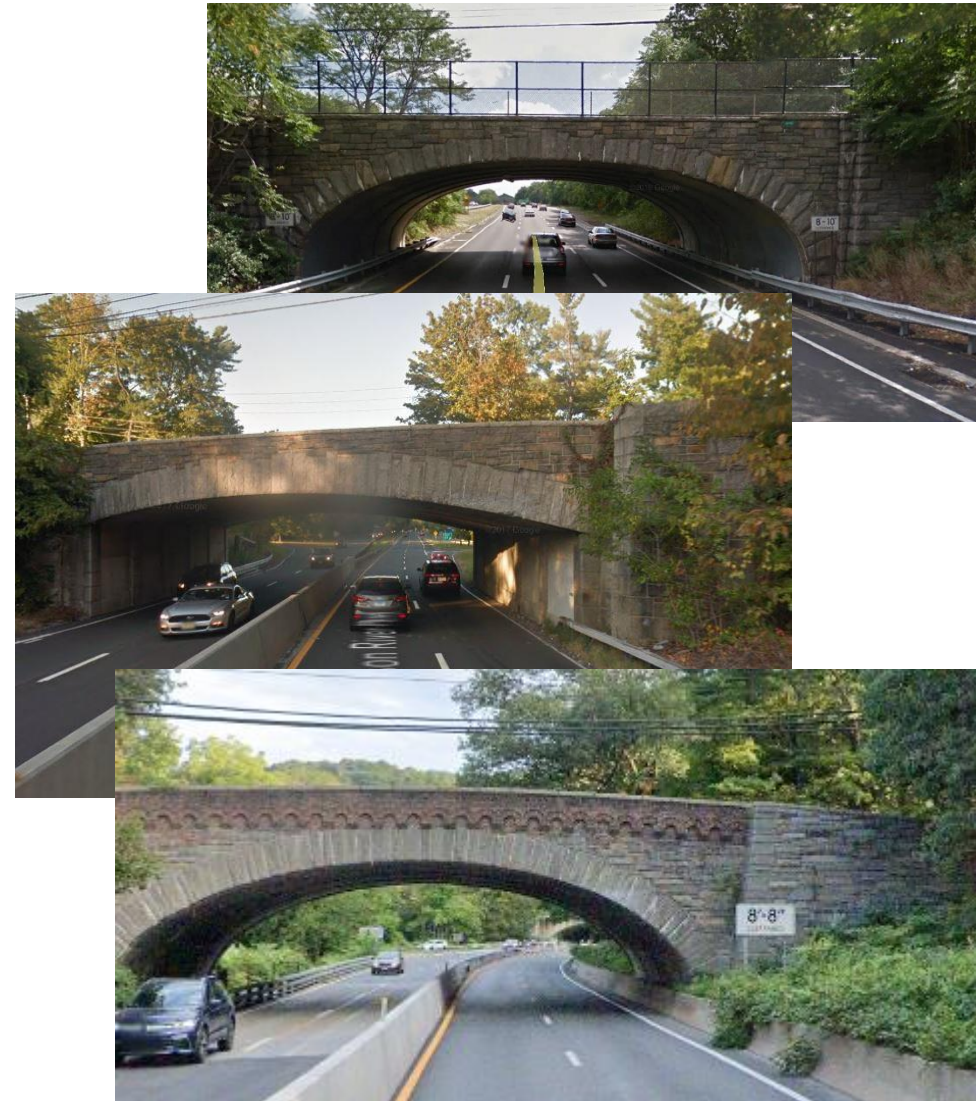
NYS Parkways:

- Narrow Lanes,
- Lack Shoulders,
- Meandering alignments, and
- LOW bridges

Commercial vehicles are

PROHIBITED

And yet...

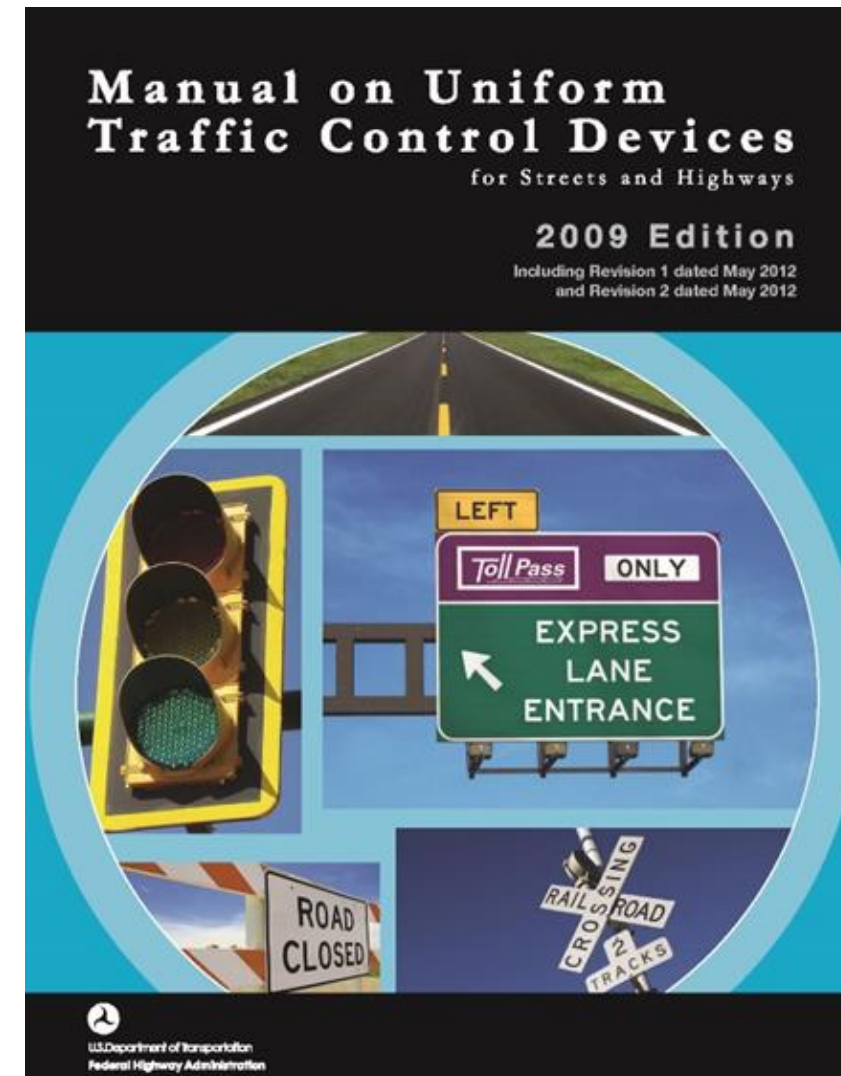
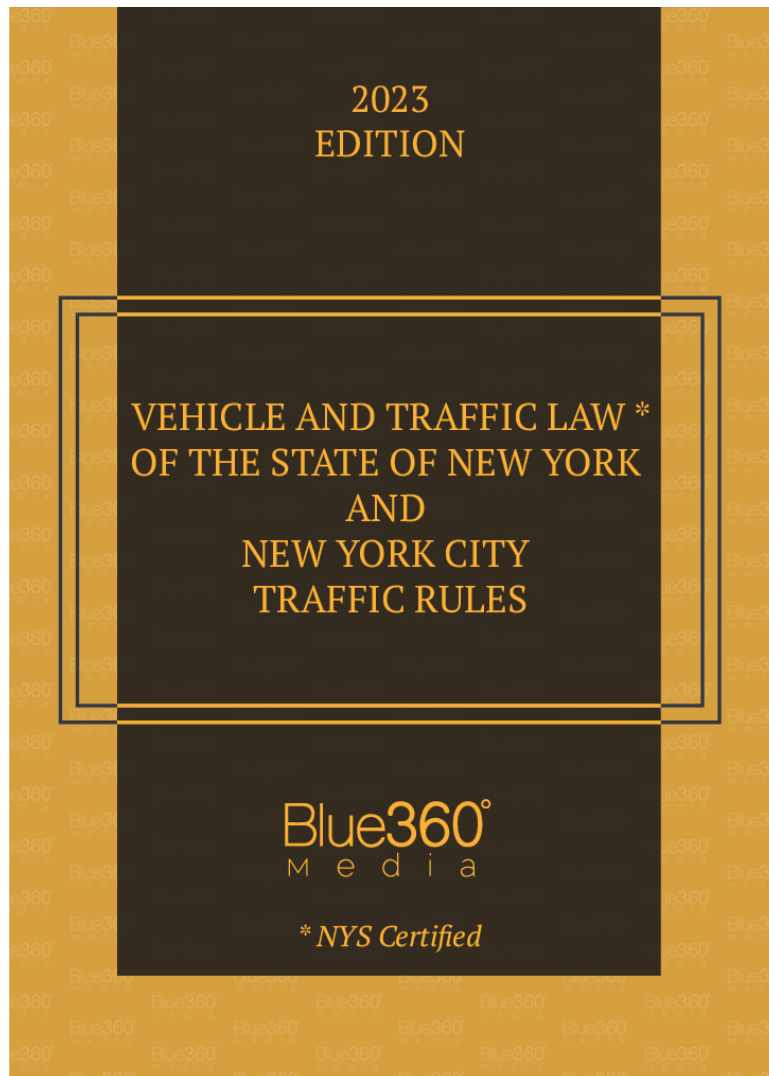




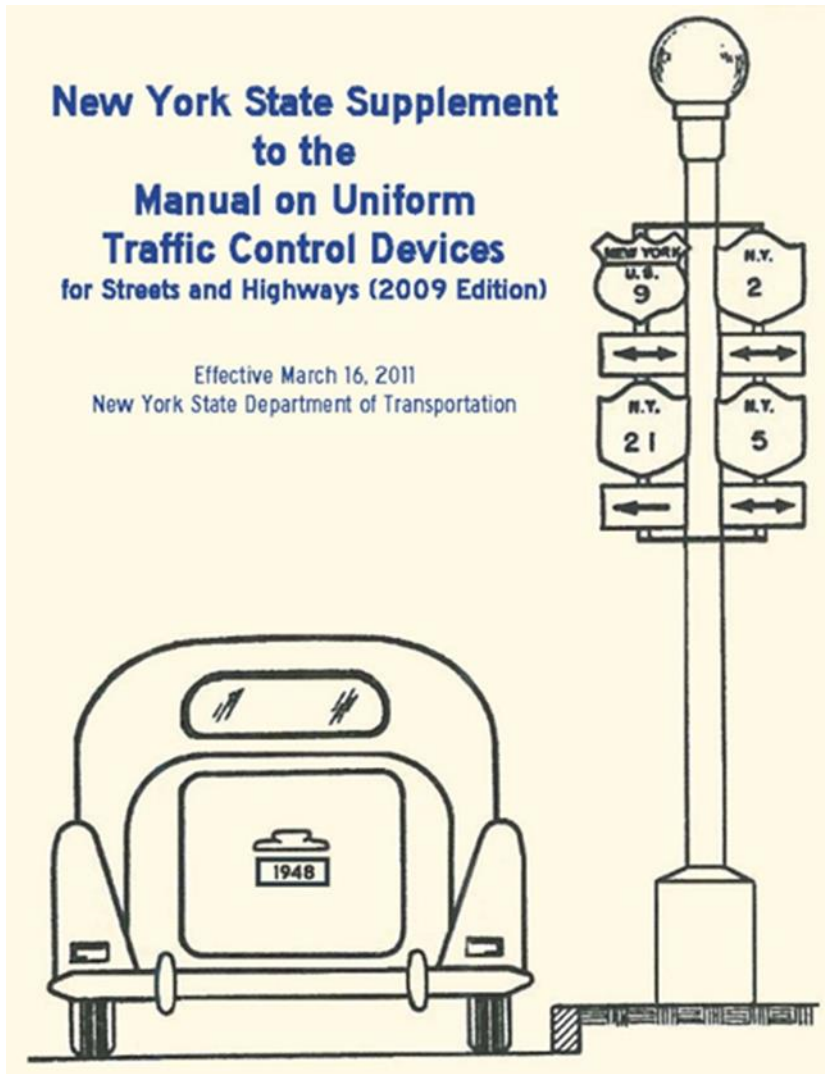
BUT
it's not JUST an arch bridge problem...



Engineering Approach



Engineering Approach – Requirements



In Advance of Bridge:



At the Bridge:



At entrances to restricted facilities:



Engineering Approach – NYSDOT Policy & Initiative

Traffic Safety Mobility Instruction (TSMI) 20-01

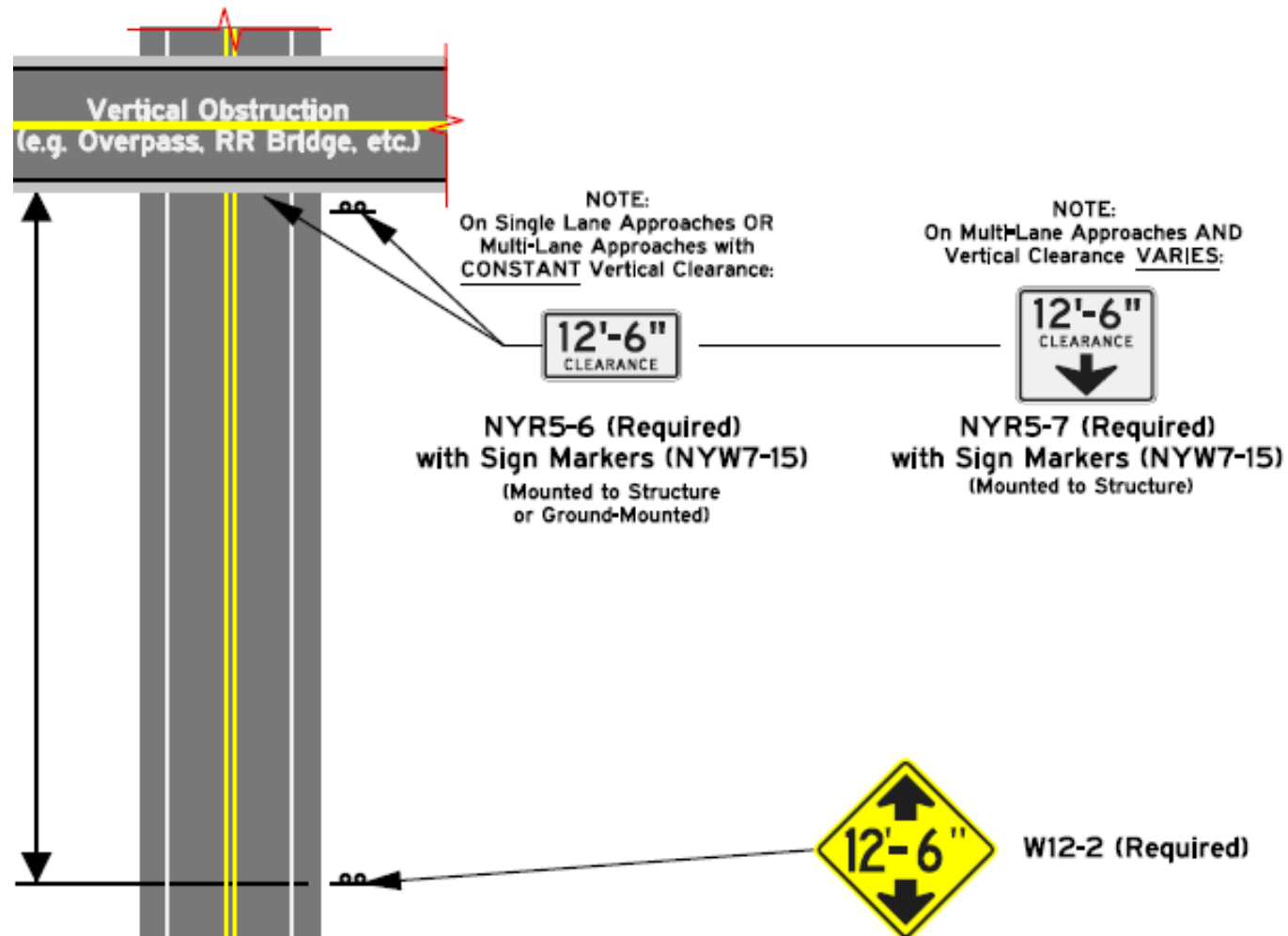
**Required
Countermeasures**



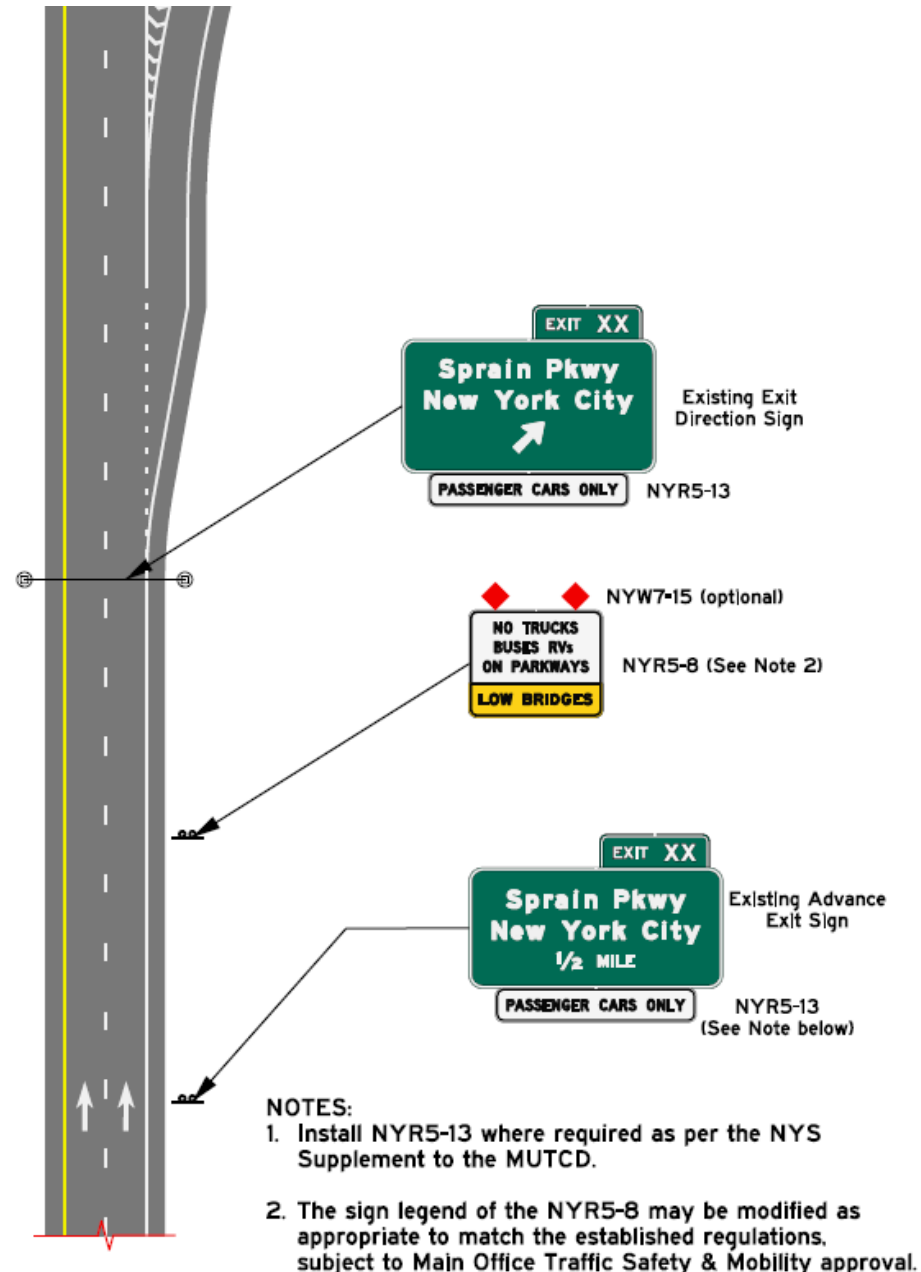
**Additional
Countermeasures**



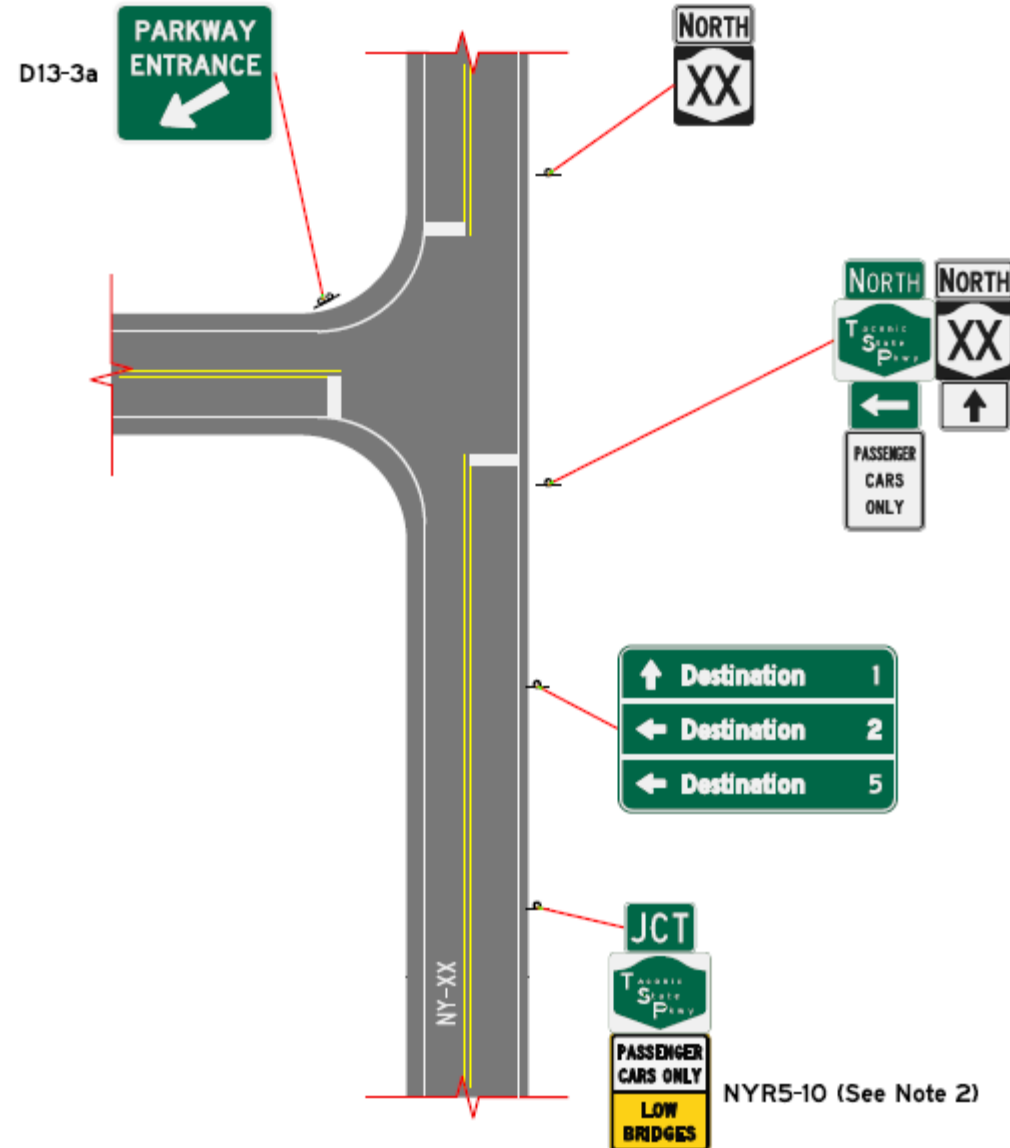
Engineering Approach – Signing Requirements



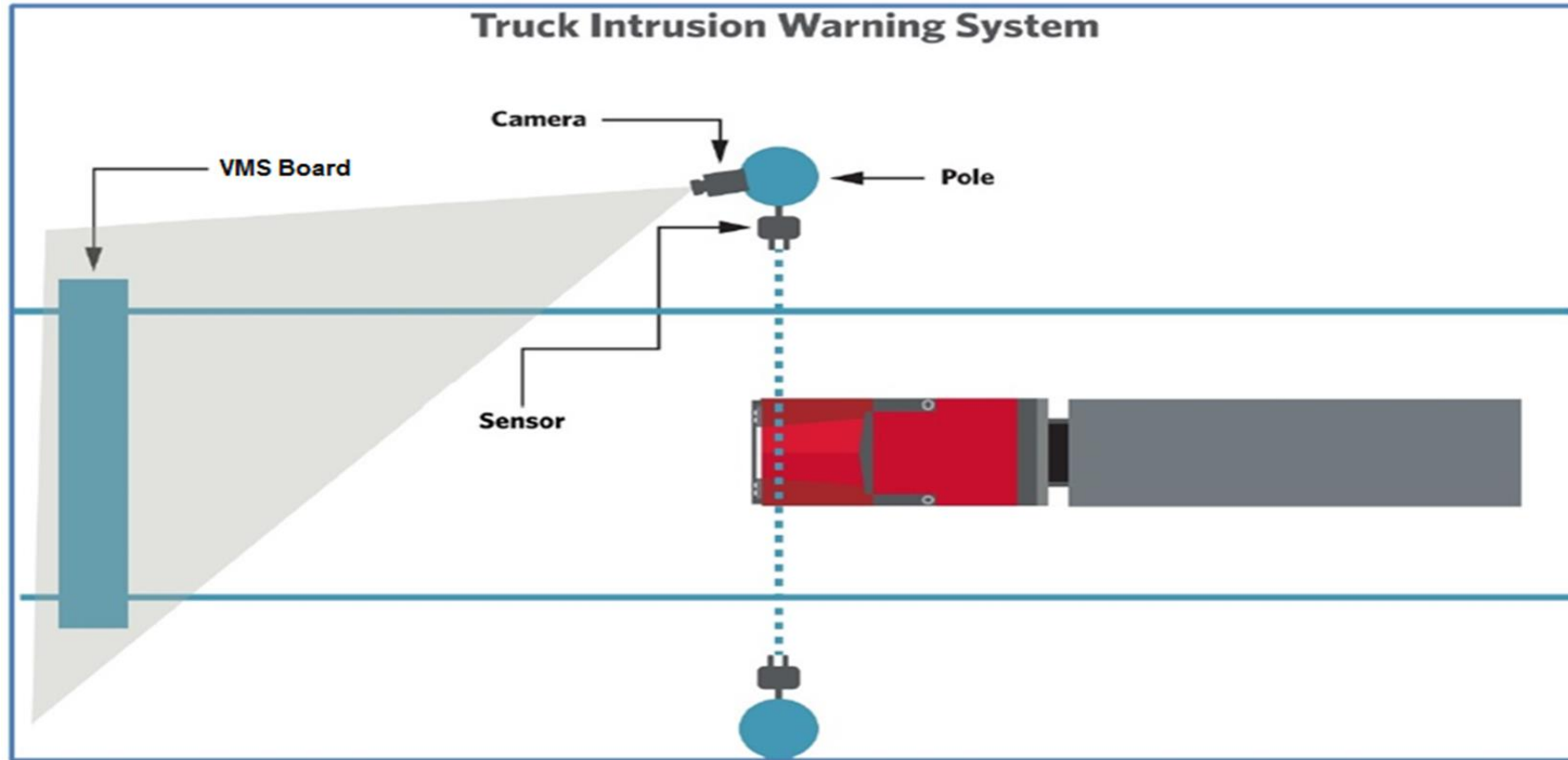
Engineering Approach – Signing Requirements



Engineering Approach - Signing



Engineering Approach - Technology



35 OHVD systems statewide on
approaches to high-hit locations

Engineering ALONE is not the solution:



Despite the numerous warnings and technological countermeasures, hits continue to proliferate...

Crash Analysis: 1,200 bridge hit crash reports

Summary:

1. Highest month is August (11%).
2. Average age is 43.
3. Tractor Trailers account for 50.8%.
4. One parkway accounted for 30%.
5. Rental/Leasing Companies.
6. More than 4 out of every 5 hits are by an out-of-state driver (84%).

Crash Analysis

Common responses on reports:

1. *“Following GPS”*
2. *“Driver thought they would fit”*
3. *“Didn’t see/notice the signs”*
4. *“Disregarded traffic control devices”*
5. *“Didn’t know the signs applied to them.”*

Box Truck Rentals



Truck rentals have become cheap, easy, and quick.

Vehicle height information is unknown and inconspicuous.

Need companies to post height in-cab:

- Steering wheel
- Dashboard

GPS

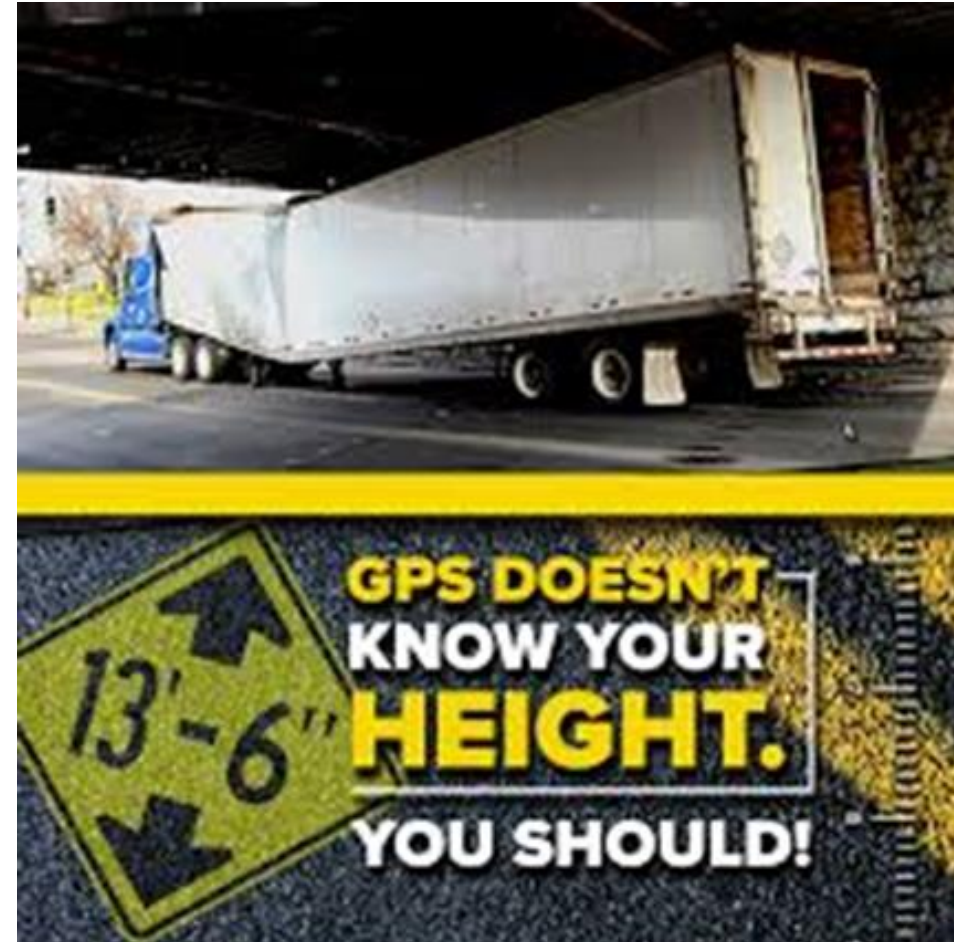
GPS does NOT account for vehicle type or route restrictions.

Reliance has all but eliminated trip-planning and route checks.

- “*Set-it-and-forget it*” mentality

Companies reluctant to institute changes due to:

- Liability
- Regional issue
- High cost with little to no benefit for most users



Bridge Strike Task Force

Participants:

- NYSDOT
- NYSDMV
- NY State Police
- NYCDOT
- Trucking Association of New York (TANY)
- NYS Thruway Authority
- Federal Motor Carrier Safety Administration (FMCSA)
- NYS County Highway Superintendents Association (NYSCHSA)
- Freight Working Group of the NYS Metropolitan Planning Organizations
- Truck Rental and Leasing Association (TRALA)

GOAL: Increase public awareness & change motorist behavior

But how will you do that?



Enforcement: Higher Fines

New fines and penalties for those driving commercial vehicles on New York State parkways went into effect September 3, 2020. The maximum fines and penalties are as follows:

	Less than 10,000 pounds:	Between 10,000 and 26,000 pounds:	Over 26,000 pounds:	New fines and penalties for over height vehicles are as follows:
First violation	\$250 and/or 15 days in jail	\$350 and/or 15 days in jail	\$700 and/or 15 days in jail	\$1,000 and/or 30 days in jail
Second violation within 18 months	\$500 and/or 45 days in jail	\$700 and/or 45 days in jail	\$1,500 and/or 45 days in jail	\$2,000 and/or 60 days in jail
Third or subsequent violation within 18 months	\$750 and/or 90 days in jail	\$1,000 and/or 90 days	\$2,000 and/or 90 days in jail	

Enforcement: Police complete a “Vehicle Questionnaire”

☐ HIT or ☐ NO HIT

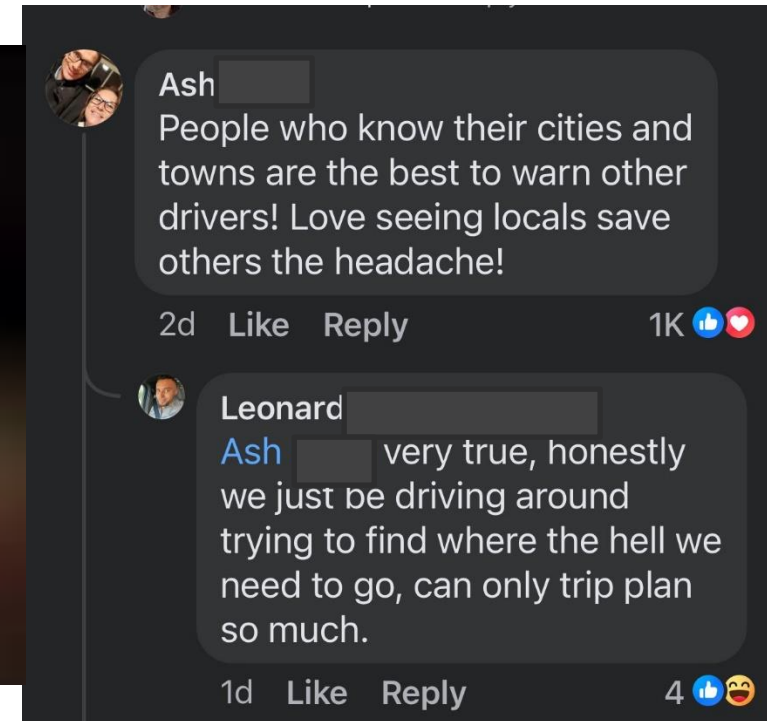
- 1) Date, Time, day of week of incident:
- 2) What technology, if any, was being used? (e.g., GPS, cell phone) Specify device
- a. What GPS Service was being used? ☐ Waze ☐ Google Maps ☐ Apple ☐ Other
- 3) Description of location: (BIN, road, municipality, county):
- a. Posted height of bridge:
- 4) Description of Truck (tractor trailer/box/ flatbed/tanker/other):
- a. Height of truck:
- b. Is driver aware of vehicle/cargo height?
- 5) Fleet vehicle/Owner Operator/Rental/Other:
- 6) Driver Information: License class and State:
- a. Preferred language?
- b. How often in NY?
- c. How long a Truck Driver?
- 7) Description of incident:

- 8) Ask the driver why they hit the bridge:
- a. Did the driver see any signs about truck restrictions, height restrictions?
- b. If yes, why did they continue driving on roadway?
- 9) Tickets Issued (list violations):
- 10) Did the driver know about parkway restrictions in NYS? Yes ☐ No ☐
- 11) Secondary incident because of Bridge Strike? ☐ Yes ☐ No
- 12) Entry Location (ask where they entered and where they planned to exit the parkway):
- 13) Describe any involvement or assistance by another police agency. If none, indicate below.
- 14) Contents of truck/trailer (if loaded):
- 15) Destination:

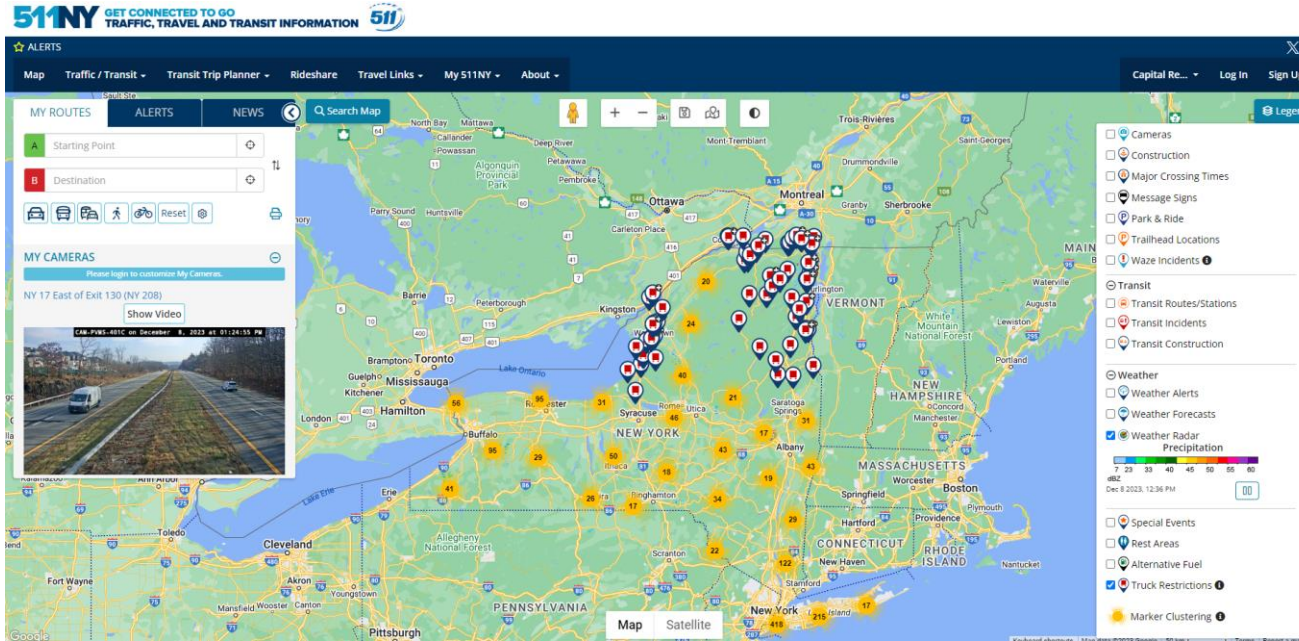
Education: Social Media Campaign



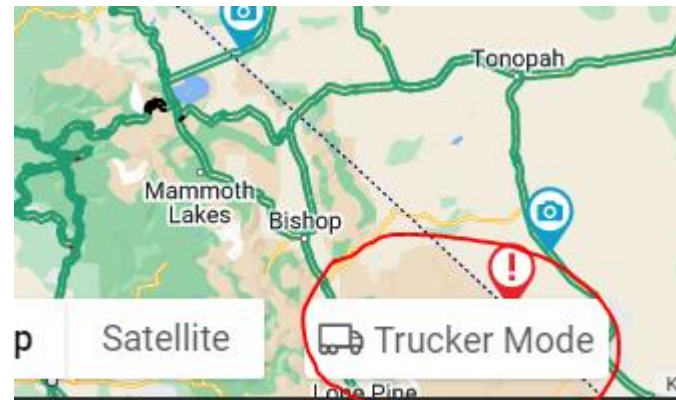
Education: Public Awareness



Education: Trucker Mode



In 2024,
511NY to
include
“Trucker
Mode”



Education:



**CHECK YOUR
HEIGHT
KNOW IT'S
RIGHT**

13'-6"

When renting a moving truck, know the vehicle's height and watch for low clearance warning signs.

 **NEW YORK**
STATE OF OPPORTUNITY. | **Department of Transportation**

**GPS DOESN'T
KNOW YOUR
HEIGHT.
YOU SHOULD!**

Phone and personal mapping systems do not account for low bridges.

Parkways have low overhead bridges. Moving trucks are prohibited from using them.

Watch for signs

PASSENGER CARS ONLY

NO TRUCKS
BUSES RVS
ON PARKWAYS
LOW BRIDGES

PASSENGER
CARS
ONLY

6'-11"
CLEARANCE

6'-11"
CLEARANCE

6'-11"
CLEARANCE

Find height restrictions on 511NY.org or the 511NY mobile app by clicking "truck restrictions" on the traffic map.

3,000 distributed to rental company offices:


- Uhaul
- Penske
- Ryder

Once Trucker Mode is available, a QR code will be added for rental companies

Education:

COMMERCIAL VEHICLES
TRACTOR TRAILERS
BUSES • BOX TRUCKS • RVs
MOVING TRUCKS

STAY OFF PARKWAYS



NO TRUCKS
BUSES RVs
ON PARKWAYS
LOW BRIDGES

Low clearance bridges are located across NYS.
Before departing, find height restrictions on
511ny.org by clicking "truck restrictions" on
the homepage travel map

Don't Let This Happen to You



6'-11" **PASSENGER CARS ONLY**

New York State parkways have low overhead bridges that don't accommodate tractor trailers, buses, RVs, box trucks, moving trucks or other commercial vehicles.

- Watch for signs and pavement markings
- Use commercial GPS – phone and personal mapping systems do not account for low bridges.

If you've mistakenly entered a parkway and are approaching a low overhead clearance bridge:

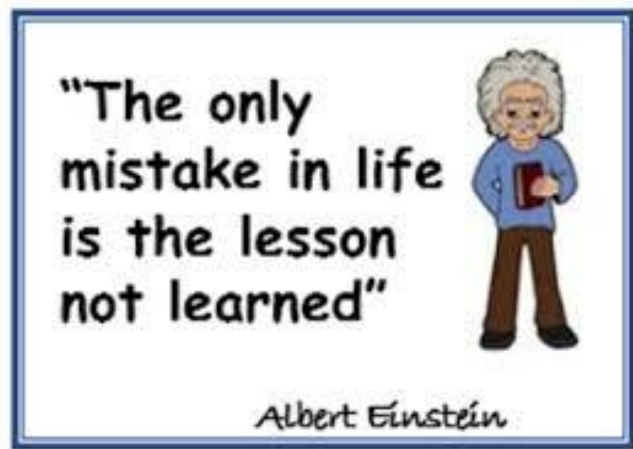
- Stop on the shoulder, where practical
- Turn hazard lights on
- Call 911 for assistance

  **Department of Transportation**

 **Governor's Traffic Safety Committee**  **Thruway Authority**

20,000
brochures
printed and
distributed

Lessons Learned:



1. More is NOT better.
2. Incentivization is key.
3. Changing behavior takes time.

Next Steps:

1. Develop questionnaire for trucking industry professionals
2. Experiment with innovative traffic control devices.
3. Coordinate a multi-state campaign with consistent messaging (“Check your Height, Know it’s Right!”)
4. Gather multi-state support and work with GPS companies to enact changes to GPS navigation.



Thank
you!

Questions?

Contact Information:

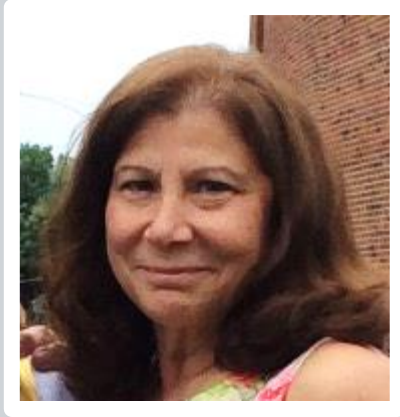
Dan Carey, P.E.

518-457-7114

Daniel.Carey@dot.ny.gov



Q&A, Polling, and Discussion with States



Marygrace Parker, Freight Program Director,
The Eastern Transportation Coalition



Questions about the Presentation or Initiative?



Poll 1

What priority is addressing bridge strikes within your state?

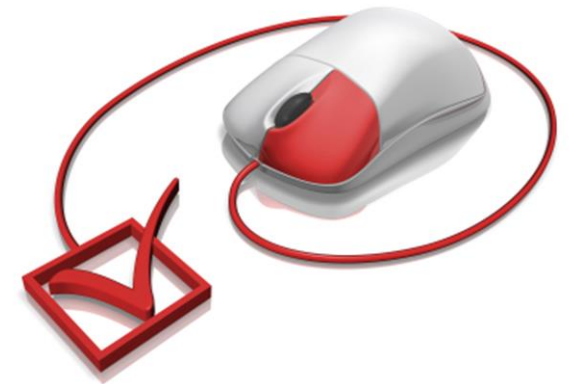
- High Priority
- Medium Priority
- Low Priority



Poll 2

Has your agency taken any steps to address bridge strikes through outreach and/or initiatives?

- Yes
- No
- I'm not sure



Discussion with States



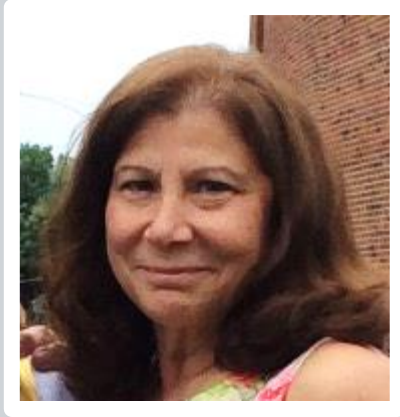
**Department of
Transportation**

NYSDOT: Next Steps

1. Develop questionnaire for trucking industry professionals
2. Experiment with innovative traffic control devices.
3. Coordinate a multi-state campaign with consistent messaging (“Check your Height, Know it’s Right!”)
4. Gather multi-state support and work with GPS companies to enact changes to GPS navigation.
5. Anything else



Wrap Up



Marygrace Parker, Freight Program Director,
The Eastern Transportation Coalition



THE EASTERN
TRANSPORTATION
COALITION

CONNECTING FOR SOLUTIONS



THANK YOU

Marygrace Parker, Freight Program Director
The Eastern Transportation Coalition
mgparker@tetcoalition.org