



## **Traveler Information Web Summit:**

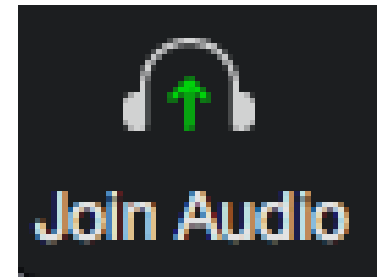
*Improving Safety - Implementing New Travel Information Services for Commercial Vehicles*

*March 17, 2022*



# Welcome!

- We are using Zoom **Webinar**
- **AUDIO (Computer):** Use your computer speakers and microphone by clicking the “Join Audio” button at the bottom left of the screen. You will be muted.
- **Alternate Audio (Phone):** Call into the meeting by dialing the phone number based on your location (provided in the confirmation email) and enter the Meeting ID at the prompt. You will be muted.
- **This web meeting is being recorded.**
- **Questions** with the audio or web? Please contact Esther via email ([ekleit@kmjinc.com](mailto:ekleit@kmjinc.com))
- The **Chatbox** is not available to participants. Please use the **Q&A box** for questions to the presenters





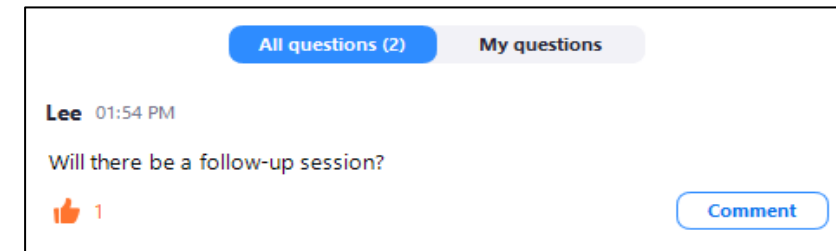
# Asking Questions in the Q&A Box



- Click on the Q&A icon at the bottom of your screen



- The questions in the Q&A box will be monitored and answered either between presentations or at the end of the meeting
- You can keep track of your questions in the “My Questions” tab in the Q&A box





# Asking Questions Verbally



- Please raise your hand (*click on the hand icon at the bottom of the screen*), and a host will unmute you.



- Please give your name and agency before asking your question
- **Please mute yourself when you are finished asking a question**





# Welcome!



**Denise Markow**, TSMO Program Director  
The Eastern Transportation Coalition



# Coalition Update

## RECENT

- ✓ **Rebuilding the Causes of Congestion Pie Chart with Real-World Data** - November 10, 2021
- ✓ **Bi-Annual Waze Technical Working Group Web Meeting** - November 18, 2021
- ✓ **Transportation Data Marketplace State & Vendor Meetings (33)** – August 2021 - January 2022
- ✓ **RITIS User Group Meeting** - February 24, 2022

## UPCOMING

- **Building a Corridor Performance Summary Report: RITIS Workshop #1** - March 29, 2022
- **RITIS Product Enhancement Working Group Web Meeting** - April 6, 2022
- **New England HOGs – Using RWIS in Winter Operations** – April 7, 2022
- **Understanding Origin-Destination Data: RITIS Workshop #2** - April 8, 2022
- **Electric Vehicle Workshop** - April 12-13, 2022 (invite only)
- **FY2023 Strategic Planning** starts April 21, 2022 (Committee members only)
- **RITIS User Group Meeting** - May 5, 2022
- **Potomac HOGs – Getting Better Information out to Travelers in Winter Operations-** May 11, 2022





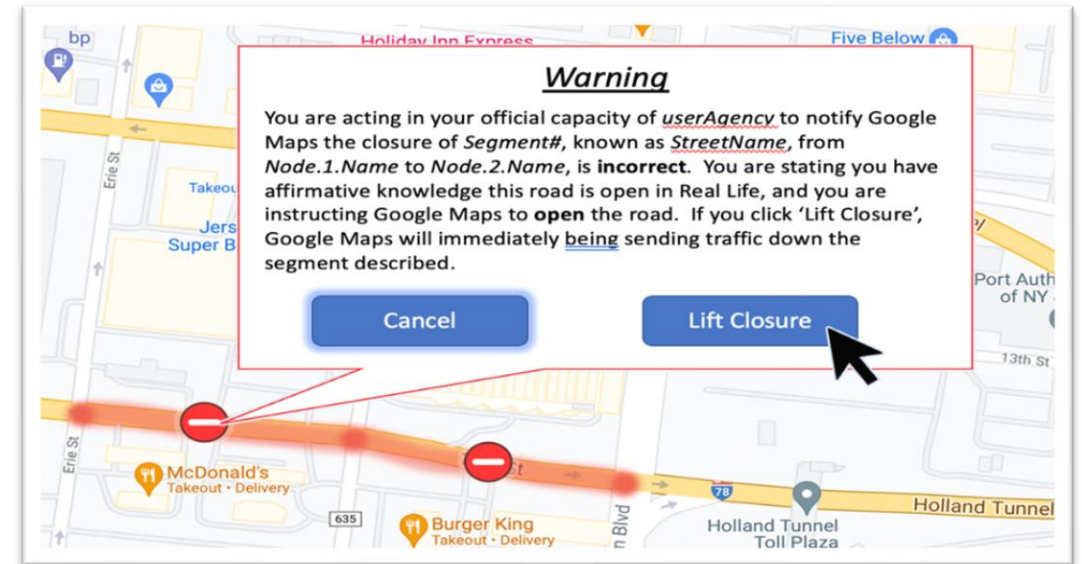
# Traveler Information - 3<sup>rd</sup> Party Mapping

## WAZE



Coordinating with WAZE Map Editors on  
Road Closures

## Google Maps

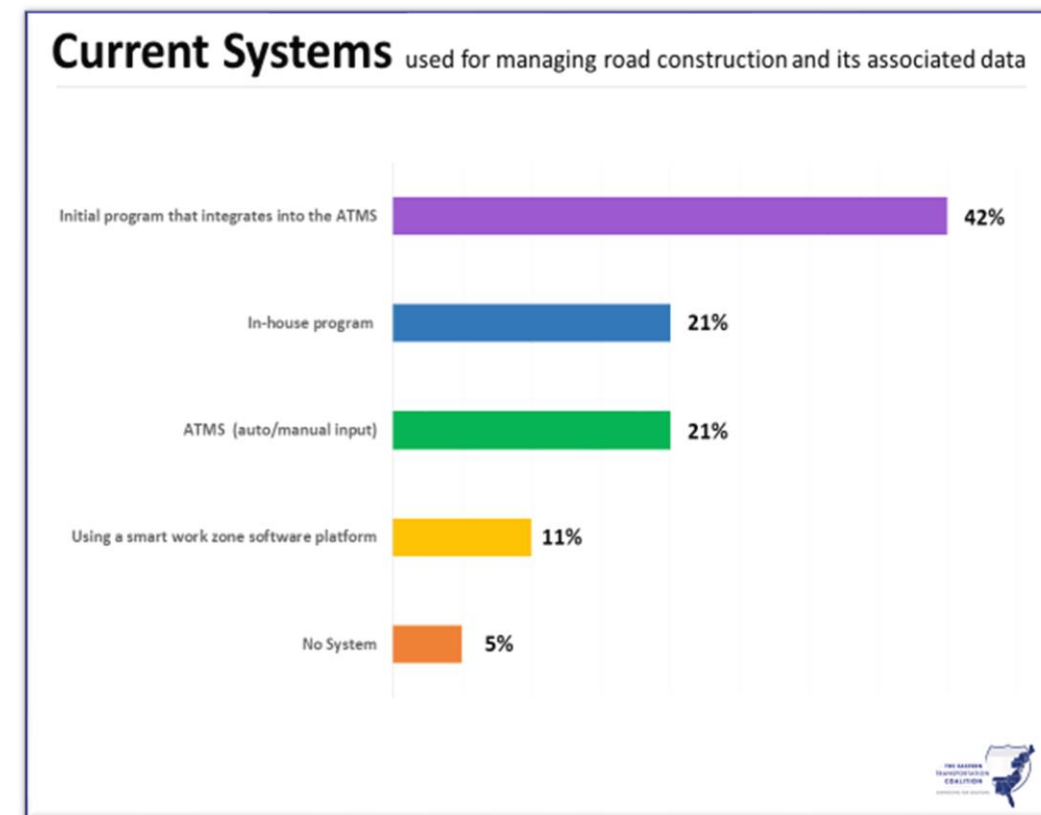
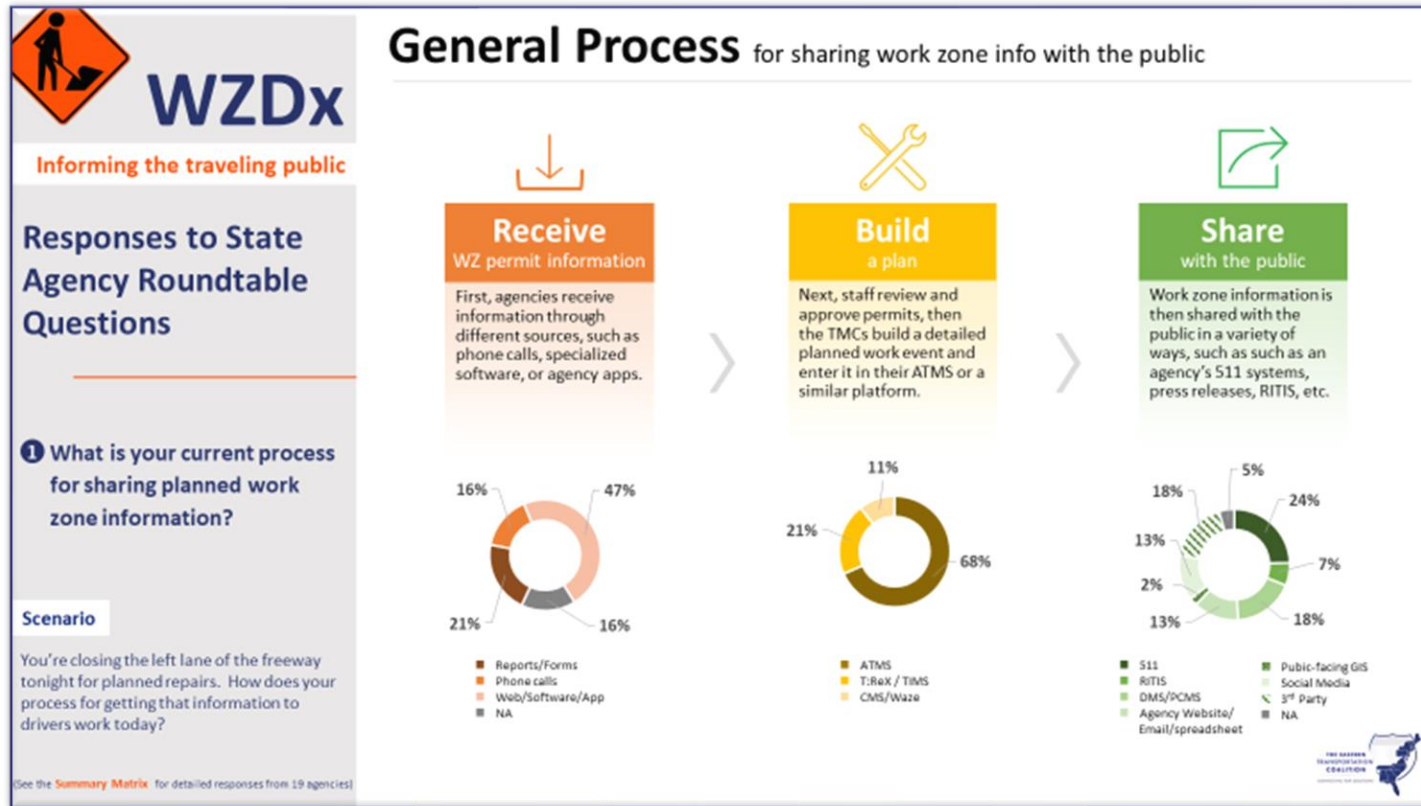


Capitalizing on our WAZE success  
Coordinating with the Executive Board  
on a request letter to Google



# Work Zone Data Exchange Update

- **Fall 2021** - Member agency representatives discussed how their agency shares work zone data – The Existing Condition
- **Graphics** were compiled summarizing the information

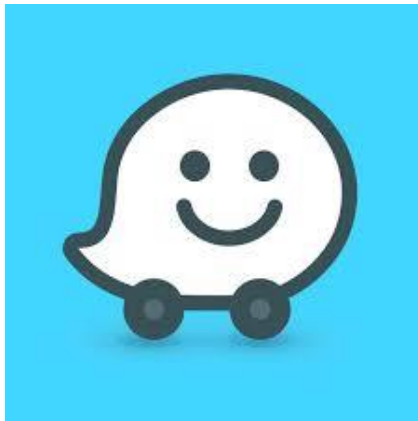






# WAZE-RITIS-WZDX Data Integration Update

*The Coalition is proposing to evaluate the data feed requirements for the following  
– to look at the viability of consolidating resources to create a common feed.*





# Why are we here today?

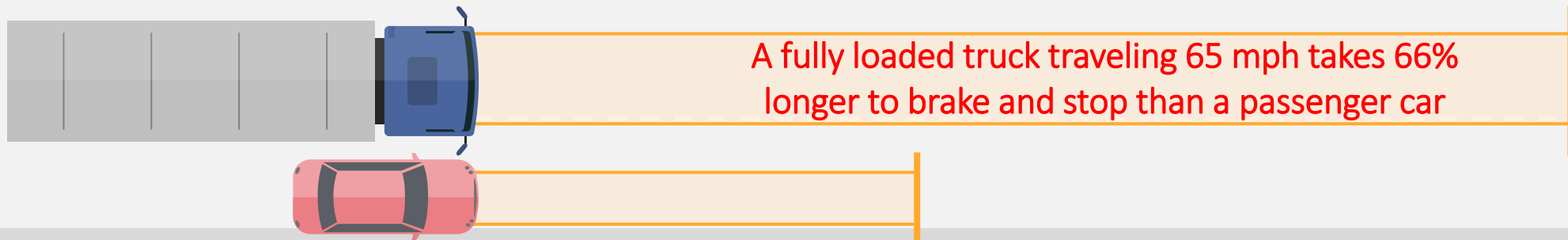
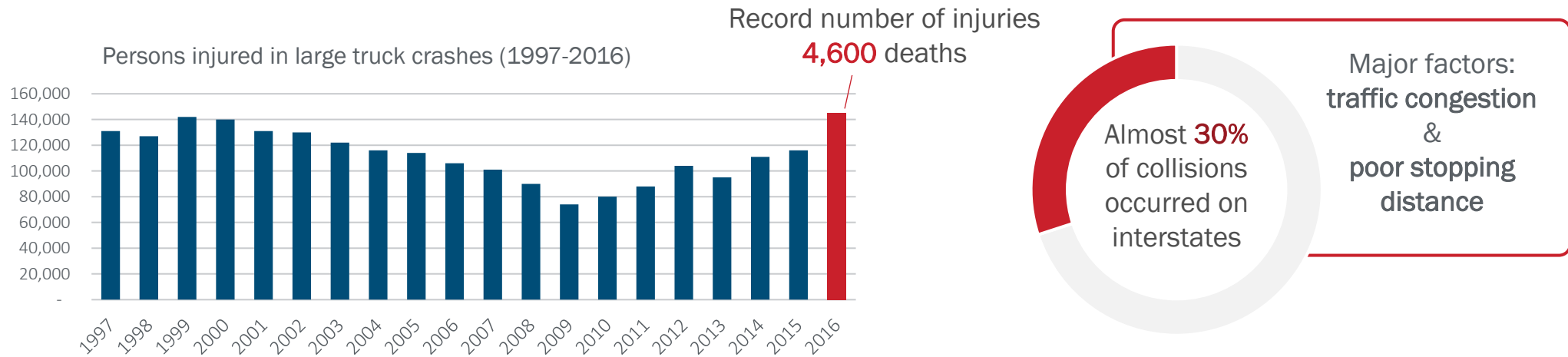


**Marygrace Parker**, Freight Program Director  
The Eastern Transportation Coalition



# Road Congestion is a Critical Safety Issue

Reducing congestion reduces dangerous and unanticipated slowdowns – and reduces collisions





# Why is it important that truckers get good, reliable Traveler Information?



## **Tractor-trailer crash cause over 10 mile backup on I-95 south in Caroline County**





# Thank you for your many years of dedicated service to the Coalition



## We will miss you Mary!



# Welcome from our TIS Co-Chairs



**Mary Ameen, PE**  
Executive Director  
NJTPA



**Kelly Wells, PE**  
State Traveler Info Engineer  
North Carolina DOT

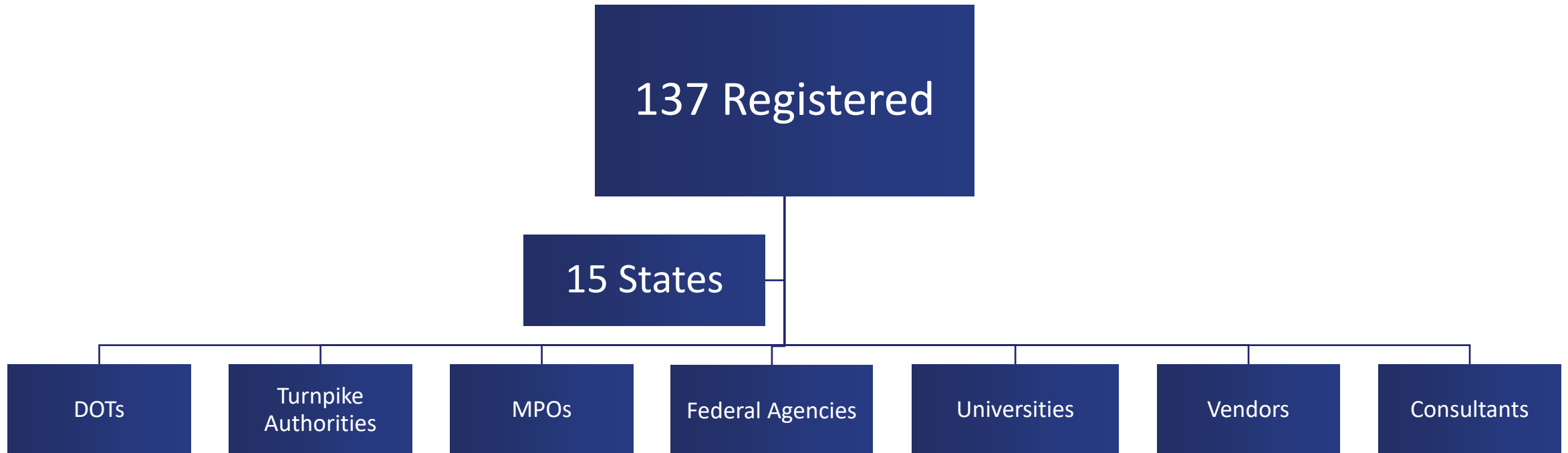


# Agenda

Topic	Speaker
Welcome & Update on the Eastern Transportation Coalition	Denise Markow, TSMO Program Director, The Eastern Transportation Coalition Mary Ameen, Executive Director, NJTPA & TIS Co-chair
Web Summit Introduction	Marygrace Parker, Freight Program Director, The Eastern Transportation Coalition
Raising the Bar in Pennsylvania on Low Bridge Information	Ryan McNary, Manager, Traffic Systems and Performance, Pennsylvania DOT Mary Farrell, President, Information Logistics, Inc
Eyes On The Ground, Anywhere, Anytime: A Technology Demonstration	Mary Farrell John Farrell, Vice President of Product Management, Information Logistics, Inc
Break (10 min)	
North Carolina Pilot: Using Drivewyze/INRIX for Commercial Vehicle Alerts	Kelly Wells, State Traveler Info Engineer, North Carolina DOT & TIS Co-chair
Using Technology to Enhance Commercial Vehicle Safety on New Jersey Roads	Sal Cowan, Senior Director - Mobility, New Jersey DOT Marc Nichols, Director, Government & Industry Partnerships, Drivewyze Amy Lopez, Director of Public Sector Services and Smart City Strategy , INRIX
Wrap Up and Remaining Questions	Kelly Wells



# The Eastern Transportation Coalition Sponsored Event







# Introductions



**Ryan McNary**

Manager, Traffic Systems and  
Performance  
*Pennsylvania DOT*



**Mary Farrell**

President  
*Information Logistics, Inc.*



**John Farrell,**

VP of Product Management,  
*Information Logistics, Inc.*



**Amy Lopez**

Director of Public Sector  
Services and Smart City Strategy  
*INRIX*



**Sal Cowan**

Senior Dir. – Mobility  
*New Jersey DOT*



**Marc Nichols**

Director, Government &  
Industry Partnerships  
*Drivewyze*



# Raising the Bar in Pennsylvania on Low Bridge Information



**Ryan McNary**, Manager, Traffic Systems and Performance  
*Pennsylvania DOT*



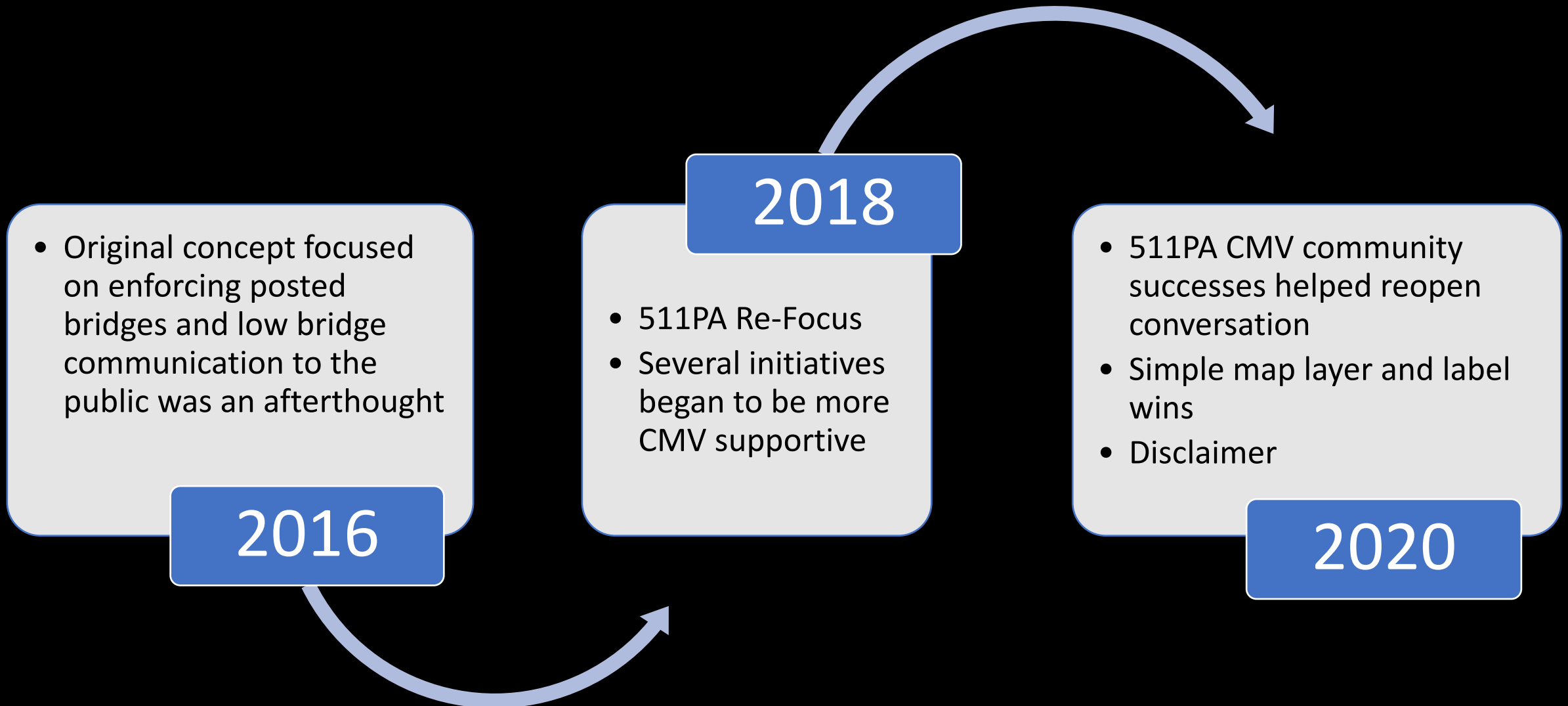
**Mary Farrell**, President,  
*Information Logistics, Inc.*

# Raising the Bar on PA Low Bridge Information

Ryan McNary, Manager  
Traffic Systems and TSMO Performance  
Bureau of Maintenance & Operations PennDOT

Mary Farrell, President  
Information Logistics

# Communicating Public-Facing Low Bridges





HELPS  
alerts

iris locate

iris eyes

Geotalker

SAM  
SAM IVR

illog  
INFORMATION LOGISTICS

511 in a box

iris

511

# Problem is not just in Pennsylvania



Bridge strikes happen in many areas:

- Railroad bridges
- Overpasses
- Tunnels
- Covered bridges
- Truss bridges
- Pedestrian walkways

Bridge strikes are caused by both trucks and RVs.



# How is low bridge information getting out commercially?

## SIGNAGE

### WAZE<sup>2</sup>: *No*

“Unfortunately, Waze does not support bridge heights at this time and I am unaware of any plans to do so.” <sup>2</sup>

<sup>2</sup><https://support.google.com/waze/thread/122839170/trying-to-plan-a-route-to-avoid-low-clearance-bridges?hl=en>

### Google<sup>3</sup>: *No*

“Nearly every driver of every truck that crashes into our bridge utters the fateful words, 'I was just following Google.’”<sup>3</sup>

<sup>3</sup><https://support.google.com/maps/thread/14284030/does-google-maps-have-a-vehicle-height-warning-feature?hl=en>

Garmin Navigation<sup>1</sup>: *Yes, on certain devices – Nearby as you go, or on your preset route.*

“Your device will provide low bridge clearance alerts based on your vehicle profile even if a route hasn't been calculated. The distance at which this alert appears can vary depending on the road, but it should provide sufficient distance to choose an alternative route. The usage mode on your device must be set to either a truck or Camper/RV type profile that you have entered height data for. For best results, calculate a route to your destination. Bridges shorter than the vehicle profile setting will be avoided on the recommended route automatically.”

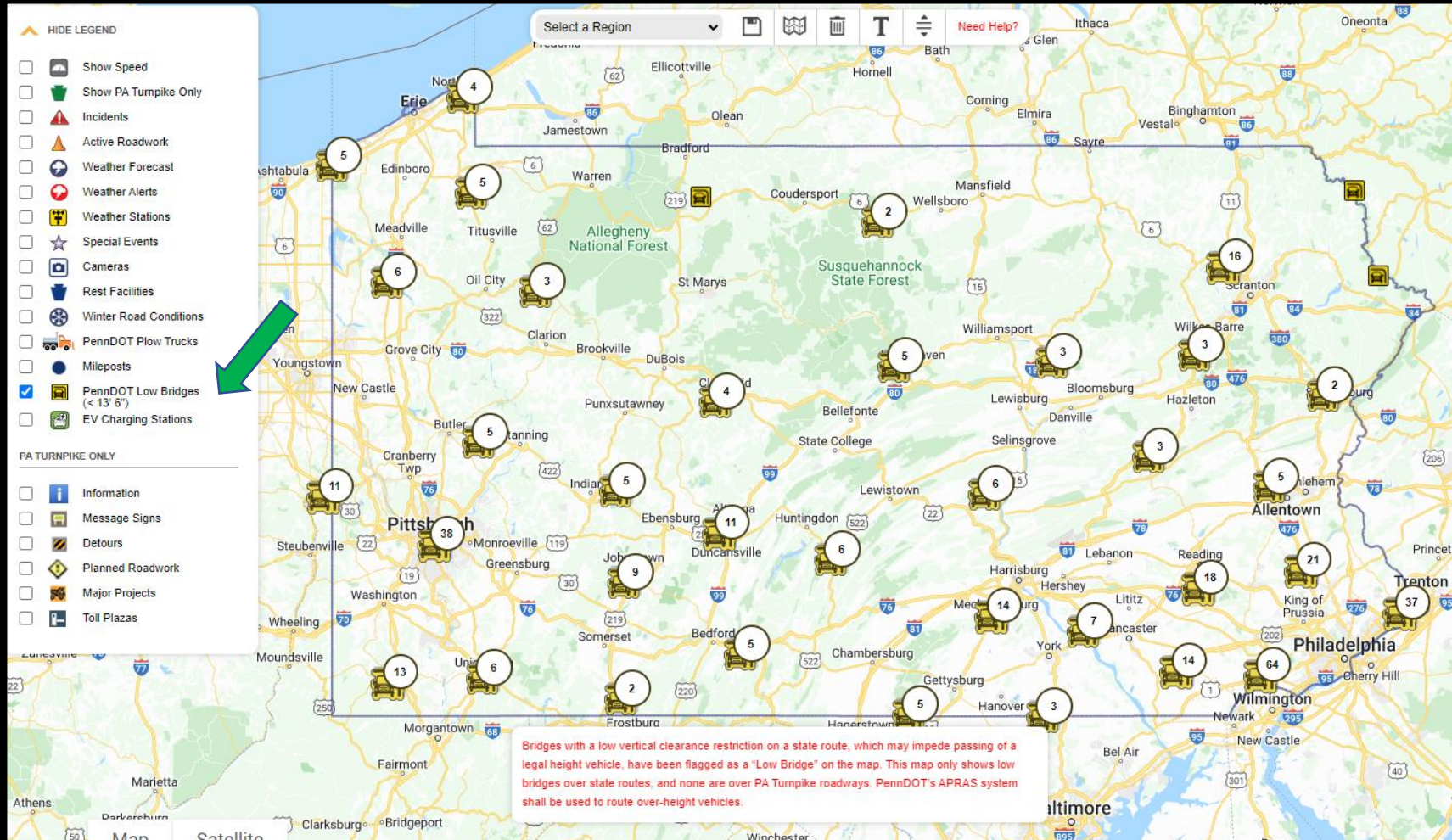
<sup>1</sup><https://support.garmin.com/en-US/?faq=rKQl0d6C0b9YaFKiSgfzh5>

Pay-For-Services: *Yes, to different degrees*  
Such as:

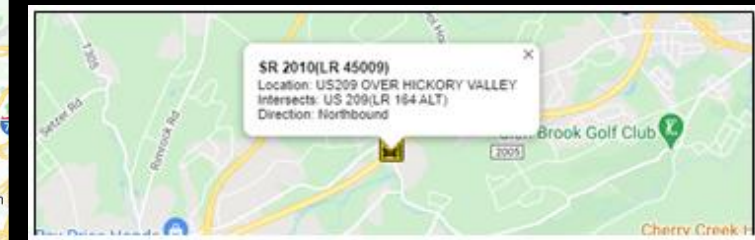
- Lowclearances.com
- Rand McNally RV GPS
- Printed maps, search tools



# PA Low Bridge Information Using 511PA Traveler Information Services -Web map

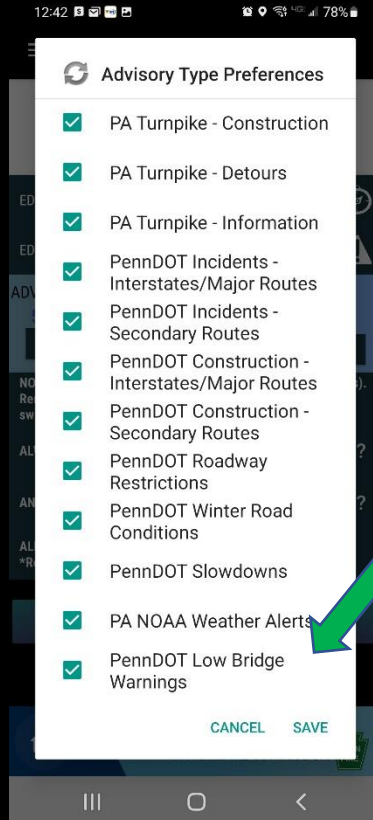


- Interactive Website Layer Clearly Marked
- Zoom and Click for details

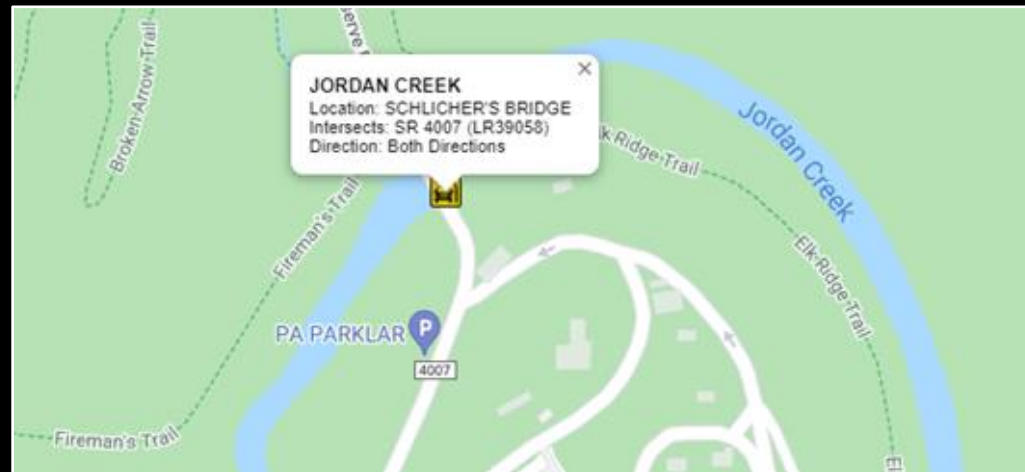


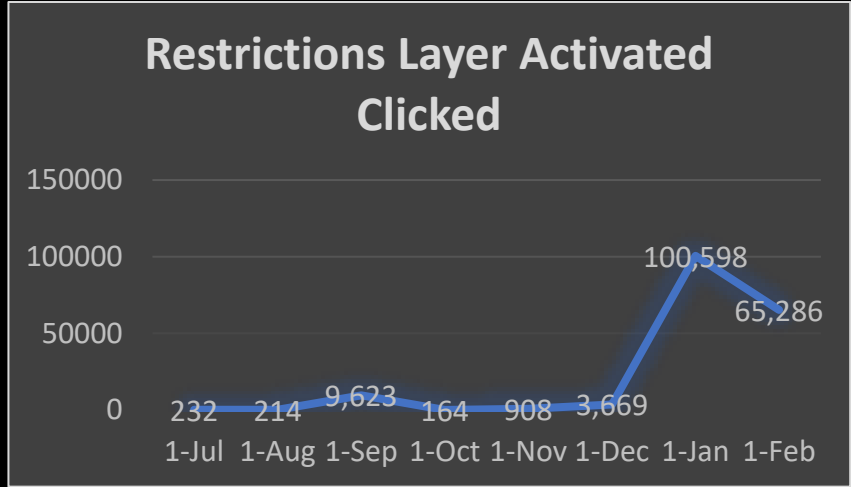


# PA Low Bridge Information Using 511PA Traveler Information Services - Mobile App



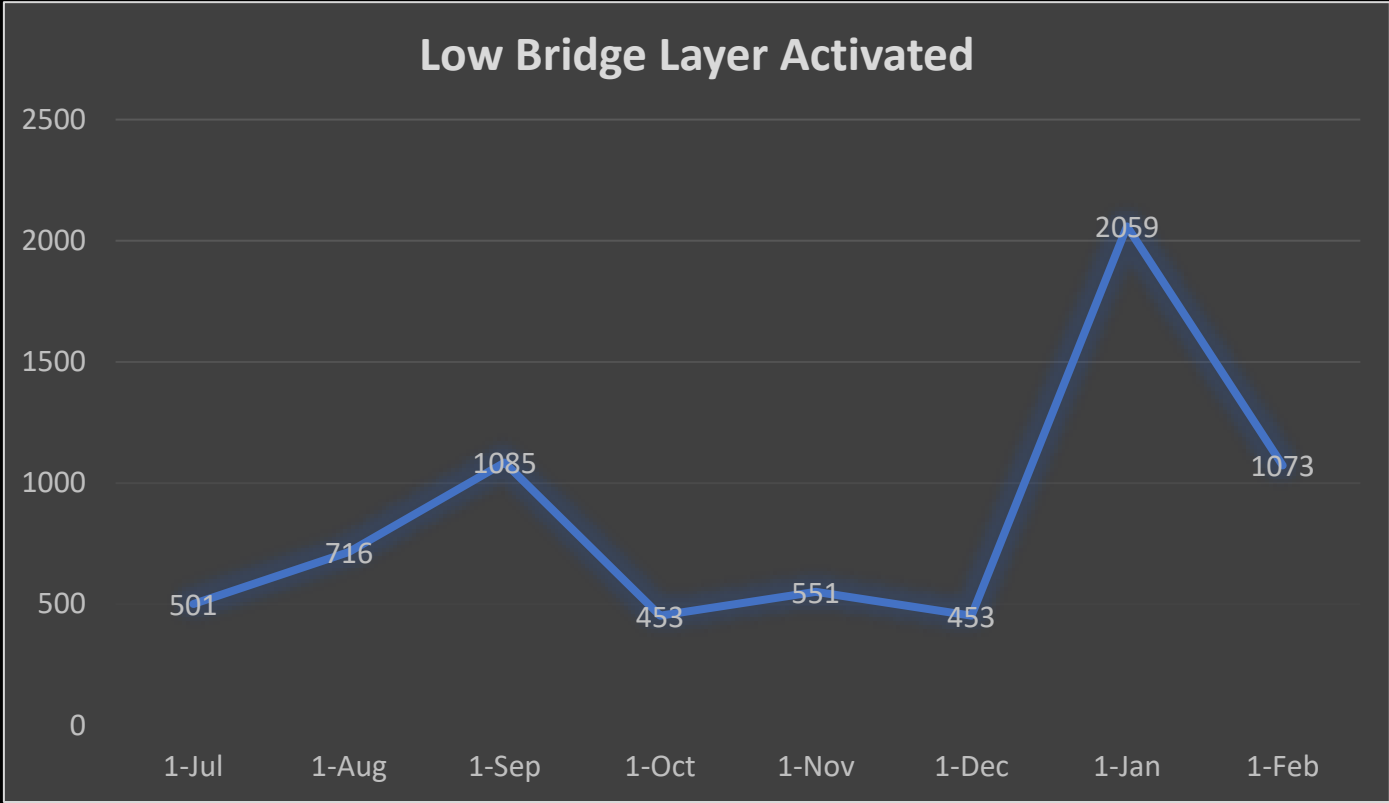
- Mobile Application
- Added Selection for Commercial v Passenger Vehicle
  - Commercial Options defaulted with Low Bridges
- Drive Mode
  - Announces low bridge when in range





*Since the start of the program, there have been a minimum of almost 500 layer activations/month, reaching more than 2,000 activations in January alone.*

# Usage Results So Far



# Lessons Learned

- Data availability. Data updates.  
PA has a team who facilitates this well.
- Projection matters.  
The GIS data available might not always plot precisely on different base maps. May need make location adjustments.









Last Saturday, I was driving my new Coleman 202rd on a back road up to Cades Cove. I had gone under one bridge and was approaching a second slowly. I now know the sickening feeling of being yanked to a halt and getting out to find a towable but basically destroyed trailer.

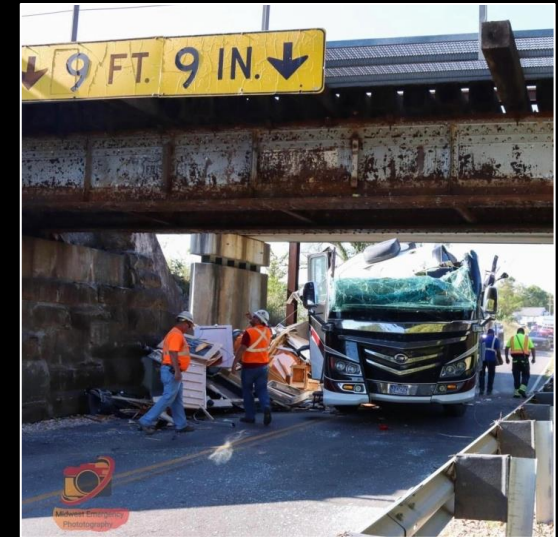


Does anyone know of a good app that lists low clearances by state and route? The GS trip planner only indicates clearances under 13' which could end up being expensive.

<https://www.rv.net/forum/index.cfm/fuseaction/thread/tid/29559155/print/true.cfm>

- <https://www.irv2.com/forums/f59/bridge-strike-443381.html>
- <https://rvshare.com/blog/low-bridges/>
- <https://rvlife.com/low-clearance-accidents/>
- <https://blog.goodsam.com/rv-overhead-clearance-issues/>
- <https://www.rvtravel.com/video-rv-smashes-into-vehicle-killer-underpass/>
- and many more..

I don't think that there is anything out there that will show all the low bridges on back roads. I don't even think that all the low bridges in metropolitan areas are shown. Your only defense is your own diligence. My wife's number one job when we travel is to watch for low bridges. My number one job is to catch the ones that she doesn't.





## More ideas ... ?

- Add a “Check My Route” feature so that low bridges are seen for specific route.
- Add route-specific feature to mobile app with low bridges.
- Campaign to add low bridges to Waze/Google.
- Target part-time drivers
  - Truck Rental companies
  - RV organizations



Questions?



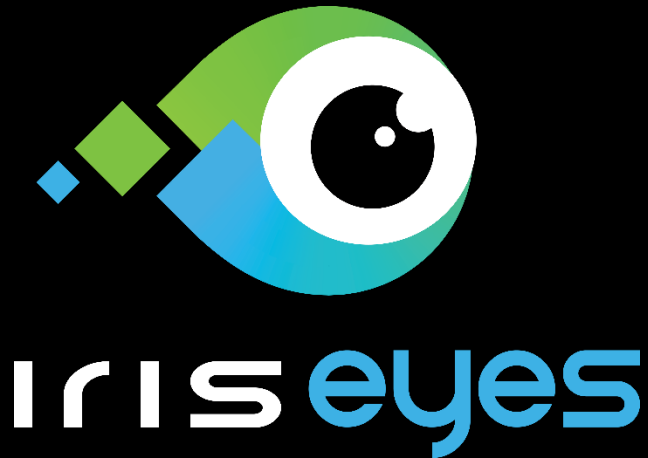
# Eyes On The Ground, Anywhere, Anytime: A Technology Demonstration



**John Farrell**, VP of Product Management,  
*Information Logistics, Inc.*

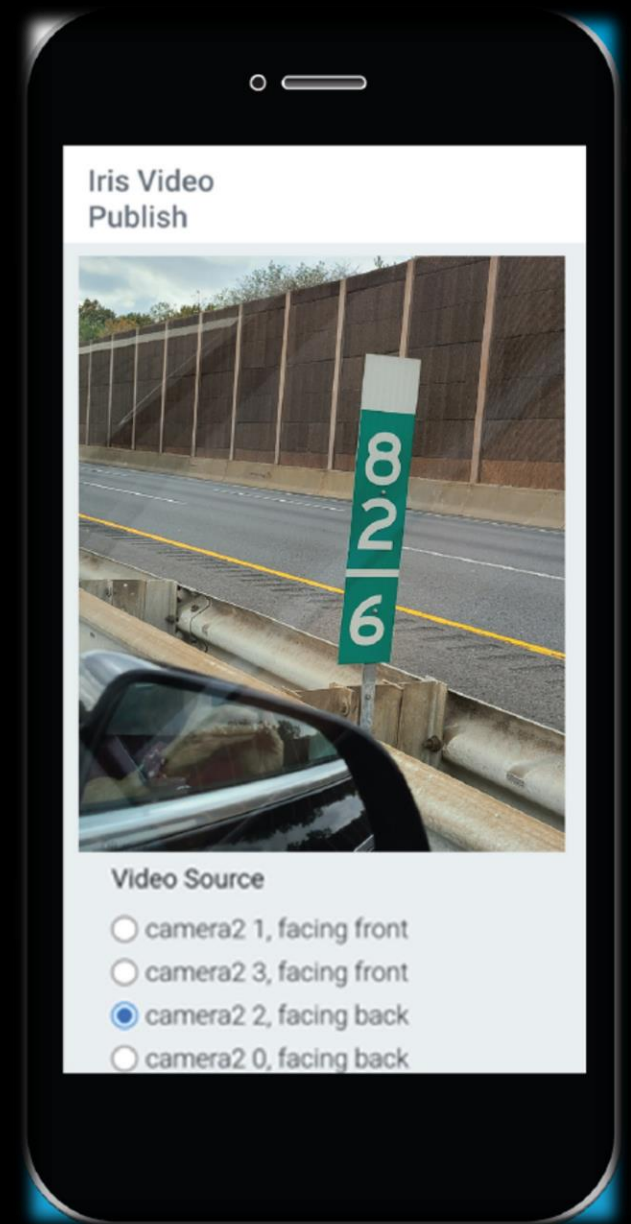
# IRIS Eyes™

Remote cameras, everywhere, on demand.



Get live video streams from remote cell phones into your operations center!

- Staff can share the viewing link so that several people can view the live stream simultaneously.
- Rewind the video to view earlier parts of the stream.
- Download the video afterward for after action review





# Break – 10 minutes



## We will resume at 11:00am





# North Carolina Pilot: Using Drivewyze/INRIX for Commercial Vehicle Alerts



**Kelly Wells, PE**, State Traveler Info Engineer

*North Carolina DOT*



# Commercial Vehicle Safety Alerts in North Carolina

TETC Trav Info

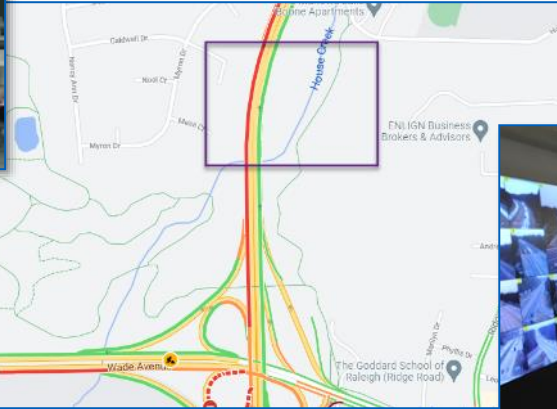
Kelly Wells, PE, NCDOT



Drivewyze INRIX



# Slowdown Alerts



- Great to find out about slowdowns and tell drivers
- But what if we could do it more quickly and at the point of need?



# Alerting Trucks of Slowdowns in Real-Time

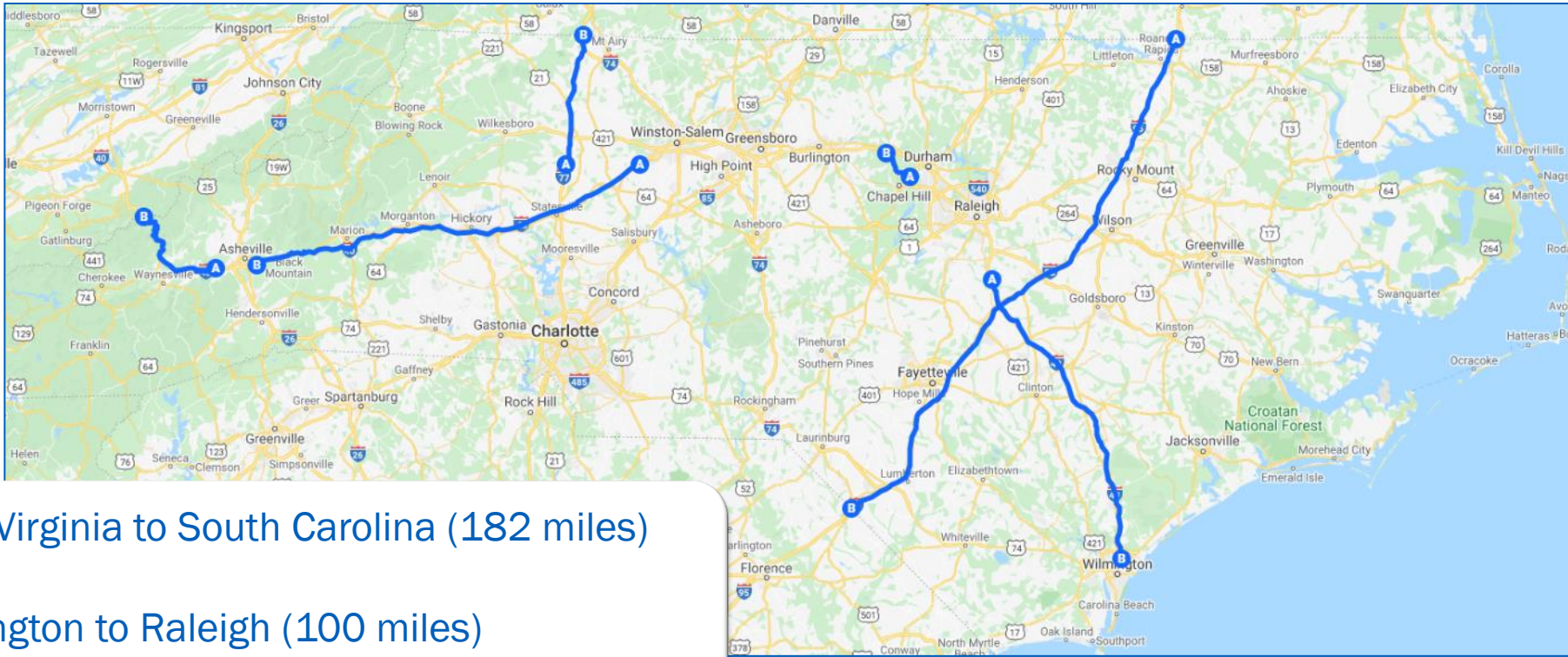


INRIX + Drivewyze = real time in cab alerts  
for slow downs and congestion





# Locations: 500 Total Rural Miles



- I-95 from Virginia to South Carolina (182 miles)
- I-40 from
  - Wilmington to Raleigh (100 miles)
  - Durham to Hillsboro (11 miles)
  - Winston Salem to Asheville (127 miles)
  - Asheville to Tennessee (40 miles)
- I-77 in 2 counties south of VA (40 miles)





# CMV Safety Alerts Contract



- Through The Eastern Transportation Coalition “VPP 2”
- Soft Launch: May 2021
- Official Launch: September 2021
- Duration: 1 year
- Annual Fee: \$250,000



# About INRIX



## Expertise

- Real-time monitoring nationwide road network
- Detects + characterizes closures, queues, slowdowns
- Updates every minute, including location and severity

## Foundational Data

- Consumer Devices
  - Connected Cars
  - Mobile Phones
- Local Fleets (service, delivery, etc.)
- Long Haul Trucks



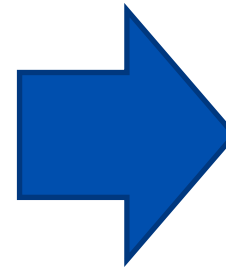
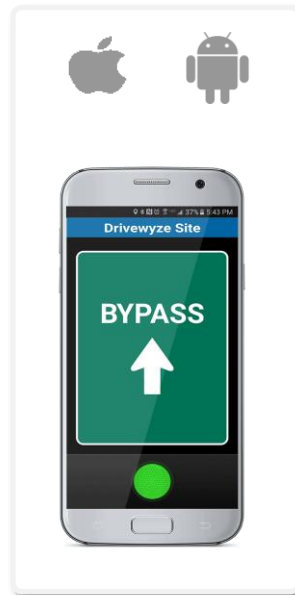
# Drivewyze

The largest single network of trucks with in-cab presence

## ELD (Electronic Logging) Partners 2.7m CMVs



## Hands Free Driver App



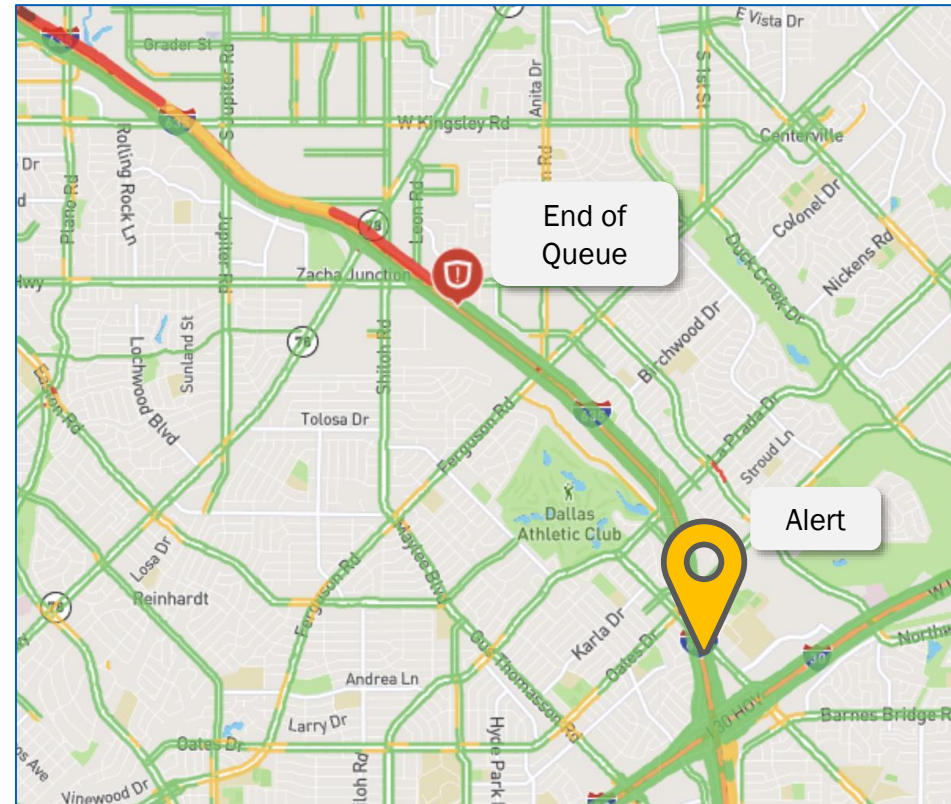
## Always-On Applications for CMV Drivers



# INRIX Traffic Alerts

## Dangerous Slowdowns

- Significant drop in speed ahead vs current speed
- Alert will be issued if speed drops 35 mph +
- 2 miles ahead



## Congestion

- Delay vs. Free flow
- Alert will be issued if 3 minutes or more of delay
- 3 miles ahead





# CMV Traffic Alerting - How it Works

Alerting, analyzing and optimizing driver behavior.

## NCDOT-Defined Alert Corridors

- Rural Interstates

## Drivewyze Monitors INRIX for Events

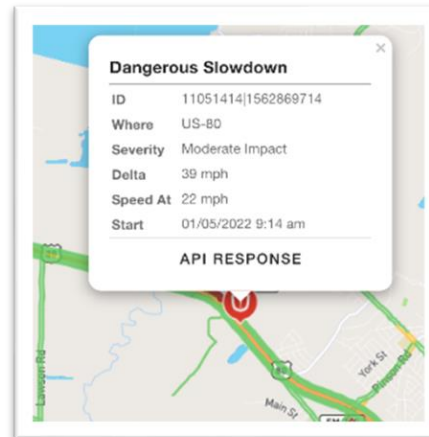
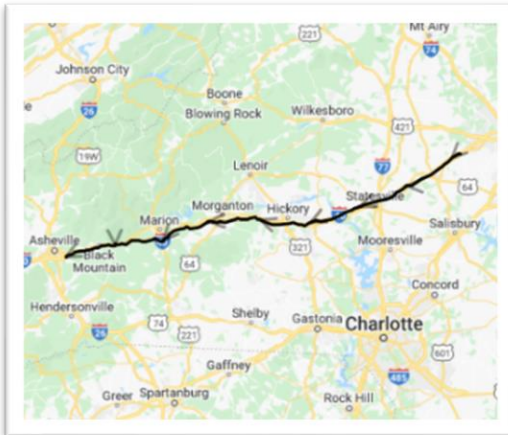
- Sudden Slowdowns
- Congestion

## Drivewyze Distributes Alerts

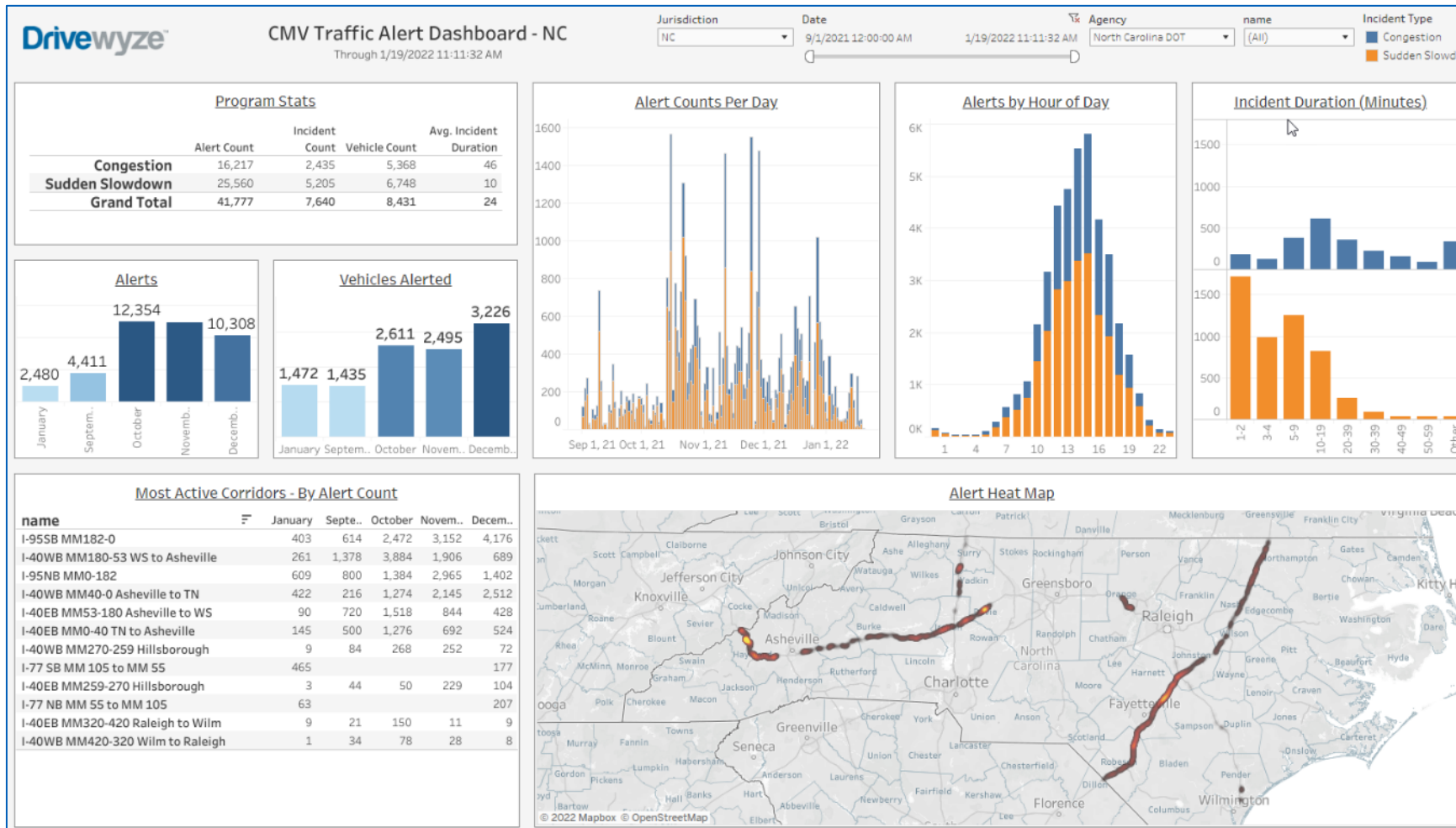
- Subscribed Fleets
- Subscribed Drivers

## Drivewyze Provides Analytics Results

- Alert Location
- Alert Frequency
- Alert Density



# CMV Alerts Reporting



- Interactive dashboard with historical alert and event trends
- Drill into time windows for specific event
- Near real-time event data
- Access to full raw event data



Program Stats

	Alert Count	Incident Count	Vehicle Count	Avg. Incident Duration
Congestion	22	3.00	19.00	69.64
Sudden Slowdown	18	14.00	12.00	5.22
Grand Total	40	17.00	24.00	40.65

Alerts

40

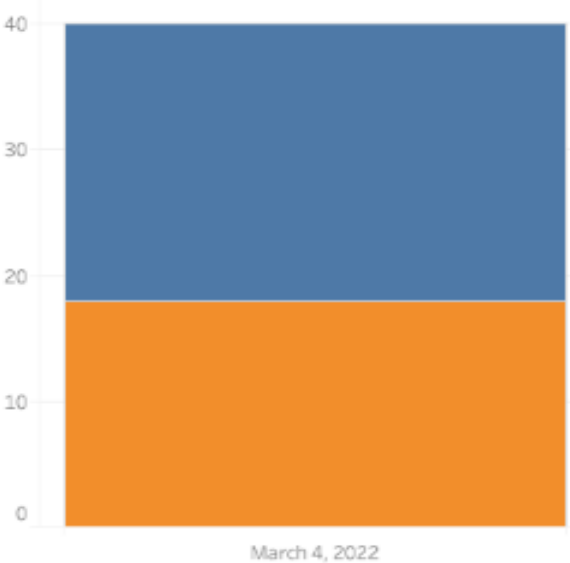
March

Vehicles Alerted

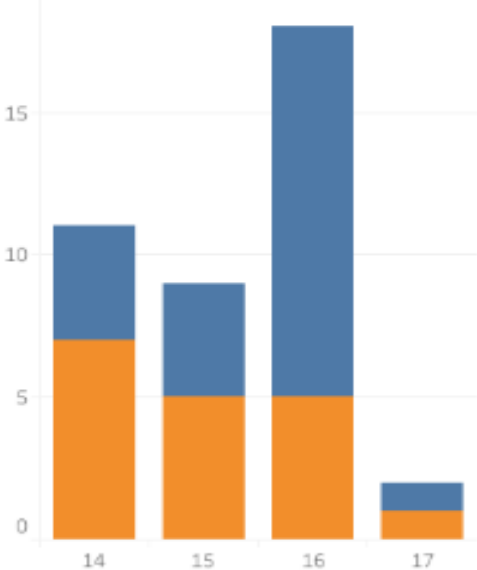
24

March

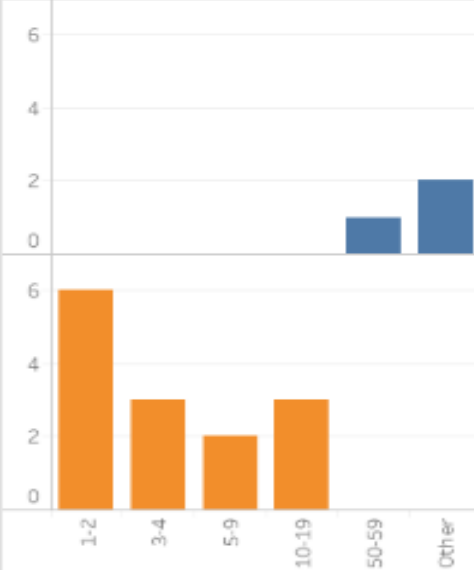
Alert Counts Per Day



Alerts by Hour of Day



Incident Duration (Minutes)

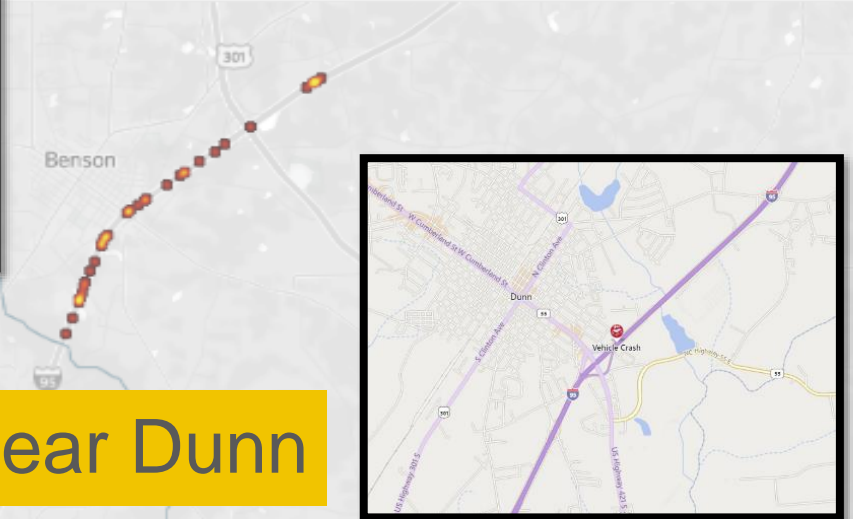


Most Active Corridors - By Alert Count

name	March
I-95SB MM182-0	39
I-95NB MM0-182	1



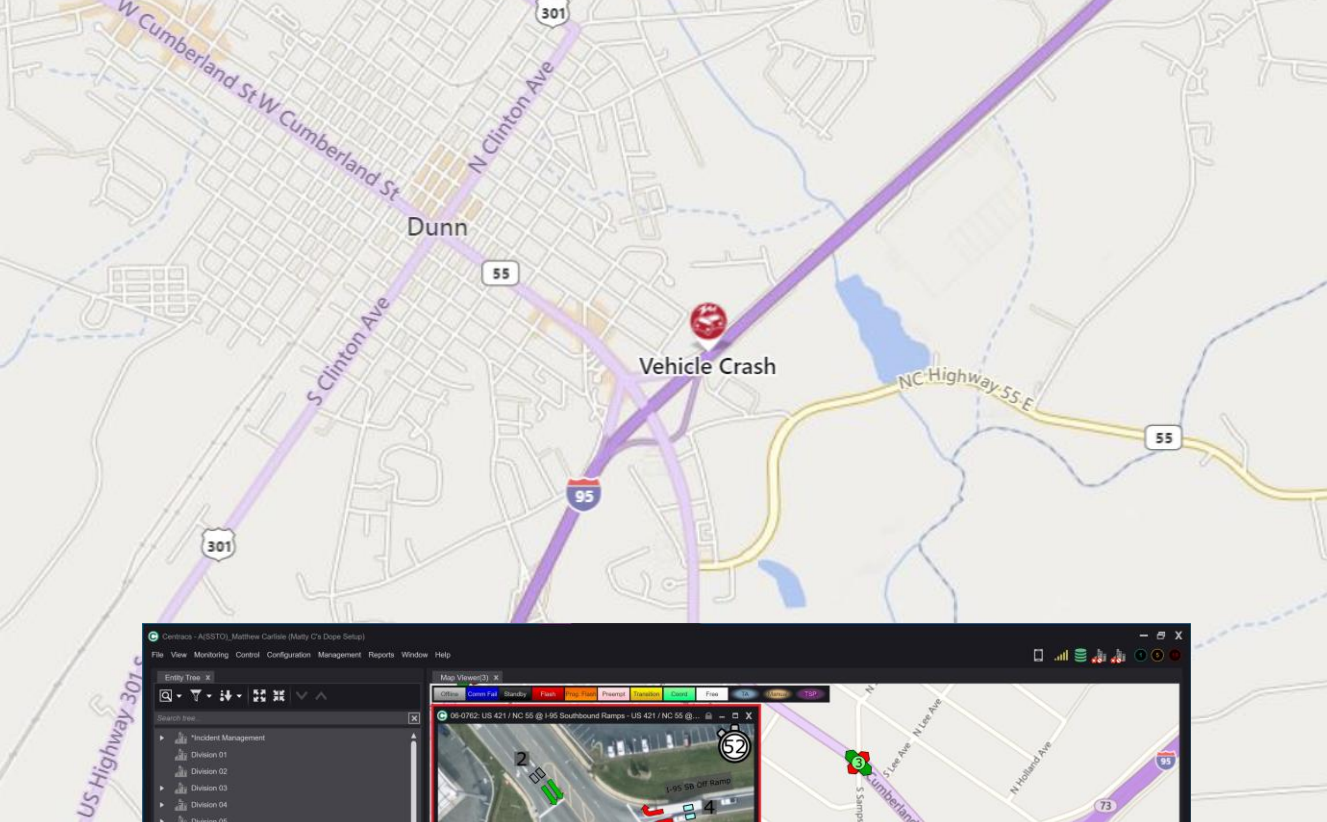
Alert Heat Map



Crash: I-95 South, near Dunn



# Crash: I-95 South, near Dunn, 3/4/22



Centra - AIS/STO, Matthew Carlisle (Marty C's Drop Setup)

File View Monitoring Control Configuration Management Reports Window Help

Entity Tree

- Incident Management
  - Division 01
  - Division 02
  - Division 03
  - Division 04
  - Division 05
  - Division 06
  - Division 07
  - Division 08
  - Division 09
  - Division 10
  - Division 11
  - Division 12
  - Division 13
  - Division 14
- External System - Server to Server - Fayetteville
- External System - Server to Server - Gastonia
- Reports

Current Users

User	Workstation	Login Date
D06 James Flowers	DIV06-309051	3/9/2022
Logged Off	TE-239974L	3/9/2022
AIS/STO, Matthew Carlisle	TE-331039L	3/9/2022
D10 Tony Tagliarini	DIV10-324943L	3/9/2022
STOC, Matt Couchon	DIV05-297592	3/9/2022
D05 Chris Stewart	DIV05-304444L	3/9/2022
D10 Brandon Love	DIV10-299579L	3/9/2022
MRTMC, Michael Tucker	DIV10-304350	1/1/0001
D12 Robert Mault	div12-302996	1/1/0001

Map View

06-0762: US 421 / NC 55 @ I-95 Southbound Ramps - US 421 / NC 55 @

Mode / Pattern

Phase	1	2	3	4	5	6	7	8	9	10	11	12
Actual	100	62	100	100	63							
Prog	25	25	25	25	25							
Off												
Call												
Pre Call												
Next												
Overlap	A	B	C	D	E	F	G	H	I	J	K	L
Time												
On												
Plan												

Unit control is in standby

Ring 1 Maximum Ring 2 Maximum

Counts

Signal TEC Salsbran 2070 LX 84W 841305

Signal 13-0401: US70/College St @ SR2384/Charlotte St

Manual Commands

Action	Targets	Start	End
Flash > 5 minutes (D1)			
Flash > 5 minutes (D1)			
Flash > 5 minutes (D1)			
Flash (TMSD Testing)			
Flash > 5 minutes (D1)			





We have issued 50,000 alerts to date....  
We saw it “work” warning of I-95 crash queues...

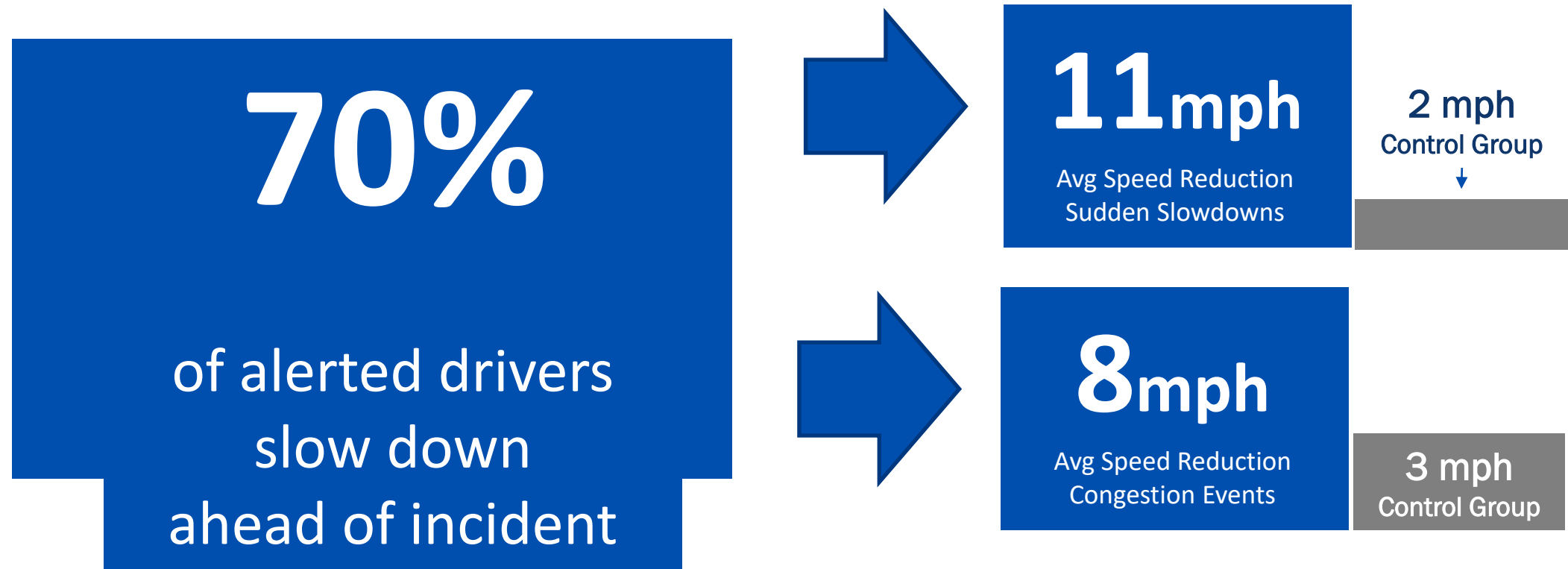
But what is Benefit/Cost ???





# CMV Safety Alert Effectiveness Study

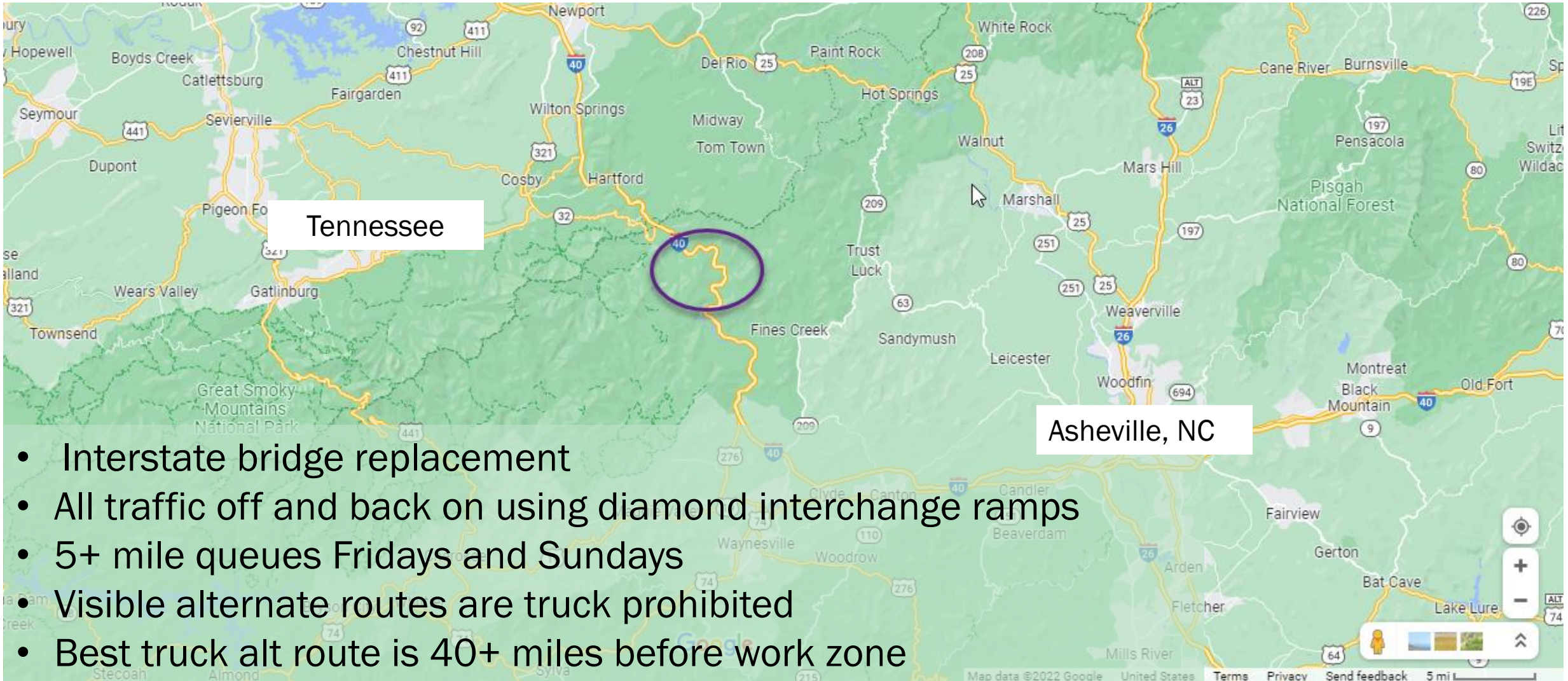
Preliminary results show that alerts do positively impact driving behavior relative to drivers not alerted.



Study conducted for I-95 Southbound Work Zone near Fayetteville, for January 14, 2022 – March 4, 2022 based on 4220 visits.



# I-40 Work Zone in Western NC



Tennessee

Asheville, NC

- Interstate bridge replacement
- All traffic off and back on using diamond interchange ramps
- 5+ mile queues Fridays and Sundays
- Visible alternate routes are truck prohibited
- Best truck alt route is 40+ miles before work zone



# “Agency Generated Safety Alerts”

## 1. I-26 West in NC

- Location = I-26 west @ Milemarker 49 (in NC)
- Preferred title message (25 characters) = I40 Delays before MM 7
- Preferred body message (25 characters) = Consider I26 to I81 to TN

## 2. I-40 West in NC

- Location = I-40 west @ Milemarker 40 (in NC)
- Preferred title message (25 characters) = Work Zone @ MM 7 Delays
- Preferred body message (25 characters) = Stay on I-40

## 3. I-40 East in TN

- Location = I-40 east Milemarker 400 (in TN)
- Preferred title message (25 characters) = Work Zone Delays in NC
- Preferred body message (25 characters) = Consider I81 to I26 to NC





# Drivewyze Safety Notification service to fleets (No cost to NCDOT)

## High Rollover

NC Cary i440 & i40 NB	35.766624 -78.733381
NC Charlotte I-85 & Harris Road SB	35.311518 -80.759468
NC Charlotte I-85 & I-77 EB	35.271867 -80.847583
NC Charlotte I-85 & I-77 NB	35.274336 -80.845508
NC Charlotte I-85 & I-77 SB	35.271875 -80.845903
NC Clyde 74 - i40 NB	35.543802 -82.915932
NC Fines Creek I-40 near Forest Service Rd 288 NB	35.739593 -83.026598

## Steep Grade

NC Green River Gorge I-26 Steep Grade EB	35.273732 -82.372902
NC TN Border I-26 Steep Grade NB	35.967915 -82.553483
NC TN Border I-26 Steep Grade SB	35.924458 -82.556657

## Low Grade

NC Durham 9th St EB	36.006555 -78.921865
NC Durham 9th St SB	36.006003 -78.922292
NC Durham S Alston Ave NB	35.984416 -78.889417
NC Durham S Alston Ave SB	35.983896 -78.889971
NC Durham S Roxboro St NB	35.99283 -78.89916
NC Durham W Peabody St NB	35.999116 -78.910281
NC Durham W Peabody St SB	35.998844 -78.910665
NC Greensboro E Lindsay St EB	36.075942 -79.785046
NC Greensboro E Lindsay St WB	36.076329 -79.785885
NC Greensboro E Washington @ Lyndon St WB	36.070459 -79.785634
NC Greensboro E Washington St EB	36.070093 -79.784234
NC Greensboro S Aycock St NB	36.063084 -79.815501

### -Data sets

High Rollovers – from NCDOT – 2018ish

Steep Grade – publicly available (signage)

Low Bridges – licensed data set from partner

-NCDOT validating these against truck crash data

-Considering asking DW to reinforce truck prohibitions, esp. on mountain roads







# Commercial Vehicle Safety Alerts in North Carolina

TETC Trav Info

Kelly Wells, PE, NCDOT



Drivewyze INRIX



# Using Technology to Enhance Commercial Vehicle Safety on New Jersey Roads



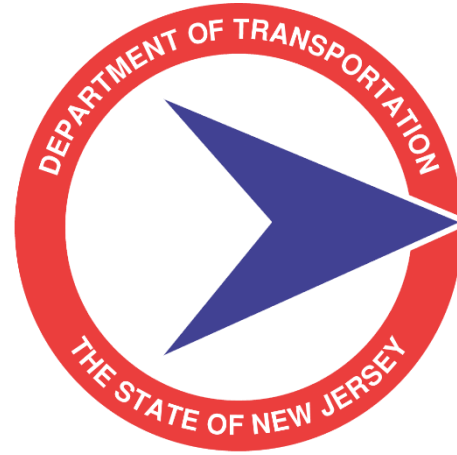
**Sal Cowan**, Senior Director - Transportation Mobility  
*New Jersey DOT*



**Amy Lopez**, Director, Sales and Business Development Public Sector Eastern Region,  
*INRIX*

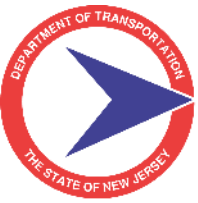


**Marc Nichols**, Director, Government & Industry Partnerships  
*Drivewyze*



# **New Jersey Commercial Vehicle Alerts**





# Who Are We Working With?



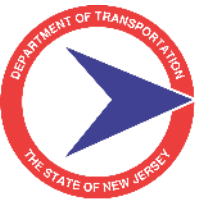
Provider of North America's largest weigh station bypass system (Drivewyze PreClear)



Provider of real time traffic data and analytics to state agencies, cities and transportation authorities worldwide







## Which Agencies Are Involved?





## What Roads Are Covered?

Northern New Jersey Commercial Vehicle Alert Sections			
Route	Begin Milepost	End Milepost	Total Miles
I-78	0	58.5	58.5
I-80	0	68.5	68.5
I-280	0	17.85	17.85
I-287	0	67.54	67.54
NJ 440	0	5.15	5.15
Total			217.54

Southern New Jersey Commercial Vehicle Alert Sections			
Route	Begin Milepost	End Milepost	Total Miles
I-195	0	34.2	34.2
I-295	0	76.56	76.56
I-76	0	3.08	3.08
I-676	0	4.75	4.75
NJ 42	6.2	14.3	8.1
Total			126.69

New Jersey Turnpike			
Route	Begin Milepost	End Milepost	Total Miles
PHMTE			6.6
NBHCE			8.4
Mainline			118
Western Spur			10.5
I-95 Extension			5
Total			148.5

Garden State Parkway			
Route	Begin Milepost	End Milepost	Total Miles
	0	106	106
Total			106

Atlantic City Expressway			
Route	Begin Milepost	End Milepost	Total Miles
	0		48
Total			48

Total Centerline Miles  
(all three agencies)

647




## What Are We Doing?



- Provide commercial drivers with real-time slowdown and congestion alerts.
- Help commercial drivers react before encountering stopped traffic or slowdowns


## How Is It Done?

### Road Closures




<b>Hazard/Crash - Moderate Impact</b>	
<b>ID</b>	160415533
<b>Description</b>	Left lane blocked due to crash on Garden State Pkwy Southbound at I-195.
<b>Where</b>	Southbound Garden State Pkwy at undefined I-195
<b>Status</b>	active
<b>When</b>	02/22/2022 7:02 am - 02/22/2022 10:16 am
<b>API RESPONSE</b>	

### Congestion/Queues



<b>Description</b>	Severe delays of ten minutes and delays increasing on I-90 Westbound in West Brimfield. Average speed 15 mph.
<b>Where</b>	Westbound I-90 between I-90 Exit 9 / I-84 and I-90
<b>Status</b>	active
<b>When</b>	2020-06-01 2:06 pm - 2020-06-01 5:08 pm
<b>Length</b>	3.70 Miles
<b>Delay from Normal</b>	10.00 minutes

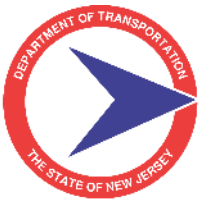
### Sudden Slowdowns



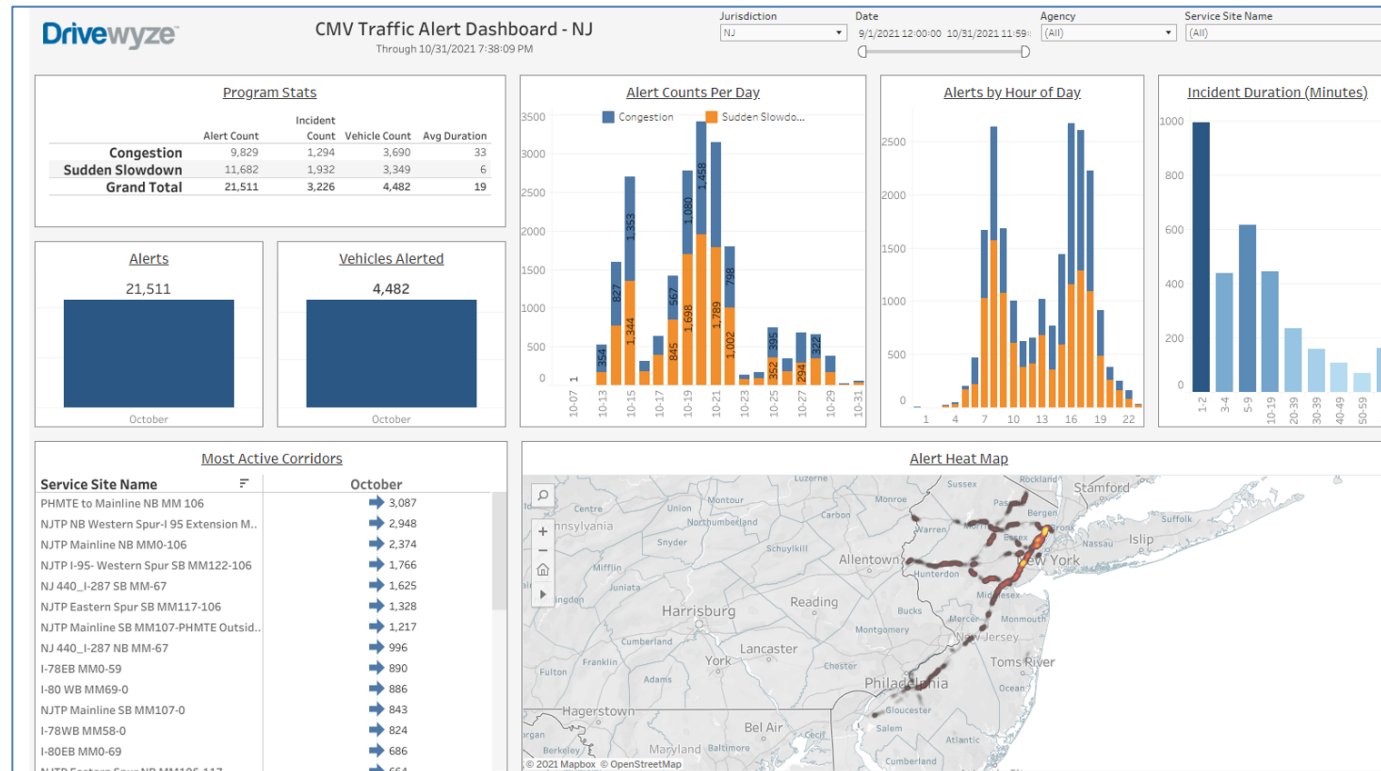
<b>Dangerous Slowdown</b>	
<b>ID</b>	11120561 1282829538
<b>Where</b>	GARDEN STATE PKWY
<b>Severity</b>	Moderate Impact
<b>Delta</b>	41 mph
<b>Speed At</b>	17 mph
<b>Start</b>	02/22/2022 9:41 am
<b>API RESPONSE</b>	

- INRIX Traffic Intelligence -- Real-time monitoring of nationwide road network
- Detects and characterizes closures, queues, and slowdowns
- Updates every 60-seconds - includes location and severity



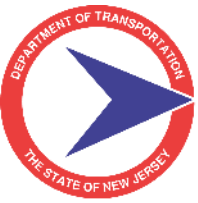


## What Are We Getting?

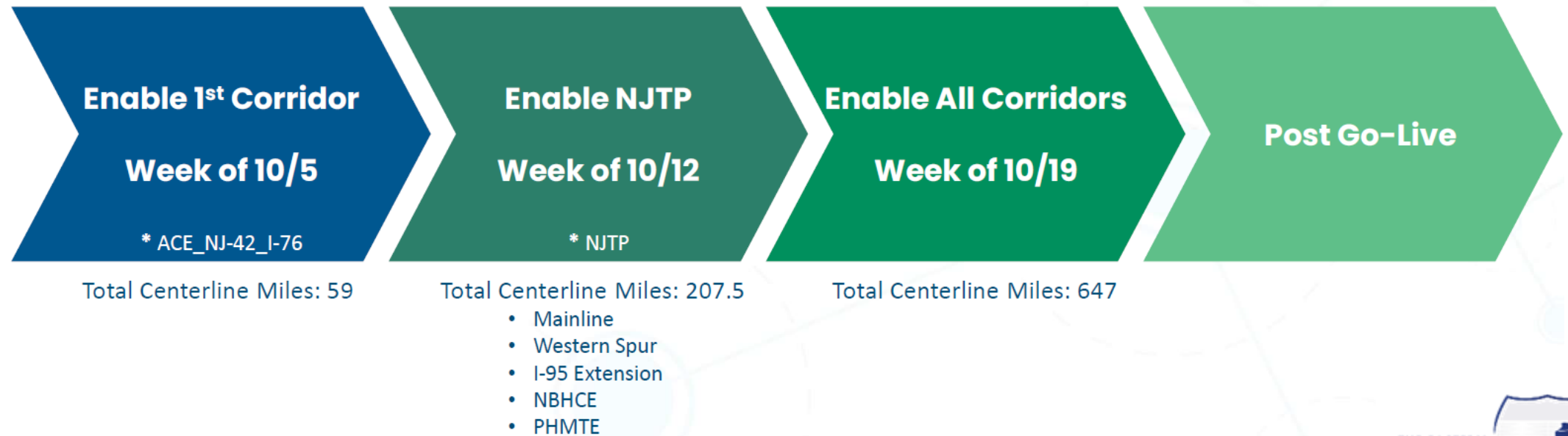


Web-based dashboard showing # of alerts and vehicles alerted in NJ





## Deployment Timeline



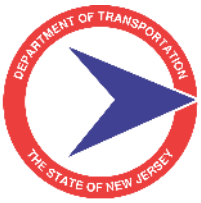
## Short-Term Next Steps

- Provide app to agency field staff for use and evaluation
- Analyze alerts compared to TMC data

## Long-Term Next Steps

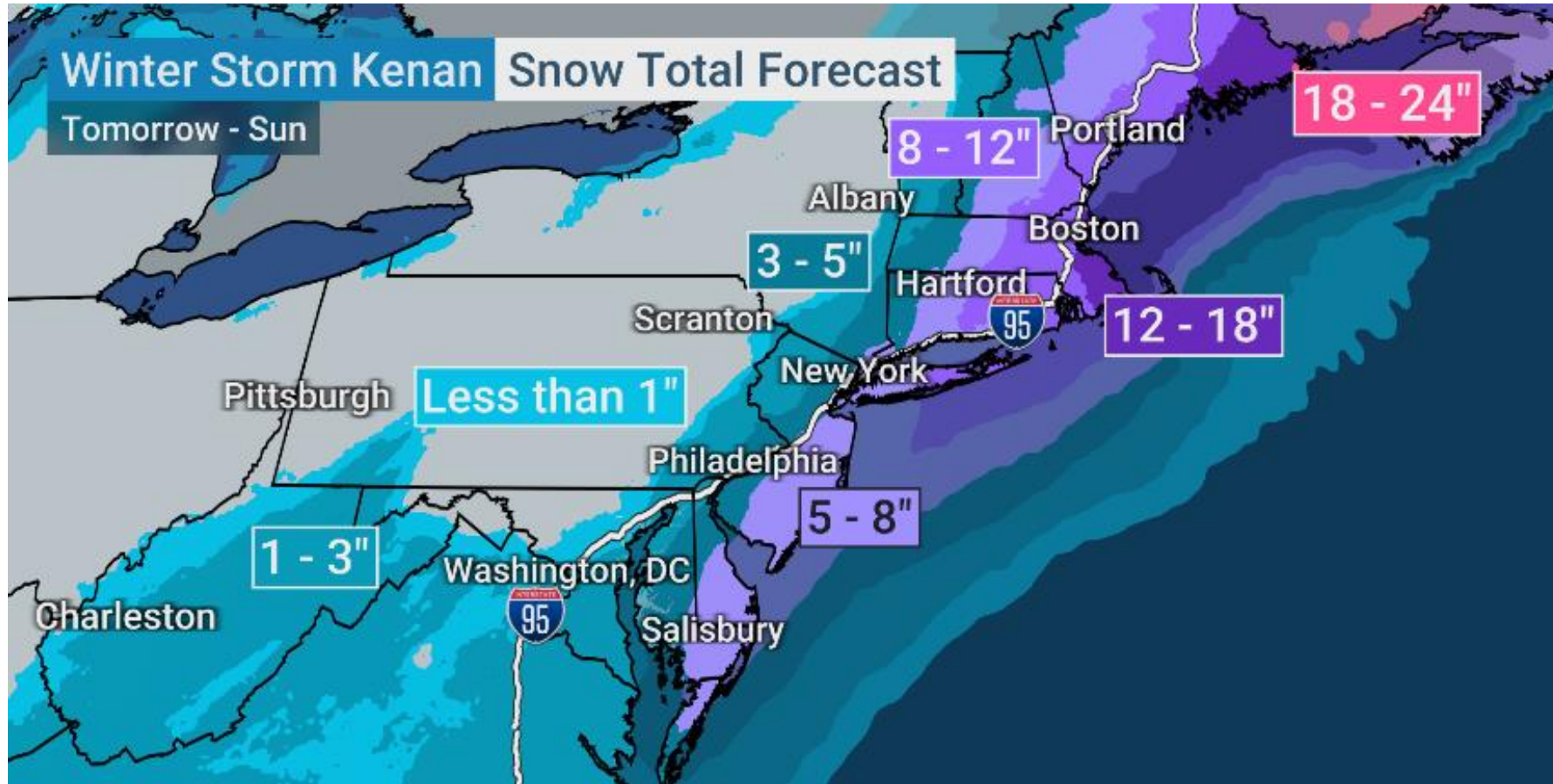
- Reviewing over 300,000 datapoints from SLD and TAMS
- Determine static signage (rollover, low bridge, etc.) to send in-cab



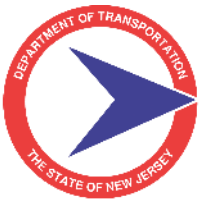


## Use Case – Response to Nor'easter Drivewyze Commercial Vehicle Alerts

# Winter Storm Kenan







# Request from NJDOT to Alert the Northeast Drivewyze Commercial Vehicle Alerts

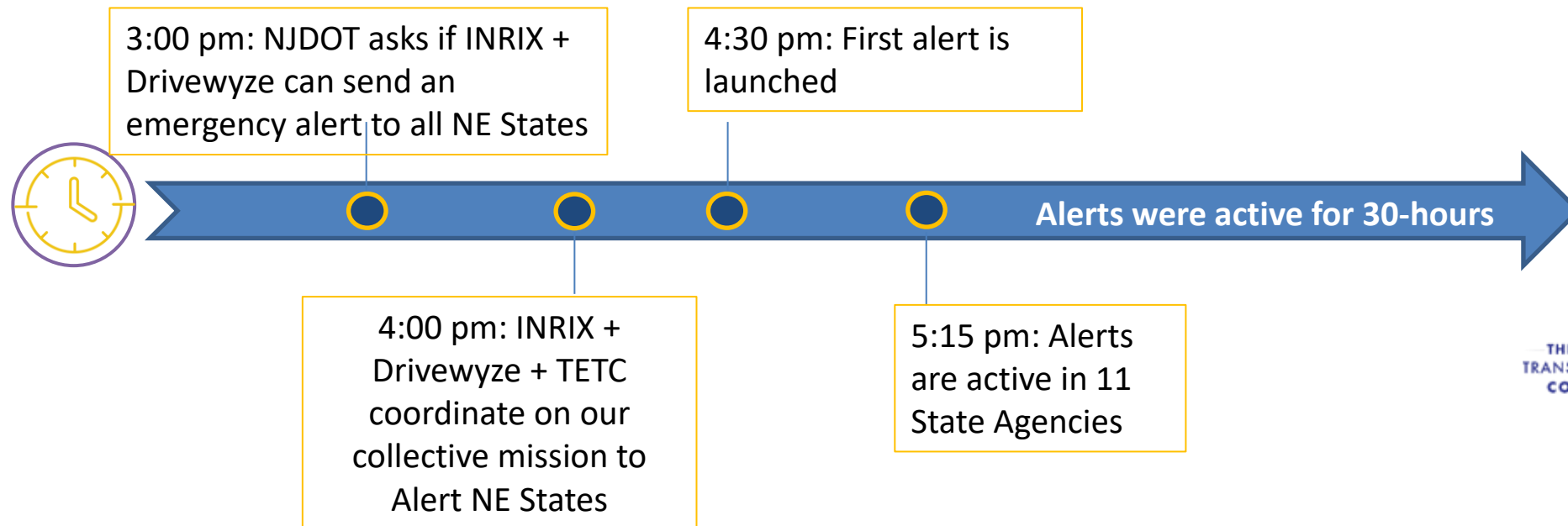
Q - Can INRIX + Drivewyze provide alerts for Truck Restrictions due to the upcoming storm?

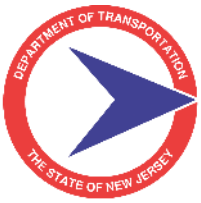
A - Yes!

Q – Can you alert the entire Northeast (even though only NJDOT has the service)??

A – Yes – we did!!!....we did because of the NJ request and the concern for the NE states...

It didn't take long to get things moving!





# “Major Winter Storm Alert” Drivewyze Commercial Vehicle Alerts



- 11 states activated 2 ¼ hours after initial request
- 10 states that do NOT subscribe CMV Alerts

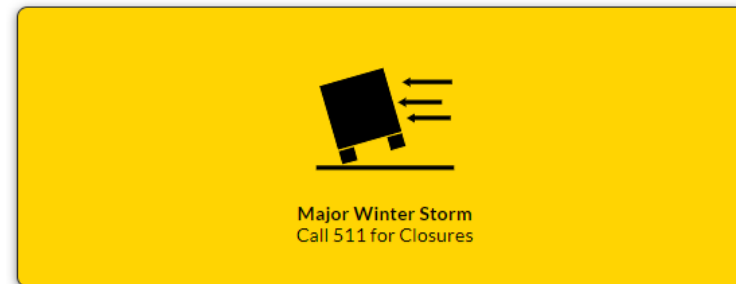
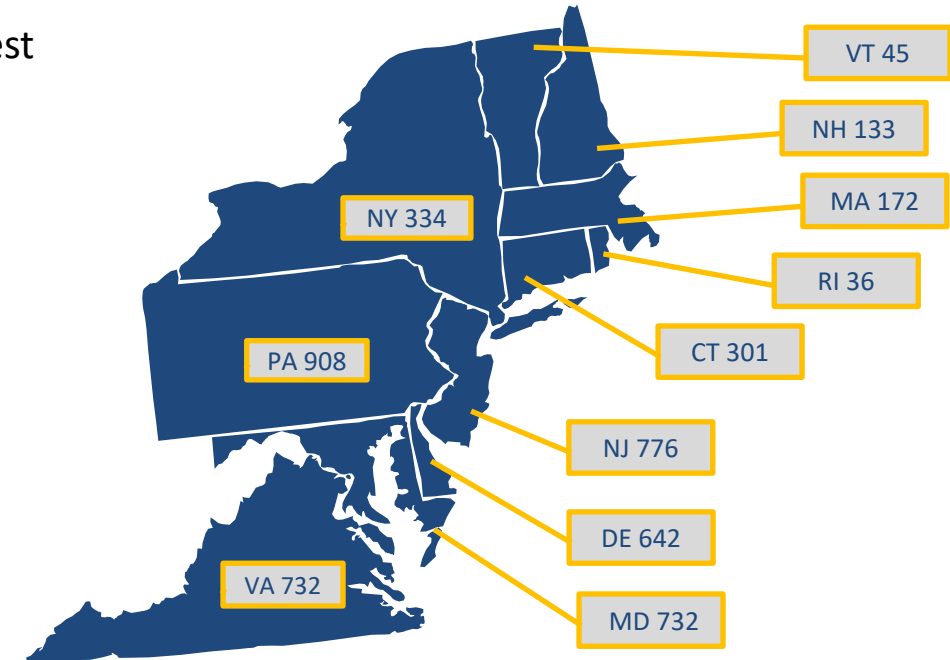


- 11 State agencies
- 1956 NB interstate road miles



- 4,811 Trucks alerted over 30-hours

State	Location of Alert	Number of Trucks
CT	North I-95 NB	301
DE	North I-95 NB	642
MD	North I-495 NB	732
MA	North I-91 NB	165
MA	North I-495 NB	7
NH	North I-95 NB	133
NJ	North I-95 NB	260
NJ	North I-295 NB	516
NY	North I-87 NB	25
NY	North I-495 NB	4
NY	North I-95 NB	305
PA	I-80 East EB	908
RI	North I-95 NB	36
VT	North I-91 NB	45
VA	North I-95 NB	732
Total Number of Trucks Alerted		4811



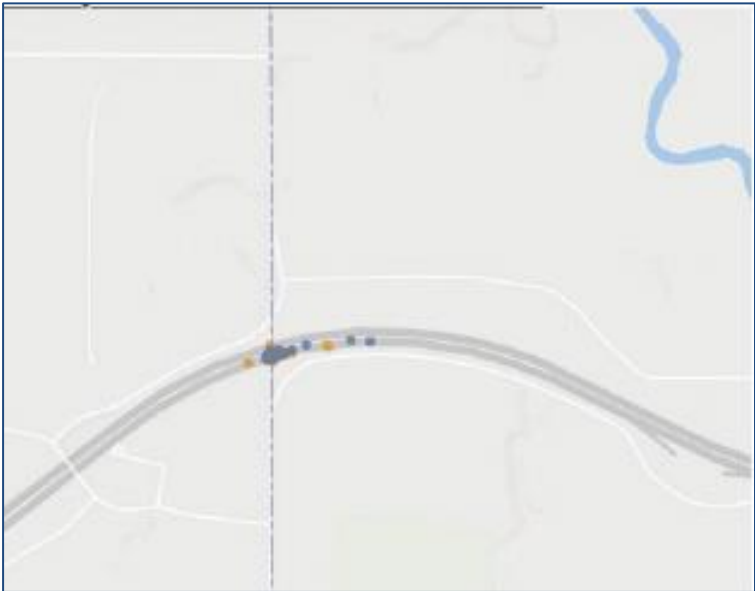
This is the actual alert shown on the in-cab ELD and on the Drivewyze App on any smart device.





# Geo-Fence Alert Example

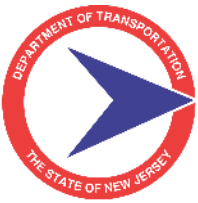
PA Major Snowstorm Alert North I-80 East EB



- 90 Alerts Sent Out
- Date and Time Site was Activated: 01/28/22 at 5:47 PM EST
- Date and Time Site was Deactivated: 01/30/22 at 9:59 AM EST

State	Location of Alert	Number of Trucks
CT	North I-95 NB	301
DE	North I-95 NB	642
MD	North I-495 NB	732
MA	North I-91 NB	165
MA	North I-495 NB	7
NH	North I-95 NB	133
NJ	North I-95 NB	260
NJ	North I-295 NB	516
NY	North I-87 NB	25
NY	North I-495 NB	4
NY	North I-95 NB	305
PA	I-80 East EB	908
RI	North I-95 NB	36
VT	North I-91 NB	45
VA	North I-95 NB	732
Total Number of Trucks Alerted		4811





Thank you!  
Questions?



Drivewyze<sup>®</sup>

**INRIX**



Sal Cowan  
[Sal.Cowan@dot.nj.gov](mailto:Sal.Cowan@dot.nj.gov)



Marc Nichols  
[mnichols@drivewyze.com](mailto:mnichols@drivewyze.com)



Amy Lopez  
[amy.lopez@inrix.com](mailto:amy.lopez@inrix.com)







# Wrap Up

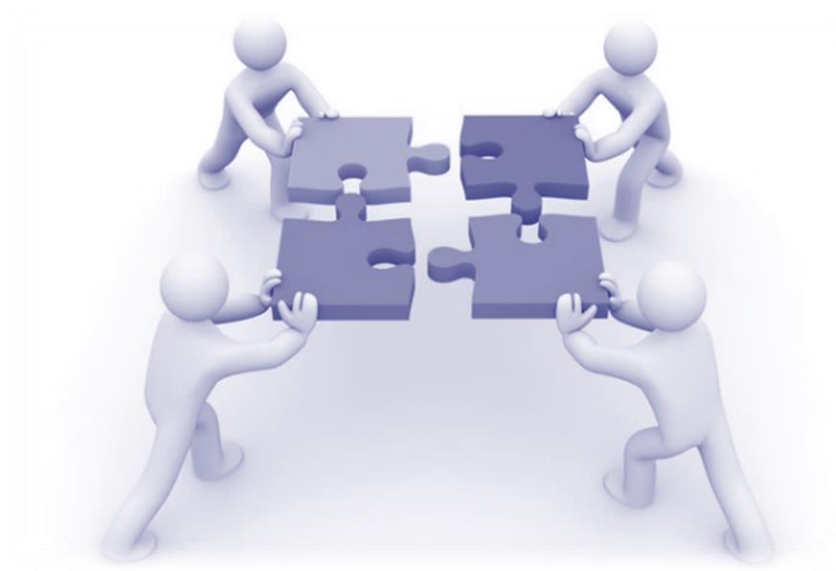


**Kelly Wells, PE, State Traveler Info Engineer**

*North Carolina DOT*



# Additional Questions



Meeting information & presentations will be posted to The Eastern Transportation Coalition website.  
Participants will receive a link to the presentations after they are posted.



# THANK YOU!

*For Questions or Additional Information, please contact:*

**Denise Markow, TSMO Director**, 301-789-9088, [dmarkow@tetcoalition.org](mailto:dmarkow@tetcoalition.org)