



The Coalition Freight Program focuses on the movement of freight across multiple jurisdictions and across all modes, including highway, rail, and water. Through its Freight Program Committee, the Coalition is actively helping states advance seamless and resilient goods movement to, through and within the Eastern states.



FREIGHT PLANNING

The Coalition Freight Program supports states in their freight planning efforts, through sharing best practices in statewide freight plan development and implementation. The Committee provides a forum through periodic exchanges via webinars and meetings for agencies to discuss state freight plan development, including innovative approaches to identify freight projects to be incorporated into state plans.

The TETC Freight Program is providing each member agency with state specific Freight Analysis Framework (FAF) disaggregated data to support them, as applicable, in their freight planning, including updating of state freight plans.

TRUCK PARKING

Addressing the challenges of truck parking availability nationally and within the Corridor remains an important focus area for the Coalition and its member agencies. In support of this, the Freight Program maintains a Truck Parking working group comprised of Coalition agency members representing agency departments of planning, operations and maintenance working on various activities related to truck parking. The Coalition convenes working group members to examine issues and challenges related to truck parking and identify and share new ideas and successful strategies that agencies within the corridor and nationally have implemented to address truck parking demand.



FREIGHT

FREIGHT CONTACT:
Marygrace Parker
Director, Freight Program
mgparker@tetcoalition.org
518.852.4083

FREIGHT DATA

The use of freight data is invaluable to understand goods movement trends and freight needs, and thus is an emphasis area for Coalition Freight Committee members including:

- Educational guidance documents that to “demystify” freight data by providing background on the theoretical context supported by practical recommendations for public agency transportation planners/practitioners;
- “Freight Data Matrix Metadata Document” to familiarizes practitioners with the various attributes within freight data sources for understanding and comparison for potential uses in planning; and
- A TETC Freight Data Working Group to provide a forum for agencies to share their use of innovative sources for and applications of freight data.

FREIGHT RESILIENCY

Supporting goods movement that is resilient to adverse weather events, sustained infrastructure closures and travel time delays that impact transportation systems is critical to the mitigation of supply chain disruptions. In collaboration with the TETC TSMO program, the Freight Program works with agencies to share strategies to improve timely and accurate travel information to trucks to mitigate impacts to their trips, whether in day to day travel or when developing transportation management plans. The Coalition’s Commercial Vehicle Portal on the TETC website serves as a gateway to travel information and restrictions specific to the trucking industry from Coalition agencies and other trucking related stakeholders and organizations.

TRAINING

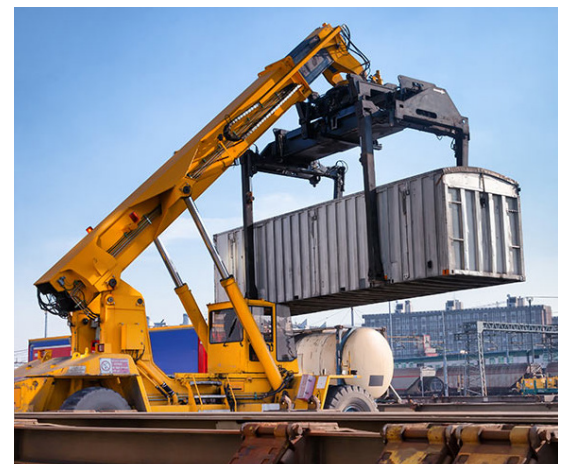
The TETC Freight Committee recognizes enhancing the freight network in the Coalition region and nationally, requires public sector transportation staff to understand goods movement as a time sensitive and integrated system, across all modes. The Coalition’s Freight Academy, a unique immersion program, brings together public sector transportation staff in both planning and operations roles to enhance their knowledge of freight terminology, supply chain practices, emerging issues, and needs. By exposing them to the private sector’s workings and decision-making processes in managing supply chain decisions, the Freight Academy provides a foundation of knowledge for agency staff to make recommendations and/or decisions in transportation planning, operations, investments, and policies.

“ ”

Being part of a coalition, such as the trucking parking working group is always valuable as a state DOT. Freight knows no boundaries and being able to partner with other state DOTs to solve truck parking challenges is critical to freight movement and flow.

Ideas generated and thinking out of the box creates multiple solutions to a complex and critical issue.

Dan Pallme Tennessee DOT



For more information on the coalition, visit www.tetcoalition.org