

REDUCE SECONDARY CRASHES **ACT FAST, CLEAR QUICKLY!**

THE EASTERN
TRANSPORTATION
COALITION

CONNECTING FOR SOLUTIONS

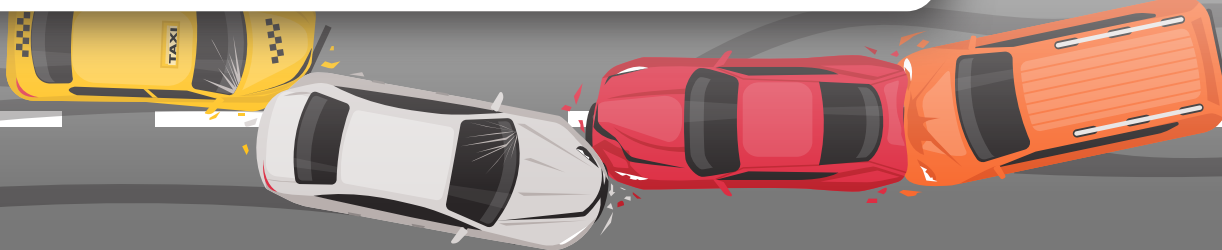


WHAT IS A **SECONDARY CRASH?**

A crash that occurs within the queue (in the same or opposing direction) of a primary traffic incident.

A secondary crash is often **more significant than the primary event**, which could be something as simple as debris in the roadway or a disabled vehicle.

UP TO
1 IN 13
CRASHES ARE
SECONDARY
CRASHES



THE ODDS OF A SECONDARY CRASH INCREASE WITH EVERY MINUTE A PRIMARY INCIDENT REMAINS ON THE ROAD.



0-10 min
+13-21%
per minute



11-30 min
+3%
per minute



31-60 min
+1.5%
per minute

WHAT CAN YOU DO?

- ➔ **Act quickly!** First 10 minutes matters most:
 - Rapid dispatch/response
 - Use cones, flares, and blocking vehicles to designate a safe work zone and protect motorists and responders
- ➔ Clear lanes quickly
- ➔ Protect the back of the queue
- ➔ Warn drivers approaching the queue
- ➔ Communicate and coordinate



WHAT INCREASES THE ODDS OF A SECONDARY CRASH?

Heavy traffic volume: **5-6x higher** 🚗

Snow: **5.5x higher** ❄️

Rain: **2-2.5x higher** 💧

Lane/shoulder blockage: **2x higher** 🚧



**SAFE, QUICK CLEARANCE
SAVES LIVES!**